



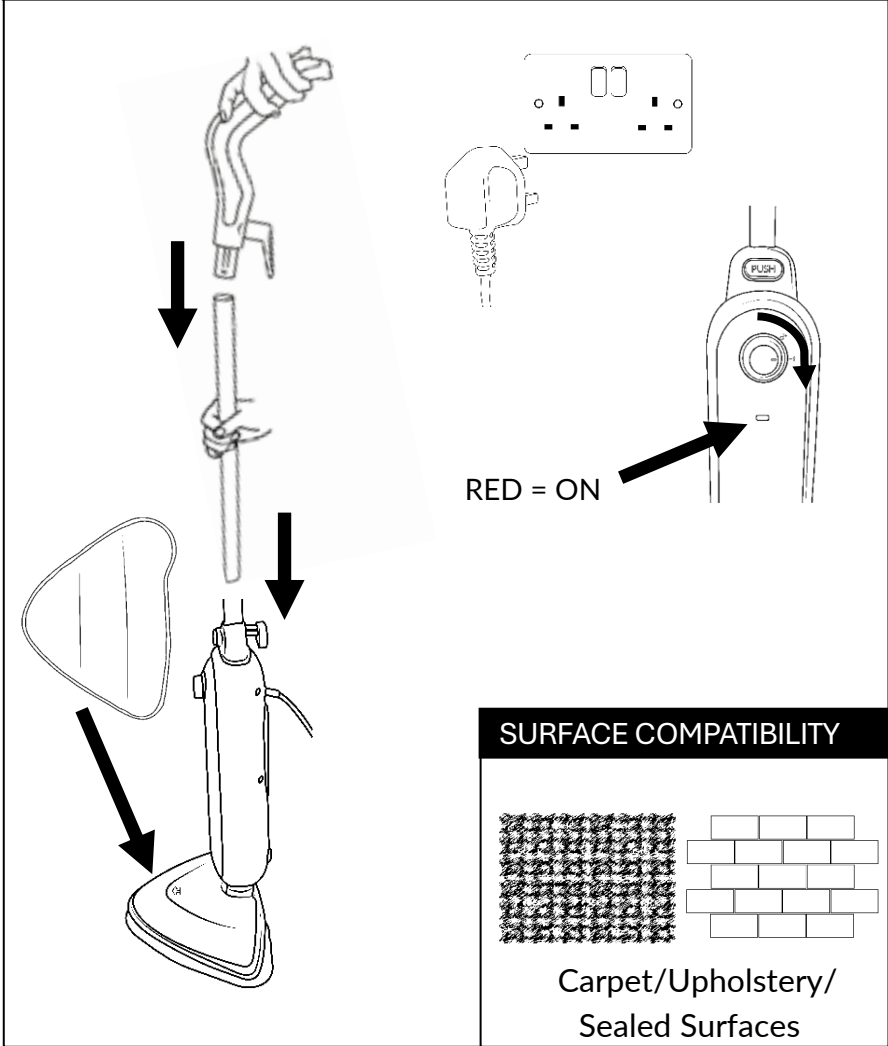
Russell Hobbs

Operating Manual

STEAM & CLEAN

RHSM1001-G (BP-G)

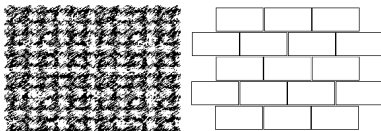
ASSEMBLY & POWERING ON



The diagram illustrates the assembly and powering on process in three stages:

- Stage 1:** A hand is shown holding the handle and the main body, with a downward arrow indicating they are to be joined.
- Stage 2:** The handle is attached to the main body. A separate cord is shown being plugged into a wall outlet. An arrow points to a small red indicator light on the handle, with the text "RED = ON".
- Stage 3:** The main body is shown being attached to the base. A downward arrow indicates the assembly direction. A separate arrow points to the base, which has a "ON" label.

SURFACE COMPATIBILITY



The compatibility section shows two icons: a textured carpet icon and a brick-patterned sealed surface icon.

Carpet/Upholstery/
Sealed Surfaces

GUARANTEE

At Russell Hobbs, we take all our customer feedback seriously.

Feel free to contact our Customer Services Team who will be more than happy to assist you.

This product is guaranteed for 12 months from the date of the original purchase. If any defect arises due to faulty materials or workmanship, the faulty product must be returned to the place of purchase.

Refund or replacement is at the discretion of the retailer.

The following conditions apply:

- The product must be returned to the retailer with the original proof of purchase.
- The product must be installed and used in accordance with the instructions contained in this instruction guide and any other instructions for use which are supplied.
- It must be used for domestic purposes only and for its intended use.
- This guarantee does not cover wear and tear, damage, misuse or consumable parts.
- This does not affect your statutory rights.

Region	Contact	Website
UK & Northern Ireland	0345 209 7461	mda.russellhobbs.com
Ireland	1 800 938982	ie.mda.russellhobbs.com
Rest of Europe	europe@productcaregroup.com	de.mda.russellhobbs.com fr.mda.russellhobbs.com es.mda.russellhobbs.com it.mda.russellhobbs.com nl.mda.russellhobbs.com

Note your serial number below for future reference



Image for illustration purposes only

IMPORTANT SAFETY INSTRUCTIONS

- It is hazardous for anyone other than a competent person to carry out any service or repair operation that involves the removal of a cover which gives protection against exposure to electrical parts.
- Do not remove parts from the appliance such as screws.
- If the supply cord is damaged, it must be replaced by the manufacturer, its service agent or similarly qualified persons in order to avoid a hazard. Do not use with damaged cord or plug.
- This product is intended for household use only. Do not use outdoors.
- This appliance can be used by children aged from 8 years and above and persons with reduced physical, sensory or mental capabilities or lack of experience and knowledge if they have been given supervision or instruction concerning use of the appliance in a safe way and understand the hazards involved. Children should not play with the appliance. Cleaning and user maintenance should not be made by children without supervision.
- Do not direct at people, animals, electrical outlets, or equipment containing electrical components.
- The use of accessory attachments, detergents or cleaning solutions not recommended by the appliance manufacturer may cause fire, electric shock, injury or damage. Use only those as recommended by the manufacturer.
- Descale the product monthly using 50% white vinegar & 50% water solution.

IMPORTANT SAFETY INSTRUCTIONS

- Do not use in enclosed spaces filled with vapour, such as paint thinner, moth proofing substances, or any flammable or combustible vapours.
- Do not use on leather, wax polished floors, natural wood and/or unsealed floors, and any fabric not recommended for steam treating. If in doubt, consult the flooring manufacturer and test an inconspicuous area.
- Do not store with a wet pad attached.
- Do not immerse in water, such as for cleaning.
- Clean pads at least monthly.
- Distilled or demineralized water will maximise the performance of the mop.
- Quality testing during manufacture may result in water droplets remaining in the tank. This is normal.
- If you shake this product the water cut-off valve will make a rattling noise. This is normal and is not a defect.

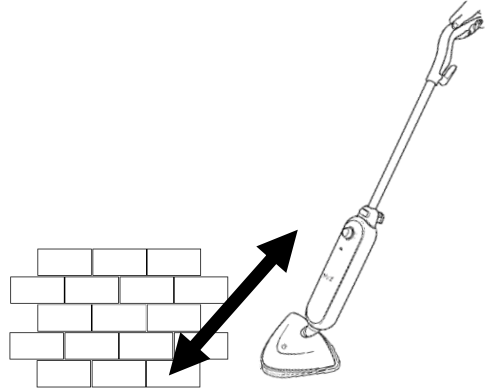
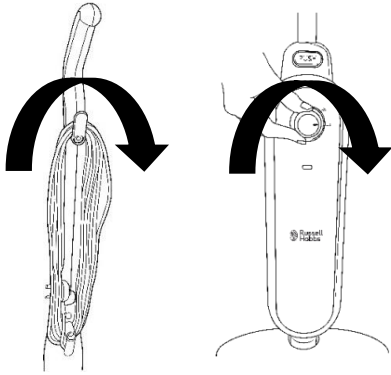
Important: Please ensure the power cable is wrapped loosely on the cable holders. Wrapping the power cord too tightly can cause damage.

WARNING- THIS APPLIANCE MUST BE EARTHED

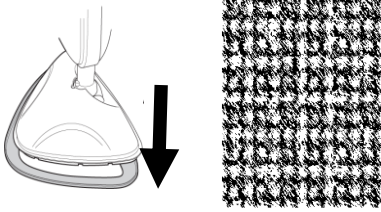
This appliance is designed to operate from a mains supply of 220-240V~ 50/60Hz. Check that the voltage marked on the product corresponds with your supply voltage.

This product is fitted with a 7A fuse complying with BS1363. If this plug is unsuitable, damaged or needs to be replaced, contact customer services.

OPERATION



USING ON CARPET

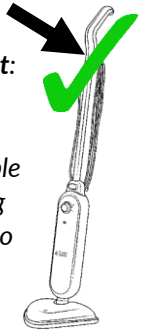


Always use supplied carpet glider on carpets

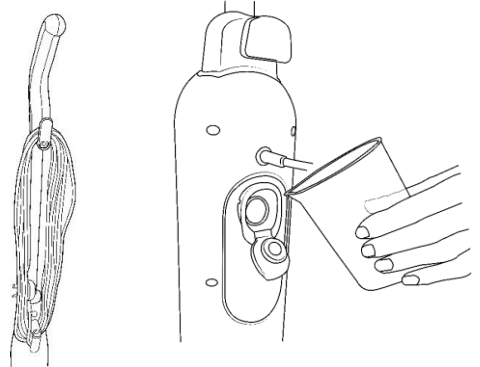
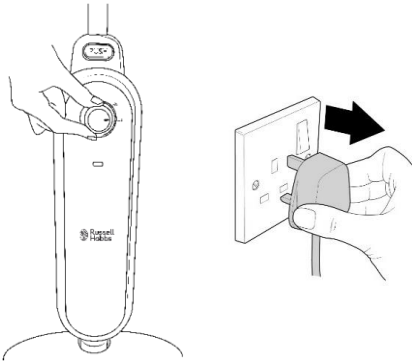
CARRYING THE APPLIANCE



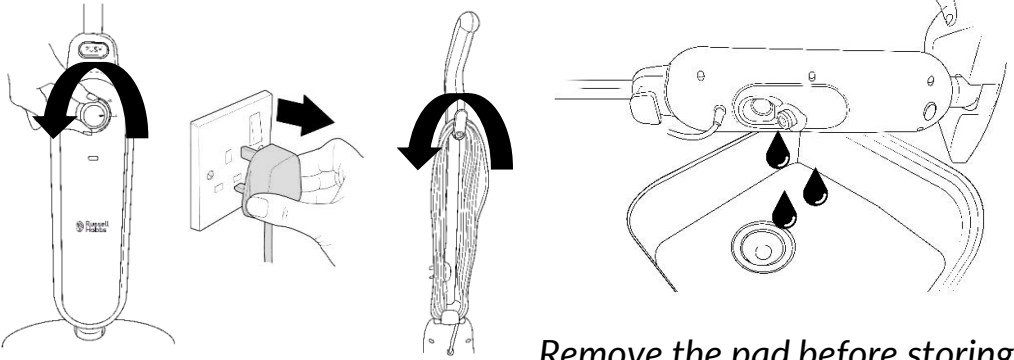
*Ensure cord is stowed. **Important:** Ensure the power cable is wrapped loosely on the cable holders. Wrapping the power cord too tightly can cause damage.



FILLING THE TANK



STORING THE APPLIANCE



Remove the pad before storing

PROBLEM SOLVING

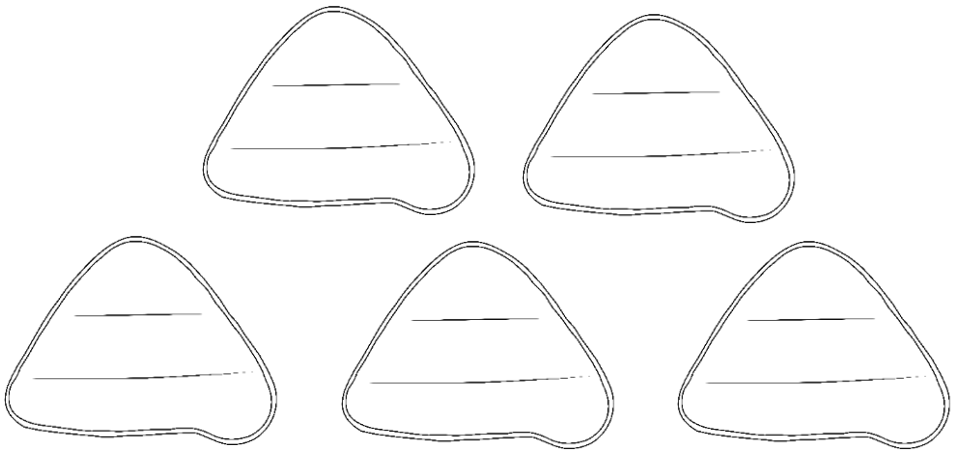
Reduced steam/no steam is coming out	<ul style="list-style-type: none"> • Check the water tank is filled • Check the steam dial is turned on at the front • Check the appliance is plugged in correctly
The appliance smells	<ul style="list-style-type: none"> • Check the microfiber pad is clean • Wash the microfiber pad in a washing machine or warm soapy water and allow to dry naturally • If first time use, new parts heating may cause a smell but this will dissipate quickly
A puddle has formed/the floor is soaking wet	<ul style="list-style-type: none"> • The mop pad is saturated • Wash the mop pad allow to dry naturally, or replace with a new pad • If still too much water, contact customer services
Parts have broken	<ul style="list-style-type: none"> • Contact customer services
The mop pads aren't cleaning in the washing machine	<ul style="list-style-type: none"> • Pads need replacing • Visit your local retailer, or contact customer services to purchase additional pads
The vacuum cleaner has cut out	<ul style="list-style-type: none"> • Allow the vacuum to cool for 1 hour. Clean all filters and dust containers before trying to use again.

REPLACEMENT PADS

Only use official Russell Hobbs microfibre mop pads with this appliance.

Replacement pads can be purchased direct from Russell Hobbs and selected retailers.

Replacement pad code: RHPAD1001-G



WARNING

Symbol IEC 60417-5597 (2002-10) is used on the unit to indicate that this unit operates with hot water vapour (steam). To avoid scalding and burns take extra care when in use



ENERGY CONSUMPTION

Product information for power consumption and maximum time to reach applicable low power mode

Off mode	Power Consumption (Off Mode)	0.0W
	Setting and the maximum time need to reach the applicable low power condition	At once after the switch was turned off
Standby mode	Power Consumption (Standby)	Not applicable
	Setting and the maximum time needed to reach the applicable low power condition	The appliance does not incorporate a standby mode



Russell Hobbs

Made by Product Care Trading Limited under license from Spectrum Brands (UK) Limited. Product Care Trading Ltd, Unit 1, Green Bank Business Park, Swan Lane, Hindley Green, Wigan, WN2 4AY, United Kingdom / Product Care (Ireland) Ltd, Unit 3D North Point House, North Point Business Park, New Mallow Road, Cork, T23 AT2P, Ireland. Russell Hobbs is the registered trademark of Spectrum Brands (UK) Ltd.

UK
CA



The 'wheellie bin' symbol is known as the 'Crossed-out wheellie bin Symbol'. When this symbol is marked on a product/batteries, it means that the product/batteries should not be disposed of with your general household waste. Only discard electrical/electronic/battery items in separate collection schemes, which cater for the recovery and recycling of materials contained within. Your co-operation is vital to ensure the success of these schemes and for the protection of the environment. For your nearest disposal facility, visit www.recycle-more.co.uk or ask in store for details.

SEDEX – Connecting businesses and their global suppliers to share ethical data and enabling improvement in ethical performance. Visit www.sedex.org.uk for further information.

We reserve the right, due to possible changes to design, to alter the instruction manual without prior notice.

Revision 7.2