

SKU: 16987

# STAR WARS™

**THIS IS NOT A TOY  
THIS LIGHT IS NOT TO BE USED BY A CHILD  
THIS LIGHT IS NOT TO BE USED AS A NIGHT LIGHT  
FOR INDOOR USE ONLY  
FOR DRY LOCATIONS ONLY**



**LUKE SKYWALKER™ LIGHTSABER™ DESK LIGHT**



## Important Safety Information

### Introduction

The operating instructions are to be considered as part of this desk light, they contain important information regarding use, safety and disposal. Before using the desk light please read through the operating instructions carefully taking time to familiarize yourself with all safety information and instructions for use. Only use the desk light in the way described and for the stated purpose, the manufacturer has no liability for damage which is caused by improper use or incorrect operation.

### Intended Use

The desk light is designed solely for occasional use, it is designed specifically for the household, and should only be used indoors at ALL times in a dry location.

### Items Included

1x Desktop Light. (LEDs are non-replaceable)  
1x USB Power Cable

### General Safety Instructions

ONLY use this desk light in accordance with this instruction manual. Please read these instructions carefully and keep for future reference, the manufacturer has no liability for damage which is caused by improper use or incorrect operation.

Check the voltage indicated on the rating plate.

This desk light is designed to be powered by USB.

Suitable for indoor use only, in a dry location.

Place the desk light on a flat surface and make sure it is not in direct sunlight.

This desk light is not intended for use by persons (including children) with reduced physical, sensory or mental capacities, or by those with lack of experience and / or knowledge, unless they are being supervised by a person responsible for their safety, or unless they have been given instructions by this person concerning use of the appliance. Children must never be allowed to play with the desk light.

**DO NOT** try to repair this desk light or power cord yourself, it must either be returned to the manufacturer or repaired by a qualified individual. Unsatisfactory repairs can lead to considerable danger for the user!

**DO NOT** use any optical devices such as a lens to look directly into the light beam.

To disconnect the desk light from the wall hold the power adapter, **DO NOT** pull the cord.

**⚠ CAUTION! RISK OF ELECTRIC SHOCK!**

**DO NOT** operate the desk light if it is damaged in anyway, a damaged desk light represents a danger from electric shock! Periodically check the power cord of this desk light and **DO NOT** use if damaged in any way.

This power adapter must only be replaced by the manufacturer, after sales or a qualified individual, to avoid any danger of electric shock.

**DO NOT** immerse the desk light, power cord, power adapter, or get the desk light wet in anyway.

**DO NOT** touch the desk light, power adapter with wet or perspiring hands.

**DO NOT** drop or insert objects into any opening.

**⚠ CAUTION! RISK OF OVERHEATING!**

**DO NOT** coll/bundle the power cord, or it may overheat.

**⚠ CAUTION! RISK OF FIRE!**

Never place the desk light in direct proximity to naked flames or other sources of heat.

**DO NOT** use flammable sprays near the desk light, to avoid risk of ignition.

**Power / Use Options**

Plug into the USB into a USB power source output DC 5V 1A, Max 5W.

## How to Build the Light

### Operation

Once you have successfully completed Steps 1-2 you can plug the adapter into a wall outlet, ensuring the cable is secure and does not pose as a tripping hazard.

1. To switch the light on, you can toggle the ON/OFF switch (located in-line on the power cable) to the ON position (Fig.5)
2. To switch the light off, you can toggle the ON/OFF switch (located in-line on the power cable) to the OFF position (Fig.5)

### STEP 1

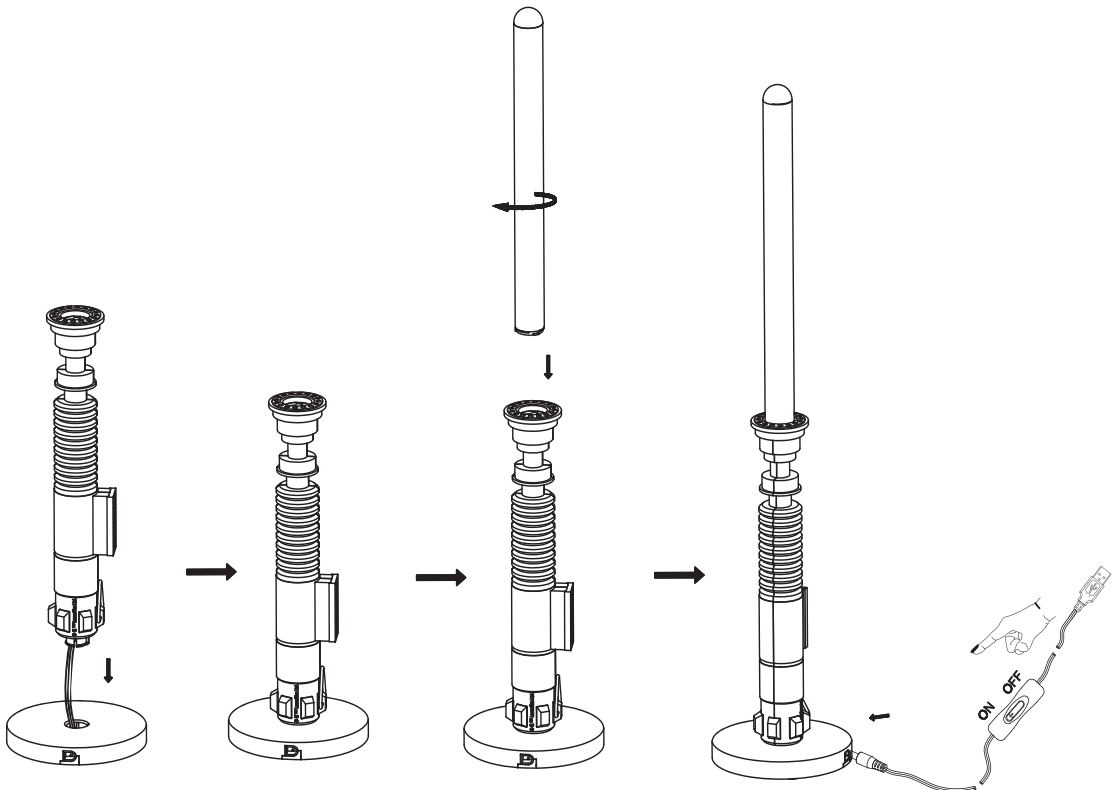
Following (Fig.1) remove all parts from the box and lay them down on a flat level surface. Take care when removing the tube light.

### STEP 2

Place the base on a flat level surface then, insert the tube light. Insert the male pin of the tube into the female jack located in the top of the hilt and rotate anti clockwise to secure the tube to the hilt. This should be a gentle hand turn. **DO NOT OVERTIGHTEN.**

Once the light is fully assembled you can insert the power jack into the power jacker socket in the base of the light.

Please ensure that the cable is secure and does not pose as a tripping hazard.





## Cleaning and Maintenance

Clean with soft dry cloth only. No cleaners or abrasives.

## Warranty

The warranty for this desk light is 6 months from the date of purchase. Any implied warranties, including the implied warranty of merchantability are also limited to the duration of 6 months from the date of purchase. The warranty is not transferable from the original purchaser.

The warranty begins on the date of purchase. Please retain the original receipt safely, this receipt is required as proof of purchase.

Should this desk light show any fault in materials or manufacture within 6 months from the date of purchase, it will be repaired or replaced at our choice by us free of charge.

The warranty is covered by our warranty, you will receive the repaired desk light back or a new desk light. A new warranty period does not commence with the repair or with the exchange of the desk light: the warranty period will not be extended by repairs or exchange made under warranty.

The warranty applies to faults (material or manufactured), the warranty does not extend to accidental abuse, misuse or neglect. The warranty lapses if the desk light is deemed to be damaged through accidental abuse, misuse or neglect or if it was not maintained properly as per the directions given in the general instructions section.

The warranty will become void if any attempt is made to alter the product in any way.

## Warranty Procedure

Please have your receipt and the model number available for all queries, the model number can be located on the rating label on the desk light itself.

Should any fault or defect arise, please email [support@ukonic.com](mailto:support@ukonic.com), provided you can provide a copy of proof of purchase and the warranty period has not expired, we will begin our warranty process.

Product returns which have been notified in advance and in accordance with the procedure cannot be processed.

## Product Disposal

When your desk light has come to the end of its life, please do not throw it out with other household refuse. In the interests of the environment please take your desk light to a suitable center where it can be disposed of properly. For more information on this subject please contact your local refuse authority for further detail.

THE  
**SOURCE**

www.thesourcewholesale.co.uk

MANUFACTURED AND IMPORTED BY:

**THE SOURCE WHOLESAL**

The Atrium, Curtis Rd, Dorking RH4  
1XA, United Kingdom

**THE SOURCE WHOLESAL BV**

Joop Geesinkweg 701, 1114 AB  
Amsterdam-Duivendrecht

**THE SOURCE WHOLESAL INC.**

2055 Limestone Rd STE 200-c,  
Wilmington, USA 19808

**Made in Dongguan, China**

customer.services@giftuniverse.com

Supplier item reference: 16987

128085 820421

**STAR  
WARS**™

**starwars.com**

© &™ Lucasfilm Ltd.

**16987 STAR WARS™ LUKE SKYWALKER™ LIGHTSABER™ DESK LIGHT**

**DESIGNED IN THE U.S.A.**

**MADE IN CHINA**

Please keep packaging for future reference

For technical support please contact: support@ukonic.com

made by  
**UKONIC**

ROBE FACTORY LLC / UKONIC  
1725 Chaparral Road, Suite 110  
Henderson, NV 89044  
www.ukonic.com



Manufacturer:  
DongGuan City TianHua Photoelectric Technology Co., Ltd.  
No.3, 2nd Road, JinQianLing Industrial Zone, JiTiGang  
Village, HuangJiang Town, 523757 DongGuan City,  
GuangDong Province,  
PEOPLE'S REPUBLIC OF CHINA

30 3586 140725