

Lifemax



**2208 - RECHARGEABLE FOLDAWAY FAN**

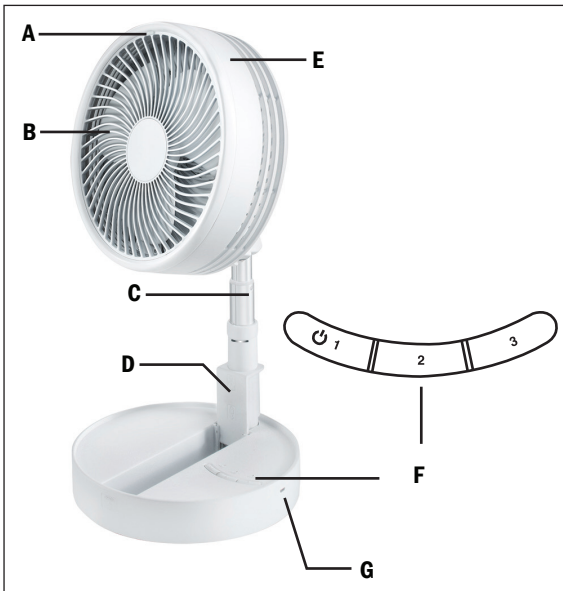
## **USER MANUAL**

Please read this manual thoroughly before using and save it for future reference.

# Lifemax

Thank you for purchasing a Lifemax Rechargeable Foldaway Fan. We hope you'll get many years of use from this product. We recommend you read this document thoroughly to familiarise yourself with how your product works, how you should use it safely and effectively and how to look after your product to ensure it continues working as it should.

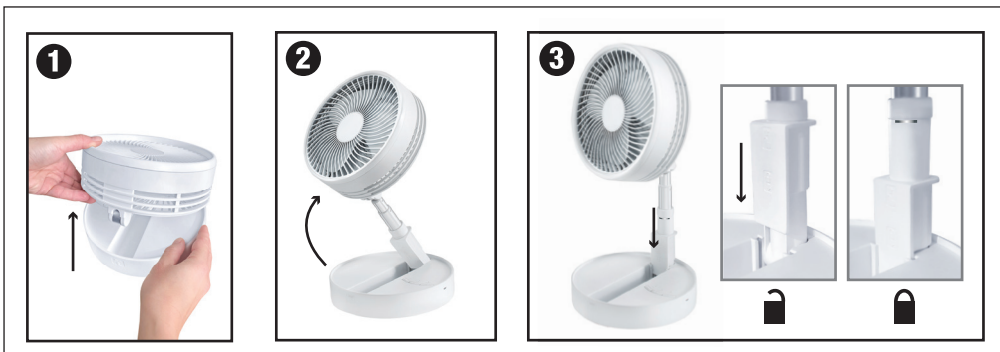
Picture 1



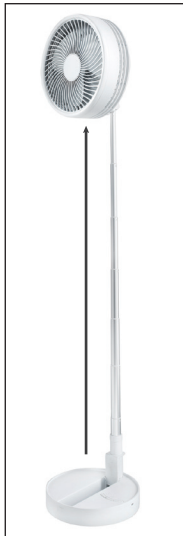
Picture 2



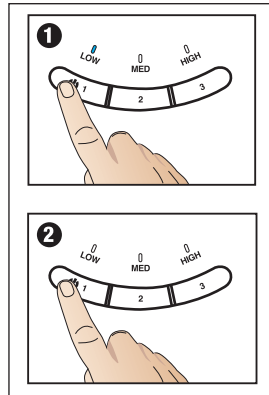
Picture 3



Picture 4



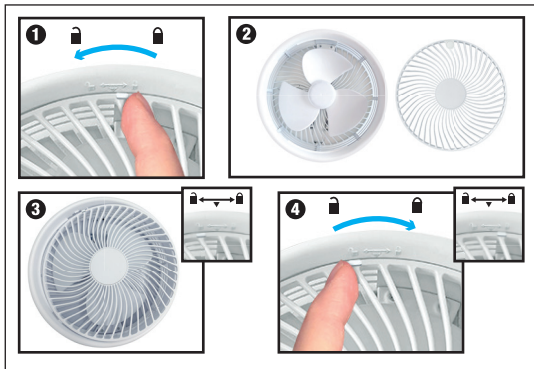
Picture 5



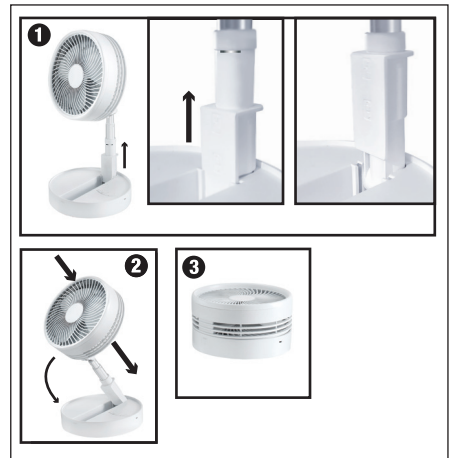
Picture 6

|                     |                  |
|---------------------|------------------|
|                     |                  |
| <b>100 % - 70 %</b> | <br>LOW MED HIGH |
| <b>69 % - 40 %</b>  | <br>LOW MED HIGH |
| <b>39 % - 10 %</b>  | <br>LOW MED HIGH |
| <b>&lt; 10 %</b>    | <br>LOW MED HIGH |

Picture 7



Picture 8



---

Please read this manual thoroughly before using and save it for future reference.

## **WARNINGS**

1. This device can be used by children aged from 8 years and above as well as by persons with reduced physical, sensory or mental capabilities or lack of experience and knowledge if they have been given supervision or instruction concerning use of the device in a safe way and understand the hazards involved. Children shall not play with the appliance. Cleaning and user maintenance should not be done by children unless they are older than 8 and supervised.
2. Children must be supervised not to play with this device.
3. This device is intended for household, indoor and dry use only.
4. Before use, place the product on hard, flat, stable and dry surface.
5. If the device is not working as it should, has received a sharp blow, has been dropped, damaged, left outdoors or dropped in-to water, do not use it.
6. Do not attempt any modification or repair by yourself and ensure that any repair is conducted only by appropriately qualified technician.
7. If the supply cord is damaged, it must be replaced immediately by authorized and qualified person only.
8. Use care when operating the device by keeping all foreign objects, fingers, body parts, hair, loose clothing and jewelry away from openings.
9. Plug in power supply that corresponds to the rated one on product only.
10. This device should never be switched on while un/folding or during cleaning.
11. Never use the device unless it is fully assembled.
12. Regularly remove blockages caused by dust, fluff, hair etc. because they greatly reduce device's suction power and/or general performance.
13. Although the product has been checked its usage and consequences are strictly user responsibility.

### **1. PARTS (see PICTURES, Picture 1):**

A = cover release tab

B = removable cover

C = telescopic arm

D = lock

E = fan

F = speed and battery power indicator

- 1 = power button/low speed
- 2 = medium speed
- 3 = high speed

G = USB socket

H = power cable

### **2. BEFORE USE**

Device can be placed in two positions (see PICTURES, picture 2):

1. Table fan position (1)
2. Floor fan position (2)

TABLE POSITION (see PICTURES, picture 3):

Step 1: Hold the base of the fan down with one hand and lift the top up with the other hand (1).

Step 2: Bring the arm up (2).

Step 3: Lock the arm by sliding the lock down - "click" sound(3).

FLOOR POSITION (see PICTURES, picture 4):

Extend the telescopic arm to the desired height.

### **3. CHARGING**

Option 1: Insert power cable with one end into USB socket and the other end in charger (not included) before plugging it into power supply.

Option 2: Insert power cable with one end into USB socket and the other end in USB port (of computer, power bank or similar).

Once plugged in, charging will start automatically. Indicator lights will display the charging process by blinking alternatively. Fan can operate while charging.

- Less than 39 % battery power remaining: indicator lights will cycle through Low, Medium and High while charging.
- 40 % to 60 % charged: indicator lights will cycle through Medium and High, while the light for Low will remain solid.
- 70 % to 90 % charged: indicator lights for High will blink, while the lights for Low and Medium will remain solid.
- Fully charged: all 3 indicator lights will remain solid.

#### 4. USAGE

Step 1: Press and hold the power/1 button for three seconds. Fan will switch on to low speed mode. This is default mode. LOW indicator will briefly illuminate (see picture 5.1) before battery power indicators will turn on (see PICTURES, picture 6).

Step 2: Press the 2 button to switch to medium speed mode (MED indicator light will briefly illuminate).

Step 3: Press the 3 button to switch to high speed mode (HIGH indicator light will briefly illuminate).

Step 4: Press and hold the power/1 button for three seconds to turn the fan off (see PICTURES, picture 5.2).

#### Battery power chart (see PICTURES, picture 6)

While the fan is on, 3 LED indicator lights will display current battery power.

NOTE: The fan will automatically shut down when the battery power runs out.

#### 5. CLEANING AND MAINTENANCE

##### Cleaning

Step 1: To remove cover, push the cover release tab in counterclockwise direction to unlocked position  (see PICTURES, picture 7.1).

Step 2: Clean off the dust cover. Cover is washable. Use a soft, damp cloth to clean inside of the fan (see PICTURES, picture 7.2). Dry thoroughly before further use or storage.

Step 3: Align the grooves on the fan and the cover. Place cover back on. Make sure the release tab is aligned with  (unlocked) (see PICTURES, picture 7.3).

Step 4: Push the cover release tab in clockwise direction to slide it into locked position  (see PICTURES, picture 7.4).

##### Maintenance

When done using the fan, make sure to return it to its folded position.

Step 1: Unlock the arm by sliding the lock up (see PICTURES, picture 8.1).

Step 2: Fold the arm by pressing it down (see PICTURES, picture 8.2).

Step 3: Fold the top part of the fan (see PICTURES, picture 8.3).

NOTE: Always make sure to push the lock all the way up to fully unlock the arm, to avoid damage to the unit.

#### 6. TROUBLESHOOTING

- If the device is not working, check if the battery is fully charged. Charge it if needed.
- If the device is still not working, check if it is positioned correctly, on hard, flat, stable and dry surface.



Lifemax Limited, 1 Pipers Court,  
Thatcham, Berkshire, RG19 4ER

Lifemax (Ireland), 51 Bracken Road,  
Sandyford, Dublin, D18 CV48

[www.lifemaxuk.co.uk](http://www.lifemaxuk.co.uk)



Made in China

## Technical Specification

Model No: 2208

Battery Capacity: 3600mAh

Charging Time: 4 hours

Power Input: 5V 1A

Working Time: 3-3.5 hours (high) | 5.5-6 hours (mid) | 10-12 hours (low)