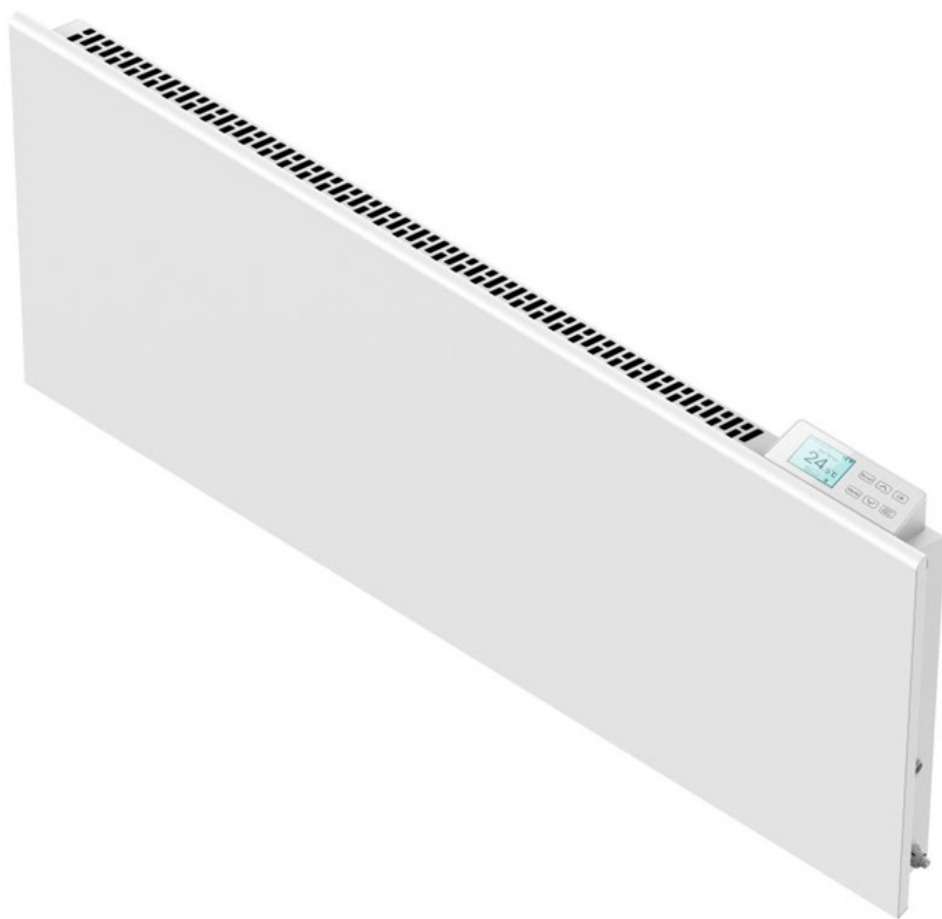


LYNDO Product Data Sheet



Lyndo Functions

Manual Mode:

In the heaters settings you can access:

- Comfort temperature
- Eco temperature
- Antifrost temperature
- 24/7 Schedule
- Further settings:
 - Time setting
 - Open window setting
 - Temperature calibration
 - Sound (on/off)
 - Energy meter
 - Password for limit mode
 - Factory reset

Ranges 7-35 Degrees C

Press "Mode" to cycle between "manual", "program" and "Standby"

WiFi Mode:

Push and hold "ok" for 11 seconds to enable WiFi.

The Lyndo has the "Auto-Pair" feature that uses Bluetooth when the WiFi has been enabled for easy pairing.

All settings listed below "Manual Mode" can be controlled via the app.

Limit Mode:

Press and hold "Mode" and "Boost" at the same time for 11 seconds to enable limit mode manually.

The heater will ask for a password, there is a default password of 1268, but this can be changed in the heater's settings by the user. This can be done on the app or using the heaters display.

Base settings:

- Eco – 15 degrees C but can be reduced to 7 degrees C but cannot be increased. The maximum Eco setting can be changed from 15 degrees C in the heater's settings.
- Boost – 1 or 2 hours – defaulted to 24 degrees C but can be reduced for each boost period. This maximum cannot be increased from 24 degrees C.

24/7 Timer:

To get to the timer/weekly programme, turn the heater on, press "menu" and choose "programming"

Multiple time periods can be set for each day choosing between Comfort, Eco and Antifrost.

Each day can be different or days can be copied over.

The programme can also be set via the WiFi app.

SolAire LYNDO

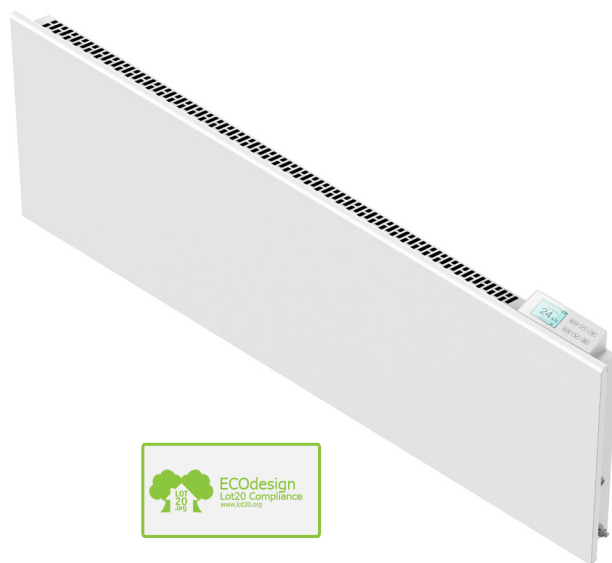
Overview

Energy efficient electric heater with a modern and slim design. In built WiFi and manual controls. Fully ERP LOT20 compliant.

- Programmable thermostat and timer
- WiFi Controlled
- Wall Mounted
- Splashproof IPX4

Specs

Room Sensors	<ul style="list-style-type: none"> • Electric Thermostat - accurate to (1 °C) range 7-35°C
Programmer	<ul style="list-style-type: none"> • 24 hour 7 day timer. • 3 Heating Modes - "Comfort", "Eco" and "AntiFrost" • Set each hour of the week to one of the heating modes
Control	<ul style="list-style-type: none"> • Thermostatic control • 24 / 7 timer • Manual control panel • WiFi and App Control • 1 or 2 hour boost mode • Limit mode for controlled living accommodations • Anti tamper lock • Open window detection
Display	<ul style="list-style-type: none"> • TFT digital touch display
Limit Mode	<ul style="list-style-type: none"> • Locked to ECO mode • Control panel locked. Can only be used to select 1 or 2 hours of boost temperature • Temperatures can only be changed via the App or exiting the limit mode • Pass code required to deactivate
Installation	<ul style="list-style-type: none"> • 1 H wall bracket
Protection	<ul style="list-style-type: none"> • IP24 • Over heat protection
Element	<ul style="list-style-type: none"> • Aluminium X fin
Flex Length	<ul style="list-style-type: none"> • 1.3m
Clearances	<ul style="list-style-type: none"> • 50mm below, 150mm above, 50 in front
Material	<ul style="list-style-type: none"> • Mild Steel



Detail

Guarantee	5 Years (Bodywork and Electronics)
Manufacturer	SolAire
Colours	White

Codes	Size(mm)	Weight(Kg)	
LYN05	500w	450 x 435 x 90	4
LYN07	750w	450 x 435 x 90	4
LYN10	1000w	450 x 515 x 90	4.7
LYN12	1200w	450 x 595 x 90	5
LYN15	1500w	450 x 675 x 90	6
LYN20	2000w	450 x 835 x 90	7
LYN25	2500w	450 x 995 x 90	7.5

WiFi Requirements

Wi-Fi 2,4 GHz, WPA2, 802.11 b/g/n + Bluetooth

iPhone (10.0 or higher) Android 5.0 or higher

Ensure that there is a good Wifi signal where the heater will be installed.

Frequently Asked Questions

Q: Are you a WiFi controlled heater?

A: Yes. I work on the Tuya platform and offer reliable and up to date WiFi access.

Q: Is it an easy operation to connect to you?

A: Yes. I have the option of "Auto Pairing" making it very simple to connect to your network.

Q: What if the WiFi is down? Can I still use you?

A: Yes. I have a complete built in 24/7 programming function direct from the control board.

Q: Can you be locked to avoid tampering?

A: Yes. I can be locked from both the App and the control screen. I am password protected, which can be set from the settings screen.

Q: Do I know how much energy I am using when you are working?

A: Yes. Within the App I show full visibility of current usage.

Q: Do you have open window detection?

A: Yes. It can easily be enabled/disabled from the settings screen.

Q: What if I wanted to use you in limited access situations? Student halls of residence, etc.

A: No problem at all. With the screen locked the only option is to boost me from the Eco setting to the comfort setting for either 1 or 2 hours. I will then revert to Eco to ensure that I am saving money where possible.

Q: Can I install you in a bathroom?

A: Yes. I am IPX4 rated so suitable for bathroom zones 1 and above.

Q: Are your factory default settings open to change?

A: Yes. Eco is default 15°C. Comfort is default 24°C. Both temperature settings can be modified to suit.

Q: Will I lose all my settings if the power were to fail?

A: No. I have an in-built memory chip to save any set functions for 28 days.

Q: Can I calibrate your thermostat to be closer to the actual room temperature?

A: Yes. I have full electronic thermostat calibration from the settings screen.

Q: Do you have an audible alert when changing functions?

A: Yes. This can also be disabled if it is not required.

Q: What type of guarantee can I expect if I buy you.

A: For retail sales I come with a 3-year manufacturer's guarantee from the date of purchase. For large contracts I will come with 3 years guarantee from the date of completion.

Q: What happens if someone accidentally breaks, the very clear to read, TFT display screen?

A: I have been designed to have sacrificial parts replaced. No need to throw me away, just speak to Sol*Aire for a replacement screen, which will be a nonprofit item, and it can be easily swapped over.