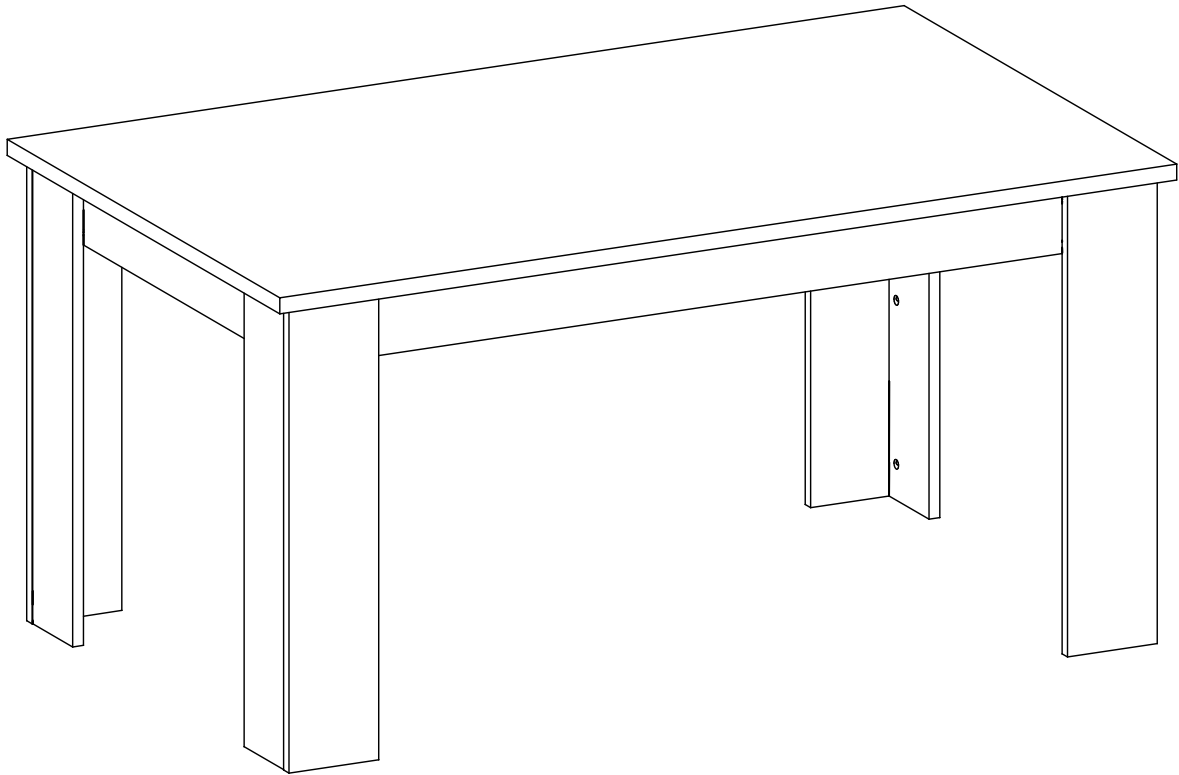


LANCASTER - DINING TABLE 1200mm ASSEMBLY INSTRUCTIONS

Thank you for purchasing the **DINING TABLE**.
Please read the instructions carefully to ensure safe operation of the product.



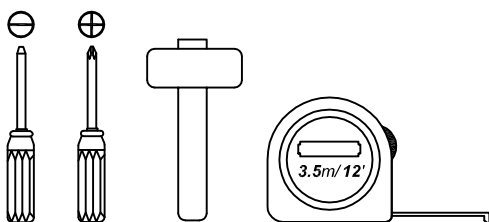
Size: (W)1200 x (D) 900 x (H)750mm
Colour : Bianco Oak / Lancaster Grey

PLEASE READ this sheet prior to assembly to familiarise yourself with the various stages of construction.

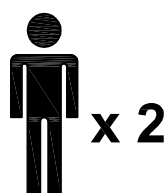
Carefully open the pack supplied and check the contents against the parts and fittings check list. Do not destroy any of the packaging until you are certain that you have all the necessary parts for the assembly.

CAUTION: There are small components used in the construction of this unit. These loose items should be kept away from young children whilst assembling your unit to avoid the danger of choking hazards.

Tools Required



Person Required



Approximate Assembly Time



IMPORTANT - READ CAREFULLY - RETAIN THESE INSTRUCTIONS FOR FUTURE REFERENCE.

INFORMATION

- This product is intended for a maximum weight of **30kgs**
Do not exceed this weight.
- Due to the size of this product we recommend that it is assembled in the room intended for use.
- When you ready to start, make sure that you have the right tools, plenty of space and a clean, dry area for assembly
- Unwrap all packaging materials and place the components on top of the carton box or not on a clean floor to prevent it from scratching.
- Check the pack and make sure you have all the parts listed.
- Ensure that this product is fully assembled as illustrated before use.
- Check all screws or bolts are tightened and inspect regularly.
- This product should only be used on firm, level ground.
- Keep small parts out of reach of children.
- Make sure the legs remain in contact with the ground.
- Tools not included.

WARNINGS

- DO NOT use power tools to construct this product.
- DO NOT tighten screw until fully assembled.
- DO NOT over tighten screw or bolts.
- DO NOT stand or sit on this Dining Table.
- DO NOT Place hot items or liquids directly onto the top surface otherwise this will permanently damage the item.
Always use a heat resistant mat if placing such item on the surface.

CARE INFORMATION

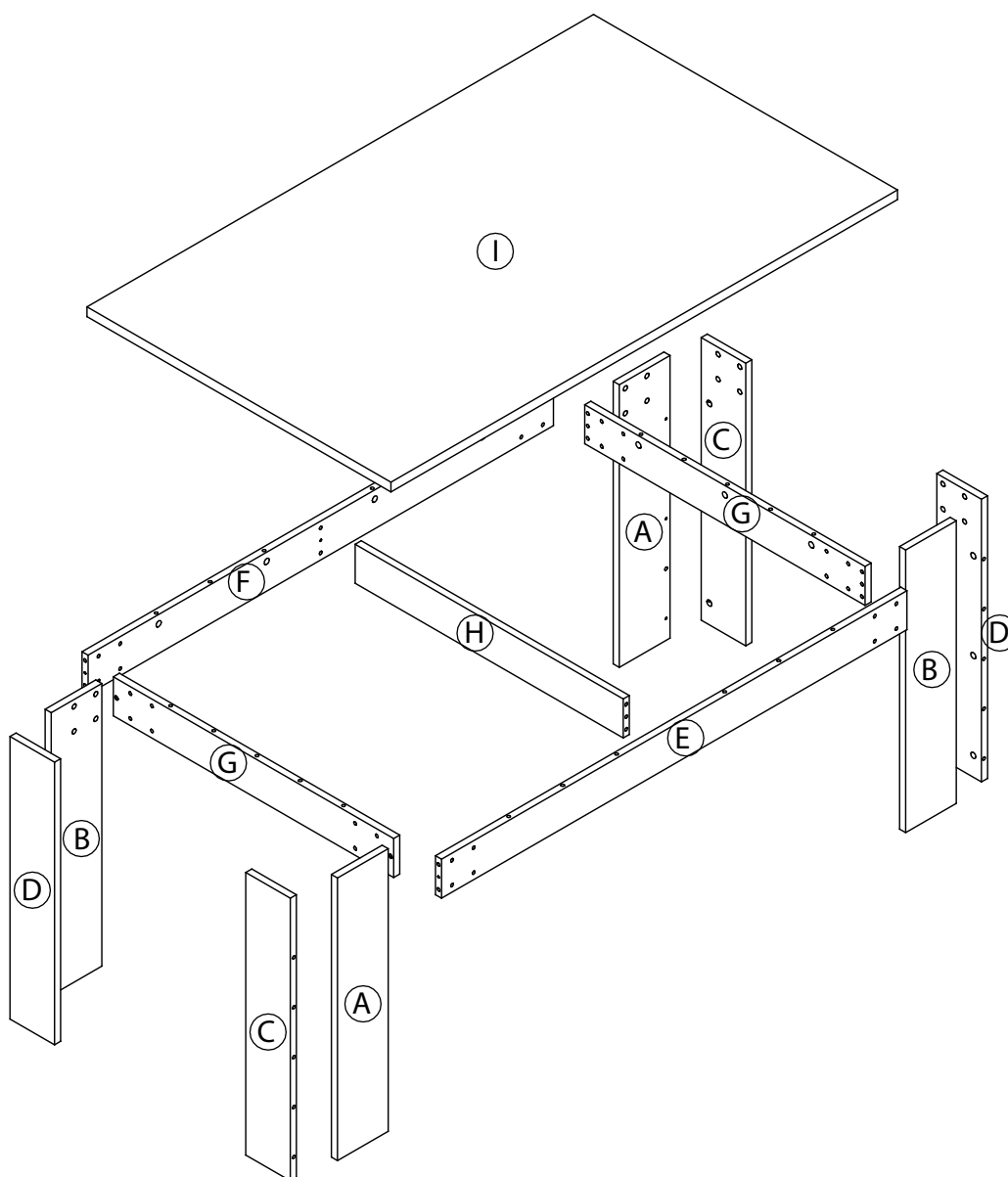
- Never use scourers, abrasives or chemical cleaners.
- To clean wipe with a sponge and soapy water. Do not use solvent based cleaners or detergents as they can bleach or damage the product.
- Any spilled liquids must be wiped up and removed immediately. Clean with a gentle sponge or clean cloth using warm soapy water making sure that any residual liquid is fully removed.
- Do not use Solvent based cleaners or detergents as they can bleach and damage the product.

Please check the pack contents before assembling the product. If any components are missing, please contact your retailer. The fittings pack contains small items that should be kept away from small children.

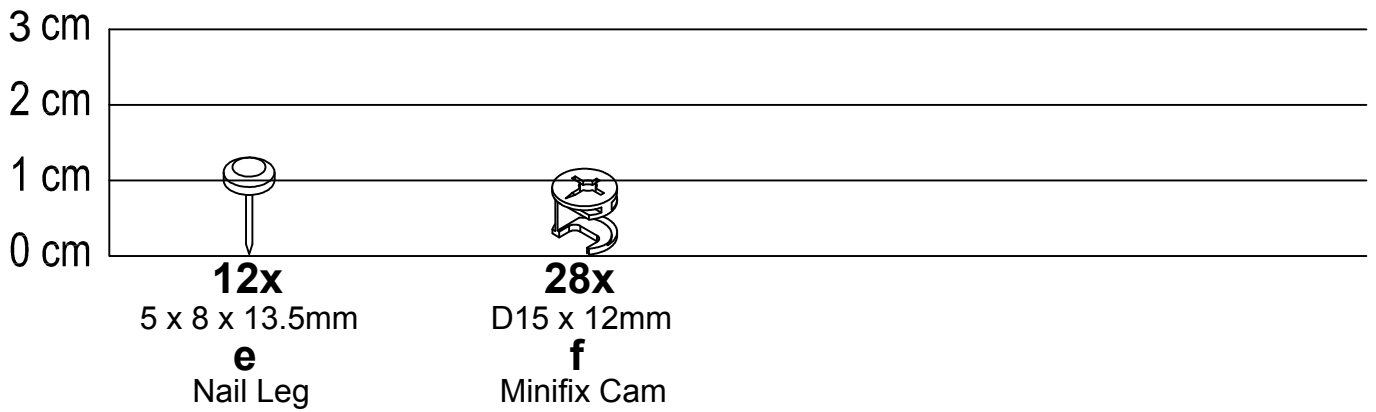
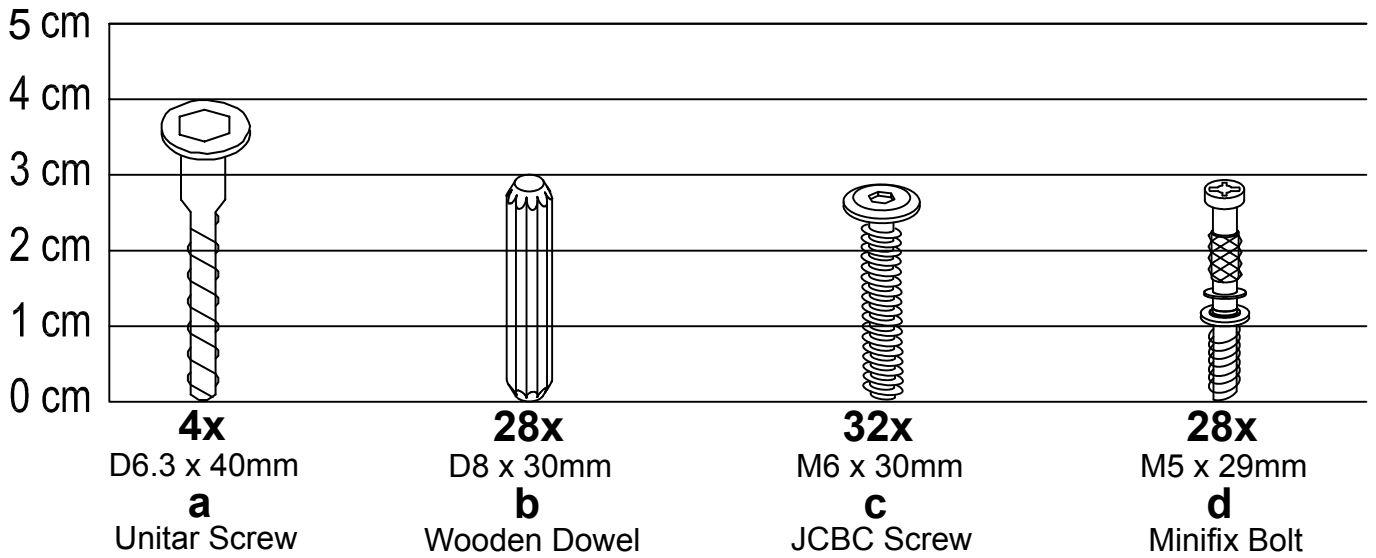
Parts

CODE	PART NAME	QTY
A	Leg Panel Big (1) (18 x 150 x 725mm)	2
B	Leg Panel Big (2) (18 x 150 x 725mm)	2
C	Leg Panel Small (1) (18 x 132 x 725mm)	2
D	Leg Panel Small (2) (18 x 132 x 725mm)	2
E	Front Panel (18 x 100 x 1378mm)	1

CODE	PART NAME	QTY
F	Back Panel (18 x 100 x 1378mm)	1
G	Side Panel (18 x 100 x 830mm)	2
H	Center Panel (18 x 100 x 794mm)	1
I	Top Panel (25 x 900 x 1500mm)	1

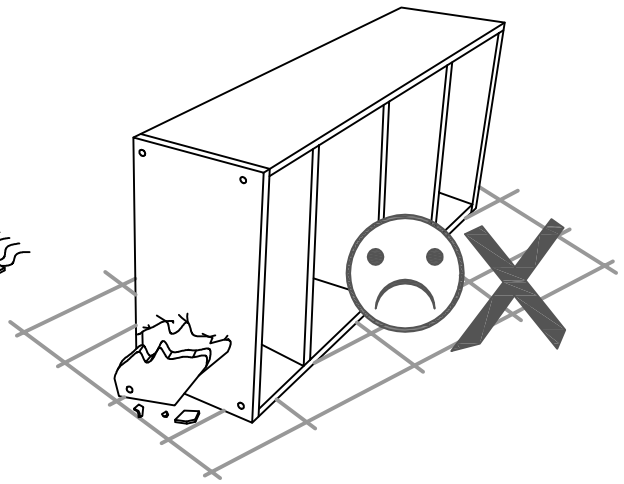
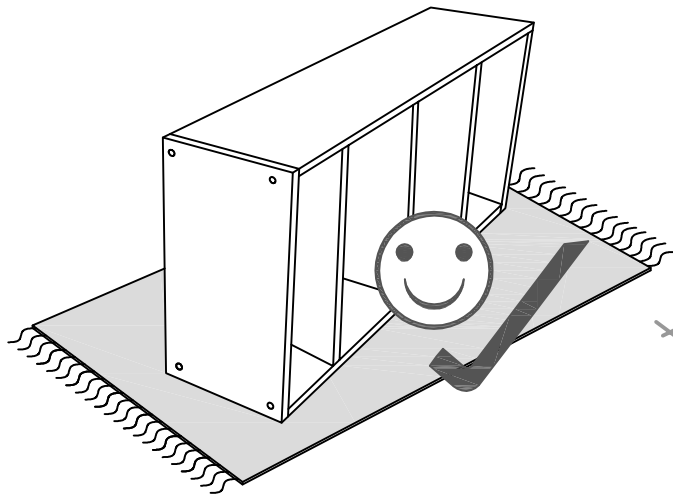


Fixings (to scale)



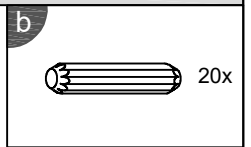
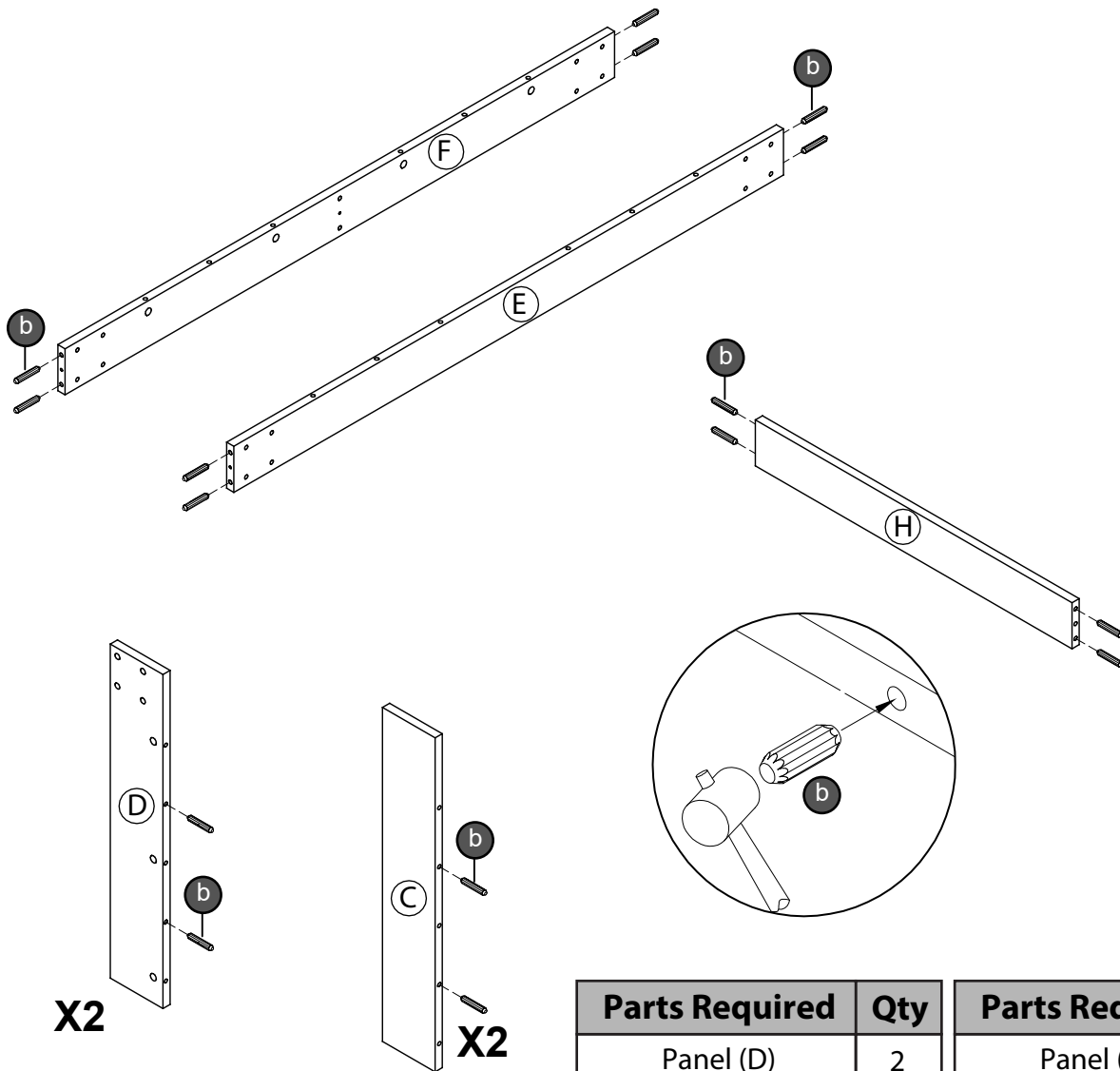
Fixings (not to scale)





Layout Parts on Soft Surface

STEP 1



X2

X2

Parts Required	Qty	Parts Required	Qty
Panel (D)	2	Panel (F)	1
Panel (C)	2	Panel (H)	1
Panel (E)	1		

STEP 2

Parts Required

Parts Required	Qty
Panel (A)	2
Panel (B)	2
Panel (E)	1

Parts Required

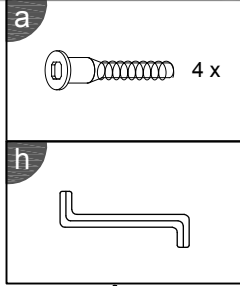
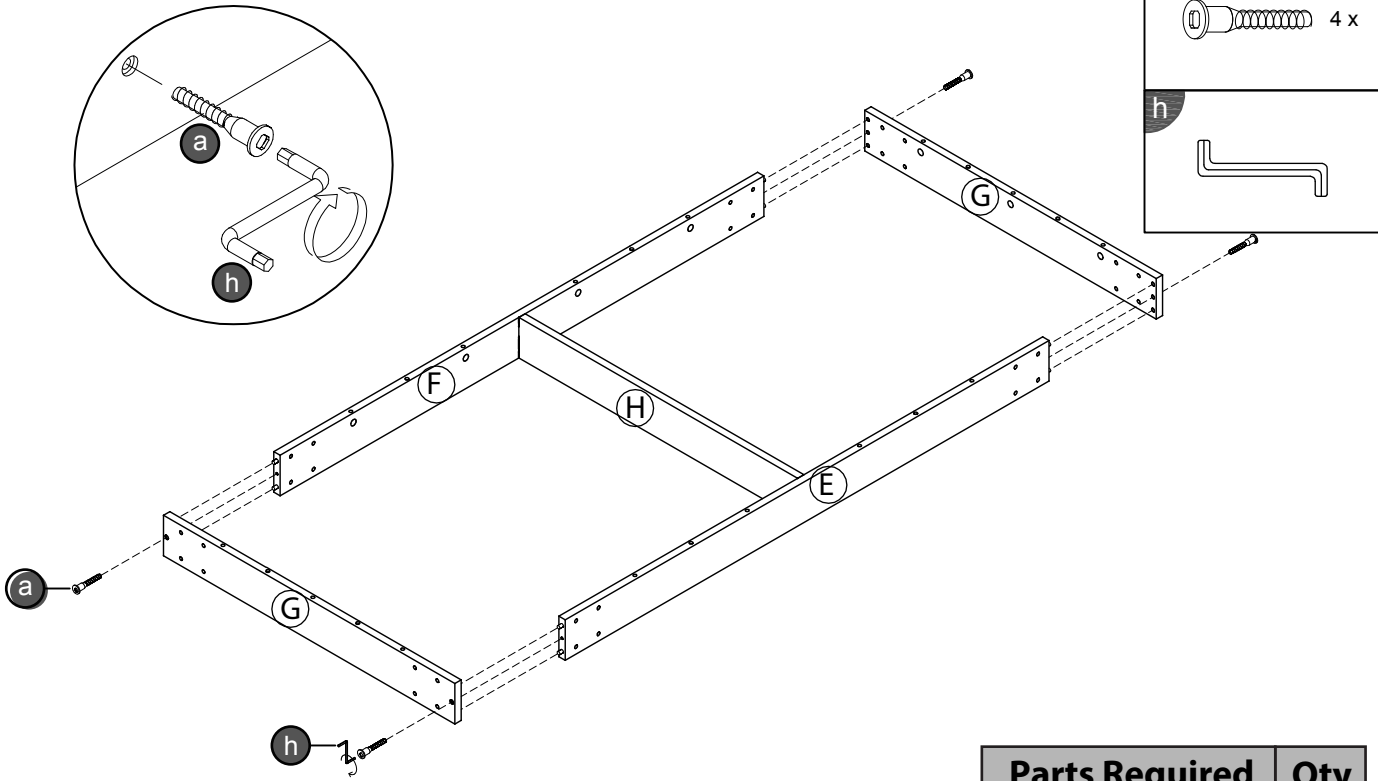
Parts Required	Qty
Panel (F)	1
Panel (I)	1

STEP 3

Parts Required

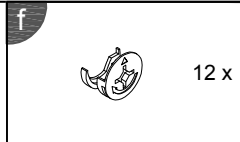
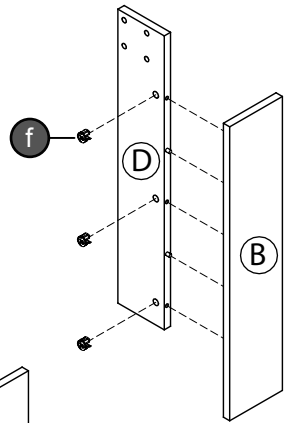
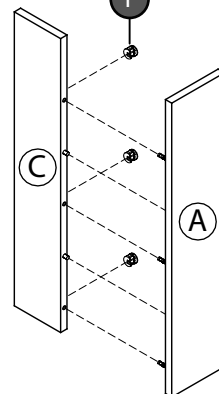
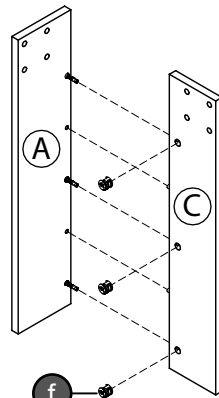
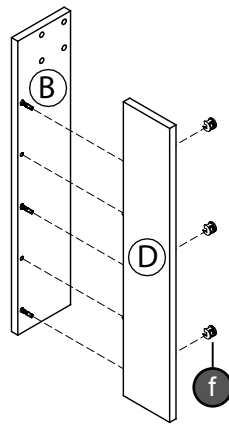
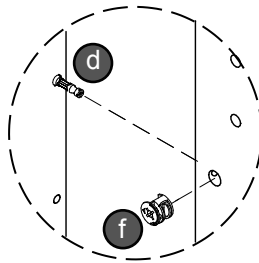
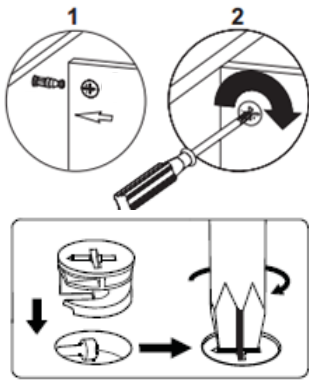
Parts Required	Qty
Panel (E)	1
Panel (F)	1
Panel (H)	1

STEP 4



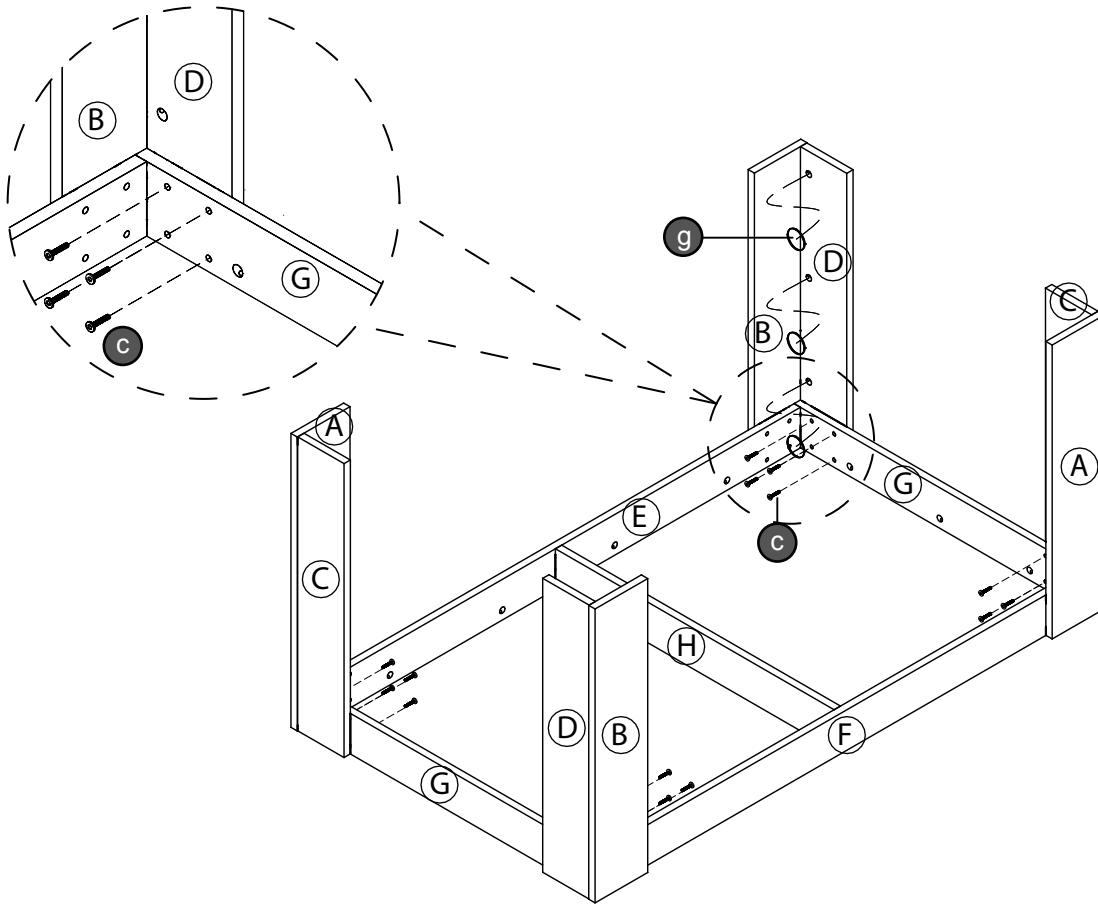
Parts Required	Qty
Panel (G)	2

STEP 5

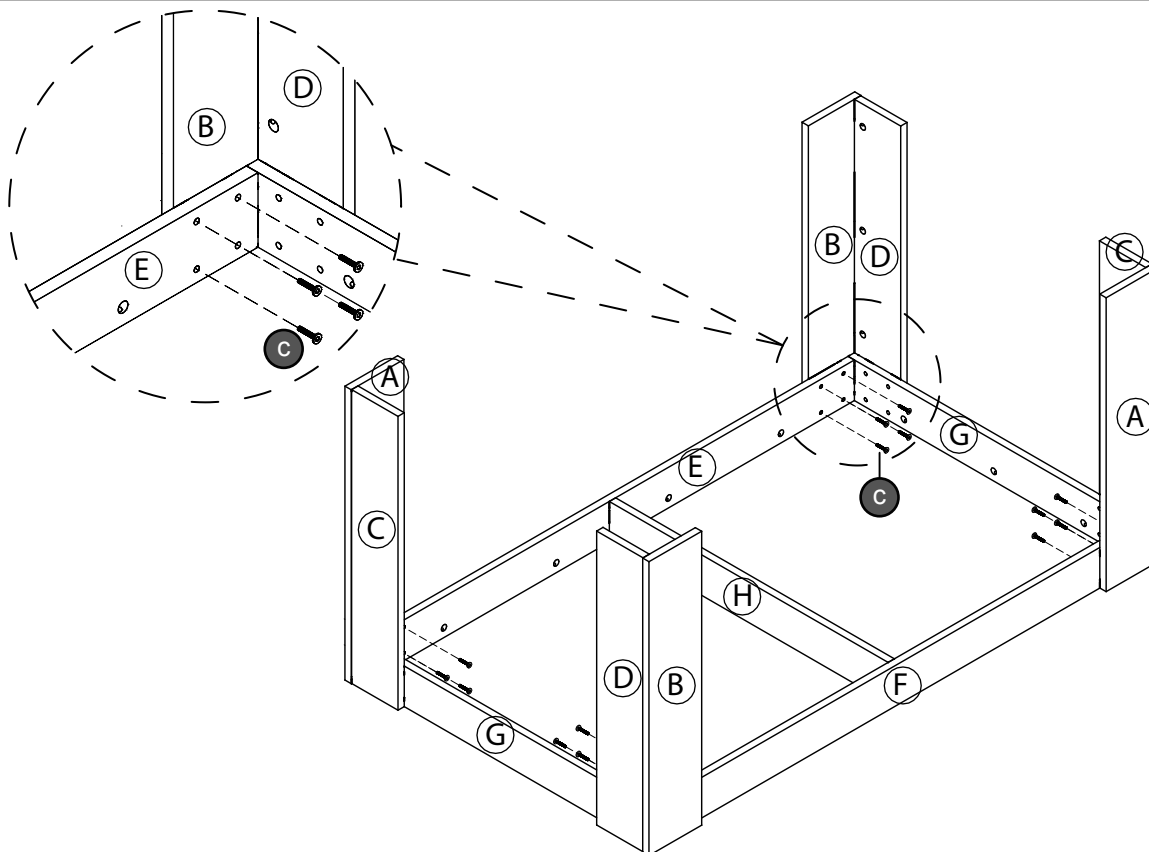


Parts Required	Qty
Panel (A)	2
Panel (B)	2
Panel (C)	2
Panel (D)	2

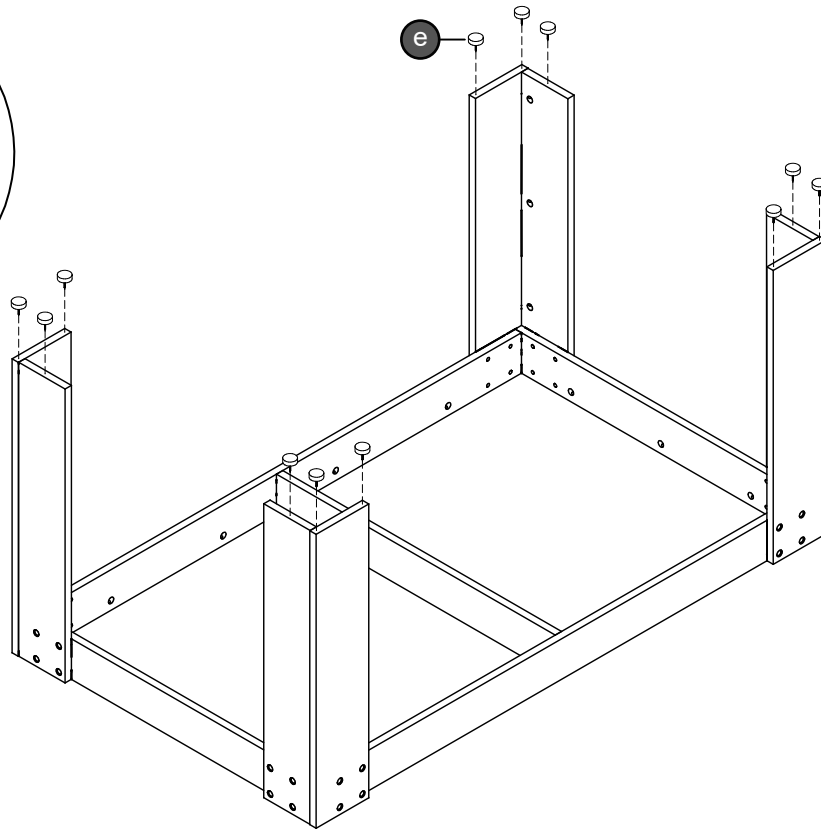
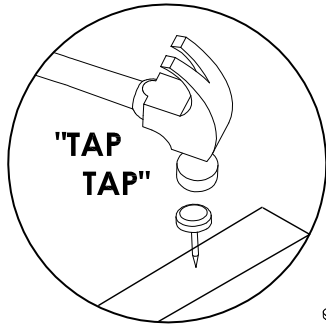
STEP 6



STEP 7



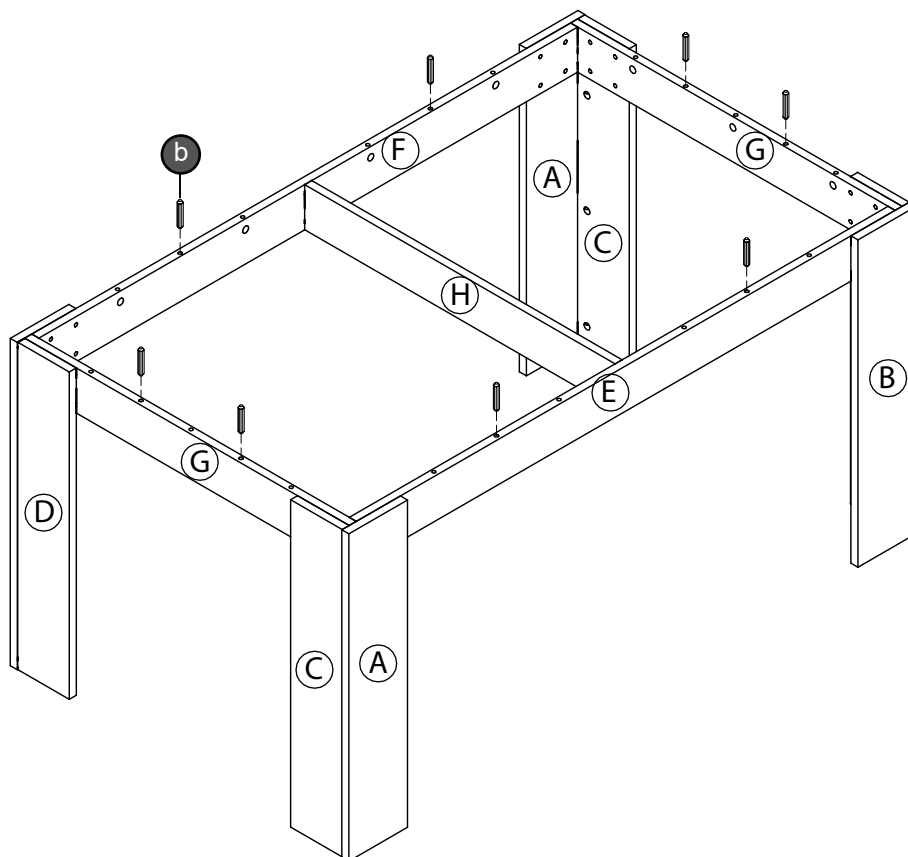
STEP 8



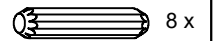
e



STEP 9



b

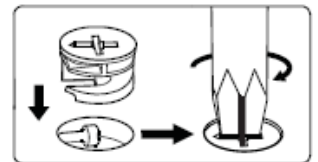
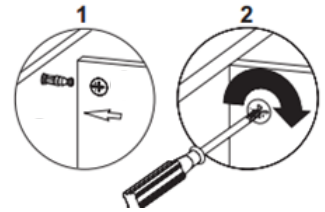
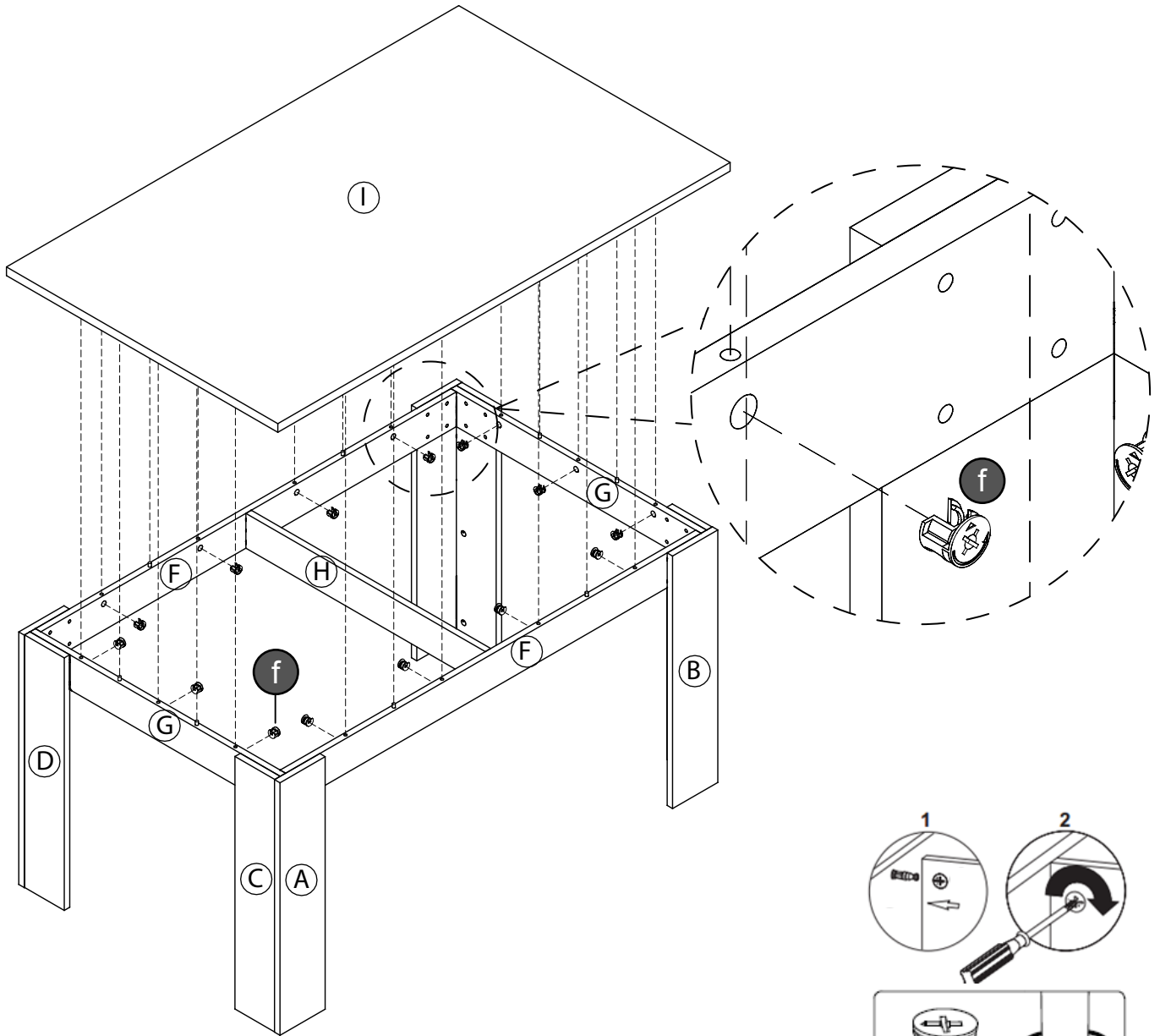


STEP 10

f



14 x

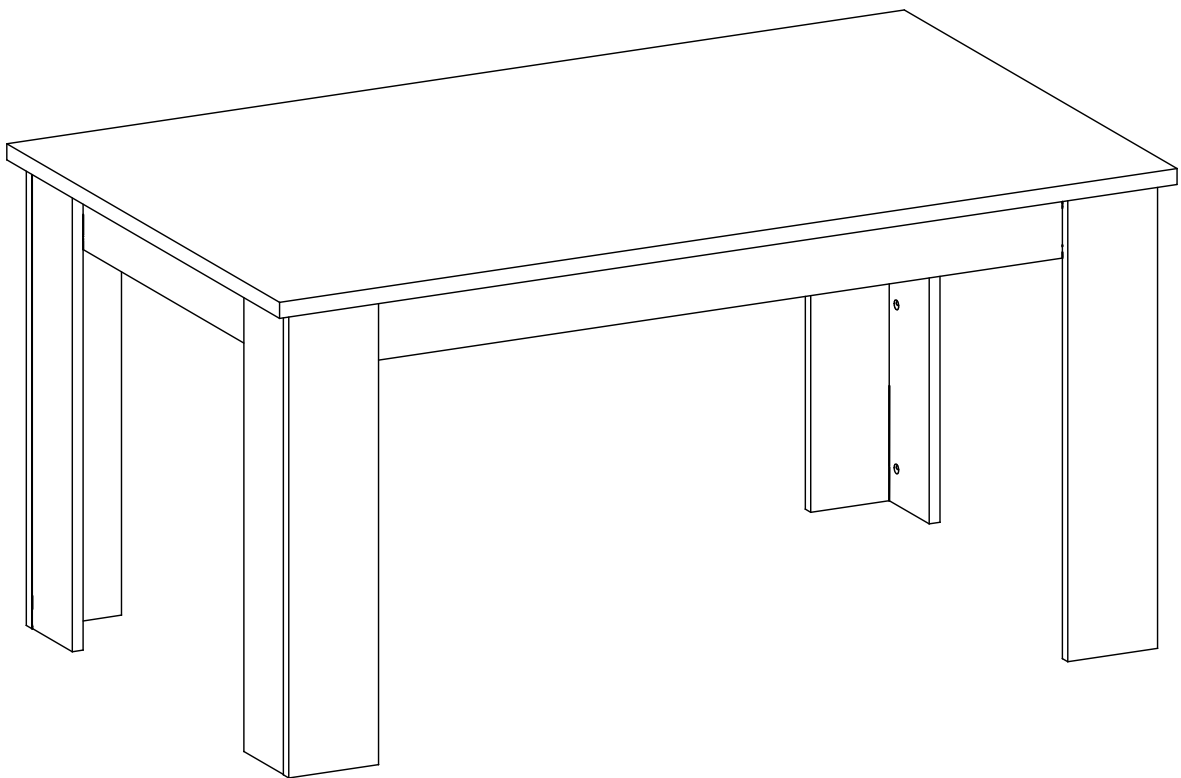


Parts Required	Qty
Panel (I)	1

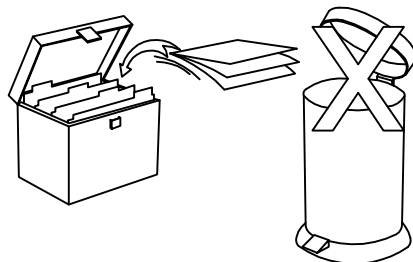
Complete Assembly

Your **LANCASTER DINING TABLE 1200mm** is now completely assembled

Periodically check to ensure that the components are in their proper position, free from damage. Also, make sure the connectors are tight and secure.

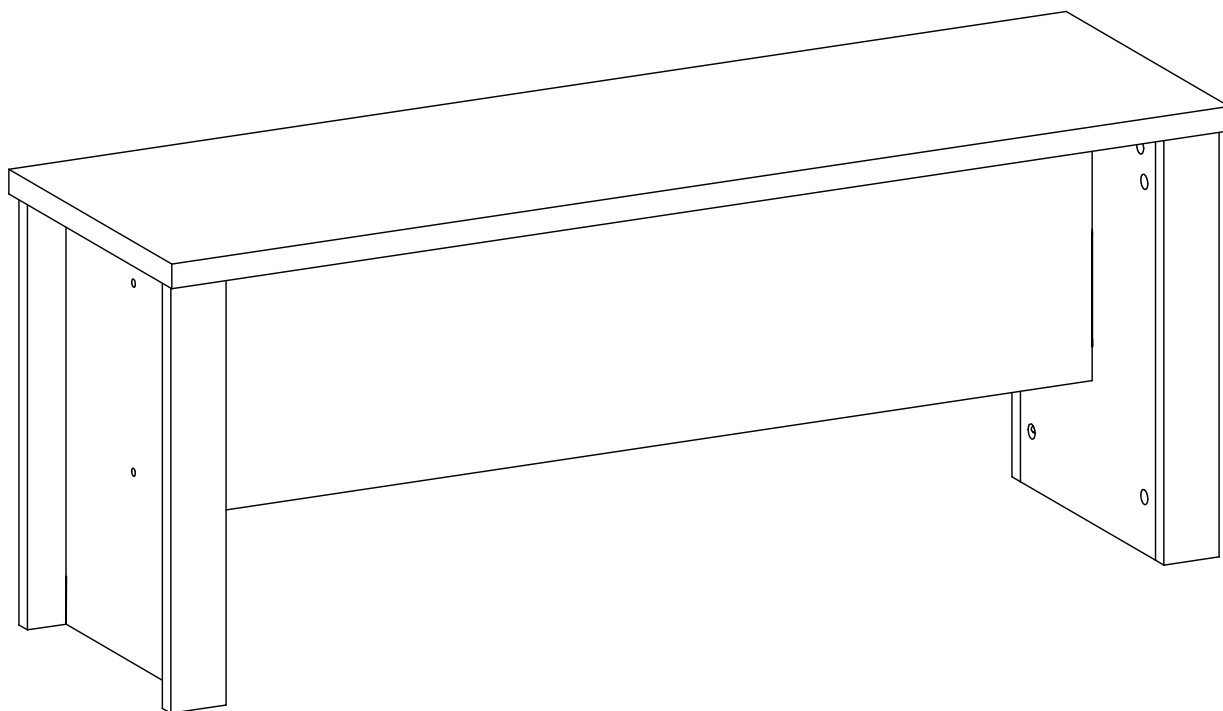


Keep instructions for future reference



LANCASTER - BENCH 850mm ASSEMBLY INSTRUCTIONS

Thank you for purchasing the **BENCH**.
Please read the instructions carefully to ensure safe operation of the product.



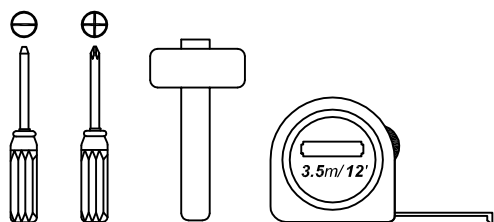
Size: (W)850 x (D) 350 x (H)460mm
Colour : Bianco Oak / Lancaster Grey

PLEASE READ this sheet prior to assembly to familiarise yourself with the various stages of construction.

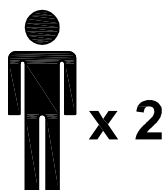
Carefully open the pack supplied and check the contents against the parts and fittings check list. Do not destroy any of the packaging until you are certain that you have all the necessary parts for the assembly.

CAUTION: There are small components used in the construction of this unit. These loose items should be kept away from young children whilst assembling your unit to avoid the danger of choking hazards.

Tools Required



Person Required



Approximate Assembly Time



IMPORTANT - READ CAREFULLY - RETAIN THESE INSTRUCTIONS FOR FUTURE REFERENCE.

INFORMATION

- Due to the size of this product we recommend that it is assembled in the room intended for use.
- When you are ready to start, make sure that you have the right tools, plenty of space and a clean, dry area for assembly.
- Unwrap all packaging materials and place the components on top of the carton box or not on a clean floor to prevent it from scratching.
- Check the pack and make sure you have all the parts listed.
- Ensure that this product is fully assembled as illustrated before use.
- Check all screws or bolts are tightened and inspect regularly.
- This product should only be used on firm, level ground.
- Keep small parts out of reach of children.
- Make sure the legs remain in contact with the ground.
- Tools not included.

WARNINGS

- DO NOT use power tools to construct this product.
- DO NOT tighten screw until fully assembled.
- DO NOT over tighten screw or bolts.
- DO NOT stand on this product.
- DO NOT use if any parts become detached or damaged.

CARE INFORMATION

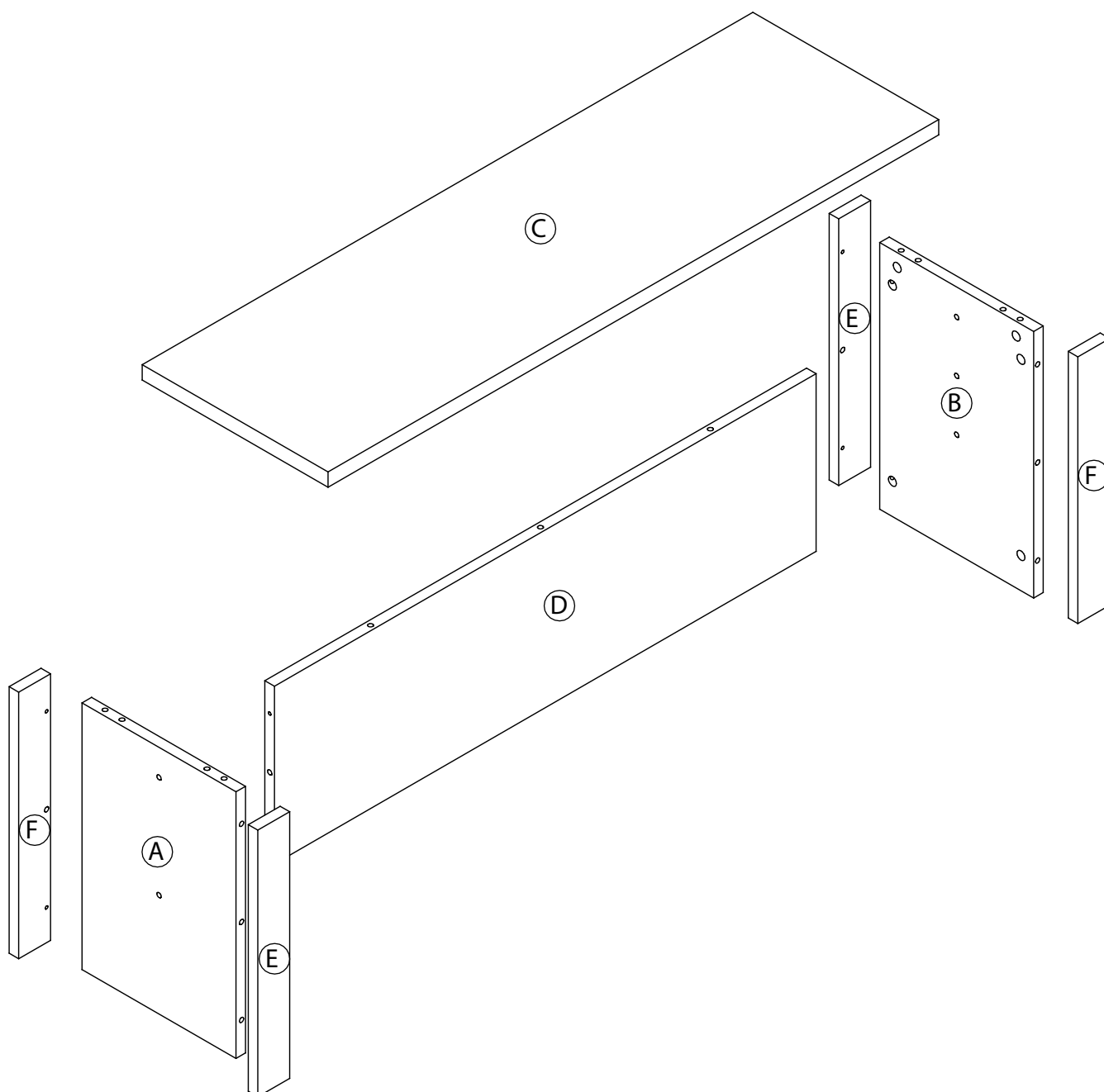
- Never use scourers, abrasives or chemical cleaners.
- To clean wipe with a sponge and soapy water. Do not use solvent based cleaners or detergents as they can bleach or damage the product.

Please check the pack contents before assembling the product. If any components are missing, please contact your retailer. The fittings pack contains small items that should be kept away from small children.

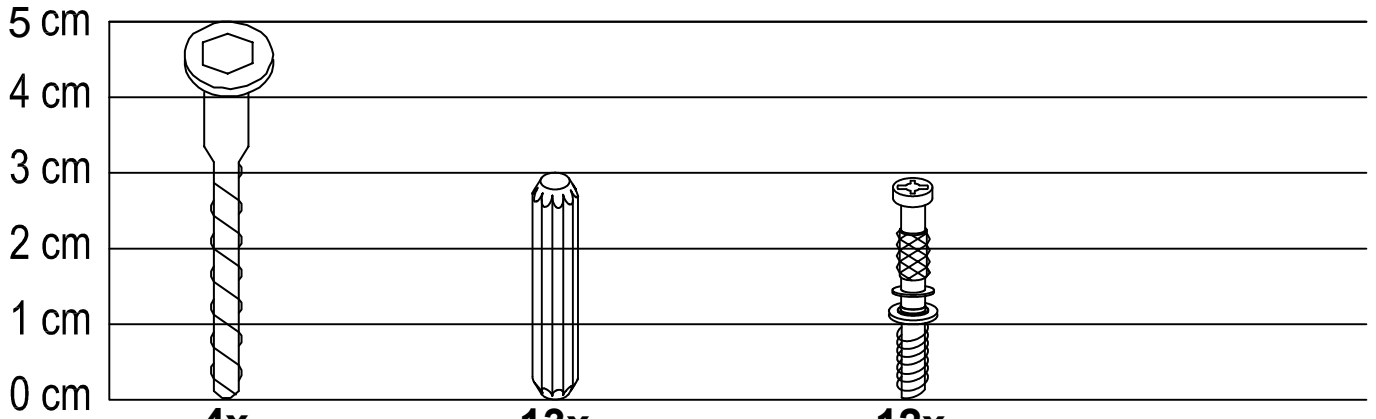
Parts

CODE	PART NAME	QTY
A	Side Panel (18 x 290 x 435mm)	1
B	Side Panel (18 x 290 x 435mm)	1
C	Top Panel (25 x 350 x 850mm)	1

CODE	PART NAME	QTY
D	Center Panel (18 x 290 x 720mm)	1
E	Front Panel - (L) (18 x 60 x 435mm)	2
F	Front Panel - (R) (18 x 60 x 435mm)	2



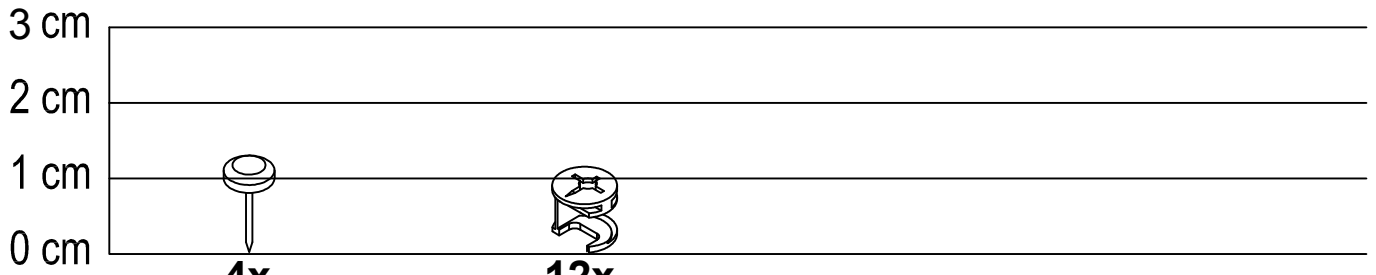
Fixings (to scale)



4x
D6.3 x 50mm
a
Unitar Screw

13x
D8 x 30mm
b
Wooden Dowel


12x
M5 x 29mm
c
Minifix Bolt



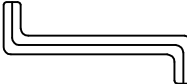
4x
5 x 8 x 13.5mm
d
Nail Leg

12x
D15 x 12mm
e
Minifix Cam

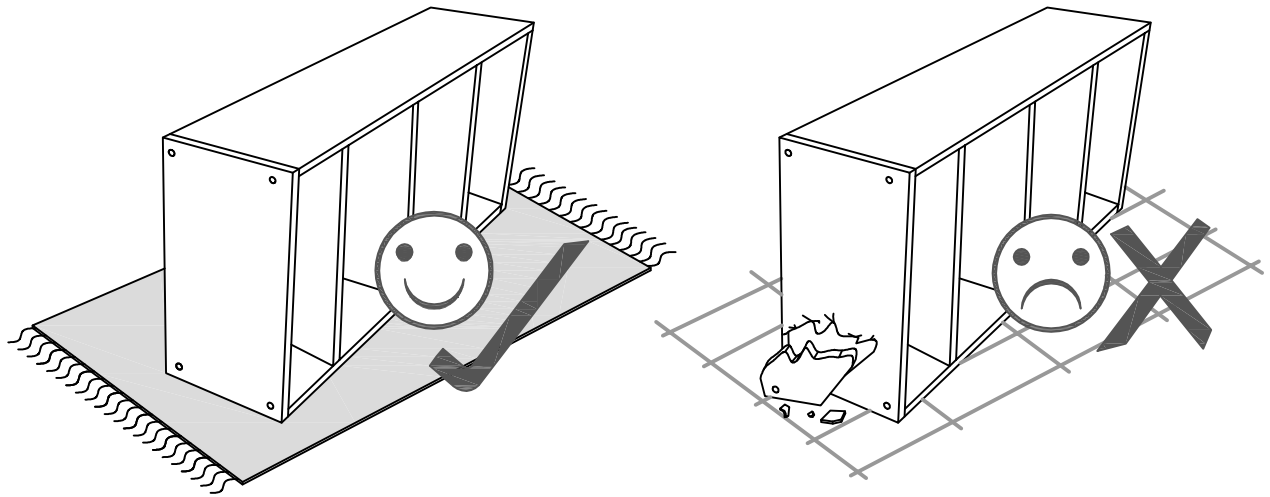
Fixings (not to scale)



16x
(D-19mm)
f
Round Sticker

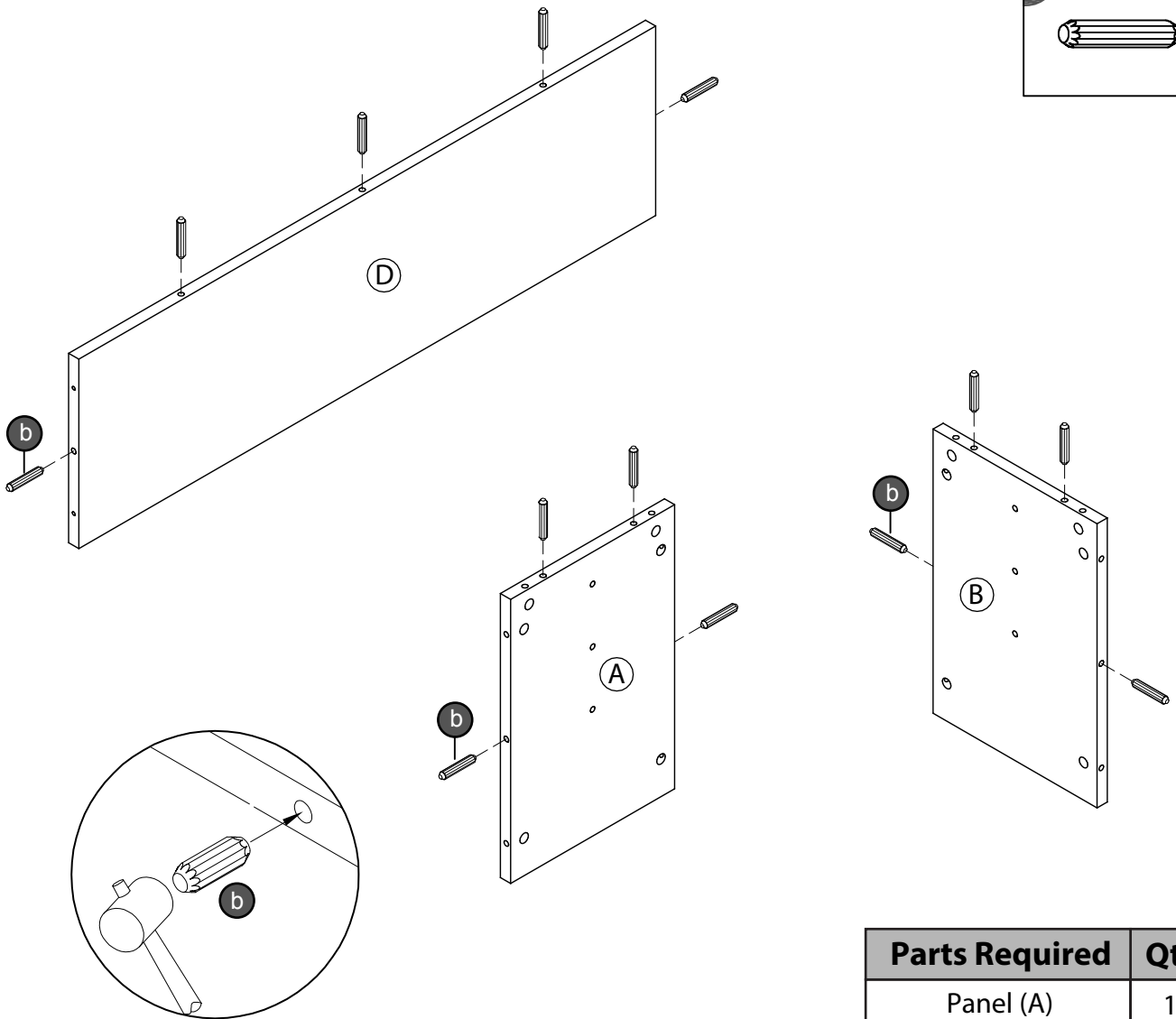
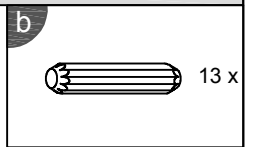


1x
M4
g
Allen Key



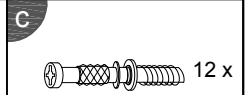
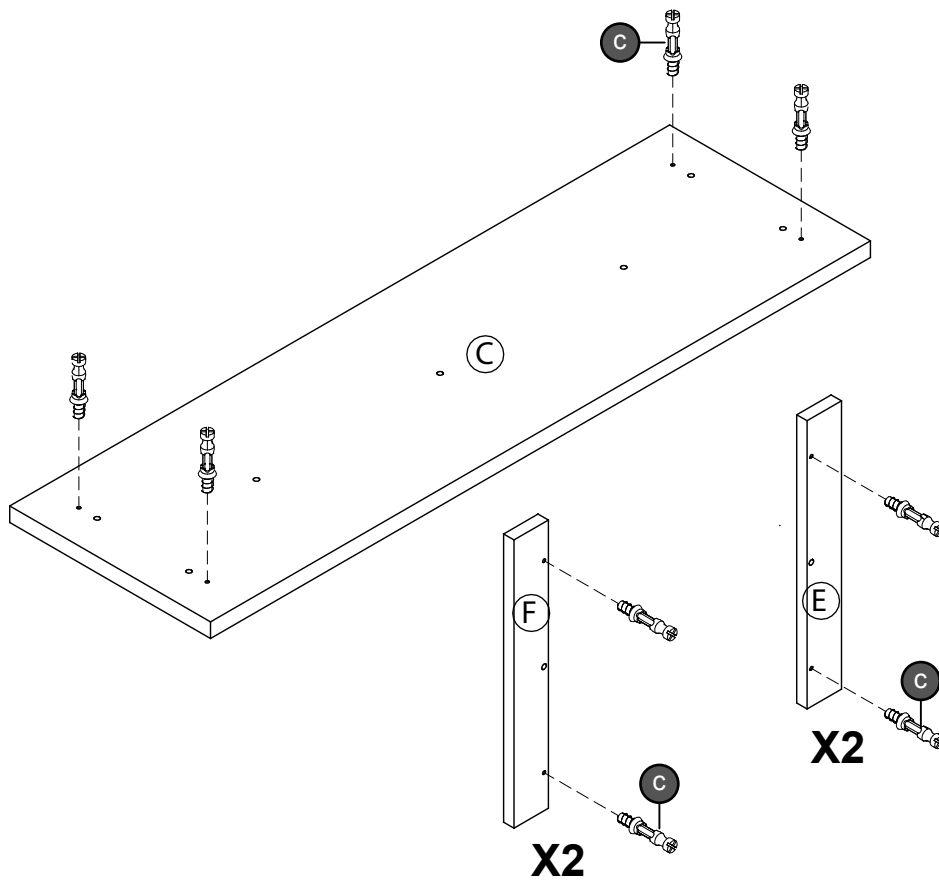
Layout Parts on Soft Surface

STEP 1

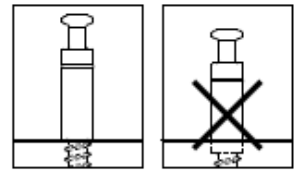


Parts Required	Qty
Panel (A)	1
Panel (B)	1
Panel (D)	1

STEP 2

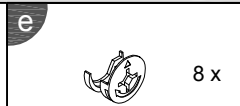
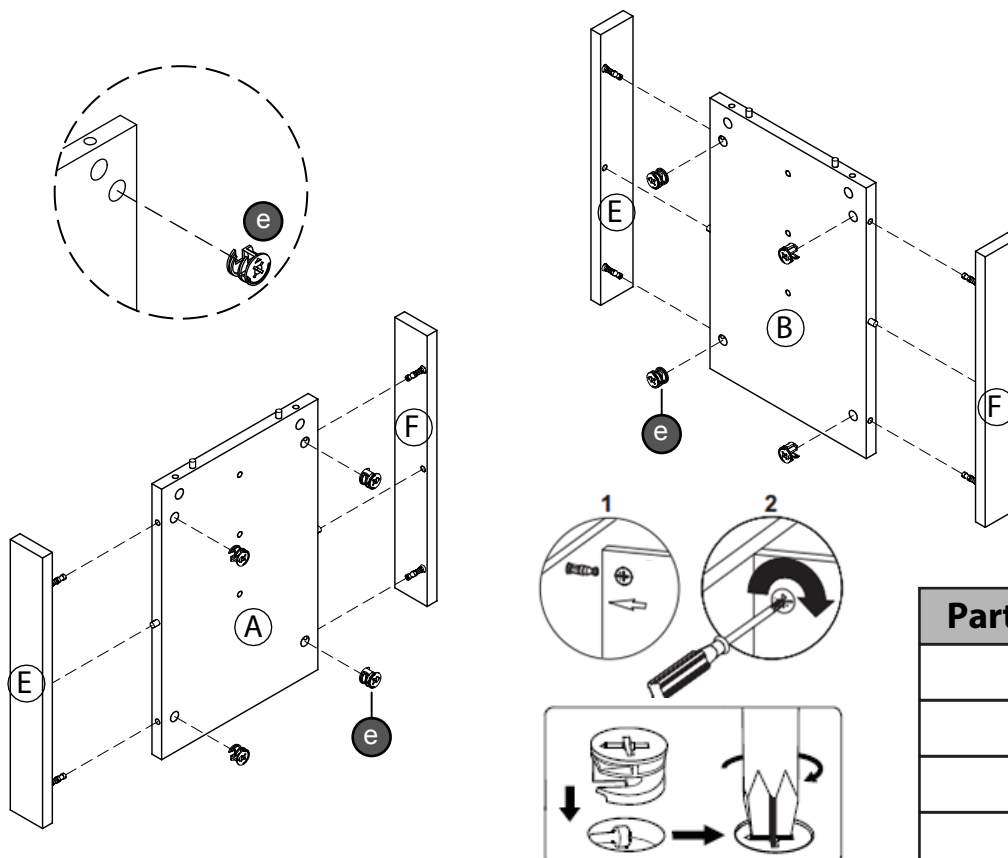


Don't screw too deep



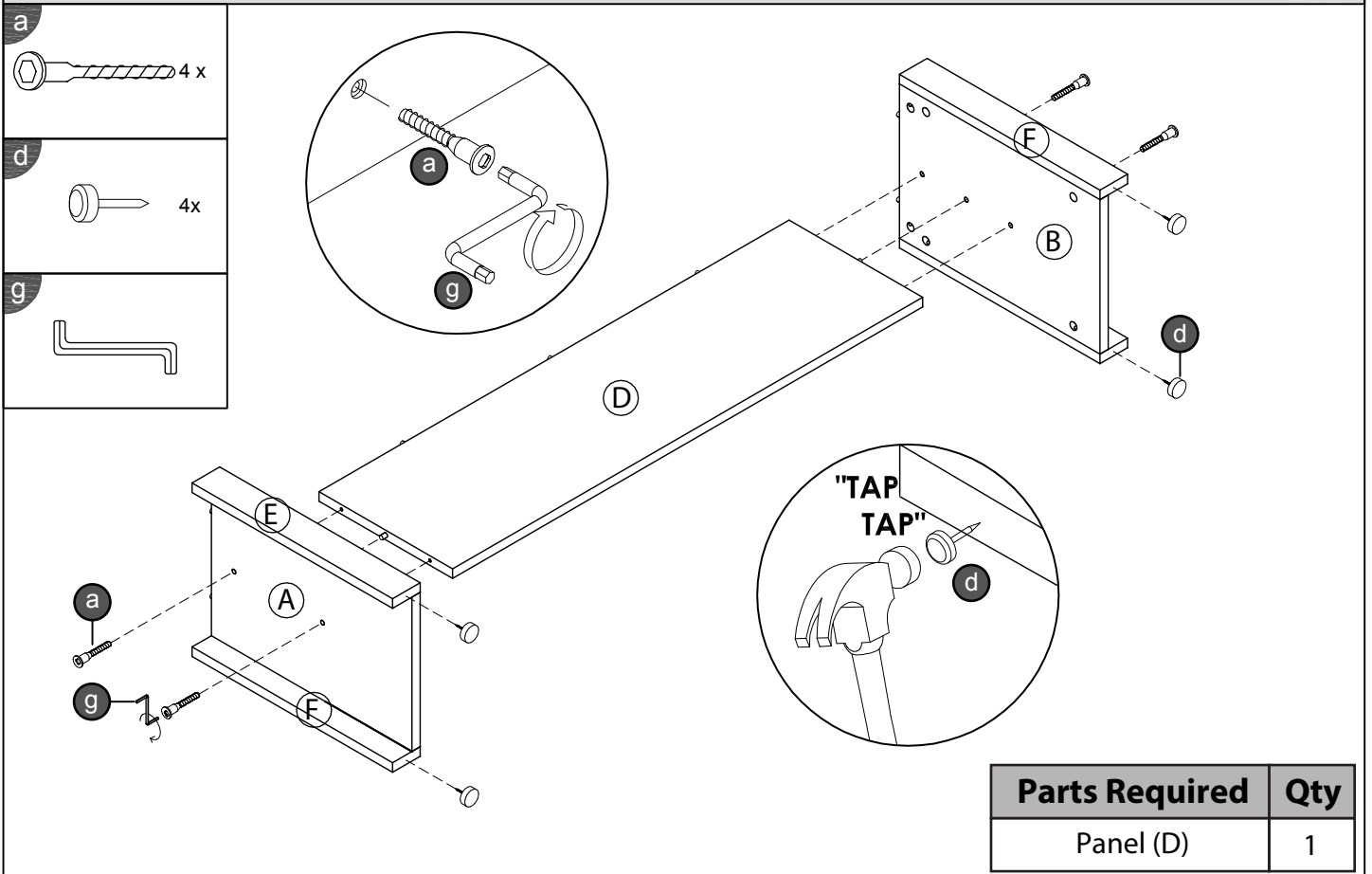
Parts Required	Qty
Panel (C)	1
Panel (E)	2
Panel (F)	2

STEP 3

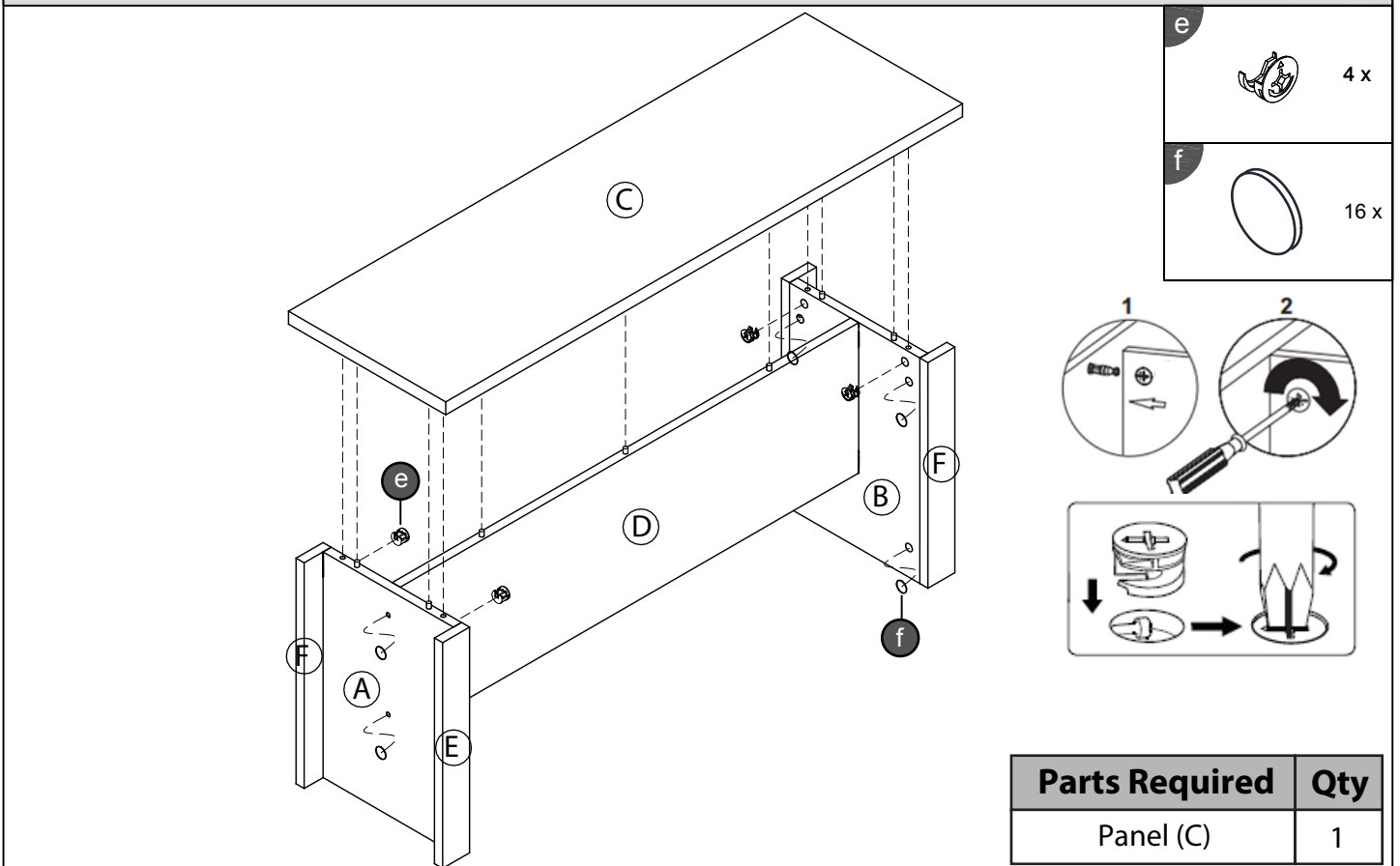


Parts Required	Qty
Panel (A)	1
Panel (B)	1
Panel (E)	2
Panel (F)	2

STEP 4



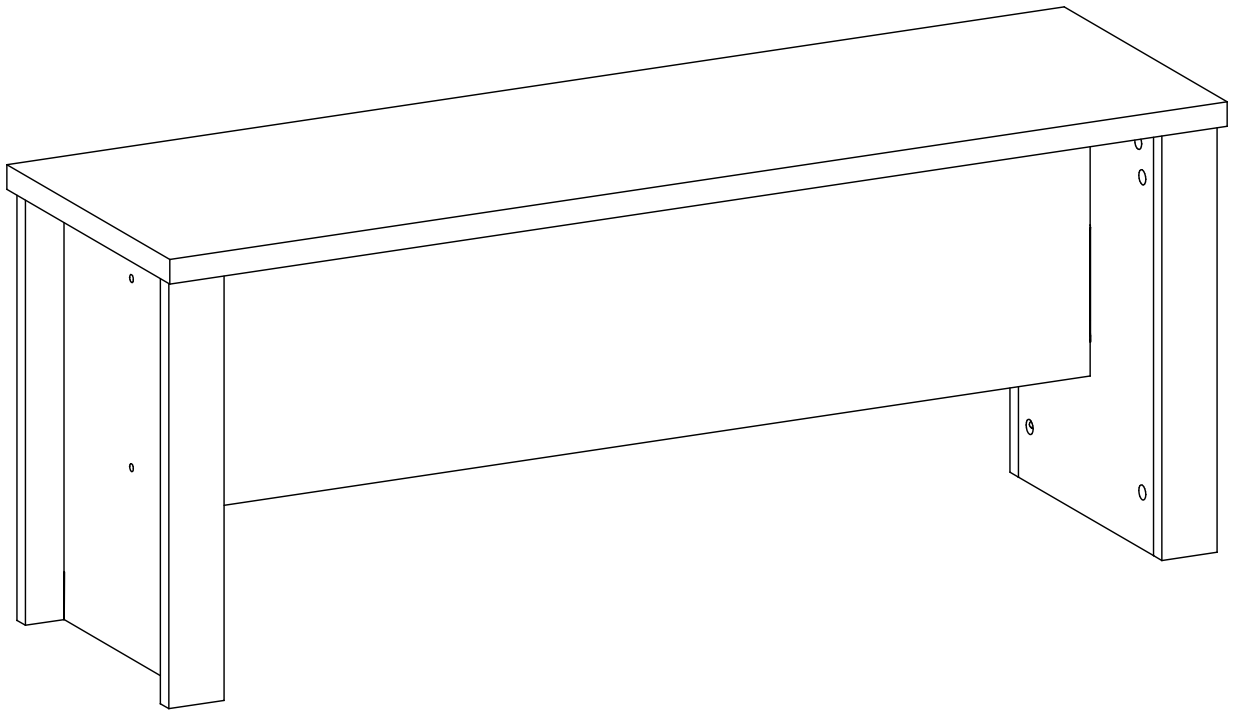
STEP 5



Complete Assembly

Your **LANCASTER BENCH 850mm** is now completely assembled

Periodically check to ensure that the components are in their proper position, free from damage. Also, make sure the connectors are tight and secure.



Keep instructions for future reference

