

# WARMROOM<sup>®</sup>

## magnetic fly screen fixing tapes

*– to be used in conjunction with fly screen mesh (not included)*

**DO IT YOURSELF**



**BUG FREE HOME**

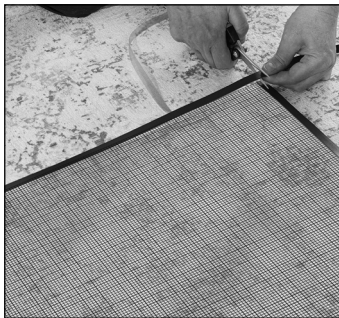


**CUSTOM FIT**



We are delighted you have bought this product, and we are sure you will appreciate its effectiveness for years to come! It is an elegantly simple solution to prevent insects entering through your windows.

- **Prevents insects, flies, wasps and mosquitoes entering your home**
- **Adds ventilation whilst keeping pests out**
- **Helps keep your home clean and more hygienic**
- **Protects your home from direct sunlight, reducing the need for air conditioning**



For detailed instructions on how to fit the fly mesh sheet see overleaf.

**am**  
anchor magnets

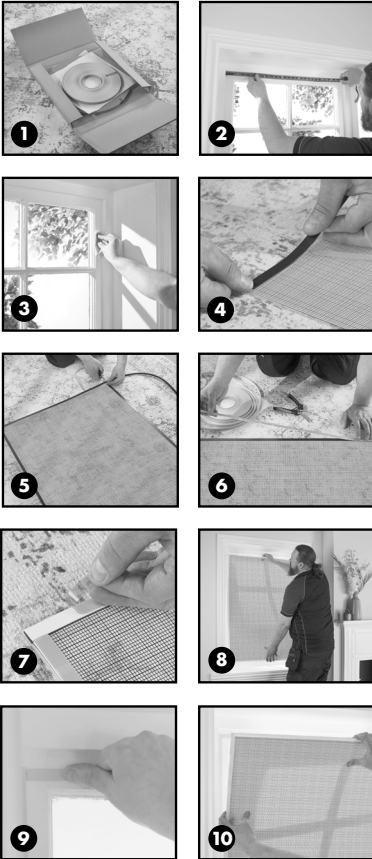
WARMROOM<sup>®</sup> magnetic fly screen fixing tapes are available at  
[anchormagnets.com](http://anchormagnets.com)

# WARMROOM<sup>®</sup>

magnetic fly screen fixing tapes

## Simple Instructions

**Safety Note:** Steel tape has sharp edges, use gloves if required. The steel tape may require strong scissors



- 1** The pack contains magnetic and steel tape with foam adhesive. You will also need a pen, a measuring tape & a pair of strong scissors
- 2** Measure the window, leaving about a 1 cm gap for fitting, to determine the fly mesh sheet size needed. (Note. Fly mesh sheet not included)
- 3** Clean and prepare the surface
- 4** Apply the foam adhesive-backed magnet to the edge of the mesh sheet. Mark and cut the tape to the required length, pressing firmly into position
- 5** Create neat corners and continue around the fly mesh sheet
- 6** Attach steel tape to the magnet
- 7** Peel off the adhesive liner from the steel tape
- 8** Offer fly mesh sheet up to your window, lightly press into place to transfer the steel tape to your window frame, then remove the fly mesh sheet leaving the steel tape attached to the frame
- 9** Steel tape will now be in the perfect position on your frame, firmly press down to secure the steel tape to the frame
- 10** Re-attach the fly mesh fly mesh sheet. Fly mesh sheet can be easily removed for cleaning



Instruction video showing how to fit secondary double-glazing fly mesh sheet – same principles apply to fly mesh.  
To watch full instruction video please scan here

To find out more about WARMROOM<sup>®</sup> please visit  
[www.anchor magnets.com/collections/fly-screen-kits](http://www.anchor magnets.com/collections/fly-screen-kits)



Certificate  
Number 1122

**am**  
anchor magnets

UK ADDRESS: Bankside Works,  
Darnall Road, Sheffield, UK, S9 5AH

EU ADDRESS: c/o Stockmann Steuerberatungsgesellschaft mbH  
Industriestrasse 10, 61118 Bad Vilbel

T: +44 (0) 114 244 1171 E: [sales@anchormagnets.com](mailto:sales@anchormagnets.com) W: [www.anchor magnets.com](http://www.anchor magnets.com)