



# D400 Ductile Iron Manhole Covers

**Product Data Sheets**

Installation guidance and assistance is available  
For further information, please call 0121 552 8887

[info@polydraincivils.com](mailto:info@polydraincivils.com) | [www.polydraincivils.com](http://www.polydraincivils.com)

**POLYDRAIN.**  
Advanced Water Management Solutions

# 450mm Square D400 Ductile Iron Cover & Frame

## Product Data Sheet

Product Code - 450450D400

Material Grade/s | **Spheroid Graphite Iron Grade**

**EN-GJS-500-7 to BS EN 1563:2011**

Paint Coating | **Temporary Bitumen-based to BS 3416:1991**

Clear-Opening Dimensions [mm] | **450 x 450**

Over Base Dimensions [mm] | **590 x 590**

Frame Depth Dimensions [mm] | **100/150**

Depth of Cover in Frame [mm] | **60**

Weight | **44kg [set]**

Frame Pressure Bearing Area [N/mm<sup>2</sup>] | **3.23**

Polished Skid-Resistance Value [PSRV] | **45+**

Load Rating Classification | **D400 [40 tonnes]**

Certification | **BSI Kitemark Certified to BS EN 124-2:2015**

Key Hole | **Integral Lifting Key Hole**

Cover | **Non - Rock 3 Point Suspension Cover**



Installation guidance and assistance is available  
For further information, please call 0121 552 8887

[info@polydraincivils.com](mailto:info@polydraincivils.com) | [www.polydraincivils.com](http://www.polydraincivils.com)



**POLYDRAIN.**  
Advanced Water Management Solutions

# 600mm x 450mm D400 Ductile Iron Cover & Frame

## Product Data Sheet

Product Code - 600450D400

Material Grade/s | **Spheroid Graphite Iron Grade**

**EN-GJS-500-7 to BS EN 1563:2011**

Paint Coating | **Temporary Bitumen-based to BS 3416:1991**

Clear-Opening Dimensions [mm] | **600 x 450**

Over Base Dimensions [mm] | **740 x 590**

Frame Depth Dimensions [mm] | **100/150**

Depth of Cover in Frame [mm] | **60**

Weight | **54kg [set]**

Frame Pressure Bearing Area [ $N/mm^2$ ] | **2.84**

Polished Skid-Resistance Value [PSRV] | **45+**

Load Rating Classification | **D400 [40 tonnes]**

Certification | **BSI Kitemark Certified to BS EN 124-2:2015**

Key Hole | **Integral Lifting Key Hole**

Cover | **Non - Rock 3 Point Suspension Cover**



Installation guidance and assistance is available  
For further information, please call 0121 552 8887

[info@polydraincivils.com](mailto:info@polydraincivils.com) | [www.polydraincivils.com](http://www.polydraincivils.com)



**POLYDRAIN.**  
Advanced Water Management Solutions

# 600mm Square D400 Ductile Iron Cover & Frame

## Product Data Sheet

Product Code - 600600D400

Material Grade/s | **Spheroid Graphite Iron Grade**

**EN-GJS-500-7 to BS EN 1563:2011**

Paint Coating | **Temporary Bitumen-based to BS 3416:1991**

Clear-Opening Dimensions [mm] | **600 x 600**

Over Base Dimensions [mm] | **740 x 740**

Frame Depth Dimensions [mm] | **100/150**

Depth of Cover in Frame [mm] | **60**

Weight | **64kg [set]**

Frame Pressure Bearing Area [ $N/mm^2$ ] | **2.6**

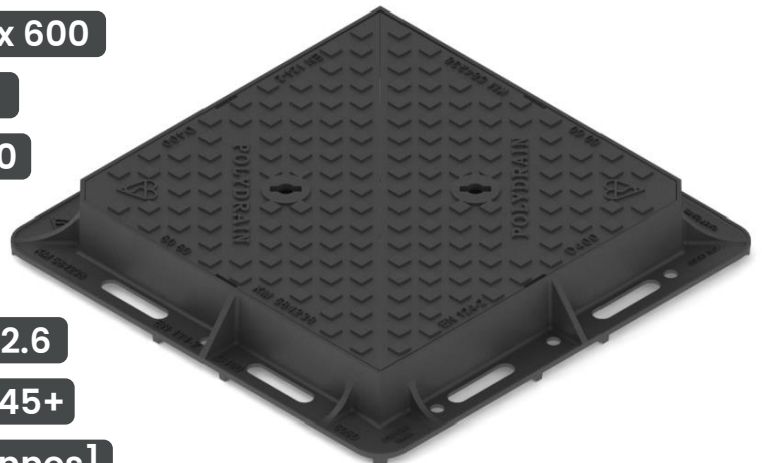
Polished Skid-Resistance Value [PSRV] | **45+**

Load Rating Classification | **D400 [40 tonnes]**

Certification | **BSI Kitemark Certified to BS EN 124-2:2015**

Key Hole | **Integral Lifting Key Hole**

Cover | **Non - Rock 3 Point Suspension Cover**



Installation guidance and assistance is available  
For further information, please call 0121 552 8887

[info@polydraincivils.com](mailto:info@polydraincivils.com) | [www.polydraincivils.com](http://www.polydraincivils.com)



**POLYDRAIN.**  
Advanced Water Management Solutions



***POLYDRAIN.***

Dudley Road East, Tividale, Oldbury, B69 3HJ

Installation guidance and assistance is available  
For further information, please call 0121 552 8887

[info@polydraincivils.com](mailto:info@polydraincivils.com) | [www.polydraincivils.com](http://www.polydraincivils.com)

Advanced Water  
Management Solutions