



Threshold Drain

Product Data Sheet

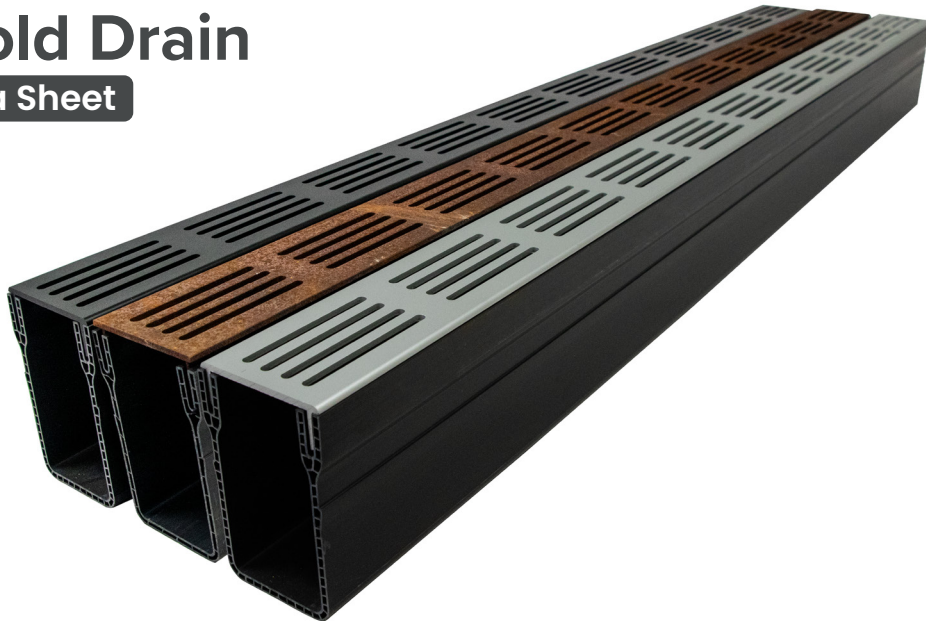
Installation guidance and assistance is available
For further information, please call 0121 552 8887

info@polydraincivils.com | www.polydraincivils.com

POLYDRAIN.
Advanced Water Management Solutions

Threshold Drain

Product Data Sheet



Product Code	Material	L x W x D [mm]	Weight [kg]
THD1000BAG	Black Aluminium Grating	1000 x 65 x 100	1.75
THD1000CSG	Corten Steel Grating		2.8
THD1000SAG	Silver Aluminium Grating		2.245

Key Benefits

- Available in 3 different gratings
- Capable of handling significant water levels effectively
- Reduces large puddles of water gathered outside the property
- Heelguard grates as standard

Compliance

- Loading Capabilities 15KN - Stabilised Sand
- Loading Capabilities 25KN - Concrete

✓ Tested to BS EN 1433 A15 & conforms to building regulations

Product Overview

- Connecting clip, body outlet, end cap, end cap outlet
- PVC corner & T-Section
- Black, corten steel & silver colour options

Application

- Exterior doors
- Outdoor seating areas
- Walkways



Installation guidance and assistance is available
For further information, please call 0121 552 8887


info@polydraincivils.com | www.polydraincivils.com



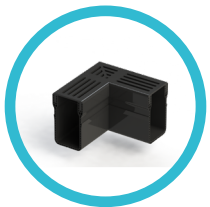
POLYDRAIN.
Advanced Water Management Solutions

Accessories

Threshold Drain

Description	Product Code	W x L [mm]	Weight [kg]
Connecting Clip 	THDCC	100 x 100	0.109
Body Outlet 	THDBO75 [Outlet 75mm]	100 x 73	0.096
End Cap 	THDEC	63 x 100	0.030
End Cap Outlet 	THDEO50 [Outlet 50mm]	63 x 100	0.030

PVC Corner & T-Section



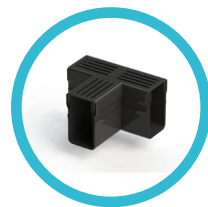
THDCBAG



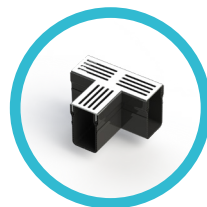
THDCSAG



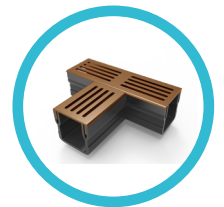
THDCCSG



THDTBAG



THDTSAG



THDTCSG



Installation guidance and assistance is available
For further information, please call 0121 552 8887

info@polydraincivils.com | www.polydraincivils.com



POLYDRAIN.
Advanced Water Management Solutions



POLYDRAIN.

Dudley Road East, Tividale, Oldbury, B69 3HJ

Installation guidance and assistance is available
For further information, please call 0121 552 8887

info@polydraincivils.com | www.polydraincivils.com

Advanced Water
Management Solutions