



Hommix Vega 3-Way Tap

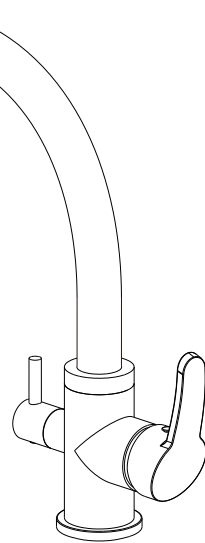


Installation Instructions

Hommix Vega Three Way Kitchen Tap

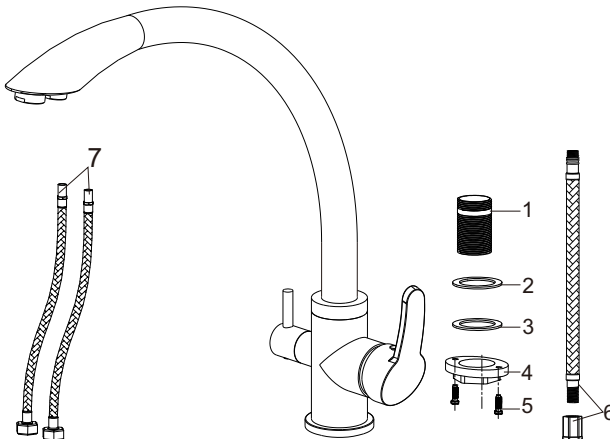
Specifications

1. Ceramic valve cartridge
2. Flow rate: 2.2G/M base on 0.5Mpa
3. 1/4" Connector for filtered water tube
4. 2 x G-1/2" Flexible Hoses



Installation Tools

- Adjustable Spanner / Monkey Wrench
- PTFE tape
- 2.5mm Allen key

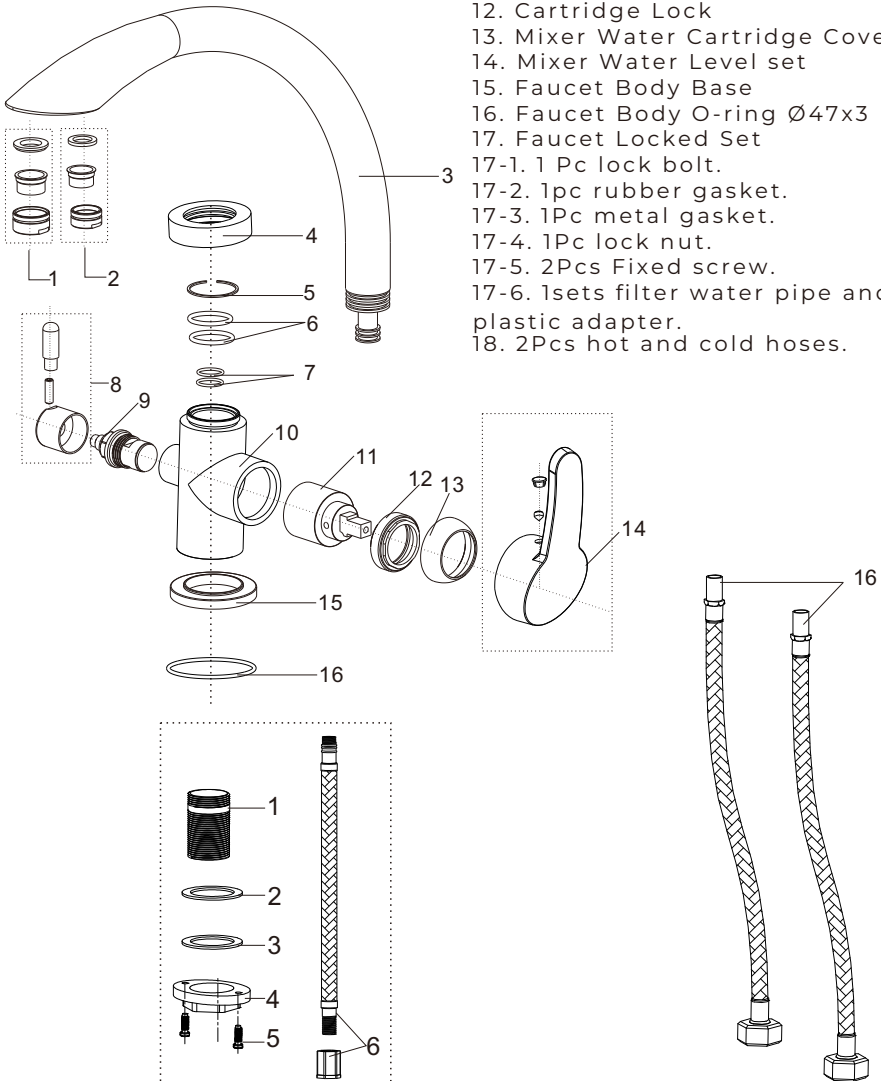


Accessories

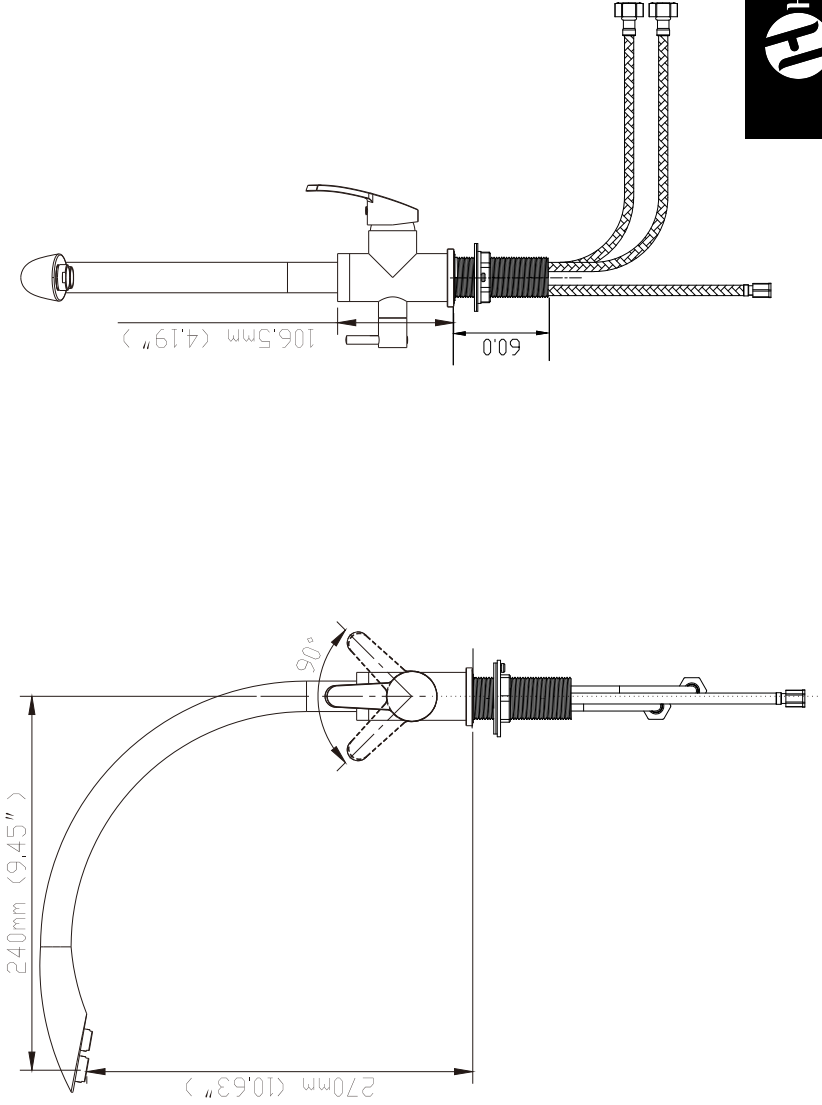
1. 1 Pc lock bolt
2. 1 pc rubber gasket
3. 1 Pc metal gasket
4. 1 Pc lock nut
5. 2 Pcs of fixing screws
6. 1 set filtered water pipe and a plastic adapter (1/4" push fit)
7. 2 Pcs hot and cold 600mm hoses

Parts

1. Mixer Water Aerator
2. Filter Water Aerator
3. Spout Assembly
4. Spout Assembly Lock Cover
5. Lock Ring
6. Ø28x2.5 O-ring x 2
7. Ø14x2.3 O-ring x 2
8. Filter Water Level Set
9. Filter Water Cartridge
10. Faucet Body
11. Mixer Water Cartridge
12. Cartridge Lock
13. Mixer Water Cartridge Cover
14. Mixer Water Level set
15. Faucet Body Base
16. Faucet Body O-ring Ø47x3
17. Faucet Locked Set
 - 17-1. 1 Pc lock bolt.
 - 17-2. 1pc rubber gasket.
 - 17-3. 1Pc metal gasket.
 - 17-4. 1Pc lock nut.
 - 17-5. 2Pcs Fixed screw.
 - 17-6. 1sets filter water pipe and a plastic adapter.
18. 2Pcs hot and cold hoses.

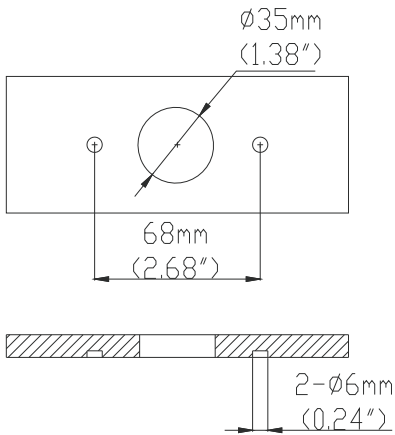


Profile Drawing



Important Note 1

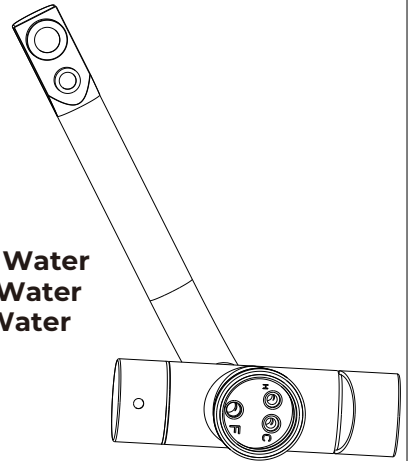
You do not need to drill any holes, the illustration below demonstrate measurements of the lock nut screws



Important Note 2

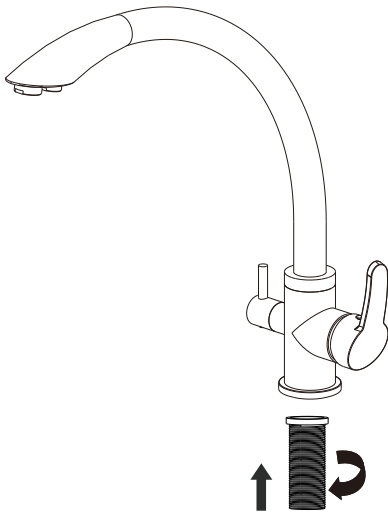
Please ensure the tap hoses are attached to the correct positions as marked below.

F- Filter Water
C- Cold Water
H- Hot Water



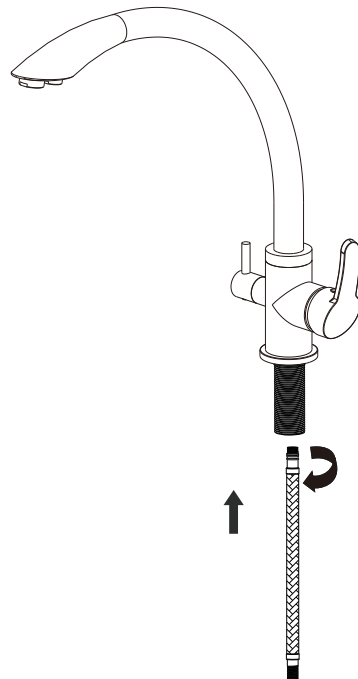
Step: 1

Attach the lock bolt to the tap



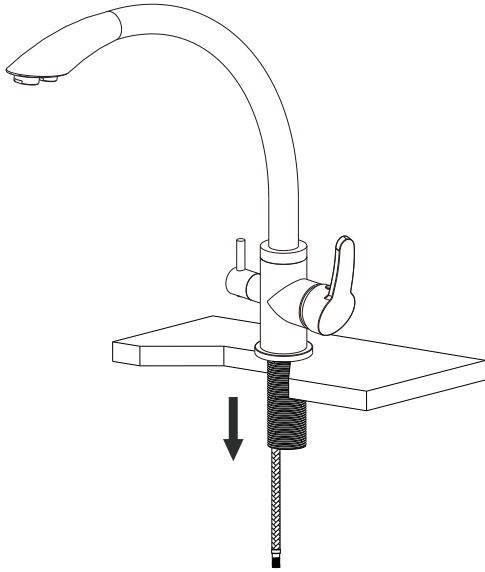
Step: 2

Attach the filter water hose



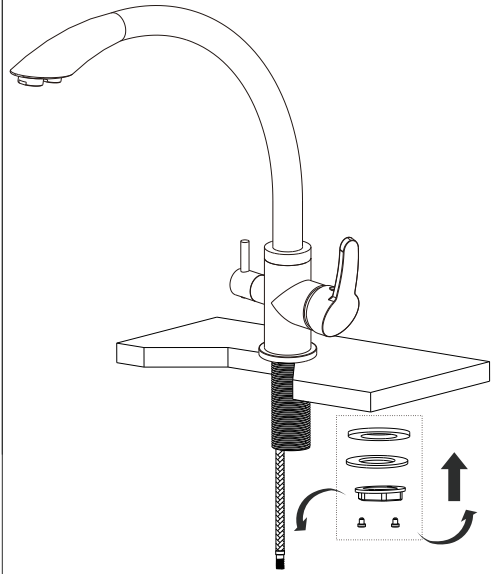
Step: 3

Attach the Hot and Cold hoses

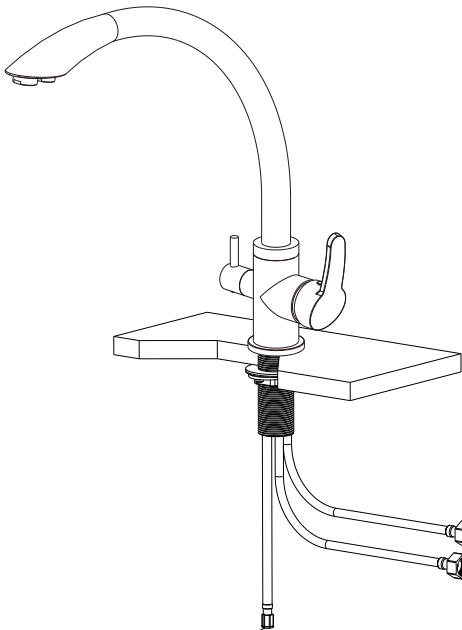


Step: 4

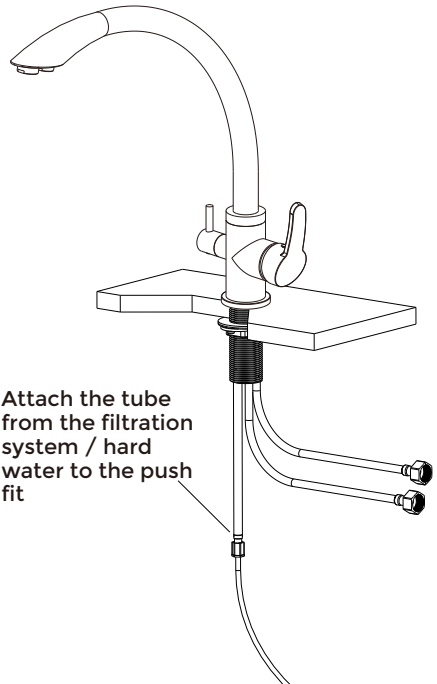
Insert the tap with the tubes attached through the hole and attach the rubber gasket, metal gasket and lock nut to the lock bolt



Step: 5



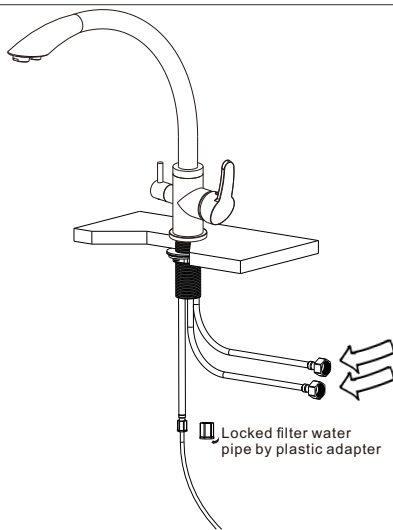
Attach the fitting to the pipe if it's not already attached



Attach the tube from the filtration system / hard water to the push fit

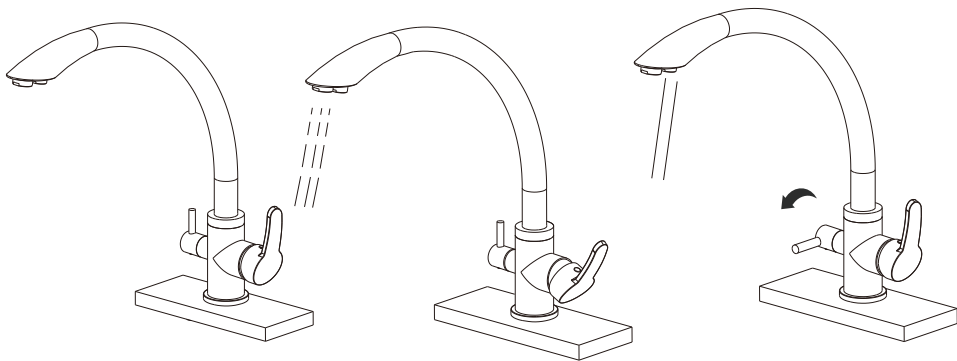
Step: 7

Connect the Hot & Cold Hoses to the supply water



Step: 8

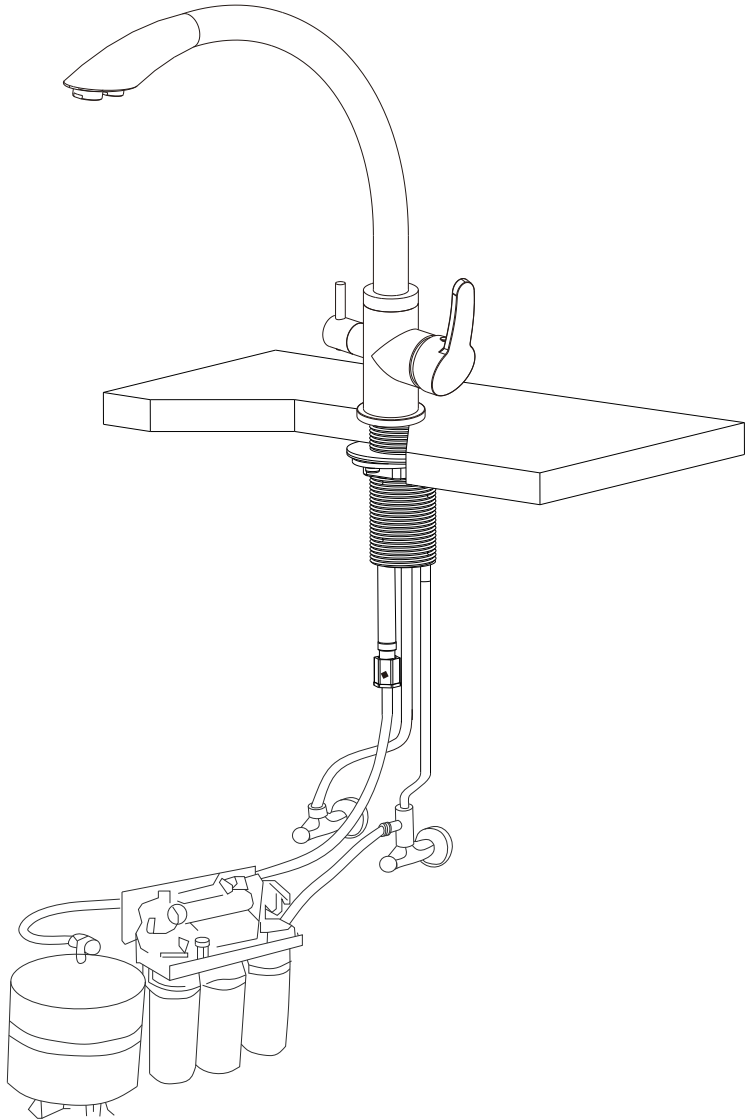
Test the your Hommix Vega to ensure it is dispensing water



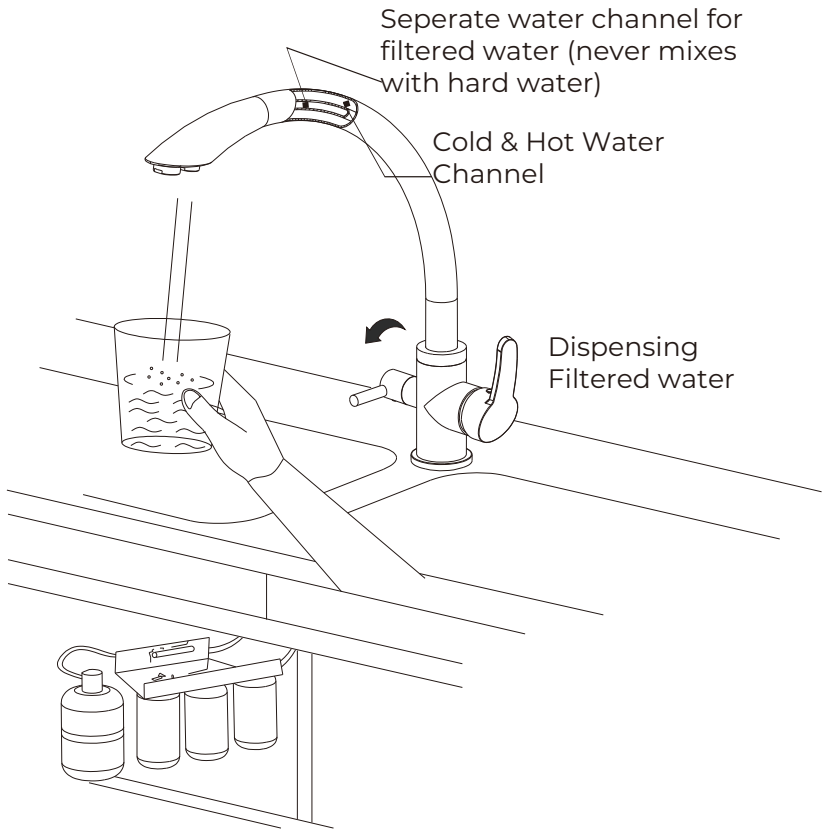
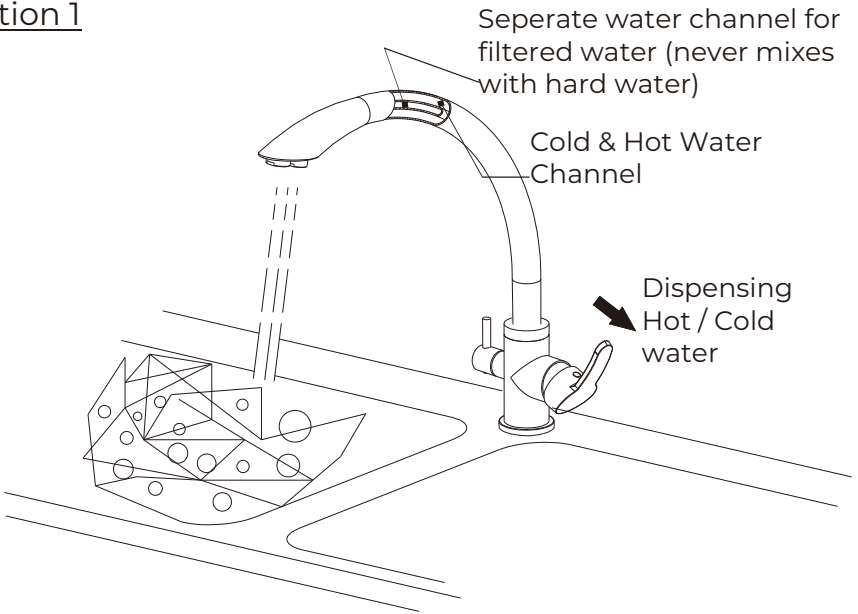
Important Note 3

Please ensure any sand, silt, rubbles or anything that may block the valve cartridge and aerator is removed and cleaned before fixing the tap. During construction, the water pipes often end up with these, please ensure it is cleaned before connecting the hoses to the hot and cold.

Illustration of a Reverse Osmosis System connected to the Hommix Vega 3-Way Tap



Information 1



Taking care of your tap

Your Hommix Verona 3-Way Tap requires minimal care and maintenance but here are a few tips:

DON'Ts

DON'T use cleaning products, chemicals or any other types of substances to clean the tap

DON'T use organic solvents or acidic cleaners, lime-scale removers, household vinegar or cleaners containing acetic acid for cleaning

DON'T use any sort of brushes or abrasive sponges and scrubs

DOs

DO dry the tap after washing up with a dry soft cloth (we advise this for cleaning your sink too)

DO use a soft damp cloth followed by a dry soft cloth to clean if the tap requires cleaning

That's all! We did say minimal care and maintenance. If you have any questions or need help with installation, please do not hesitate to contact us.

Live Chat - <https://www.hommix.co.uk>

Call us - 0330 113 9292

Email us - info@hommix.co.uk

