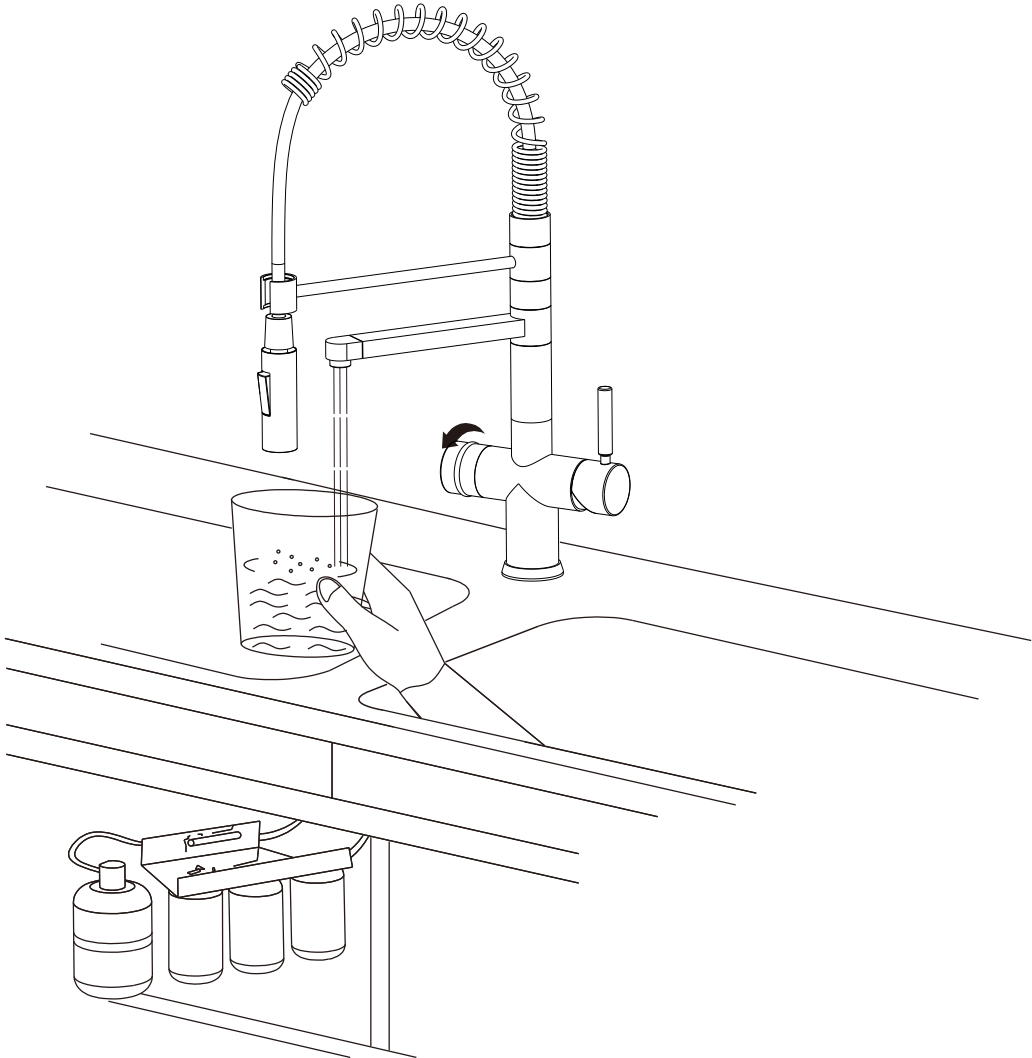




Hommix Savona 3-Way Tap



Installation Instructions

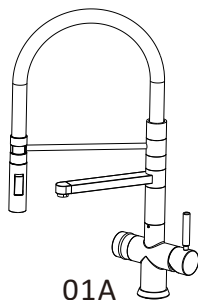
Hommix Atrani Three Way Kitchen Tap

Specifications

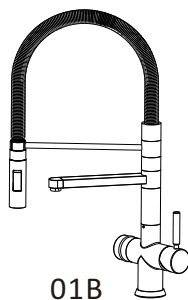
1. Ceramic valve cartridge
2. Flow rate: 2.2G/M base on 0.5Mpa
3. 1/4" Connector for filtered water tube
4. 2 x G-1/2" Flexible Hoses

Installation Tools

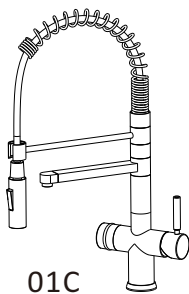
- Adjustable Spanner / Monkey Wrench
- PTFE tape
- 2.5mm Allen key



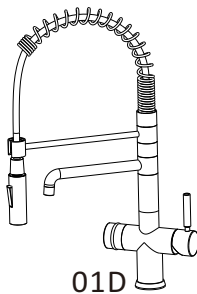
01A



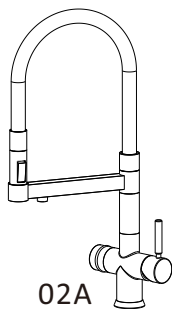
01B



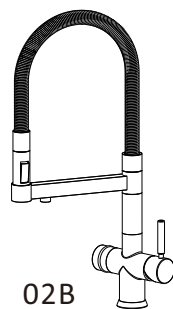
01C



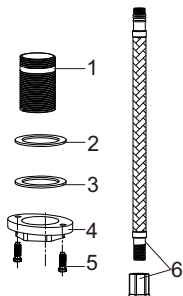
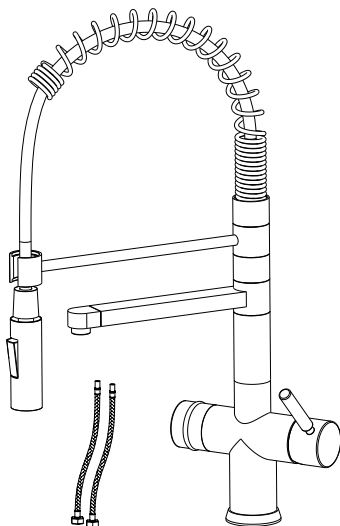
01D



02A



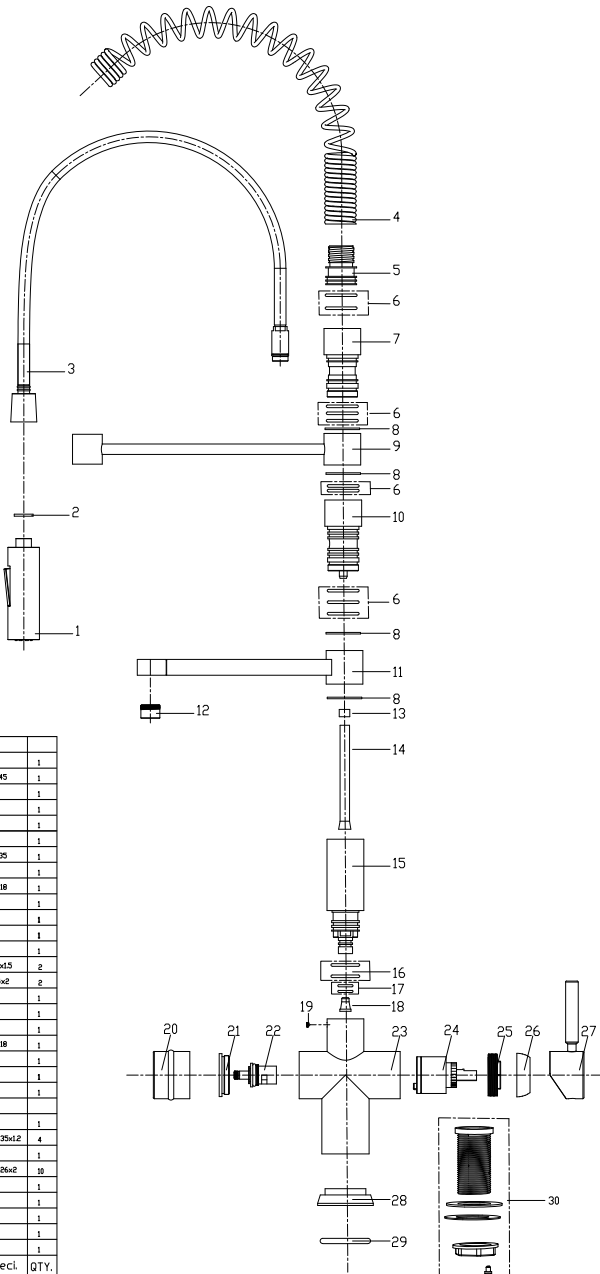
02B



Accessories

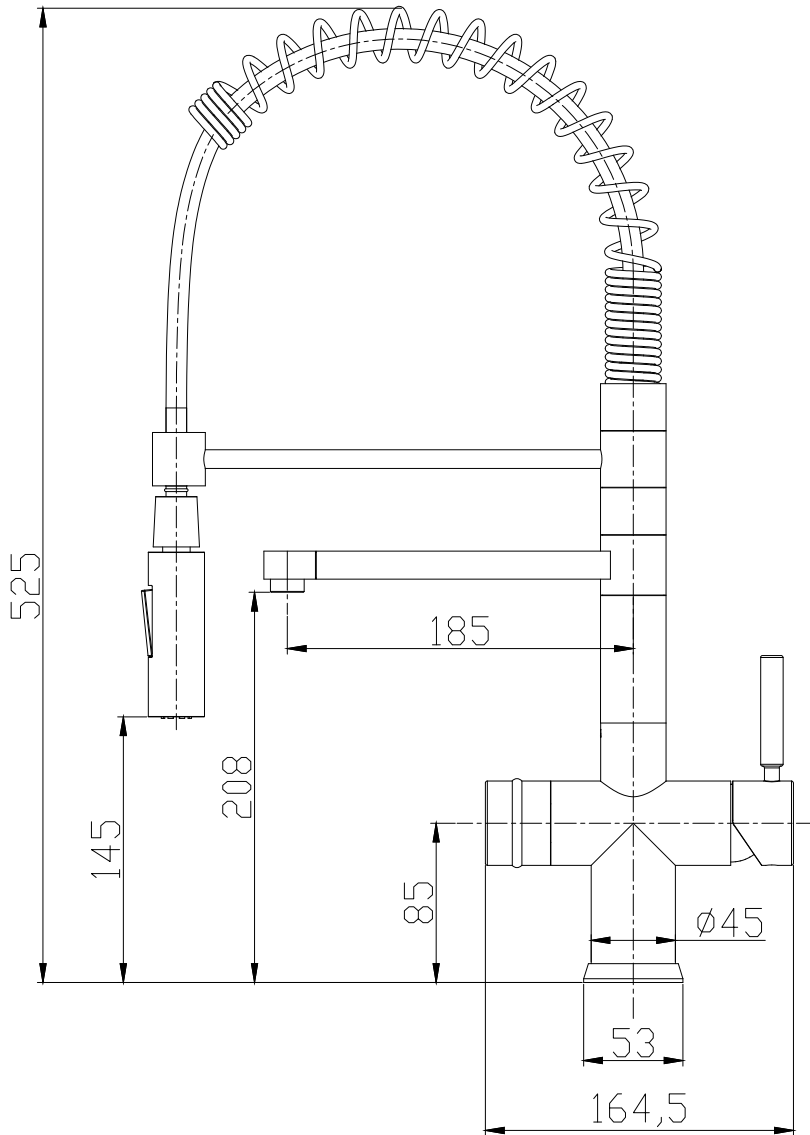
1. 1 Pc lock bolt
2. 1 pc rubber gasket
3. 1 Pc metal gasket
4. 1 Pc lock nut
5. 2 Pcs of fixing screws
6. 1 set filtered water pipe and a plastic adapter (1/4" push fit)
7. 2 Pcs hot and cold 600mm hoses

Replacement Parts



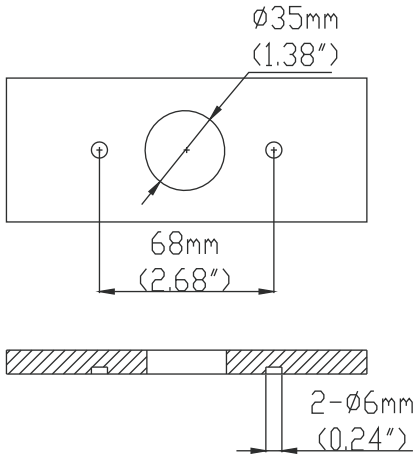
NO.	Description	Material	Specif.	QTY.
30	Locking set			1
29	Base o-ring	Rubber	Itu45	1
28	Base	Qualified Brass		1
27	Moer water handle	Qualified alloy		1
26	Moer cartridge cover	Plastic with chrome		1
25	Moer cartridge locking			1
24	Moer water cartridge	Ceramic/Plastic Holder	Itu30	1
23	Faucet Body	Qualified brass		1
22	Filter water cartridge	Ceramic +brass holder	Itu18	1
21	Filter water valve locking	Qualified brass		1
20	Filter water handle	Qualified Alloy		1
19	Locking Nut	304 stainless steel	M3	1
18	Filterwater pipe block	Qualified brass		1
17	Axis of rotation o-ring	Rubber	Itu14x15	2
16	Axis of rotation o-ring	Rubber	Itu24x2	2
15	Faucet body connector	Qualified brass		1
14	Inside filter water pipe	Qualified food level silicon pipe		1
13	Filter water pipe lock ring	304 stainless steel		1
12	Arrestor set		Itu18	1
11	Spout Set	Qualified brass		1
10	Spout set Axis Parts	Qualified brass		1
8	Spray shower holder	304 stainless steel		1
9	Shower spray frame	304 stainless steel		1
7	Frame Axis Part	Qualified brass	Itu35x12	4
6	Aisl. D-Ring	Rubber	Itu26x2	10
5	Flexible Spring holder	qualified brass		1
4	Flexible Spring	304 stainless steel		1
3	Outlet hose			1
2	Spray shower washer	Rubber		1
1	Spray shower			1

Profile Drawing



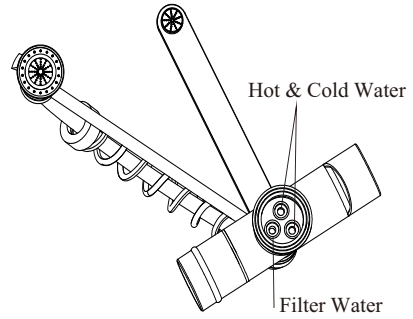
Important Note 1

You do not need to drill any holes, the illustration below demonstrate measurements of the lock nut screws



Important Note 2

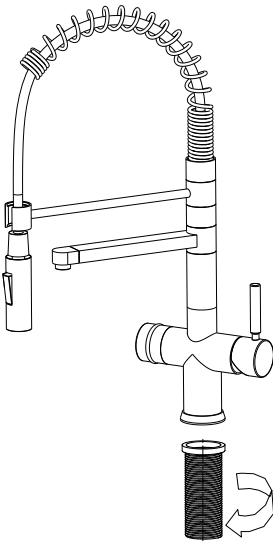
Please ensure the tap hoses are attached to the correct positions as marked below.



F - Filtered Water
C - Cold Water
H - Hot Water

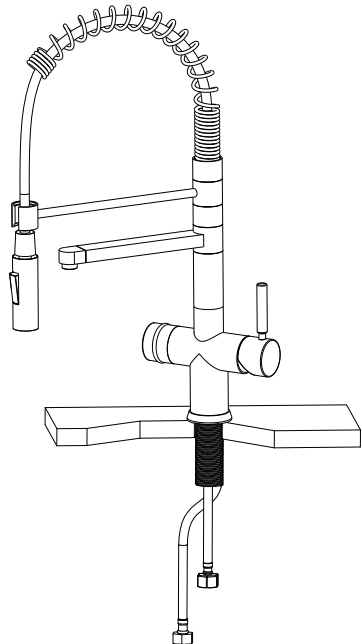
Step: 1

Attach the lock bolt to the tap



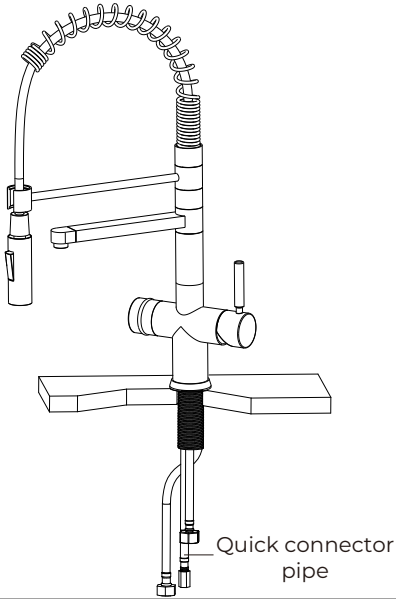
Step: 2

Attach the Hot and Cold hoses



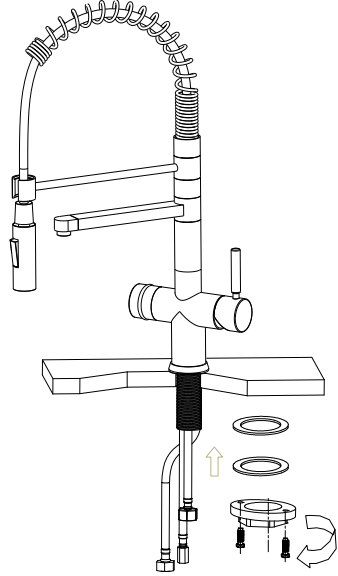
Step: 3

Attach the filter water hose

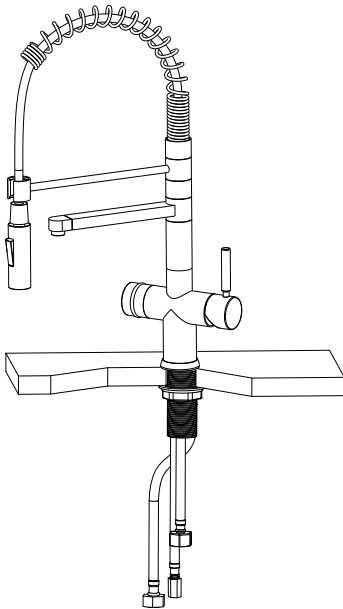


Step: 4

Insert the tap with the tubes attached through the hole and attach the rubber gasket, metal gasket and lock nut to the lock bolt



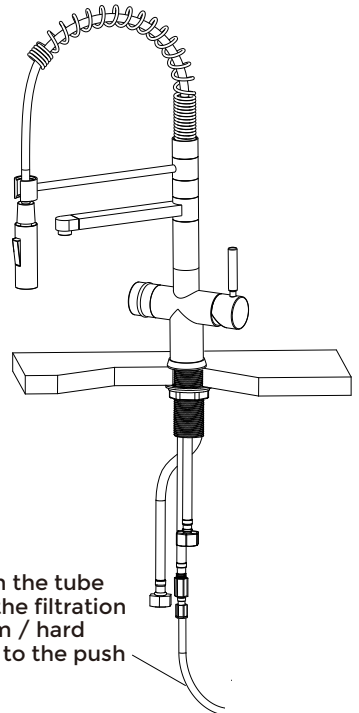
Step: 5



Attach the fitting to the pipe if it's not already attached

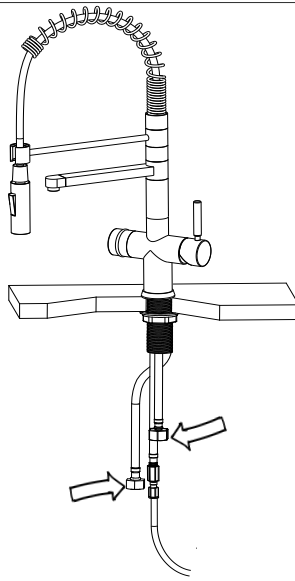
Step: 6

Attach the tube from the filtration system / hard water to the push fit



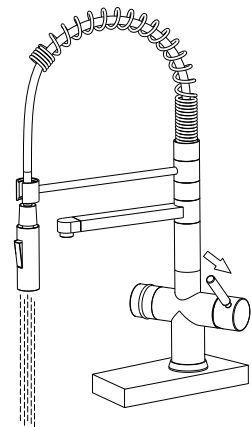
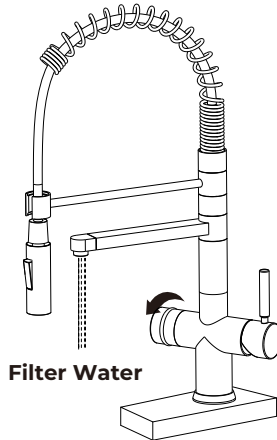
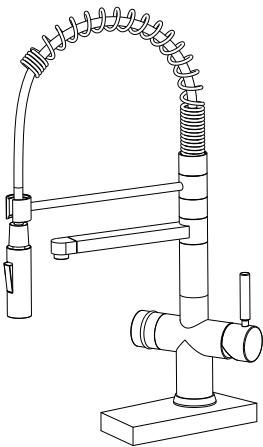
Step: 7

Connect the Hot & Cold Hoses to the supply water



Step: 8

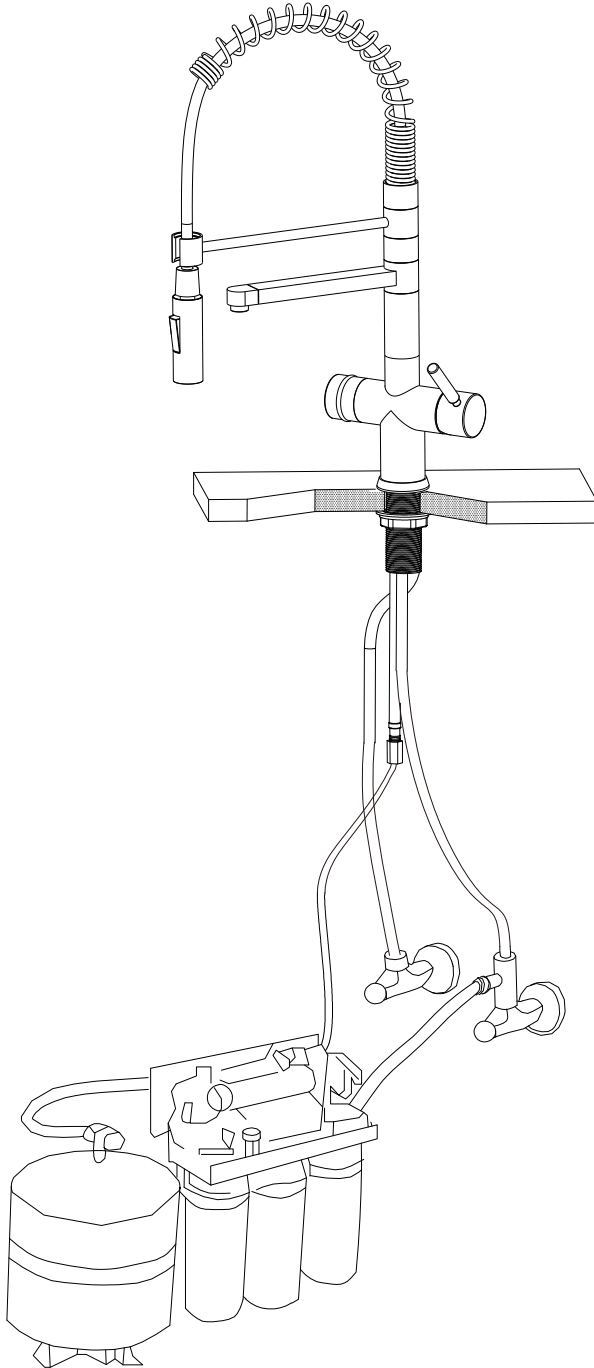
Test the your Hommix Atrani to ensure it is dispensing water



Important Note 3

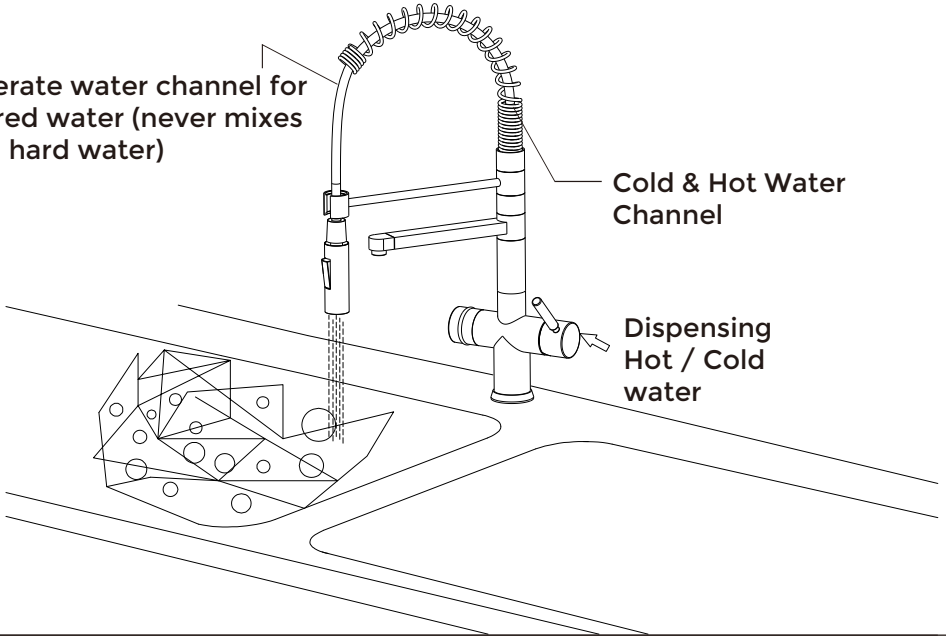
Please ensure any sand, silt, rubbles or anything that may block the valve cartridge and aerator is removed and cleaned before fixing the tap. During construction, the water pipes often end up with these, please ensure it is cleaned before connecting the hoses to the hot and cold.

Illustration of a Reverse Osmosis System connected to the Hommix Atrani 3-Way Tap



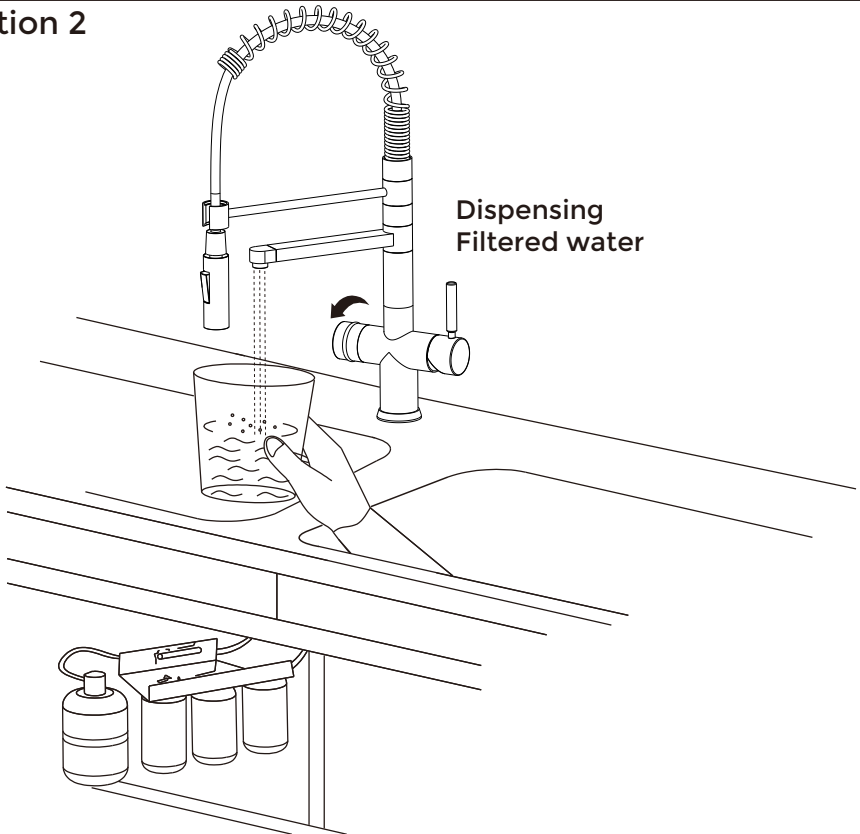
Information 1

Seperate water channel for filtered water (never mixes with hard water)



Information 2

Dispensing Filtered water



Taking care of your tap

Your Hommix Verona 3-Way Tap requires minimal care and maintenance but here are a few tips:

DON'Ts

DON'T use cleaning products, chemicals or any other types of substances to clean the tap

DON'T use organic solvents or acidic cleaners, lime-scale removers, household vinegar or cleaners containing acetic acid for cleaning

DON'T use any sort of brushes or abrasive sponges and scrubs

DOs

DO dry the tap after washing up with a dry soft cloth (we advise this for cleaning your sink too)

DO use a soft damp cloth followed by a dry soft cloth to clean if the tap requires cleaning

That's all! We did say minimal care and maintenance. If you have any questions or need help with installation, please do not hesitate to contact us.

Live Chat - <https://www.hommix.co.uk>

Call us - 0330 113 9292

Email us - info@hommix.co.uk

