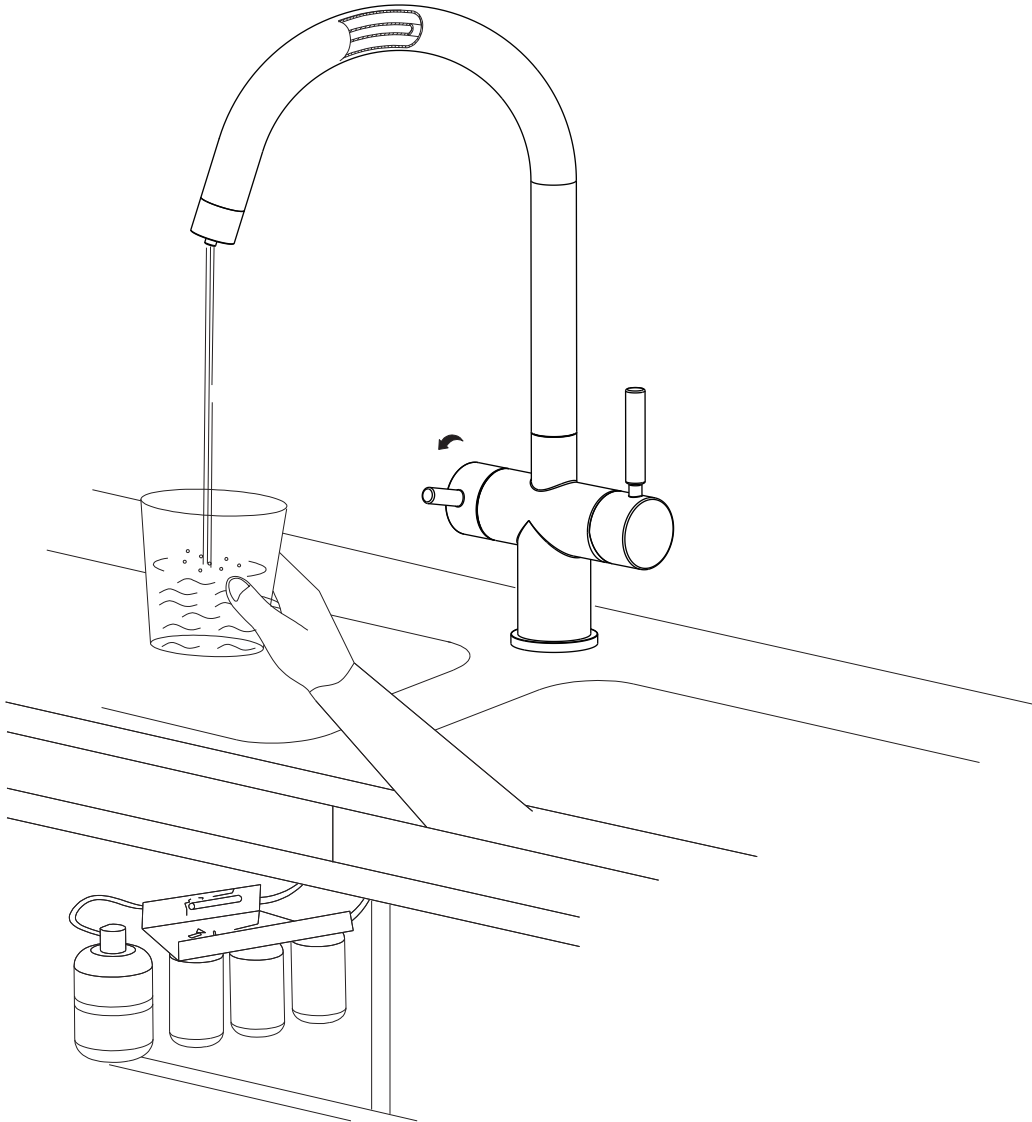




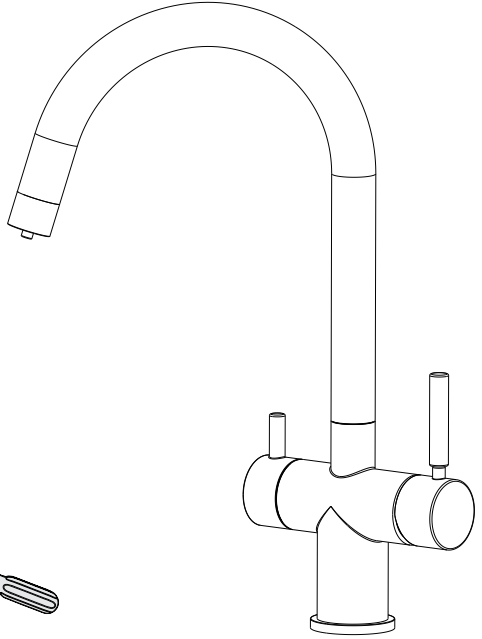
Hommix Como 3-Way Tap



Installation Instructions

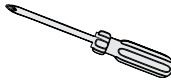
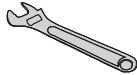
Features

- High Quality Ceramic Valve Cartridges
- 1/4" or 3/8" Push Fit Connectors for Filtered Water
- Flow Rate approx 7.5L pm @ 3Bar
- UK Standard 1/2" BSP Hot and Cold Connections

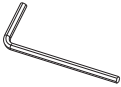


Tools for Installation

- PTFE (Plumbers) Tape (optional)
- Adjustable Spanner / Monkey Wrench
- Phillips screwdriver

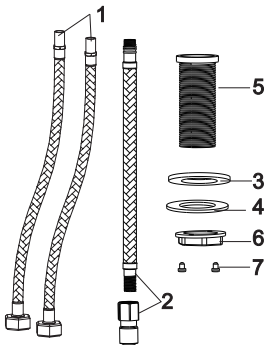


* 2.5mm Allen Key may be required for future maintenance

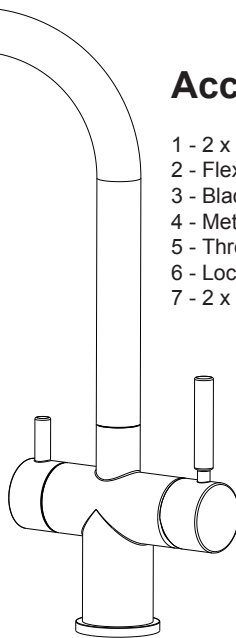


Accessories

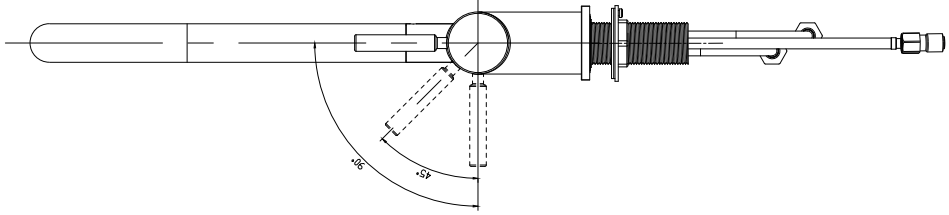
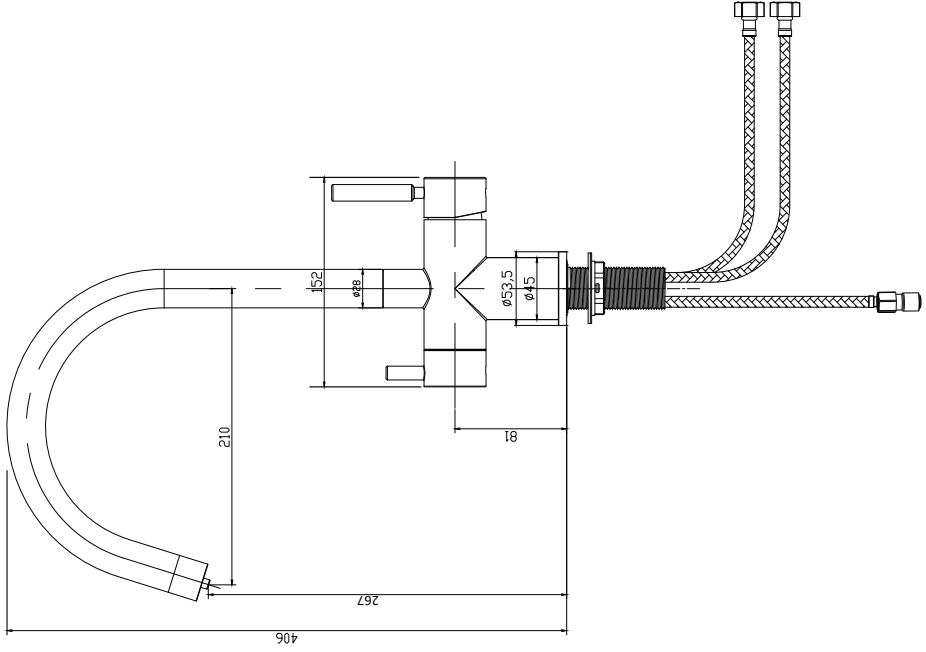
- 1 - 2 x 1/2" BSP 60cm Flexi Hoses (Hot & Cold)
- 2 - Flexi Hose with Push Fit Adapter (1/4" & 3/8")*
- 3 - Black Rubber Gasket
- 4 - Metal Washer (Stainless Steel)
- 5 - Threaded Shank
- 6 - Lock Nut
- 7 - 2 x Fixing Screws (Phillips)



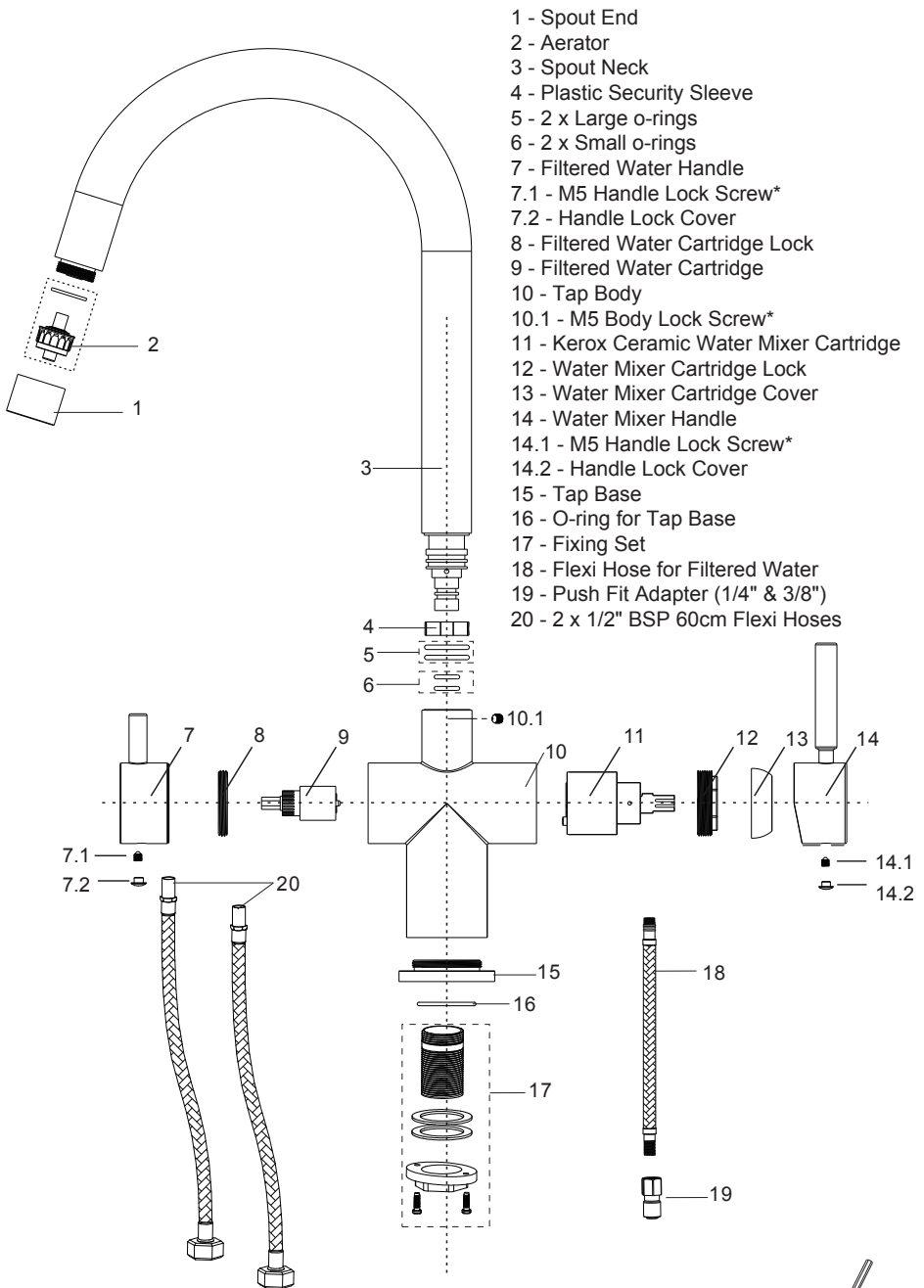
(Stainless Steel Flexible Hoses)



*3/8" Adapter is enclosed within the mounting set (plastic seal bag)



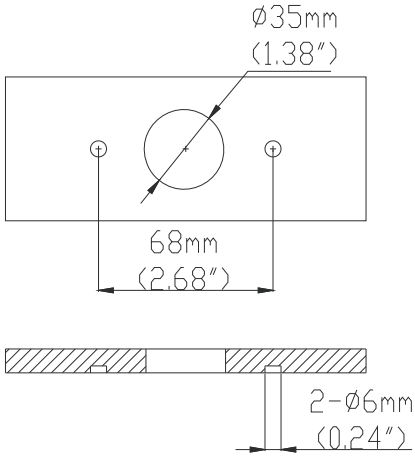
Exploded View Diagram



*Requires 2.5mm Allen Key

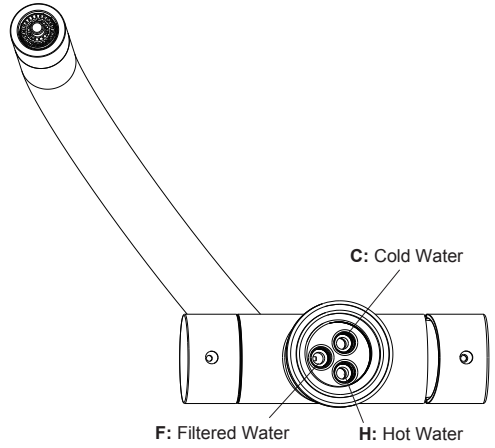
Important Note. 1

You do not need to drill any holes, the illustration below only demonstrates measurements of the lock nut screws.



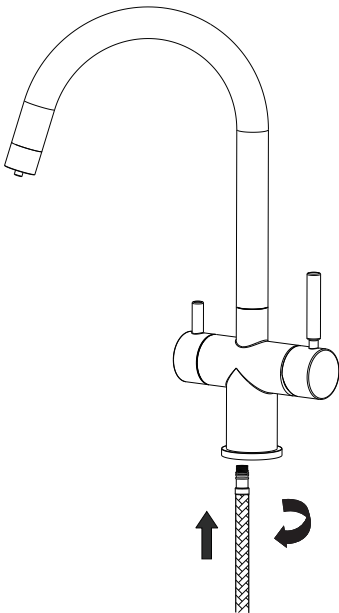
Important Note. 2

Please ensure the tap hoses are attached to the correct positions as marked below.



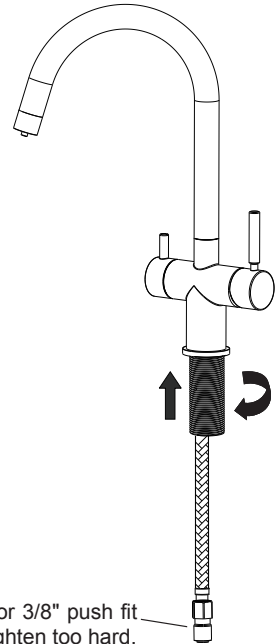
Step 1.

Attach the Filtered Water Flexi Hose.



Step 2.

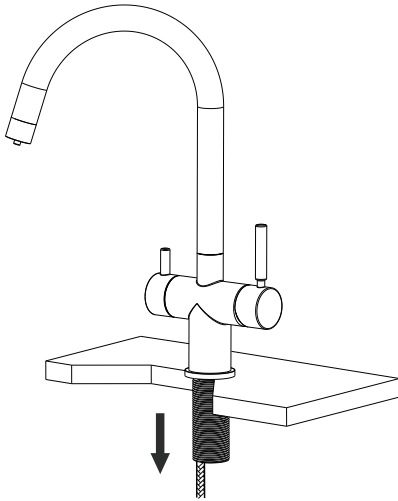
Attach the Threaded Shank, must be fully tightened (we advise using pump pliers).



Step 3.

Insert the tap through the worktop / sink hole.

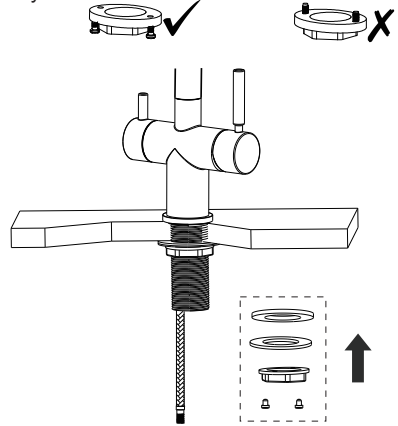
Step 3 Pro Tip: Connect the hot and cold flexi hoses first, makes it easier for later and skip Step 5.



Step 4.

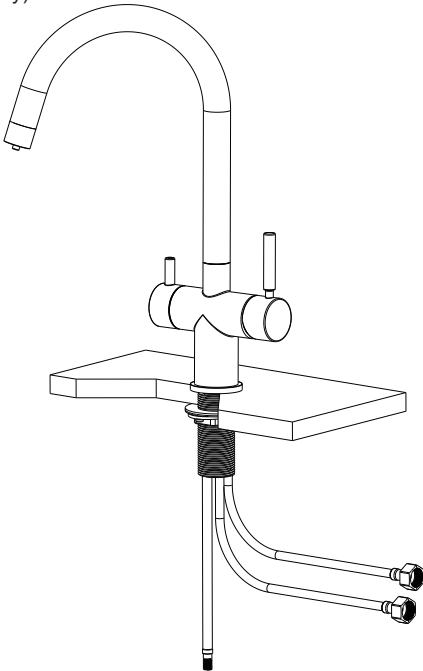
Attach the Fixing Set in this order to the threaded shank: **Black Rubber Gasket** > **Metal Washer** > **Lock Nut** and then secure the Lock Nut using the **Fixing Screws** with a Philips Screwdriver.

Step 4 Pro Tip: Only insert the Fixing Screws by a few of threads before mounting. Keep the screw below the surface and only tighten after securing the lock nut fully.



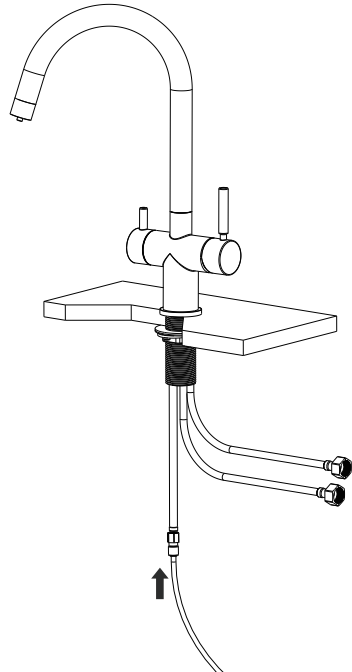
Step 5.

Attach the Hot and Cold Flexi hoses (if not done already).



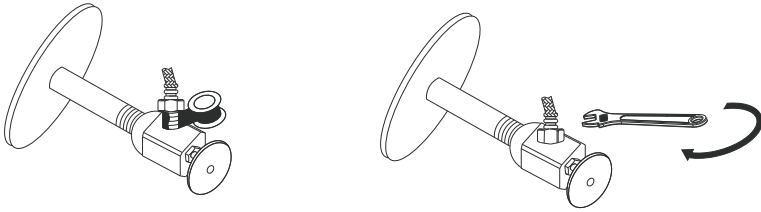
Step 6.

Securely push the Water Filter Tube (1/4" or 3/8") into the Push Fit Adapter.



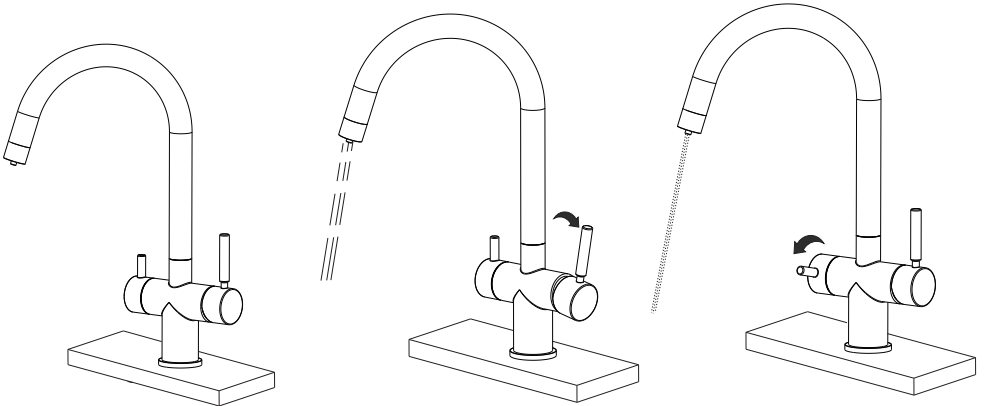
Step 7.

Connect the Hot & Cold Hoses to the inlet water. Only use PTFE Tape if required.



Step 8.

Test your 3-Way Tap to ensure it is dispensing water.

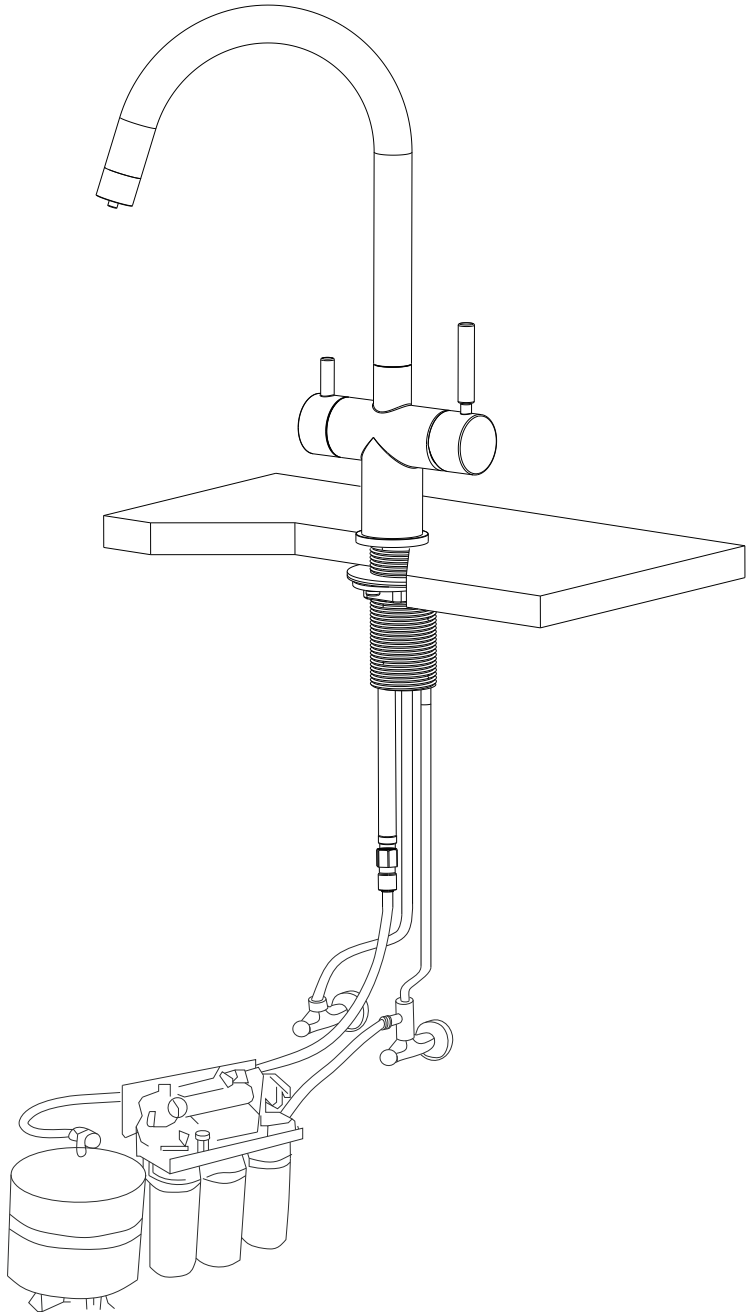


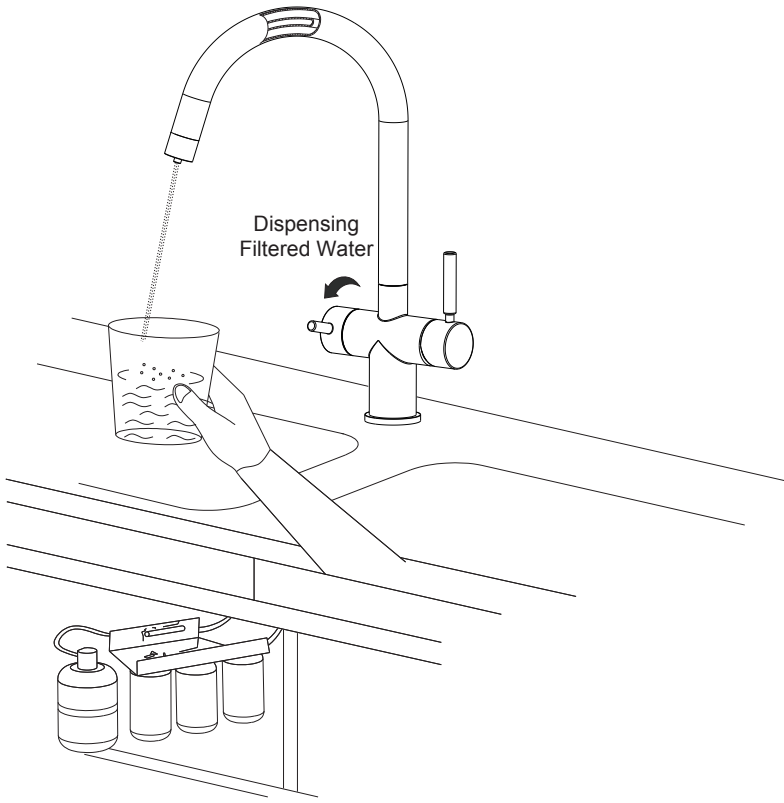
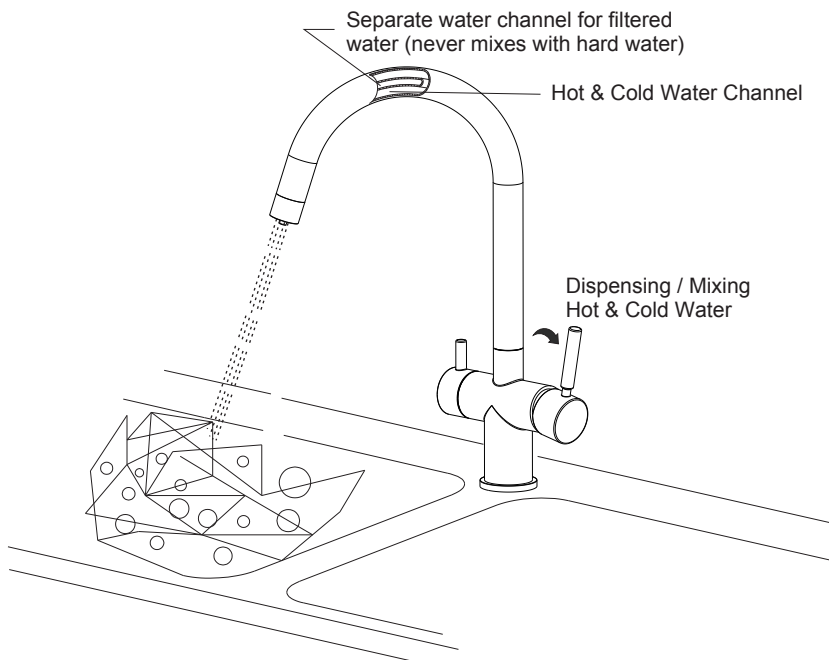
Important Note:

Please ensure that any sand, silt, rubble, or debris that may block the valve cartridge or aerator is removed before installing the tap.

During construction, water pipes can accumulate debris. Please ensure the isolation valves and pipework are thoroughly cleaned and flushed before connecting the hot and cold supply hoses.

Illustration of a Reverse Osmosis System connected to your new Hommix 3-Way Tap





Taking care of your tap

Your Hommix 3-Way Tap requires minimal care and maintenance but here are a few tips:

DONT's

DON'T use cleaning products, chemicals or any other types of substances to clean the tap.

DON'T use organic solvents or acidic cleaners, lime-scale removers, household vinegar or cleaners containing acetic acid for cleaning.

DON'T use any sort of brushes or abrasive sponges and scrubs.

DO's

DO dry the tap after washing up with a dry soft cloth (we advise this for cleaning your sink too).

DO use a soft damp cloth followed by a dry soft cloth to clean if the tap requires cleaning.

That's all! We did say minimal care and maintenance. If you have any questions or need help with installation, please do not hesitate to get in touch.

Live Chat - <https://www.hommix.co.uk>

Landline - 0330 113 9292

Email - cs@hommix.co.uk

Follow Us On Instagram: [hommix.uk](https://www.instagram.com/hommix.uk)



HOMMIX