



**Maintenance instructions :** Keep lubricating with WD 40 or equivalent lubricant after every 25000 cycle to ensure optimum performance.

For use on fire doors products must be fitted with intumescent pad (1mm - 30min & 2mm-60min)

		<b>D.P. Garg &amp; Company Pvt. Ltd.</b> B-210B, Phase-2, Noida - 201305 (U.P.) India Ph. No.: +91-120-2460091, 2460085-87 Fax. 91-120 2460083	<b>23</b>
2812-CPR-AG5149	1121-CPR-UK-AG7862	BS EN 12009 : 2003 NPD M 4 1 0 F - B 0 1 0	

For Declaration of Performance please go to : [www.garglocks.co.in](http://www.garglocks.co.in)

# TUBULAR LATCH

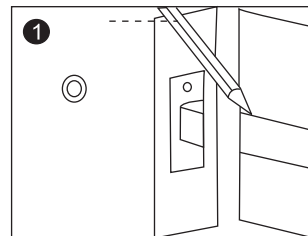
DECOR&DECOR / Elite

## Fitting instruction for the following

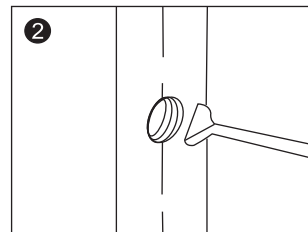
### Tools required :

- Drill & 25.4mm (1") drill bit
- Mallet
- Chisel
- Pozi drive Screwdriver
- Pencil/Marker
- Masking tape

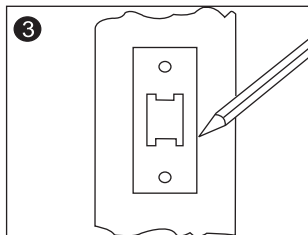
**Fig1.** Preparation to the Door : Position the latch/deadbolt body as near to the mid height of the door as possible not over 1100mm from bottom for fire doors making sure that the proposed morticed hole avoids cutting through doorframe joints. Place the latch body against and across the door edge and mark the top and bottom edges of the body as illustrated.



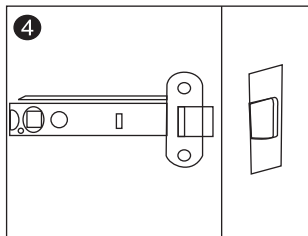
**Fig2.** Along the door edge mark a vertical line centre to the door thickness, which is used as a central guide line for a hole 25.4mm (1") diameter to be drilled to the required depth. The required depth = latch/ deadbolt body length + fixed forend. Helpful hint : Mark the "drill-bit" using adhesive tape or a suitable visible marker.



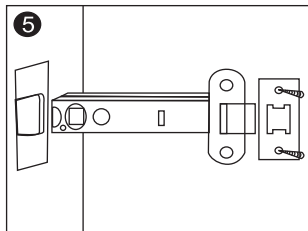
**Fig3.** Insert the latch into the prepared morticed hole and mark around the faceplate. Remove the latch and chisel out a recess to accept fixed forend ensuring that when fitted the faceplate is flush with the door edge.



**Fig4.** Place the body against the door face and in line with the lock recess and also making sure that allowance is made for the faceplate, mark and drill through the hole position for the spindle.



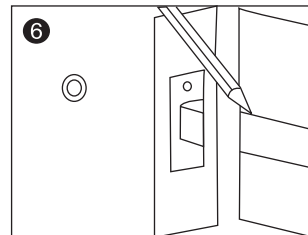
**Fig5.** Fix the tubular latch into the door with the screw provided, ensuring the spindle passes through freely into the latch body. Fix handles, making sure to cut the spindle to the required length.



**Test the final fitting ensuring that the latches/deadbolt freely operates.**

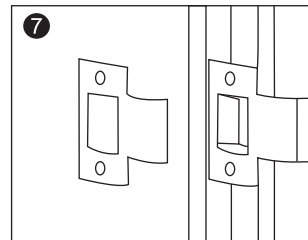
**Important:** For tubular latches only, when fitted, check that the angled or bevelled edge of the latch bolt is facing the doorframe when closing. Should the latch bolt require “reversing” remove the latch turn in around & reinsert.

**Fig6.** With the latch fitted and the door in the open position close the door gently against the frame and mark on the doorframe the top and bottom edge of the latch/deadbolt.



For fire door application use intumescent pad (1 pad per latch/lock, 1 mm for 30min & 2mm for 60 mins.)

**Fig7.** Transfer these two marks across to the inside face of the door frame rebate. Mark an additional horizontal line approximately 2mm above the top line. This line represents the top inside edge of the aperture with the striker and will provide operating clearance. To determine the horizontal position of the striker, close the door, applying a little pressure, mark a line on the inside rebate face against the flat face of the latch/deadbolt. This line determines the outside striking edge of the “striker aperture” with final position established, place the striker in position. mark around the outside profile of the striker and inside edge of the aperture.



Making allowance for the dust cover chisel out a recess to the required depth. Chisel out recess for the forend of the striker and dust cover, ensuring when fitted the forend is flush with the frame. Plastic dust box must not be in used in fire door assembly.