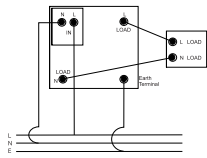
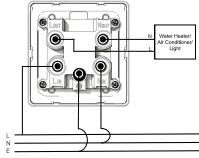


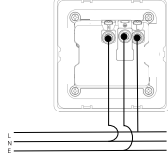
成品70x70mm



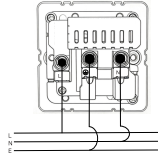
1 gang+fuse switch wiring



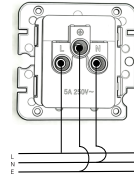
20A/45A DP switch wiring



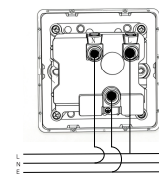
Single socket wiring



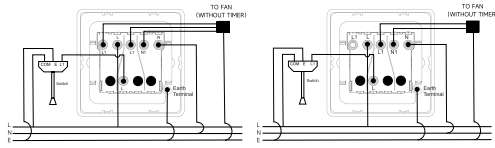
Single socket with USB/USB & C



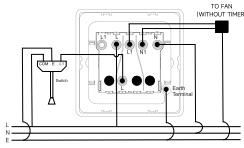
5A socket wiring



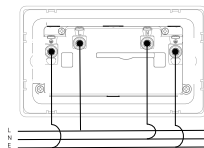
15A socket wiring



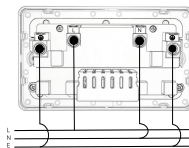
Fan isolator switch wiring(with timer)



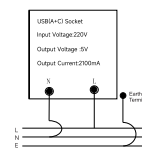
Fan isolator switch wiring(without timer)



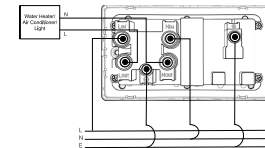
Double socket wiring



Double socket USB+C wiring



USB & C



Cooker unit wiring



PRODUCT INSTRUCTION

Wiring instruction

1. Power Off Confirmation

- Power has been isolated at the consumer unit/fuse box

2. Cable Preparation

- Conductor length is sufficient for terminal connection
- The length of bare wire after stripping the conductor end is suitable for the terminal

3. Wiring Operation

- Each wire is connected to the matching terminal
- Earth connection is standardized, with bare earth wires sheathed with sleeving
- Only the bare end of the wire enters the terminal, with no bare wires exposed
- Terminal screws are tightened (not over-tightened)

4. Accessory Installation

- No wires are trapped between the plate and the wall when placing the accessory into the mounting box
- The accessory is secured with screws (not over-tightened)
- The buckle on the metal plate is aligned with the slot on the metal bracket and buckled into place

5. Power-On Test

- Fuse is replaced/ MCB is reset (tripped)
- Power is restored and functional testing is completed

6. Special Switch Adaptation

- One-way/two-way/bell push/intermediate switches are wired in accordance with the corresponding rules
- The supply voltage compatibility of the bell push is confirmed before installation

Additional Advice for Decorative Products

1. General Preparation

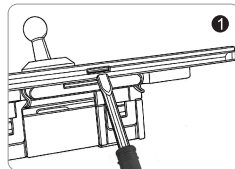
Ensure the wall surface is flat and smooth with no bumps or projections.

2. Installation of Bracket Without Screw Fixing Holes

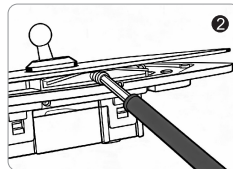
Fix the main unit (with integral gasket) to the back box using the two supplied fixing screws.
Clip the bracket onto the main assembly, ensuring the screwdriver notch is aligned with the right side of the plate.

3. Panel Removal

Insert a medium-sized flat-bladed screwdriver into the notch.
Pry the screwdriver against the gasket to pry off the panel.



Align a screwdriver with the reserved notches on both sides of the panel and pry the panel off for removal.



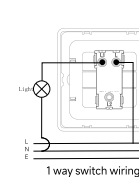
Once the screwdriver is inserted, turn it gently, repeat the same action on both sides, and the panel can be removed.

Care

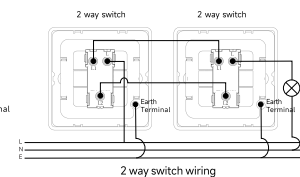
- Appearance Maintenance:** Wipe the front surface with a soft cloth regularly to preserve the texture of the decorative finish.
- Installation Prerequisite:** Ensure the wall is decorated, finished, and dry with no moisture before installation.
- Substances to Avoid Contact:** When cleaning or decorating, keep adhesive tape (including low-tack masking tape), solvents, white spirit, multi-surface cleaners, industrial multipurpose cleaning wipes, and wet wipes away from the metal front-plates.
- Impact Note:** The above substances can damage the lacquer/plated finish of the plates but will not affect the product's functionality.

Safety Warning Quick Notes

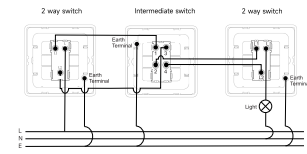
- Install per local Building Regulations; consult a registered competent electrician if in doubt.
- Read & follow safety wiring instructions strictly.
- Isolate mains power before any electrical work (consumer unit/fuse/ MCB).
- Wire in compliance with the latest IET Regulations (BS 7671).
- Use cable with correct rating & type to avoid fire hazards.
- Do not exceed the device's load rating (marked on the product rear).



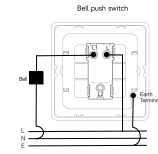
1 way switch wiring



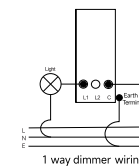
2 way switch wiring



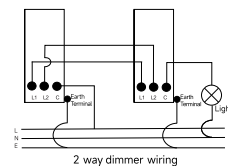
Intermediate switch wiring



Bell push switch wiring



1 way dimmer wiring



2 way dimmer wiring