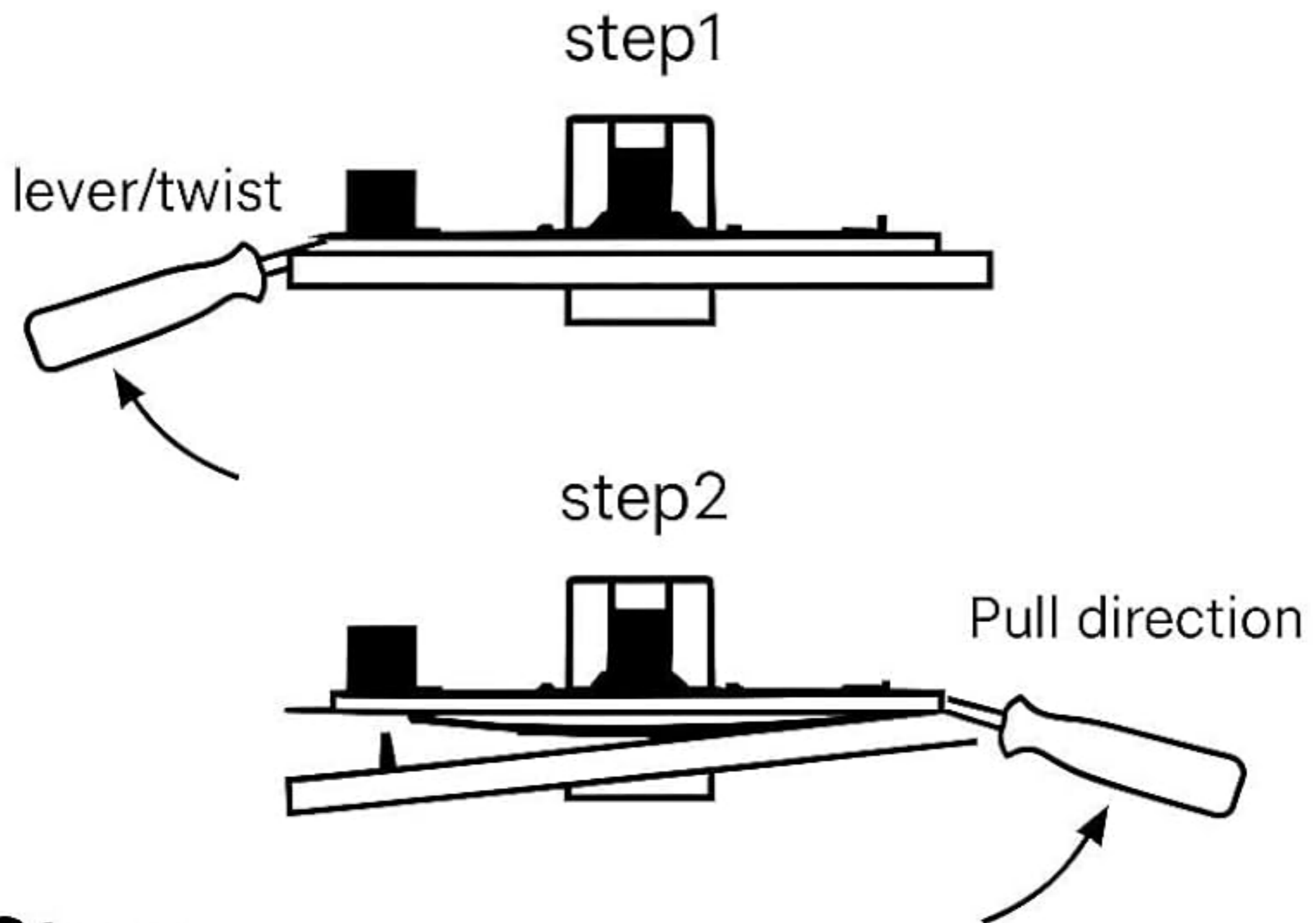


FACEPLATE REMOVAL INSTRUCTIONS FOR SHIP SCREWLESS RANGE



Steps:

1. Insert a flathead screwdriver into the slot on one side of the metal plate. Gently lever/twist it outwards to release the snap-fit clip, as shown in Step 1.
2. Repeat the process on the opposite side to fully release the metal plate, as shown
3. Carefully remove the metal plate and gasket.