

ARCHITECTURAL GRATES + DRAINS



100AAG20

Linear Drain

Downloaded 29/05/2024 (please check for updates)

Stormtech is the only linear drainage system available with full Greentag and Watermark certification across our complete product range.

Telephone 1300 653 403 | Web stormtech.com.au



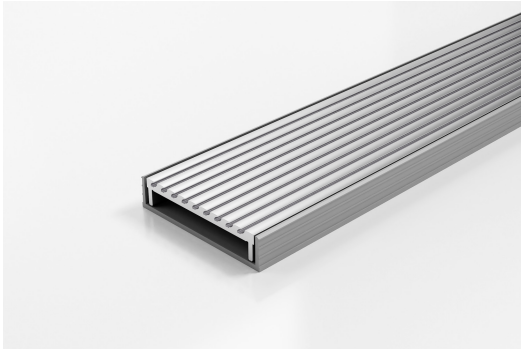


ARCHITECTURAL
GRATES + DRAINS



100AAG20

Linear Drain



The 100AAG20 features a unique, all Aluminium Wave grate design.

Made in Australia from high grade, locally sourced and anodised Aluminium.

Modular site finished linear drainage system features all Aluminium Wave grate combined with a uPVC channel.

Code 100AAG20

Range 100

Grate Style AA

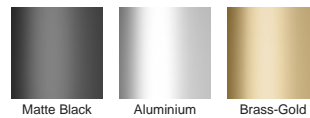
Category Modular Kits

Channel Material uPVC

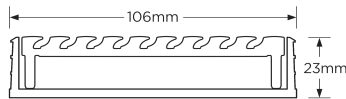
SPECIFICATIONS + DIMENSIONS

| | |
|----------------------|--|
| Channel Width | 106mm |
| Channel Depth | 23mm |
| Length(s) | 900mm 1000mm 1200mm 1500mm 1800mm 2000mm 2200mm 2400mm 2700mm 3000mm |
| Outlet Size | DN40, DN50, DN80, DN100 |

STORMTECH COLOUR FINISHES



Electroplate finishes subject to natural variation with time and local environment. Factors such as pools/surf beaches may require electropolishing. Contact us for suitability.



Grates longer than 1500mm supplied in sections. Tile Inserts longer than 1200mm supplied in sections. Channels over 3000mm supplied in sections with joiner. +/-2mm tolerance on dimensions.

PRODUCT APPLICATIONS

- | | |
|-----------------------------|----------------------------|
| Bathroom Drainage | Hospitality Drainage |
| Aged / Health Care Drainage | Paved Area Drainage |
| Balcony Drainage | Shower Drainage |
| Commercial Drainage | Multi-Residential Drainage |
| Courtyard / Patio Drainage | Special Needs Drainage |
| Pool and Spa Area Drainage | Threshold Drainage |

Copyright © Stormtech Pty Ltd. Patent 733361. Drawings not to scale, please use dimensions shown. Downloaded 29/05/2024 (please check for updates)



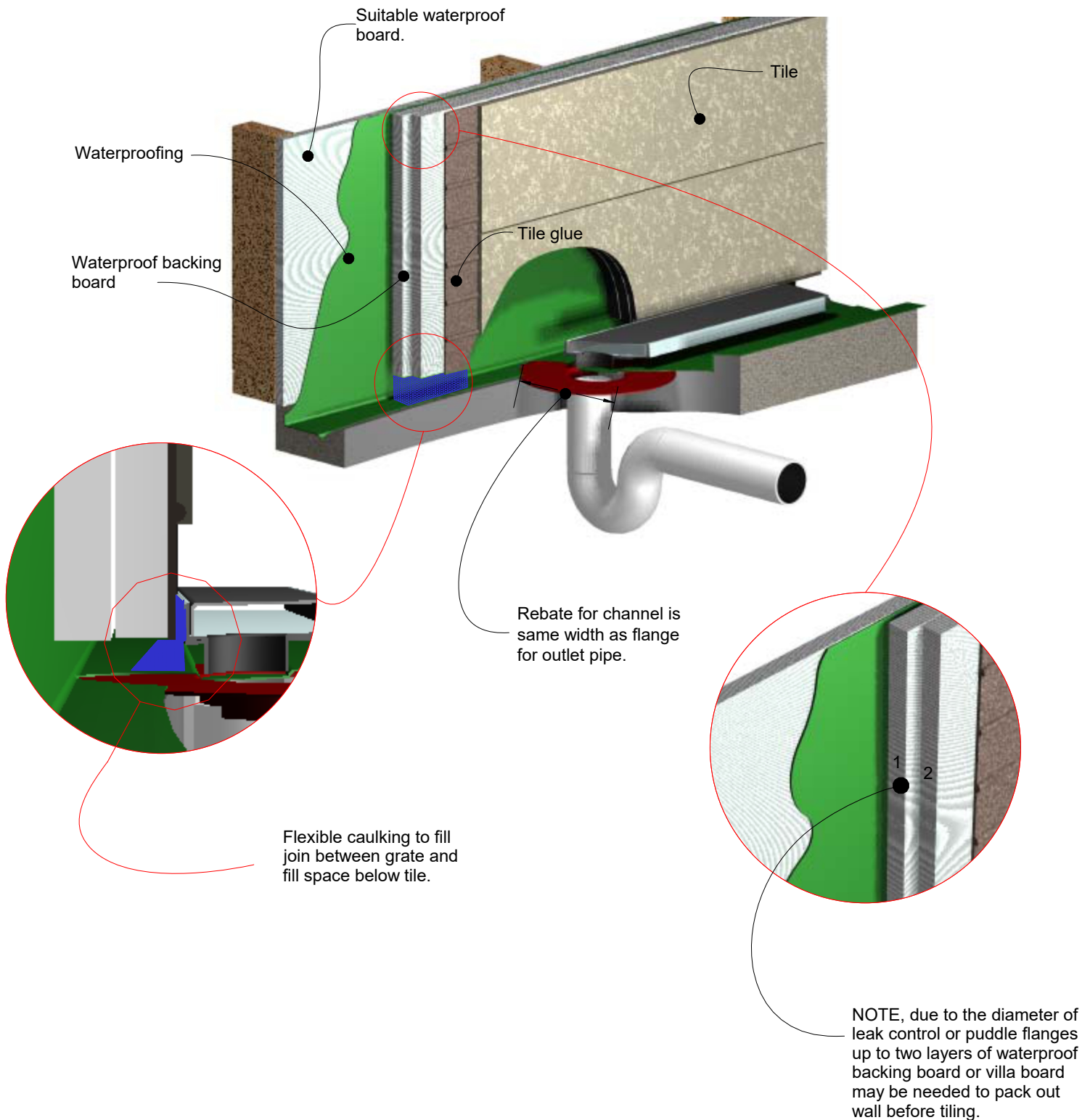
Visit stormtech.com.au
for tools + inspiration.

Phone **1300 653 403**

Email info@stormtech.com.au

100G20 Against Wall

For 100AR20, 100PS20,
100TR20, 100MND20, 100AA20.

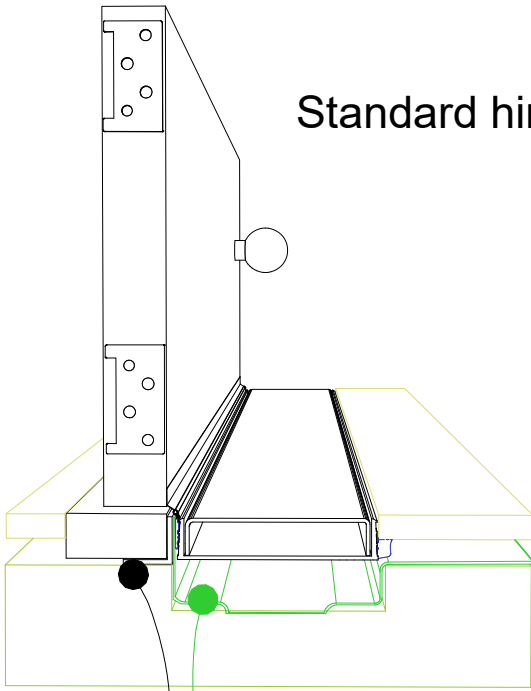


100G20 Threshold installation suggestion

For 100AR20, 100PS20,
100TR20, 100MND20, 100AA20.



Standard hinged door

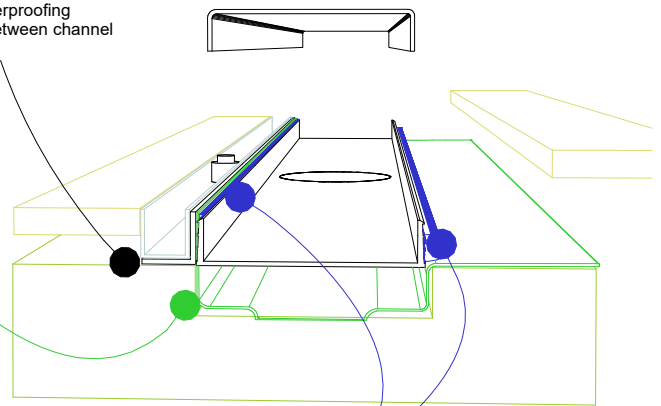


Aluminium angle
to support waterproofing
and junction between channel
and door sil.

Waterproofing

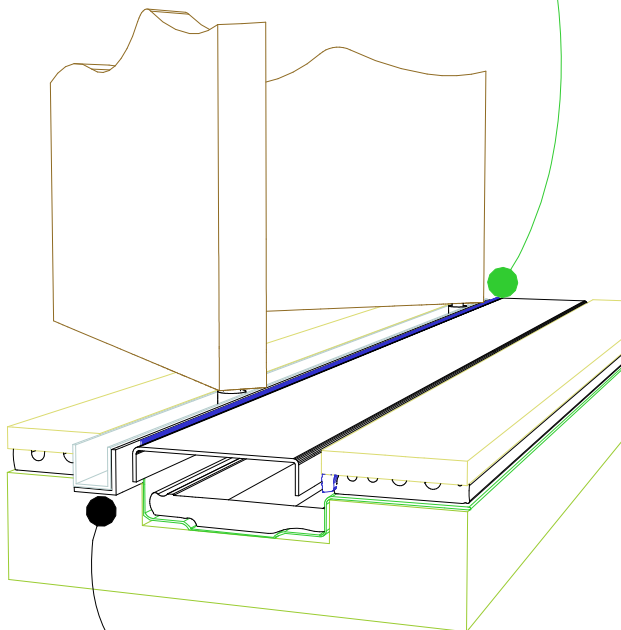
Top hung slider

Aluminium angle
to support waterproofing
and junction between channel
and door track.



For all types of threshold
installation ensure both sides
of the channel are sealed
before laying tile.

Bi-fold door



Aluminium angle
to support waterproofing
and junction between channel
and door track.

NOTE, ensure weather stip
is used on the appropriate
side of the door to ensure
drafts and moisture are
minimised.

NOTE, ALWAYS ensure the
waterproofing is completed
before laying the Stormtech.

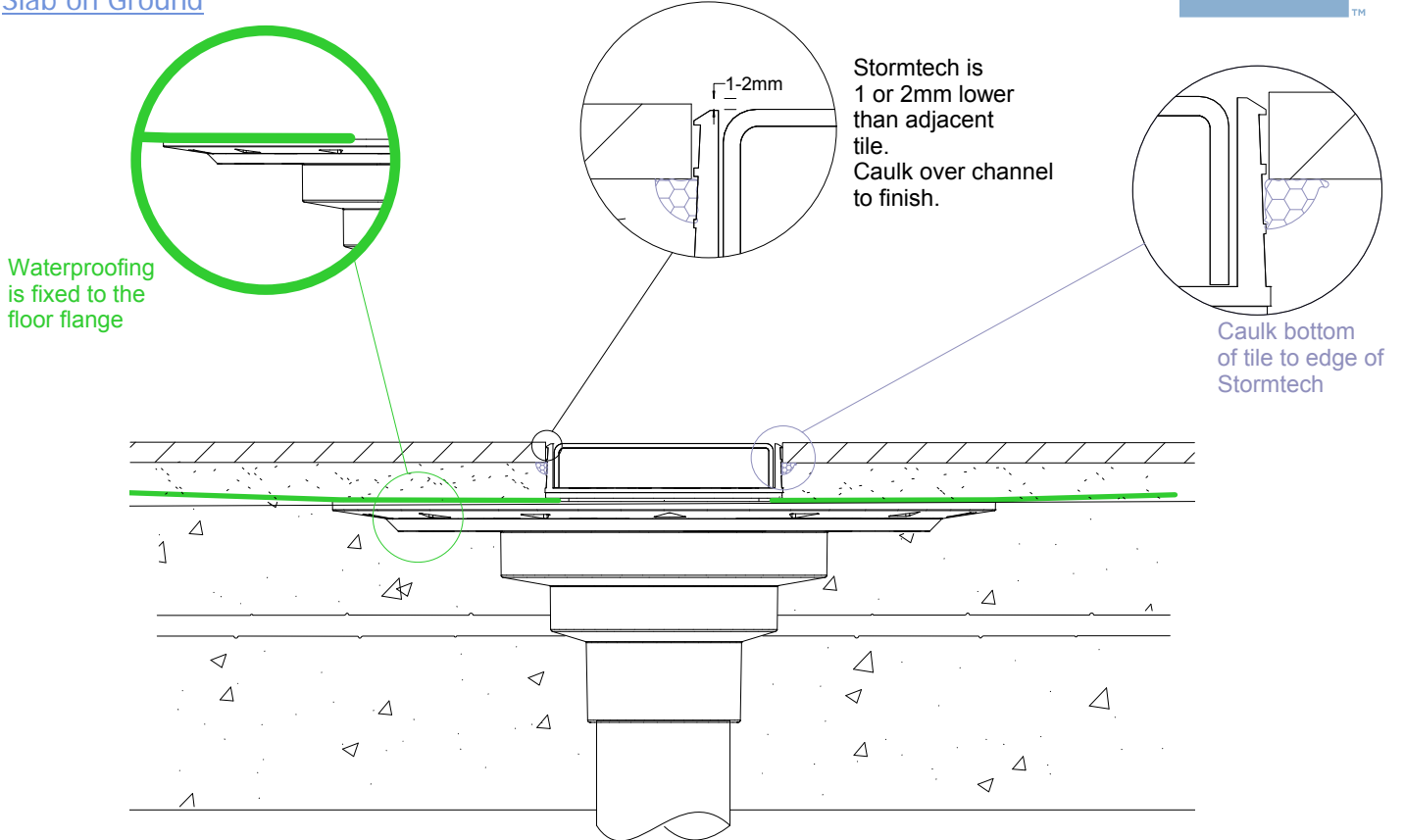


100G20 Concrete Floor or Deck

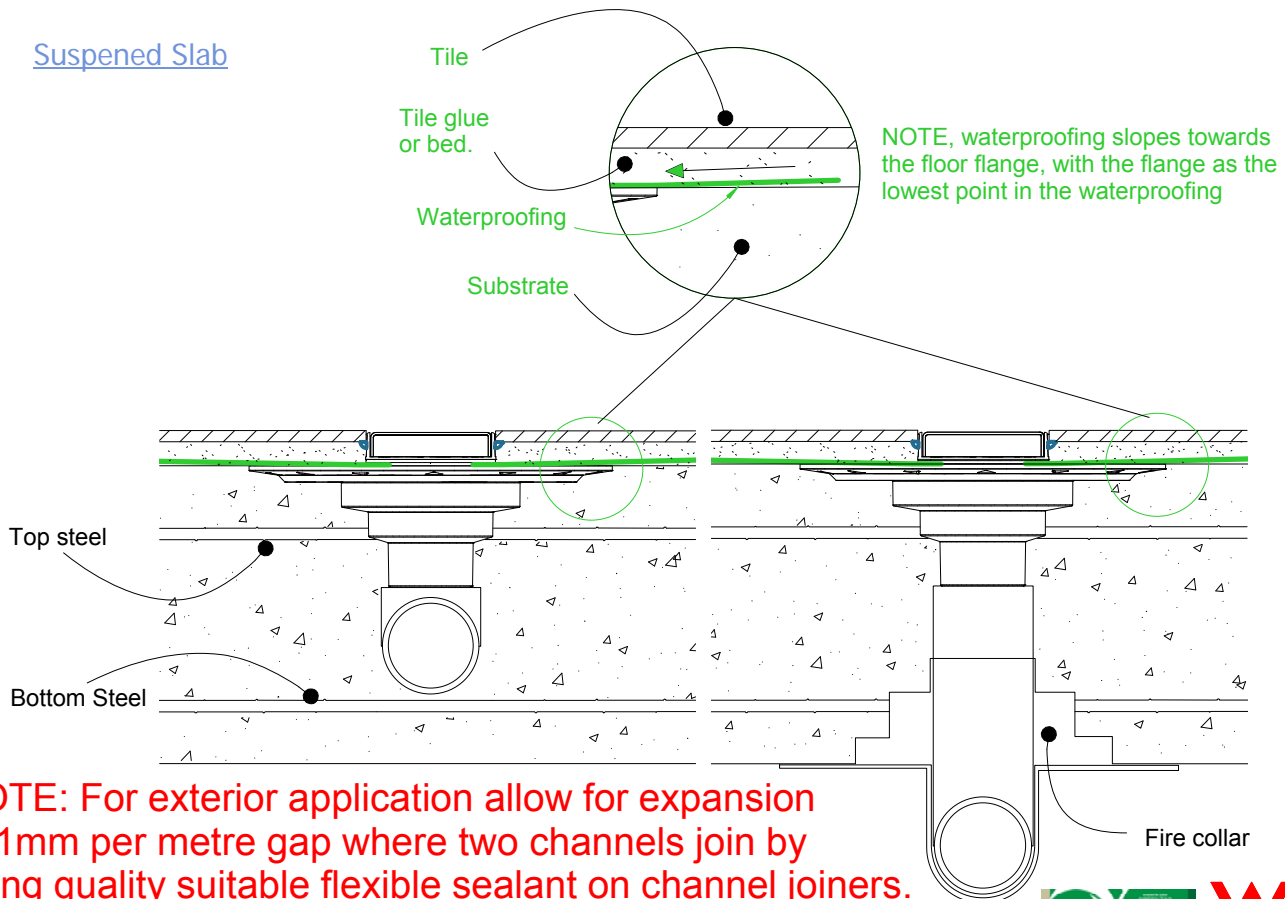
For 100AR20, 100PS20,
100TR20, 100MND20.



Slab on Ground



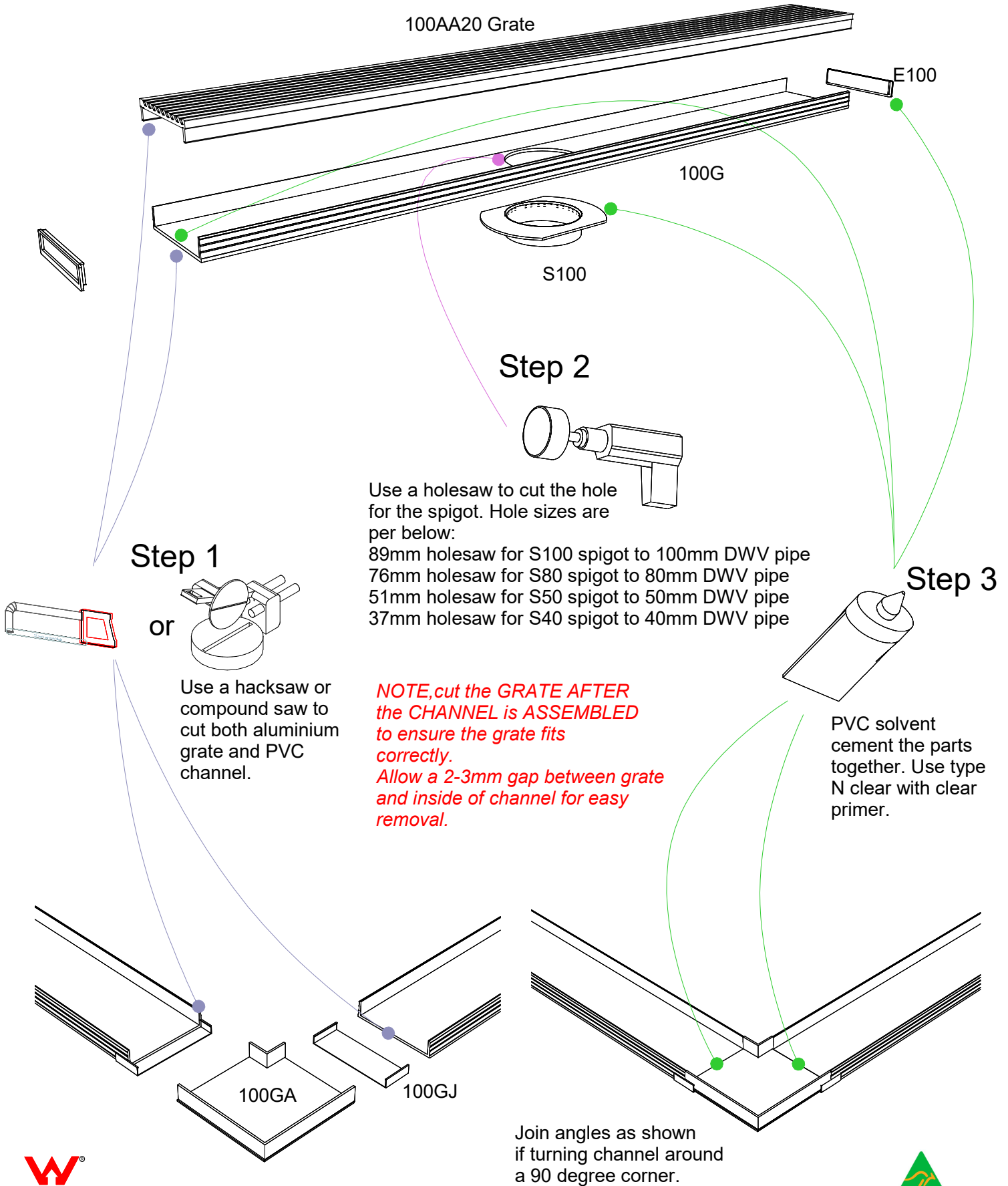
Suspended Slab



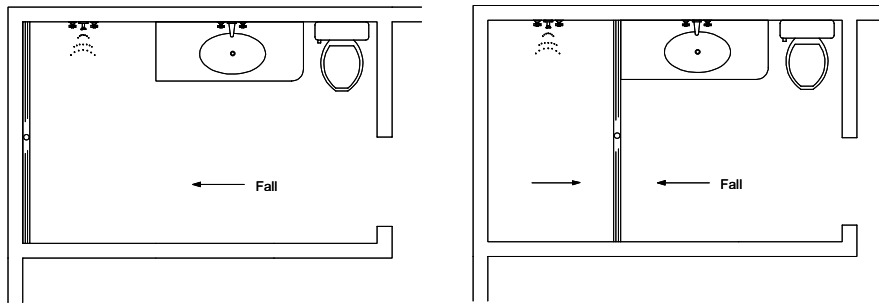
NOTE: For exterior application allow for expansion of 1mm per metre gap where two channels join by using quality suitable flexible sealant on channel joiners. Use PVC solvent cement for ends and outlets.



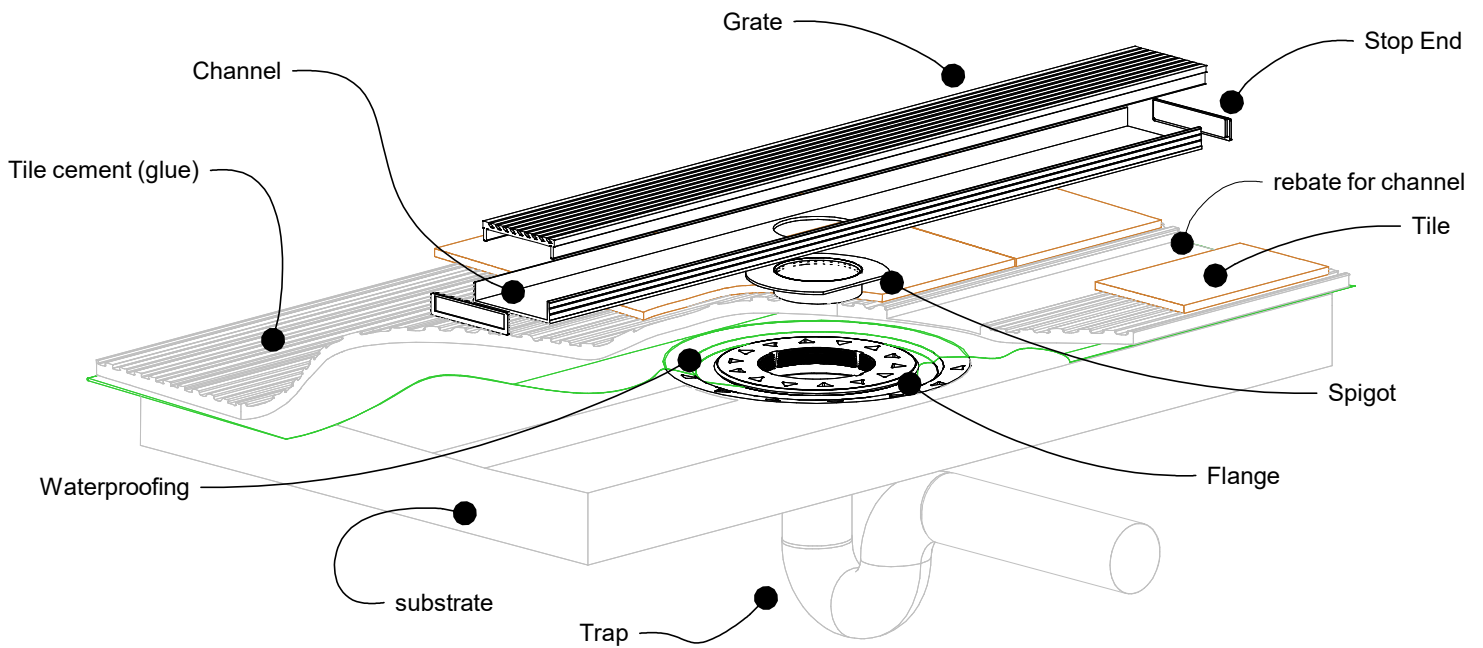
100AAG20 Assembly



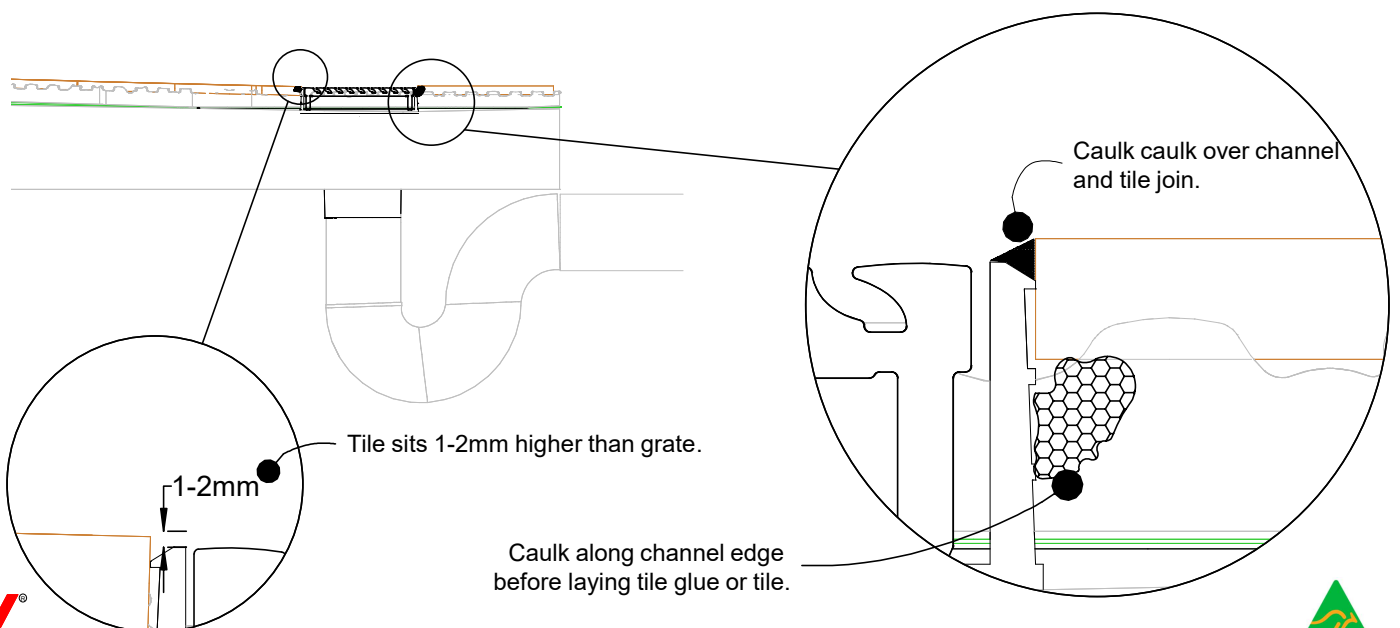
100AAG20 Bathroom



NOTE, ensure pipe sizes and outlet sizes selected are as per requirements in AS3500.
NOTE, refer to AS3740 for waterproofing requirements related to your specific installation.



NOTE, this method requires the channel system to be ABOVE and SEPARATE from the WATERPROOFING.

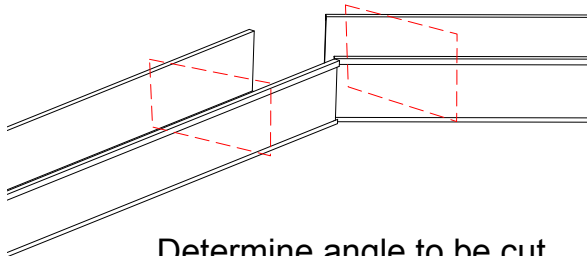


100G20 Off-Set corners



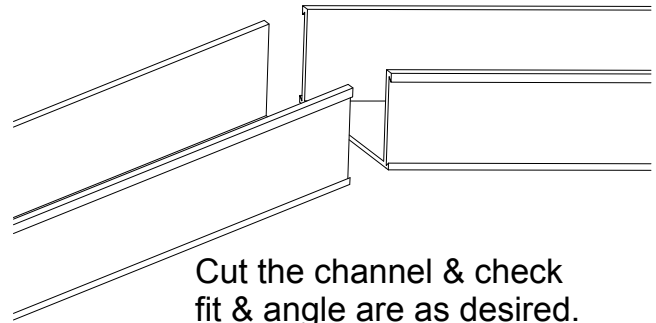
When assembling channel for corners other than 90 degrees, the following fittings and method is suggested.

1



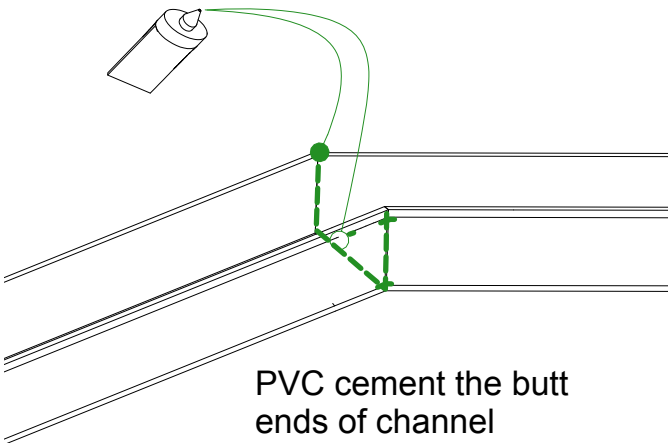
Determine angle to be cut

2



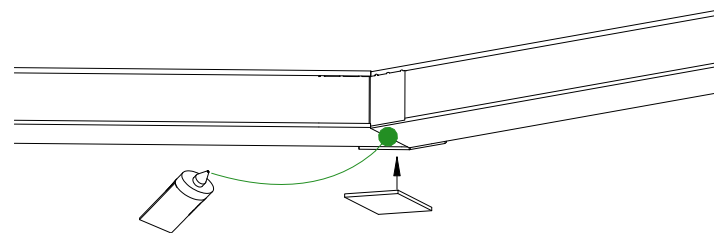
Cut the channel & check fit & angle are as desired.

3



PVC cement the butt ends of channel together.

4



Fix an off-cut of channel to underside to brace joint. Seal with adhesive sealant if joint is uneven.



Visit stormtech.com.au



StormtechTM

22 Norfolk Avenue, South Nowra, NSW 2541 Australia
Phone 1300 653 403 Email info@stormtech.com.au

