

Water Butt Diverter Kit Instructions

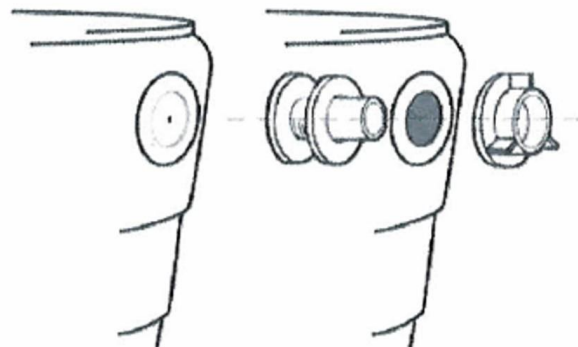
EASY TO ASSEMBLE!

Fits standard 68mm round and 65mm square plastic downpipes.

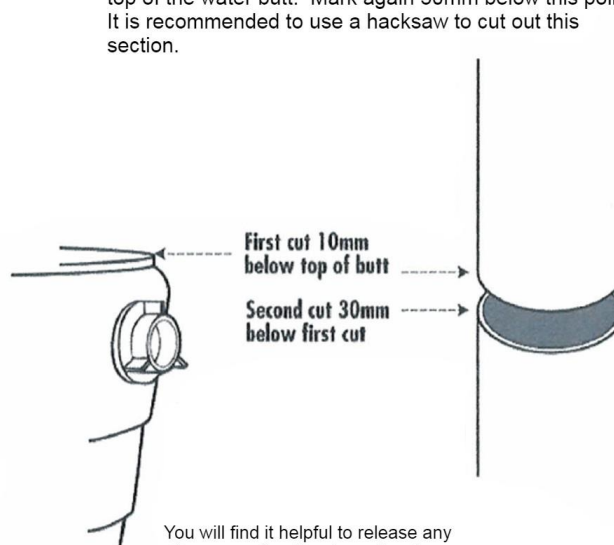
The waterbutt diverter kit is a simple to install product that allows you to collect collect rainwater from your downpipe without the water butt overflowing when full. The butt can either be positioned next to your downpipe or further away using an extended hose

A Ensure the lid is off your water butt. If your water butt is not pre-drilled, then you will need to drill a 25mm hole to fit the diverter.

B You find the drill points in the top lip of the water butt to the left and right. Drill a 25mm hole on the side of the water butt closest to the downpipe you wish to fit the water butt to. Ensure that the centre of the drill bit is in the marked circular area. Push the diverter connector through the washer from the inside of the water butt then fit and tighten the nut on the outside to form a water tight seal

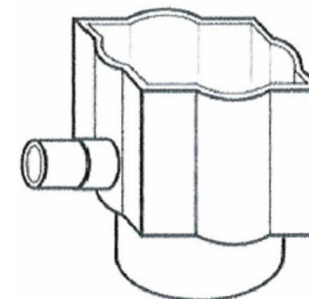


C Position the water butt with the tap facing forwards adjacent to the downpipe. If using a stand, place the water butt on it. A 30mm section will now be removed from the downpipe. Mark the downpipe 10mm below the top of the water butt. Mark again 30mm below this point. It is recommended to use a hacksaw to cut out this section.

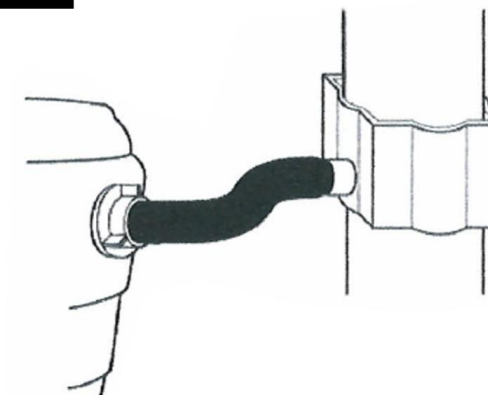


You will find it helpful to release any clips supporting the downpipe, in order to insert the diverter body, ensure that the clips are re-fitted after installation.

D Fit diverter body with square end upright into the cut section of the downpipe



E Connect hose between diverter body and Water Butt Connector.



Remember, when the diverter is correctly fitted the water butt will fill up to 10mm of the top.

Should a filling error occur follow:
Water butt Overflows - Raise the Butt
Water Level Too Low - Lower the Butt

In the case of a low water level ensure enough rain has fallen to fill the butt before assuming a filling error has occurred.