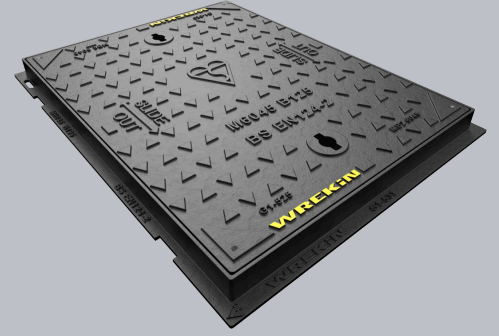
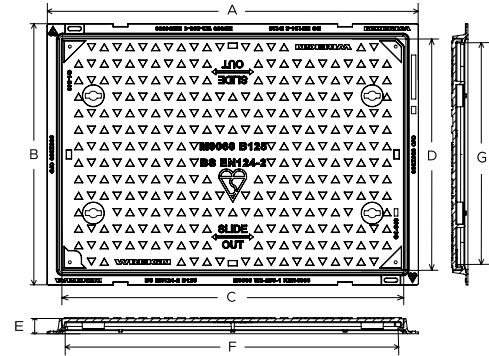


DMS1B2/6045/K

Safeseal B125 manhole cover 600mm x 450mm clear opening with 40mm frame depth



CHARACTERISTIC	VALUE
Range	Safeseal
Clear opening (mm)	600 x 450
Overall frame (mm)	700 x 550
Frame depth (mm)	40
Options	<ul style="list-style-type: none"> ▶ Screw locking ▶ Neoprene seal ▶ Standard badging ▶ Safety grille ▶ Flood and odour control plate ▶ Pressure relief holes



SPECIFICATION

GENERAL INFORMATION

Stock code	DMS1B2/6045/K
Primary material	Ductile iron
Range	Safeseal
Category	Manhole cover
Flanges	4

STANDARDS, CLASSES AND GROUPINGS

Standards	BS EN 124-2
BS EN 124 Class	B125
BS EN 124 Group	2
Third party certified	Kitemark

PACKAGING AND HANDLING

Full pallet quantity	20
----------------------	----

DIMENSIONS

Frame shape	Rectangular
Manhole shape	Rectangular
Overall frame (A x B)	700 mm x 550 mm
Clear opening (C x D)	600 mm x 450 mm
Frame depth (E)	40mm
Base opening (F x G)	650 mm x 500 mm

EPD DATA

Total life cycle (cradle to grave) 52.85 kg CO₂ equivalent



Full LCA data available here

FEATURES

- ✓ The labyrinth seal design prevents odour escape and protects against water ingress.
- ✓ Safety keyways prevent accidental lifting key disengagement during handling for safer operation.
- ✓ Independently tested by a UKAS-accredited laboratory to achieve a PSRV value of 70+ on the chequer surface.
- ✓ Designed with tapered sides and centralised lifting points to allow the cover to slide out of the frame.
- ✓ Indexed corners ensure correct orientation and alignment first time, every time.

AVAILABLE OPTIONS

- ✓ **Screw locking**
Screw locking deters unauthorised access to the chamber. An extended shank socket set is required to engage the locking screw.
- ✓ **Neoprene seal**
A neoprene seal can be included to reduce ingress and egress of dirt and gasses from the chamber.
- ✓ **Industry standard badging**
Integral industry-standard badging e.g. SW (Storm Water) and FW (Foul Water). Details are taken at point of order.
- ✓ **Safety grille**
Safety grilles prevent accidental chamber falls. Available in a variety of configurations; including bars and mesh as drop-in or hinged.
- ✓ **Flood and odour control plate**
The flood and odour control plate is manufactured from steel and provides resistance to flood-water ingress and the chamber-odour egress.
- ✓ **Pressure relief holes**
Pressure relief holes provide additional airflow, with sizes permitted up to the maximum allowances specified in BS EN 124.

ACCESSORIES

STOCK CODE	DESCRIPTION
PC/UNIFORM/151076	Uniform chamber adjustment unit 760mm x 100mm x 15mm
PC/UNIFORM/251076	Uniform chamber adjustment unit 760mm x 100mm x 25mm
PC/UNIWEDGE/755012	Uniform support wedge 120mm x 50mm x 75mm
YPCR/U12.5	12.5Kg Unipak® rapid curing polyester resin mortar
YPCR/U25	25Kg Unipak® rapid curing polyester resin mortar
KEYS/L	Small cover combined lifting key
KEYS/LONG	Large cover lifting keys with a long handle

Tel: 01543 440 440
 Fax: 01543 440 444
info@wrekinproducts.com
wrekinproducts.com



- ▶ All information provided is subject to change without notice. While every effort is made to ensure accuracy and relevance, Wrekin Products Ltd. does not warrant the completeness or reliability of the information contained herein. Photographs, illustrations, and other visual materials are provided for illustrative purposes only.
- ▶ Wrekin Products Ltd. reserves the right to make design amendments or improvements to any product at any time, where such changes enhance performance or durability, without affecting compliance with the stated standards.
- ▶ Where errors or omissions are identified, amendments will be made as quickly as possible.
- ▶ It is the responsibility of all users to satisfy themselves the above data is current.
- ▶ All values stated are nominal within 2.5% tolerance.
- ▶ Installation details are available in the [knowledge base](#).
- ▶ All Wrekin products are supplied subject to our [terms and conditions of sale](#).
- ▶ If you require further technical details beyond those available on this datasheet, please [contact us](#).

