

# Outsunny

IN251100032V01\_UK

**84J-258V70**



**9**  
STEPS

  
20 MIN

**CE**

**EN\_IMPORTANT, RETAIN FOR FUTURE REFERENCE: READ CAREFULLY.**

**FR\_IMPORTANT: A LIRE ATTENTIVEMENT ET À CONSERVER POUR CONSULTATION ULTÉRIEURE.**

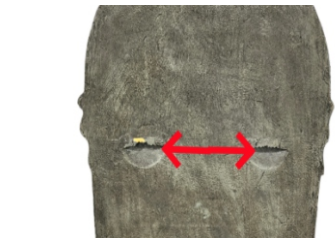
**ES\_IMPORTANTE, LEA Y GUARDE PARA FUTURAS REFERENCIAS.**

**PT\_IMPORTANTE, RETER PARA REFERÊNCIA FUTURA: LEIA ATENTAMENTE.**

**DE\_WICHTIG! SORGFÄLTIG LESEN UND FÜR SPÄTER NACHSCHLAGEN AUFBEWAHREN.**

**IT\_IMPORTANTE! CONSERVARE IL PRESENTE MANUALE PER FUTURO RIFERIMENTO E LEGGERLO ATTENTAMENTE.**

## Assembly:



④

⑤

⑥



⑨



**IMPORTANT:** Make sure no water is near the plug and always keep the power source in a dry place.

The first time you operate the pump it can take up to 5 minutes for the air to be completely expelled and water begins to flow properly.

Don't forget to add water regularly as water will evaporate over time.

Do not connect the chain to the supply while it is in the packaging.

## Trouble Shooting & Cautions

•If you have any questions and/or problems, please contact the retail store you purchased this fountain.

### •If your pump fails to run

- Check the circuit breaker or try a different outlet to make sure the pump is receiving electrical power.
- Check the pump discharge and tubing for any kinks and/or obstructions
- Any buildup obstructing the water flow can be flushed with a garden hose
- Check the rotor by removing the front cover & plate to access the impeller area. Turn the rotor and make sure that the rotor is not jammed or broken.

### • If your pump “spews”

- Check the water level to make sure the pump is completely submerged and there is enough water in the basin to operate your fountain. Not having enough water will cause your pump to spew.

### • If your pump is making abnormal loud noises

1. Disconnect the pump from the electrical power and remove front cover.
2. Carefully grip the impeller and gently pull the impeller/rotor assembly out of the pump housing.
3. Rinse the impeller/rotor assembly and clean the cavity with clean water. If breakage or damage is found, contact your local retailer for part.

## Fountain Care

- We recommend using PPL102's all-natural cleansing formula to eliminate foam, lime scale, and calcium buildup; fight mineral deposits; leave water crystal clear; help prevent staining; remove organic contaminants; and treat discolored water. This formula will help prevent pump damage due to hard water build up.

## Caution

- Always unplug the pump and transformer from the power supply before cleaning & handling.
- Uses with clean water only, do not place the fountain and/or parts in any other liquid.
- Periodically change water & clean the pump to keep free from microorganisms.
- Disconnect and store the unit in a dry place if not in use for extended periods of time.
- Do not lift, carry, or pull the pump by the power cord.
- NEVER LET THE PUMP RUN DRY.

-The supply cord cannot be replaced. If the cord is damaged the appliance should be scrapped.

-pollution of the liquid could occur due to leakage of lubricants.

-This appliance shall not be used by children. Cleaning and user maintenance shall not be carried out by children.

-Always disconnect the appliance from the supply before assembling, disassembling or cleaning.

-Appliances can be used by persons with reduced physical, sensory or mental capabilities or lack of experience and knowledge if they have been given supervision or instruction concerning use of the appliance in a safe way and if they understand the hazards involved.

-Children shall not play with the appliance.

-Pumps shall not be left outside during freezing weather conditions.

-The electric installation should follow national wiring rules.

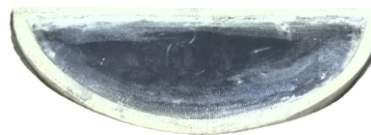
## Assembling & Using Your Product

Unpack all components carefully. Please check to ensure all parts have been removed from the packaging.

### Components:



A. Body of Fountain (1x)



B. Filter Screen(1x)



C. Submersible Pump (1x)



D. Adapter (1x)

### Assembly:

1. Place the Fountain (A) on a smooth, level surface ;
2. Open the white box and remove the Submersible Pump (C) and Adapter (D) from white box ;
3. Put the Filter Screen (B) on the Body of Fountain (A). Then Turn the Fountain Back ;
4. Pull the plastic tube and one electric cord from the back opening of the Fountain(A) ;
5. Then connect the plastic tube to Pump (C) and connect the electric cord with the electric cord from Pump (C).Place the Pump (C) suction feet down into the bottom of the reservoir through the opening at the back of the fountain;
6. Measure the distance between two hooks on the top of fountain, then nail two nails on the wall with the same distances;
7. Carefully fill the fountain with water. We recommend using distilled water to prevent scale build-up.
8. Hang the product on the wall carefully and straighten it.
9. Congratulations, your fountain now is complete. Please plug the power cord for the pump into your local power supply and enjoy!

If you have any questions, please contact our customer care center, Our contact details are below:



0044-800-240-4004



enquiries@mhstar.co.uk

IMPORTER ADDRESS:  
MH STAR UK LTD  
Unit 27, Perivale Park,  
Horsenden lane South  
Perivale, UB6 7RH  
MADE IN CHINA

|                               |     |    |
|-------------------------------|-----|----|
| Input voltage                 | 120 | V  |
| Input AC frequency            | 60  | Hz |
| Output voltage                | 12  | V  |
| Output current                | 0.8 | A  |
| Output power                  | 9.6 | W  |
| Average active efficiency     | 65  | %  |
| Efficiency at low load (10 %) | 55  | %  |
| No-load power consumption     | 2   | W  |