



IN251100143V01_UK

A20-633V00



Outdoor Cassette Stove

This product is a professional outdoor product, please read this instruction carefully before using.

INSTRUCTION MANUAL

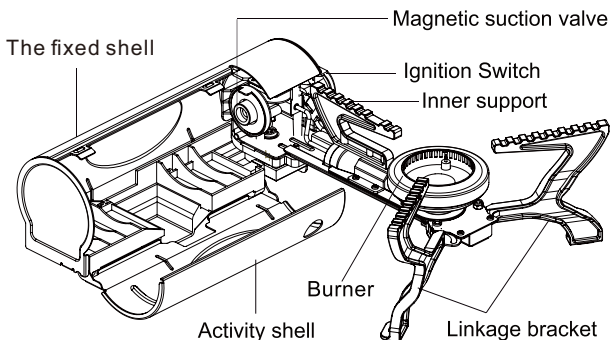
Safety Warning

1. This product is used outdoors or in ventilated environment. It is strictly prohibited to use in tents, cars, rooms or other closed environments.
2. Avoid using in the hot sun or other high temperature environment.
- 3 Stop using immediately if gas leakage is found.
4. The structure of this product is precise, do not transform yourself, so as to avoid danger.
5. It is strictly prohibited to disassemble and install the gas tank when the fire is not extinguished, and it is strictly prohibited to disassemble and install the gas tank near the open fire.
6. Keep away from flammable and explosive materials when using.
7. Do not place the body (pay attention to the head and hands) above the stove when igniting, so as to avoid burns.
- 8.Children under 12 years old should not use this product alone.

Announcements

- 1.Please keep the stove dry, clean and avoid corrosion.
- 2.Discoloration of support and furnace surface is a normal phenomenon during use.
- 3.Keep the connection between valve body and tank clean to avoid airway blockage.
- 4.Use storage must be separated from the stove and gas tank after storage.
- 5.There will be a small amount of gas leakage during the installation and disassembly of the stove and gas tank. Do not install and disassemble in places with open flame or no air circulation.
- 6.The use of magnetic suction overpressure protection valve, when the gas tank overpressure will automatically pop off the air source; When the gas tank pops up, please check whether the stove or environment is abnormal, and reinstall the gas tank after checking no abnormality.
- 7.Do not place POTS beyond the edge of the inner bracket.

Product diagram



Basic parameters

Ignition method: Electronic ignition
Fuel: Long tank (Butagas)
Combustion power: 2670W
Material: Stainless steel, copper, aluminum, nylon

Gas Consumption: 190g/h
Weight: 1.23kg
Unfold Size: 275x80x105mm+ Φ 260x100mm
Fold size: 250x90x105mm
2L water boiling time: 8 minutes 50 seconds

Instructions

1. Open the movable case

Pick up the stove with your left hand, insert your right finger into the round hole (FIG 1.1), and open the movable housing clockwise down. (FIG 1.2)



1.1 Into the round hole



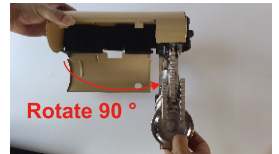
1.2 Open the movable case

2. Turn on the head

- 1) Hold the burners with your right hand and lift them up. (FIG 2.1)
- 2) Expand counterclockwise to the right until it is perpendicular. (FIG 2.2)



2.1 Lift the burner up



2.2 Counterclockwise unfolding

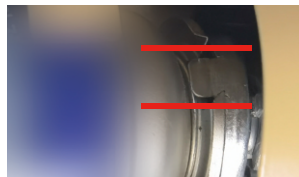
3. Install the tank

Note: Make sure the ignition switch is turned off before installing the tank.

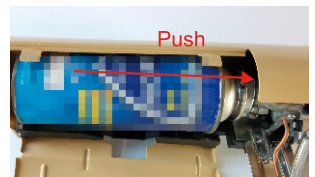
- 1) Put the tank into the card slot and align the tank mouth with the magnetic suction valve. (FIG 3.1)
- 2) The tank notch is aligned with the magnetic suction valve flange. (FIG 3.2)
- 3) Gently push in to stabilize the tank and valve. (FIG 3.3)



3.1 Align magnetic suction valve



3.2 Align magnetic suction valve bay



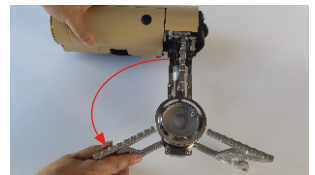
3.3 Push it in gently

4. Open the stent

- 1) Close the movable shell. (FIG 4.1)
- 2) Slightly lift the linkage bracket, open either side of the bracket, the other bracket will be expanded synchronously. (FIG 4.2)



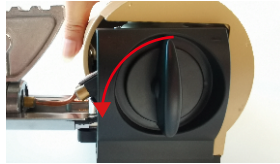
4.1 Close the movable shell



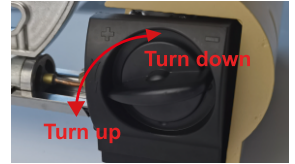
4.2 Expand the linkage support

5. Ignite and burn

- 1) Turn the ignition counterclockwise, hear a "click" to ignite, and let go of the flame. (FIG 5.1)
- 2) Slowly adjust the switch to control the firepower. (FIG 5.2)



5.1 Contrarotate



5.2 Adjust the fire

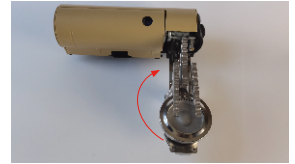
Note: please confirm whether there is air leakage before ignition, and stop ignition immediately if there is an odor (onion smell).

6. Extinction

Turn the switch clockwise until it is turned off. (FIG 6.1)



6.1 Close clockwise



7.1 Close the bracket

7. Close the bracket

- 1) After cooling, slightly lift the linkage bracket, arbitrarily close one bracket, the other bracket will be synchronized close. (FIG 7.1)

8. Remove the tank

Gently pull out the tank and take it out.

9. Turn the burner back

Gently lift the stove head and turn clockwise to the fixed housing, and cover the movable housing.

Optional accessories

Heat Spreaders

Such as in low temperature state, can connect the heat conduction sheet inner bracket and the surface of the gas tank, can increase the temperature of the gas tank about 9°C, prevent the gas tank temperature is too low to lead to insufficient fuel vaporization, combustion power is small.



Connect the inner bracket to the tank surface



Position for storing thermal conductive plates

UK

If you have any questions, please contact our customer care center.

Our contact details are below:



0044-800-240-4004



enquiries@mhstar.co.uk

IMPORTER ADDRESS:
MH STAR UK LTD
Unit 27, Perivale Park,
Horsenden lane South
Perivale, UB6 7RH
MADE IN CHINA