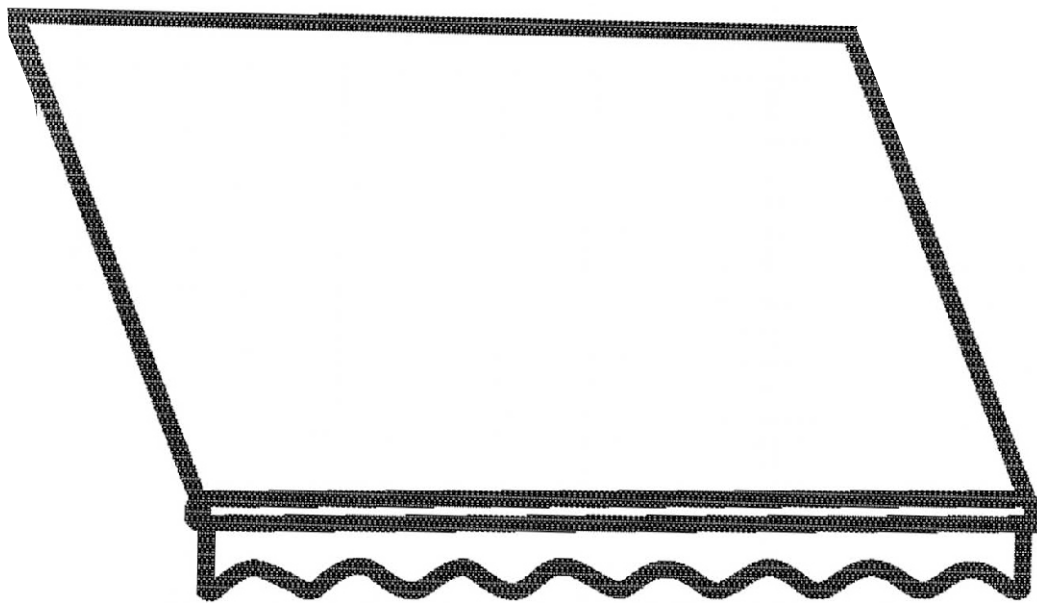




IN241200163V01_GL

840-274V00_840-274V01



EN_Tips:Please do not use in bad weather to avoid damage.

FR_Conseils : Ne pas utiliser par mauvais temps afin d'éviter tout dommage.

ES_Consejos:No utilizar con mal tiempo para evitar daños.

PT_Dicas: Não utilizar com mau tempo para evitar danos.

DE_Tipps:Bitte nicht bei schlechtem Wetter verwenden, um Schäden zu vermeiden.

IT_Suggerimenti: non utilizzare in caso di maltempo per evitare danni.



EN_IMPORTANT, RETAIN FOR FUTURE REFERENCE: READ CAREFULLY.

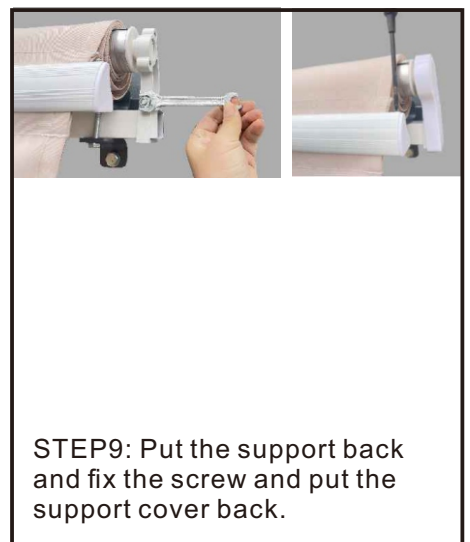
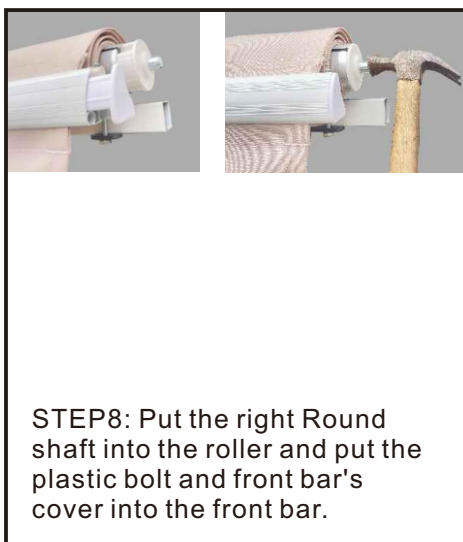
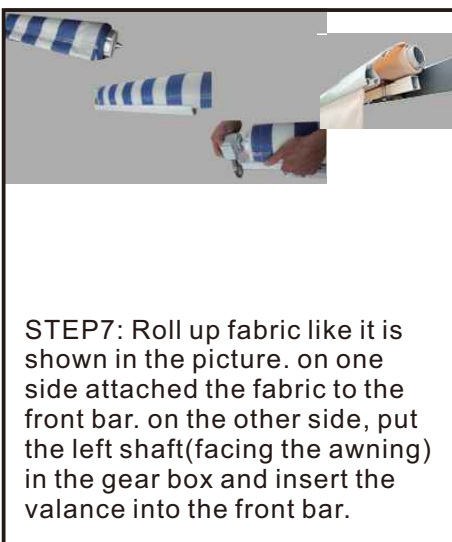
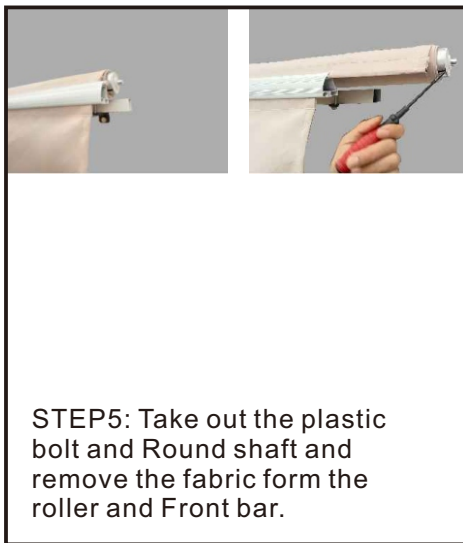
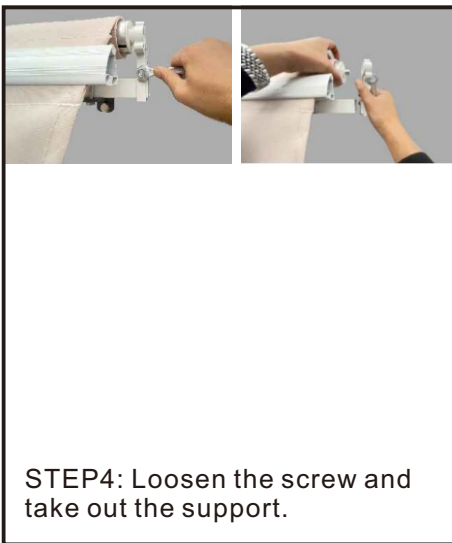
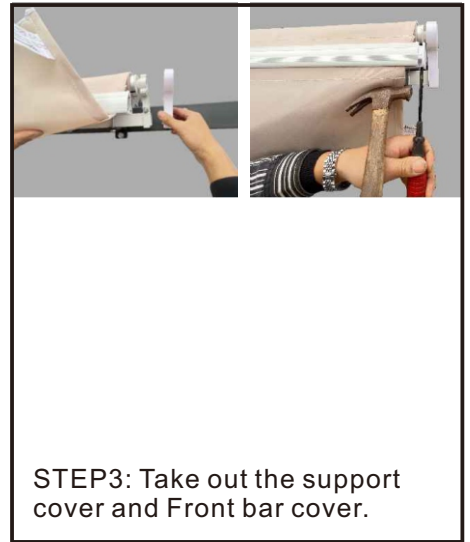
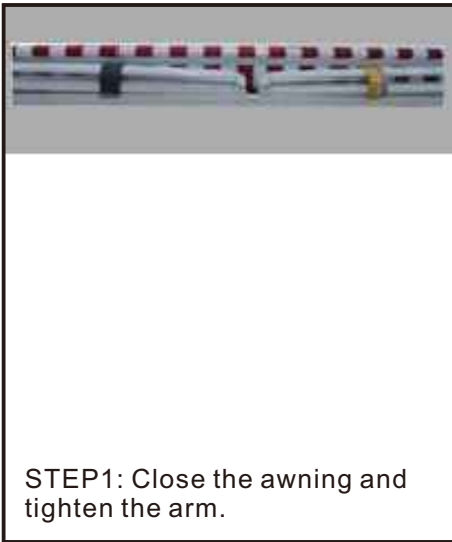
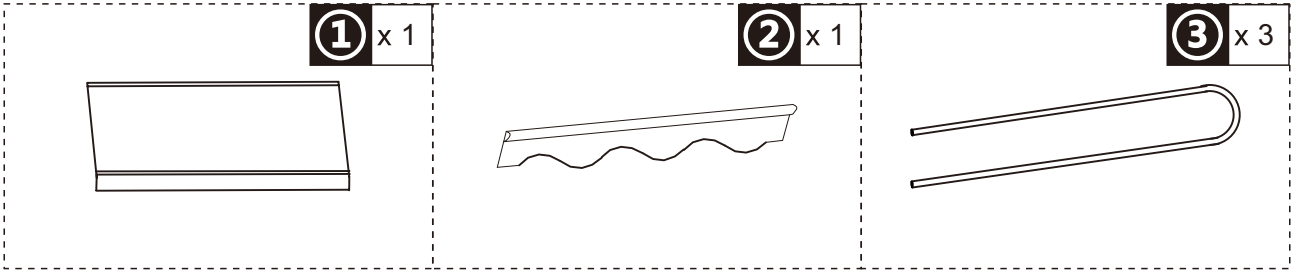
FR_IMPORTANT: A LIRE ATTENTIVEMENT ET À CONSERVER POUR CONSULTATION ULTÉRIEURE.

ES_IMPORTANTE, LEA Y GUARDE PARA FUTURAS REFERENCIAS.

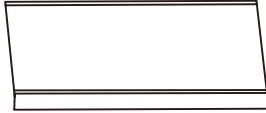
PT_IMPORTANTE, RETER PARA REFERÊNCIA FUTURA: LEIA ATENTAMENTE.

DE_WICHTIG! SORFGFÄLTIG LESEN UND FÜR SPÄTERES NACHSCHLAGEN AUFBEWAHREN.

IT_IMPORTANTE! CONSERVARE IL PRESENTE MANUALE PER FUTURO RIFERIMENTO E LEGGERLO ATTENTAMENTE.



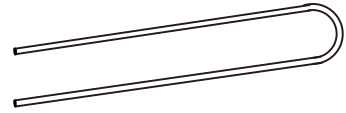
① x 1



② x 1



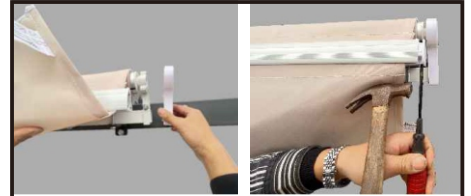
③ x 3



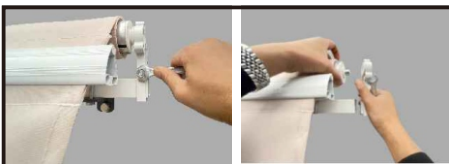
ÉTAPE 1 : Fermez le store et serrez le bras.



ÉTAPE 2 : Desserrer la vis.



ÉTAPE 3 : Retirez le couvercle du support et le couvercle de la barre frontale.



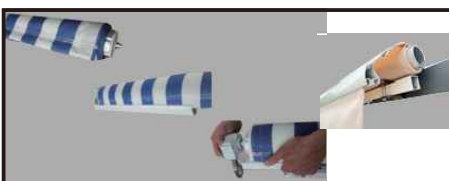
ÉTAPE 4 : Desserrer la vis et retirer le support.



ÉTAPE 5 : Retirez le boulon en plastique et l'arbre rond, puis retirez le tissu du rouleau et de la barre frontale.



ÉTAPE 6 : Retirez la ligne de tissu sur l'ancien tissu et insérez la doublure dans le nouveau tissu.



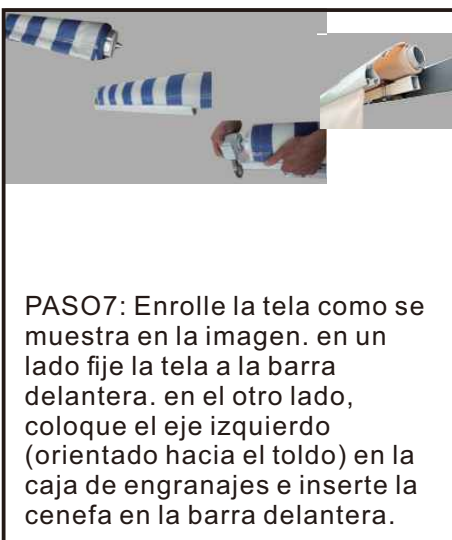
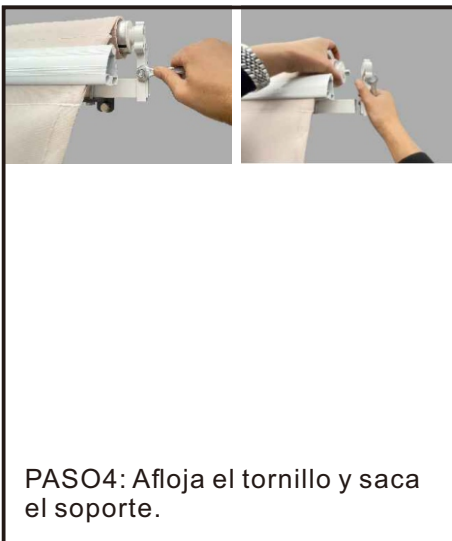
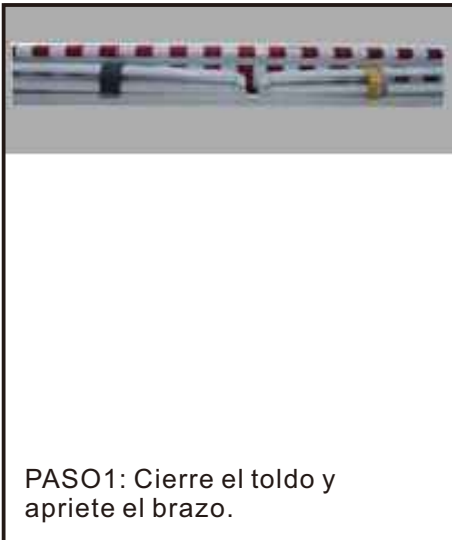
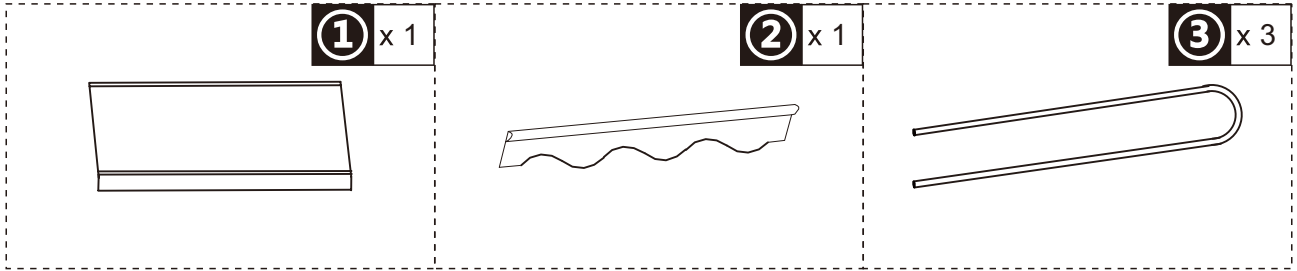
ÉTAPE 7 : D'un côté, attachez le tissu à la barre avant. De l'autre côté, placez l'arbre gauche (face à l'auvent) dans la boîte de vitesse et insérez la cantonnière dans la barre avant.



ÉTAPE 8 : Insérez l'arbre rond droit dans le rouleau et insérez le boulon en plastique et le couvercle de la barre frontale dans la barre frontale.



ÉTAPE 9 : Remettre le support en place, fixer la vis et remettre le couvercle du support en place.



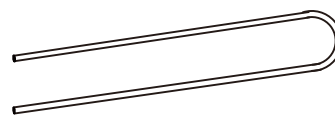
① x 1



② x 1



③ x 3



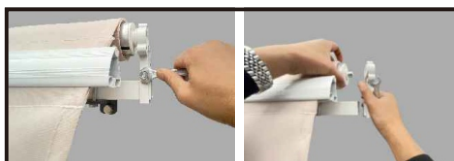
PASSO 1: Fechar o toldo e apertar o braço.



PASSO2: Desapertar o parafuso.



PASSO 3: Retirar a tampa do suporte e a tampa da barra dianteira.



PASSO4: Desapertar o parafuso e retirar o suporte.



PASSO 5: Retirar o parafuso de plástico e o eixo redondo e retirar o tecido do rolo e da barra frontal.



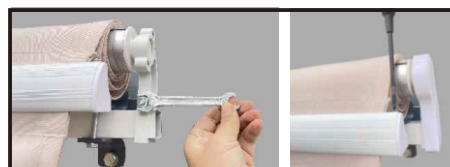
PASSO 6: Retirar a linha de tecido do tecido antigo e inserir o forro de tecido no tecido novo.



PASSO 7: Enrolar o tecido como se vê na imagem. De um lado, fixar o tecido à barra dianteira. Do outro lado, colocar o eixo esquerdo (virado para o toldo) na caixa de velocidades e inserir a saia na barra dianteira.



PASSO8: Colocar o eixo redondo direito no rolo e colocar o parafuso de plástico e a tampa da barra dianteira na barra dianteira.



PASSO9: Voltar a colocar o suporte, fixar o parafuso e voltar a colocar a tampa do suporte.

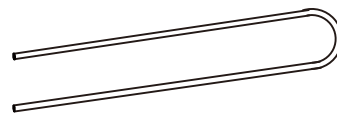
① x 1



② x 1



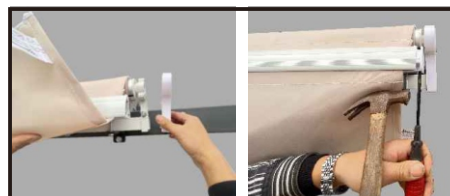
③ x 3



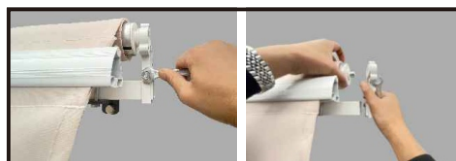
SCHRITT 1: Schließen Sie die Markise und ziehen Sie den Arm fest.



SCHRITT 2: Lösen Sie die Schraube.



SCHRITT 3: Nehmen Sie die Abdeckung der Halterung und die Abdeckung der vorderen Stange heraus.



SCHRITT 4: Lösen Sie die Schraube und nehmen Sie die Halterung heraus.



SCHRITT 5: Nehmen Sie den Kunststoffbolzen und die runde Welle heraus und entfernen Sie den Stoff von der Rolle und der vorderen Stange.



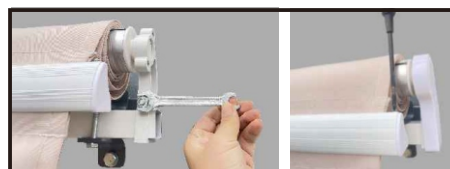
SCHRITT 6: Ziehen Sie die Stofflinie auf dem alten Stoff heraus und legen Sie die Stoffeinlage in den neuen Stoff ein.



SCHRITT 7: Rollen Sie den Stoff auf, wie in der Abbildung gezeigt. Befestigen Sie den Stoff auf der einen Seite an der vorderen Stange. Auf der anderen Seite setzen Sie die linke Welle (in Richtung der Markise) in den Getriebekasten und stecken Sie den Volant in die vordere Stange.



SCHRITT 8: Setzen Sie die rechte runde Welle in die Walze ein und setzen Sie den Kunststoffbolzen und die Abdeckung der vorderen Stange in die vordere Stange ein.



SCHRITT 9: Bringen Sie die Stütze wieder an, befestigen Sie die Schraube und bringen Sie die Stützenabdeckung wieder an.

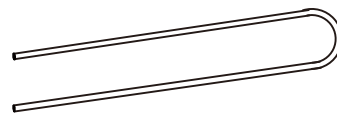
① x 1



② x 1



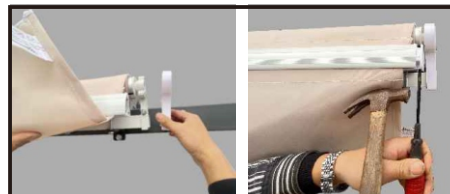
③ x 3



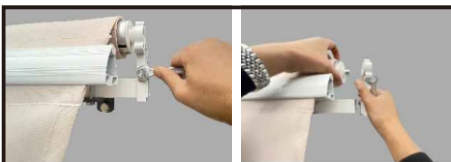
FASE1: Chiudere la tenda e stringere il braccio.



FASE2: Allentare la vite.



FASE3: Estrarre il coperchio del supporto e il coperchio della barra anteriore.



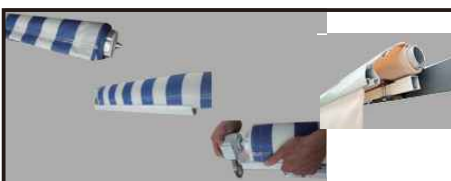
FASE4: Allentare la vite ed estrarre il supporto.



FASE5: Estrarre il bullone di plastica e l'albero rotondo e rimuovere il tessuto dal rullo e dalla barra anteriore.



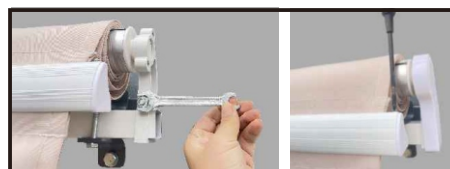
FASE6: Togliere la linea di tessuto sul vecchio tessuto e inserire la fodera di tessuto nel nuovo tessuto.



FASE7: arrotolare il tessuto come mostrato nella foto. da un lato fissare il tessuto alla barra anteriore. dall'altro lato, inserire l'albero sinistro (rivolto verso la tenda) nella scatola degli ingranaggi e inserire la mantovana nella barra anteriore.



FASE8: Inserire l'albero circolare destro nel rullo e inserire il bullone di plastica e la copertura della barra anteriore nella barra anteriore.



FASE9: Riportare il supporto, fissare la vite e rimettere il coperchio del supporto.

If you have any questions, please contact our customer care center, Our contact details are below:

US


 001-877-644-9366

 customerservice@aosom.com

Imported by Aosom LLC
27150 SW Kinsman Rd Wilsonville, OR 97070 USA
MADE IN CHINA

If you have any questions, please contact our customer care center, Our contact details are below:


CA

 416-792-6088

 customerservice@aosom.ca

Imported by Aosom Canada Inc.
7270 Woodbine Avenue, Unit 307, Markham,
Ontario Canada L3R 4B9
MADE IN CHINA

Si vous avez la moindre question, veuillez contacter notre centre d'assistance à la clientèle, Nos coordonnées sont les suivantes:

 416-792-6088

 customerservice@aosom.ca

Importé par Aosom Canada Inc.
7270 Woodbine Avenue, unité 307,
Markham, Ontario Canada L3R 4B9
FABRIQUÉ EN CHINE

If you have any questions, please contact our customer care center, Our contact details are below:

UK


 0044-800-240-4004

 enquiries@mhstar.co.uk

IMPORTER ADDRESS:
MH STAR UK LTD
Unit 27, Perivale Park,
Horsenden lane South
Perivale, UB6 7RH
MADE IN CHINA

Si vous avez la moindre question, veuillez contacter notre centre d'assistance à la clientèle, Nos coordonnées sont les suivantes:

FR

 0033-1-84166106

 aosom@mhfrance.fr

Importé par/Fabricant/REP:
MH FRANCE
2 Rue Maurice Hartmann
92130 Issy Les Moulineaux
France
FABRIQUÉ EN CHINE

Wenn Sie Fragen haben, wenden Sie sich bitte an unser Kundendienstzentrum, Unsere Kontaktdaten stehen unten:

DE


 0049-0(40)-88307530

 service@aosom.de

ADRESSE DES IMPORTEURE/Hersteller/REP:
MH Handel GmbH
Wendenstraße 309
D-20537 Hamburg
Germany
IN CHINA HERGESTELLT

In caso di dubbio, si prega di contattare il nostro centro assistenza clienti, I nostri dettagli di contatto sono di seguito:

IT


 0039-0249471447

 clienti@aosom.it

IMPORTATO DA/Produttore/REP:
AOSOM Italy srl
Centro Direzionale Milanofiori
Strada 1 Palazzo F1
20057 Assago (MI)
P.I.: 08567220960
FATTO IN CINA

Si tiene alguna pregunta, comuníquese con nuestro Centro de Atención al Cliente, Nuestros datos de contacto son los siguientes:

ES


 0034-931294512

 atencioncliente@aosom.es

IMPORTADOR/Fabricante/REP:
SPANISH AOSOM, S.L.
C/ROC GROS, N°15.08550, ELS HOSTALETES DE
BALENYÀ, SPAIN.
B66295775
HECHO EN CHINA

Se tiver alguma dúvida, por favor contacte o nosso Centro de Atendimento ao Cliente, Os nossos dados de contacto são os seguintes:

PT

 0034-931294512

 info@aosom.pt.

IMPORTADOR/Fabricante/REP:
SPANISH AOSOM, S.L.
C.ROC GROS N.15, 08550. ELS HOSTALETES DE
BALENYÀ
FEITO NA CHINA



FR

**DONNEZ
OU
RECYCLEZ**



ASSOCIATION

OU



LIVRAISON

OU



DÉCHÈTERIE

Adresses sur quefairedemesdechets.fr