

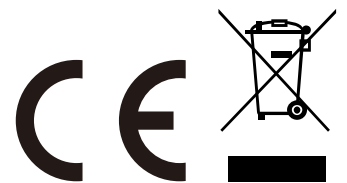


IN241000576V01_UK

824-110V70



AIR CIRCULATOR



EN_IMPORTANT, RETAIN FOR FUTURE REFERENCE: READ CAREFULLY.

WARNING

- Do not let the wind inlet be too close to the wall , curtain and so on , or it will block the air flow and affect the wind effect.
 - Using it the first time, please check if your voltage is accord with the nameplate for air cooler.
 - Before use, please check if the power cord and plug are breakage, Do not the power plug twisted and turned in order to avoid poor contact
 - If the power cord is damaged ,it must be replaced by the manufacturer, its service agent or similarly qualified persons in order to a hazard.
 - Do not cover the outlet , and keep the air fan away from the socket .You must choose the socket which it is up to more than 10A current , and do not use the same socket with other machine .
 - When air cooler is working, absolutely forbid hand or foreign body inserting the network (specially pay attention to children)
 - The appliance is not intended for use by persons (including children) with reduced physical, sensory or mental capability, or lack of experience and knowledge, unless they have been given supervision or instruction concerning use of the appliance by a person responsible for their safety.
 - Children should be supervised to ensure that they do not play with the appliance .
 - Please turn off the power before pulling out the plug . Do not pull the power cord and do pull the power plug in order to avoid a short-circuit, fire, electric shock.
 - Do not pull the power plug by wet hand in order to avoid the risk of electric shock.
 - Please pull the plug away from the socket when you do not use it .
 - Please do not put the working Air Circulator on the declining position or not smooth position.
 - Please do not work Air Circulator when it is outdoors, or around bath(or shower, or pool).
- I - Please do not put anything on air circulator .
- Mustn't cover the outlet and inlet of air circulator.

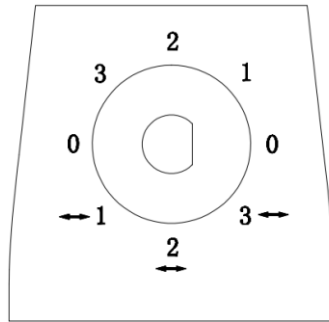
Dear customer

We thank you for purchasing our Air Circulator and kindly ask you to read and save this instruction manual carefully.

Function Control Panel

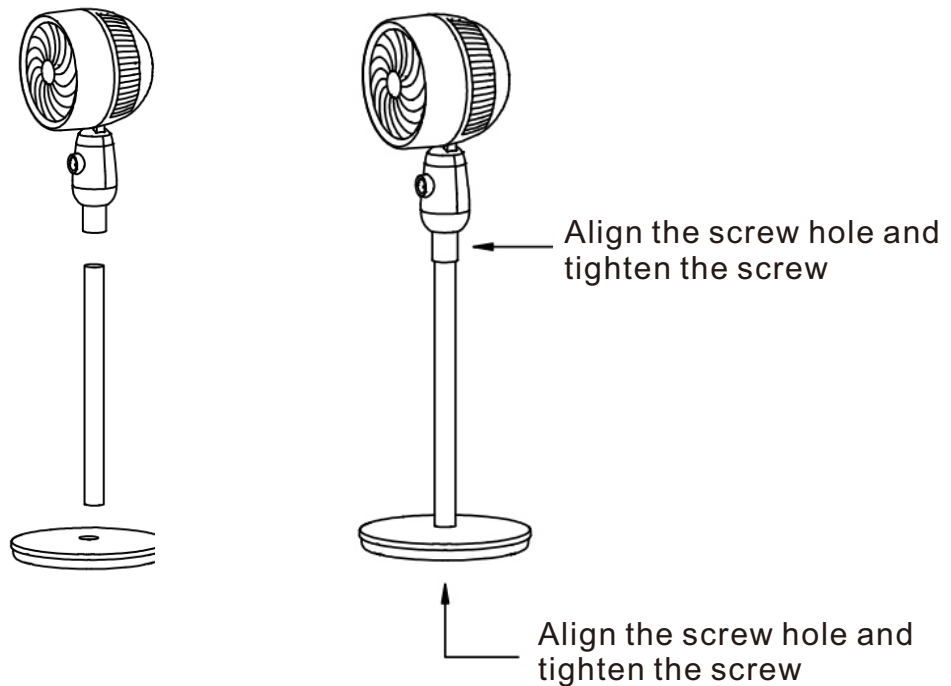
ON/OFF (Speed) Switch

- After plug the power cord, the buzzer responds a sound.
- Turn on switch to “1”, air circulator is working with low speed .
- Turn on switch to “2”, air circulator is working with medium speed.
- Turn on the switch to “3”, air circulator is working with high speed .
- Turn the switch to “0” position to switch off the air circulator.



Swing switch

- Turn on switch to “1 ↔”, air circulator is working with low speed , and it will be left and right swing.
- Turn on switch to “2 ↔”, air circulator is working with low speed , and it will be left and right swing.
- Turn on switch to “3 ↔”, air circulator is working with low speed , and it will be left and right swing.
- The air circulator can manual swing up and down.



Installation diagram

Unscrew the two screws on the post and attach the post to the chassis and machine.

TECHNICAL SPECIFICATIONS:

Model No.	BL-XHS-1J
Electric Current (A)	0.18A
Rated Voltage (V)	127V
Rated Frequency (Hz)	60Hz
Rated power (W)	40W
Dimensions(mm)	L31*W31*H91
Netweight (kg)	2.40kg
Protective Class	II

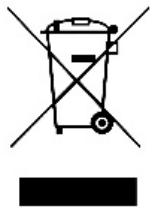
Clean the housing :

- Wipe off the housing by neutral cleaner and soft cloth.

Important :

- **When clean the air circulator , the client must pull off the plug and cut off the power while any part of control panel cannot be into water.**

RECYCLING (DISPOSAL OF THE PRODUCT AT THE END OF ITS LIFE):



The crossed-out wheeled bin symbol indicates that the item should be disposed of separately from household waste. The item should be handed in for recycling in accordance with local environmental regulations for waste disposal. By separating a marked item from household waste, you will help reduce the volume of waste sent to incinerators or land-fill and minimize any potential negative impact on human health and the environment.

UK

If you have any questions, please contact our customer care centre.

Our contact details are below:



0044-800-240-4004



enquiries@mhstar.co.uk

IMPORTER ADDRESS:

MH STAR UK LTD

Unit 27, Perivale Park,

Horsenden lane South

Perivale, UB6 7RH

MADE IN CHINA