

Candeo Zigbee Switch Module C205



Please read all of the instructions prior to installation

Safety Warnings

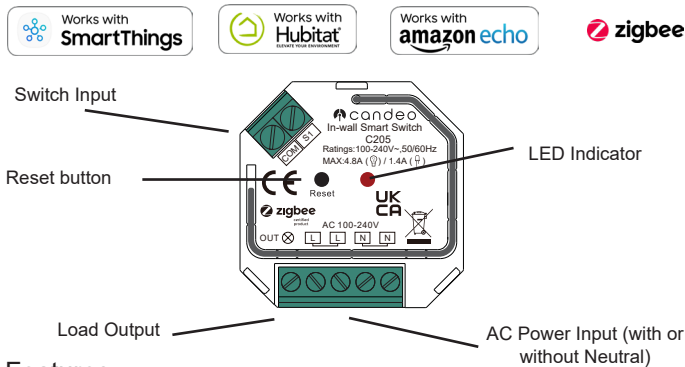
- Turn Off Mains Power before installing the device
- Do not expose the device to moisture
- Do not open the case of the switch

Notes

- Can be used with or without a Neutral wire for a 2-wire or 3-wire system
- Works with toggle switches
- Active element: semiconductor electronic switch,
- To be installed in wall switch boxes or elsewhere on the circuit
- The bypass in the illustrations is an optional extra that can resolve issues if used with a 2-wire system

Installation

1. Turn off the power.
 - i. To avoid electrical shock and/or equipment damage, disconnect electrical power at the main fuse or circuit breaker before installation and maintenance
 - ii. Be aware that even if the circuit breaker is off, some voltage may remain in the wires — before proceeding with the installation, be sure no voltage is present in the wiring.
 - iii. Take extra precautions to avoid accidentally turning the device on during installation.
2. Connect the device according to the diagrams shown below for either a 2-wire system or 3-wire system.



Features

- Zigbee 3.0 - In Wall Smart Switch
- Compatible with Smarthings, Hubitat, Home Assistant plus others
- Compatible with Alexa and Google Assistant if your zigbee hub supports it
- 100-240VAC Wide Input and Output Voltage
- 1 channel output, max. load up to 4.8A
- Works with 2-way physical switches
- Supports resistive and capacitive loads
- Module can be paired directly to a Touchlink remote without a hub or bridge
- Supports Find and Bind mode for Zigbee remotes
- Supports zigbee green power feature and can bind with a maximum of 20 zigbee green power remotes
- Radio Frequency : 2.4GHz
- Waterproof grade: IP20

Specifications

Input Voltage	100V-240VAC
Output Voltage	100V-240VAC
Output Current	Resistive load: max. 4.8A Capacitive/Inductive load: max. 1.4A
Dimensions	45.5mm x 45mm x 20mm

Wiring - 2 wire (without Neutral)

In the diagrams below, the switch is optional as the modules can be used with smart control only if desired.

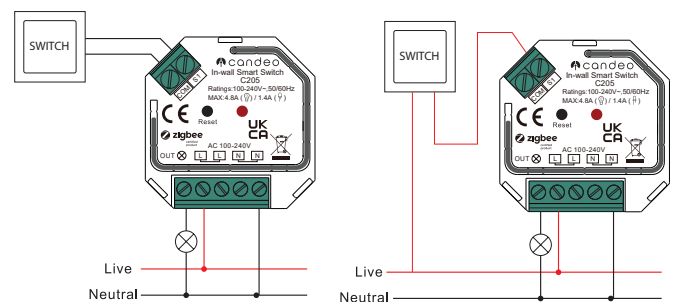
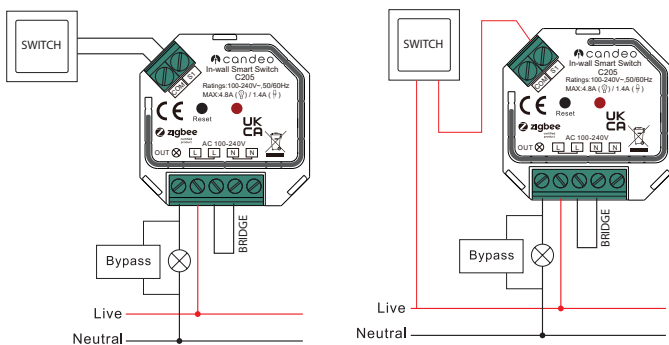
In the 2 wire system, the bypass and bridge are both optional although performance is likely to be improved with both installed.

- L - terminal for Live lead
- N - terminal for neutral lead
- Out - output terminal to light.

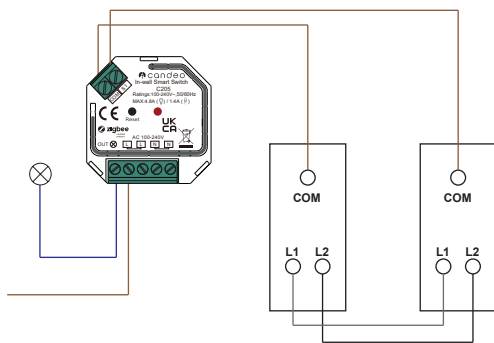
Wiring - 3 wire (with Neutral)

In the diagrams below, the switch is optional as the modules can be used with smart control only if desired.

- L - terminal for Live lead
- N - terminal for neutral lead
- Out - output terminal to light.






Wiring a 2-way system



Pairing to your zigbee hub/bridge

1. Factory Reset
 - i. After powering on the module for the first time, the lamp should blink. If it does not blink, you will need to factory reset the device.
 - ii. To do this, press the reset button 5 times. Or, if the module is not accessible, switch the power off and on 5 times.
 - iii. The lamp will blink 3 times to indicate a successful factory reset.
2. Add the module to your Zigbee hub or bridge
 - i. Please refer your smart hub app to add a device to the zigbee network.
 - ii. After scanning for a new device, your hub will identify the module, and the lamp will blink 5 times and then stay on to indicate successful pairing.
 - iii. If the hub does not successfully pair with the module, power the module off and power on, and try again within 15 seconds of powering on.

Supported Loads

Supported Load Types		100-240V~	
	Resistive Loads Conventional incandescent and halogen lights	20-1000W @ 230V 20-500W @ 110V	
	Capacitive Loads Fluorescent tube lamps, electronic transformer, LED	With Bypass 3-300W @ 230V 3-150W @ 110V	Without Bypass 20-300W @ 230V 20-150W @ 110V
	Inductive Loads Ferromagnetic transformers	20-300W @ 230V 20-150W @ 110V	

Advanced Zigbee options

1. Set up Touchlink - if you have a Touchlink capable remote
 - i. Press the reset button 4 times (or turn the power off/on 4 times) to start Touchlink commissioning.
 - ii. Bring the remote within 10cm of the module and set the remote into Touchlink commissioning mode. You will need to refer to the instructions that came with the remote to do this.
 - iii. The light will flash twice when Touchlink pairing has been successful.

Please Note

- i. When both devices (switch module and remote) are not included in a Zigbee network, each module can connect with up to 1 remote control.
- ii. When both devices are included in the same Zigbee network, each dimmer can connect with up to 30 remote controls.
- iii. To control within your smart ecosystem and Touchlink remote, first add the remote and the device to network, and then begin Touchlink pairing.

2. Find and Bind

- i. Make sure that both the module and the remote are already paired to the same zigbee network.
- ii. Press the reset button 3 times (or turn the power off/on 3 times) to start Find and Bind mode.
- iii. Bring the remote or touch panel within 10cm of the module.
- iv. Set the remote or touch panel to Find and Bind mode. You will need to refer to the instructions that came with the remote to do this.
- v. There will be an indication on the remote that Find and Bind mode has been successfully established.

Trouble shooting and further support

Please ensure that you have followed all of the instructions precisely.

The module will not pair with the hub

- i. Please ensure that your hub is in range, typically <30m indoors.
- ii. Please do a factory reset as outlined above, and try pairing again.
- iii. Please ensure that you have not exceeded the maximum amount of devices allowed for your hub.

To remove the module from the zigbee network

- i. Remove the device from your Zigbee network by following the instructions in your smart app
- ii. Press the reset button 5 times
- iii. The connected lights will blink 3 times.

For any further support please visit www.candeo.io



Instructions version: 2311.1

