

User Manual of Panel Heater with Built-in WIFI and Remote Thermostat

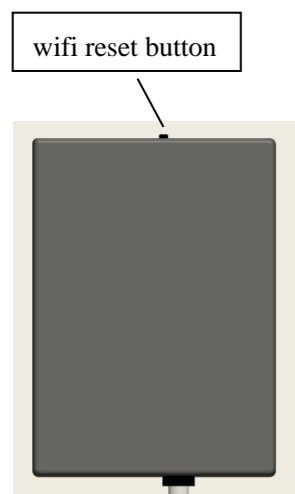
I. Product Description

Internal WIFI thermostat are normally built in A , F and G series panel heaters, controlled by mobile phone through internet, function includes,

- WIFI remote control
- remote control
- temperature adjust
- weekly programme on/off and temperature setting
- count down power off
- group control
- share to other users

It works with a remote-controller which acquires room temperature and transmit signal to the heater receiver. This remote-controller has a LCD screen which can display current room temperature.

II. Technical Data of Internal Receiver



Receiver at the rear of the heater

1. Power Supply: AC220-240V
2. Wireless standard: IEEE802.11b/g/n
3. Frequency range: 2.412~2.484GHz
4. Security mechanism: WEP/WPA-PSK/WPA2-PSK
5. Encryption type: WEP/TKIP/AES
6. Standby power consumption: <0.8W
7. Working environment: temperature -5 ~ 50 ° C; humidity 10% -95%.

III. Technical Data of remote-controller

1. Power supply: DC3V (2*1.5V AAA batteries, not included)
2. Power consumption: 3V 0.1mA
3. Temperature setting range: 0°C~45°C
4. Temperature display range: 0°C~50°C
5. Maximum work distance: <8 meters
6. Dimension: 140mm×40mm×18mm
7. Weight: 40g

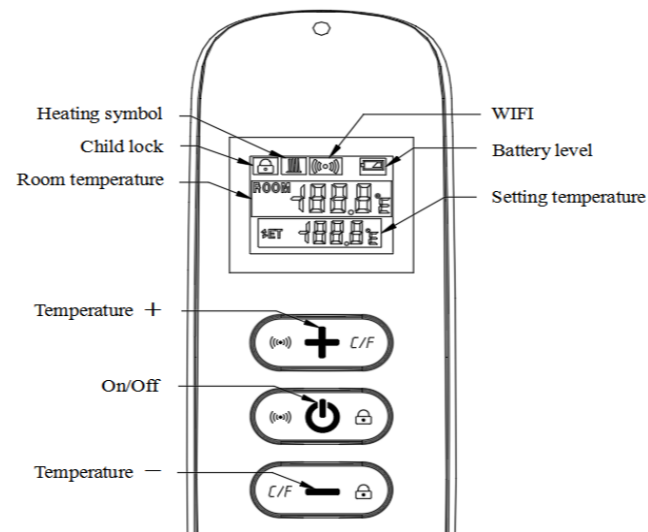
IV. Function of remote-controller

1. Built in receiver and remote-controller constitute the temperature control system;
2. The remote-controller is powered by 2pcs of 1.5V AAA battery. Please change with new batteries if the battery symbol gets flashing, or else the remote will not be able to control the heaters.
3. The remote-controller acquires the room temperature through the sensor on the top, and send real-time temperature data to the receiver.
4. The screen can display the room temperature, setting temperature, child lock, battery level etc.
5. The remote-controller has the functions of switching

heater on/off, setting temperature, temperature conversion, child lock etc.

6. When the screen of the remote-controller is off, it only means that the heater is off, and it does not mean that the remote-controller has stopped working. It is still detecting real-time temperature data and sending the real-time temperature data to the receiver every 60s for logical control (the remote-controller will send the collected temperature data whether it is on or off).
7. One remote-controller can be paired with several heaters, users can pair them one by one or at same time together, both ways are workable.

V. Instructions of remote-controller operation



Remote-controller

1. Power on the heater , press " ⏻ " and "+" simultaneously within five minutes to pair the remote-controller with heater. (📶) symbol will flash with **one beep sound heard from heater**.

Note: 1. Please turn off the heaters that you do not want to be paired before pairing .

2. If the remote control needs to be replaced, please power on the heater again, and then complete the pairing within five minutes. If the pairing is not finished within five minutes, the pairing mode will be off and users will need to repeat the above steps to pair again.

2. Press " ⏻ " to turn on the heater, and press again to turn off the heater.
3. Press key "+" to increase the set temperature by 1°C, press key "-" to decrease the set temperature by 1°C, and hold key "+" or key "-" for 3 seconds to increase or decrease the set temperature continuously.
4. Press key "+" and key "-" simultaneously to convert the temperature unit between °C and °F.
5. Press key " ⏻ " and key "-" simultaneously for 3 seconds to turn on child lock mode; To unlock, repeat the steps above.
6. SET symbol on screen means the target setting temperature.
 - 1) If the set temperature is below room temperature, heating device is now OFF.
 - 2) If the set temperature is above room temperature, the thermostat goes ON and heating symbol 🔥 appears on the screen.
 - 3) Every time you press the button, the screen background will light up, and it will be off if no operation within 5 seconds.

VI. Instructions of WIFI Connection

1. Before pairing, please make sure your mobile phone connects to your 2.4ghz WIFI signal invariably.
2. Scan and install below Smart Life APP, and Register an account.



finished APP icon



3. **Long press wifi reset button 5-10s or repeat powering on/off the heater 4 times by plug until red indicator light at the front corner blinks.**
NOTE: same operation is necessary when WiFi hotspot changed, WiFi password changed, or cell phone changed..

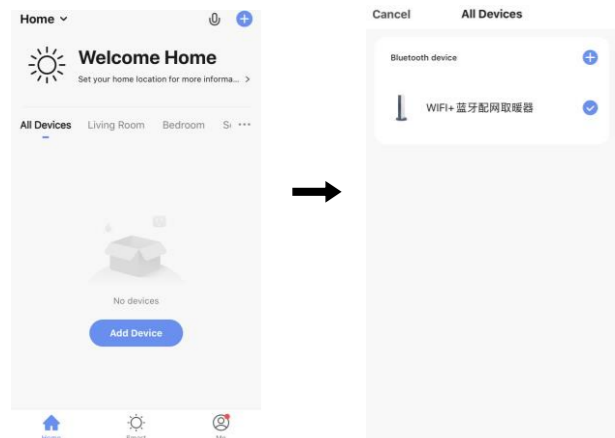
corner (or at the rear electric box)indicator light with red and blue colors



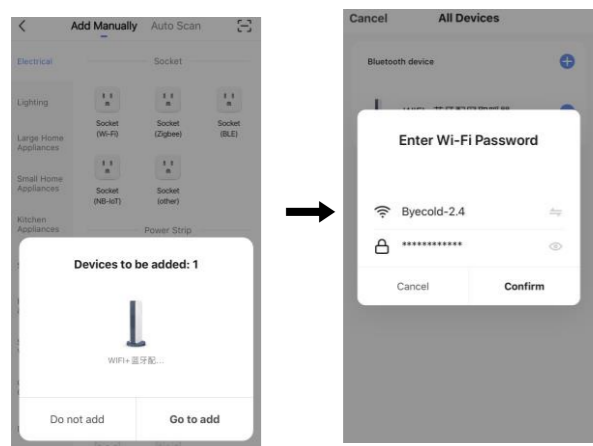
Red color means online

Blue color means heater powering on

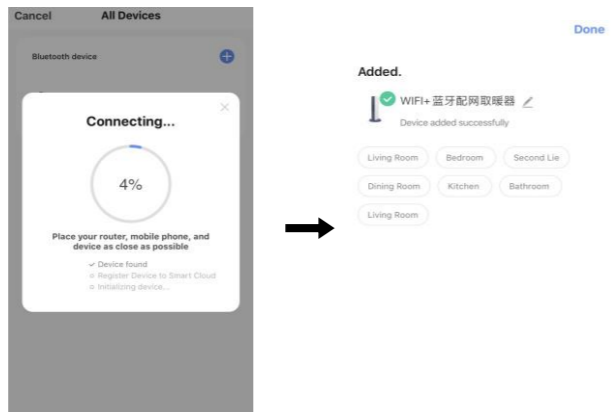
4. Click Smart Life App to enter main interface, Select room name and click "Add Device" or the upper right corner " ⊕ " icon. A pop-up window appears as below picture.



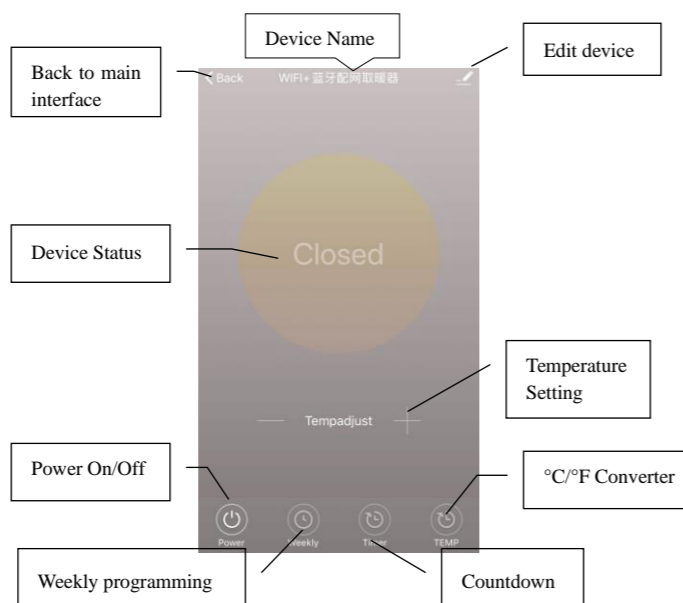
- Click “Go to add”. In next page click “+” to add a bluetooth device, and a Enter Wi-Fi Password dialog will pop-up as following.



- Enter Wi-Fi password, click “Confirm”, It will automatically enter the next step for WIFI connection. The device will be added successfully after waiting for 20-30 seconds. And meantime the red indicator at the front corner of heater lights up. You can name this device, e.g. “Infrared panel heater”.

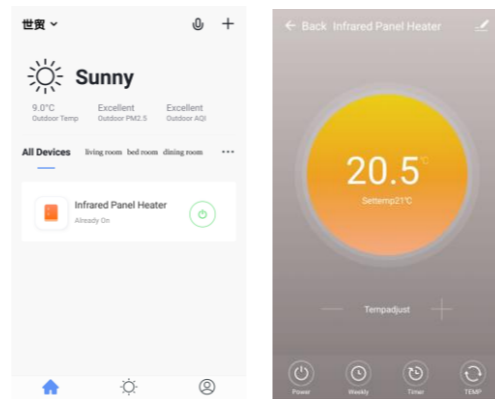


Note: If the connection is timed out in Step 6, please Repeat Step 3-6.



VII. Operation Instructions

- Main view of the Smart Life APP after heater connected successfully as below.



- Click the green to turn on/off the power supply of the heater, blue indicator on heater panel lighting up means the heater has been powered on.
- Click device name “infrared panel heater” to enter the interface of the device.
- means turning on/off the power supply of the heater, setting temperature should be also at least 0.5 °C higher than room temperature if you want the heater to be powered on.
- means weekly programming mode. Under weekly mode, users can program the heater to change the operation and desired temperature throughout the week. ON and OFF timing is separate, you need to add individually. Don't forget to turn ON the weekly button to Green after programming.. *Note: weekly will still work as per setting even under APP powering off state.*
- is countdown function for setting to power off the heater. *Note: APP powering off will cause timer setting canceled.*
- means convert temperature display between °F and °C *Note: Weekly, Timer and TEMP these three functions can be edited only under power on mode!*
- means other editing of the heater, description

as below.

- Device name: edit the thermostat name.
- Device information: to check the virtual ID etc device information.
- Share device: you can share the control of this thermostat to other mobile numbers/email addresses if they have been registered in “Smart Life” APP.
- Create Group: you can group different thermostats to control together.
- FAQ & Feedback: to report any problems to the APP supplier.
- Add to the home interface: you can turn on the heater directly on the home interface.
- Check Device network: check the wifi connection status of device.
- Check Update: Get latest firmware version.
- Remove Device: remove thermostat from your APP.

VIII. Important note

- The heater only support 2.4GHz network.
- Red light means the heater is online, blue light means the heater is powering on.
- If long press wifi reset button 5-10s or repeat powering on/off the heater 4 times by plug, internal WiFi connecting information will be cleared, you need to connect WiFi again.
- WiFi or network disconnected will cause heater offline and heater powering off.
- The blue LED indicator may not light up at the first time when you finished the WIFI connecting, you need to wait for a couple of seconds due to network searching and connecting.
- Alkaline battery is recommended for the remote

- controller. Please remove the battery if long time no use.
- If the remote can not turn on the heater, please check if the setting temperature is below the room temperature.
- Put the remote-controller at most 8 meters from the heater. Do not mount the remote-controller close to any cold or heat source; Do not cover the remote-controller; Do put it in an open normal room environment rather not inside a drawer/pocket etc, or under pillow/quilt etc.
- Do not use heaters in wet or running water environment.
- Please pull out the heater power supply from your socket if long time no use.
- Both the remote-controller and App can turn on/off the heater and set the temperature. The remote-controller setting can be linked to the App, but the App setting cannot be linked to the remote-controller.
- If the connection between remote and the built in receiver breaks and the temperature data can't be received for 5 minutes, the APP will display --., and the heater will stop heating. Meanwhile, the mobile will get a warning message. If the connection is done again, the APP will display real room temperature.
- If the remote-controller is disconnected, please bring the remote-controller close to the heater(less than 3 meters) and re-pair.
- If the remote-controller is always disconnected at one location, move it somewhere else.