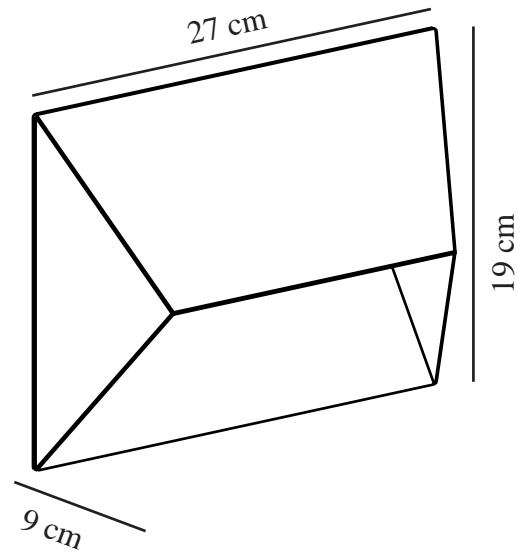
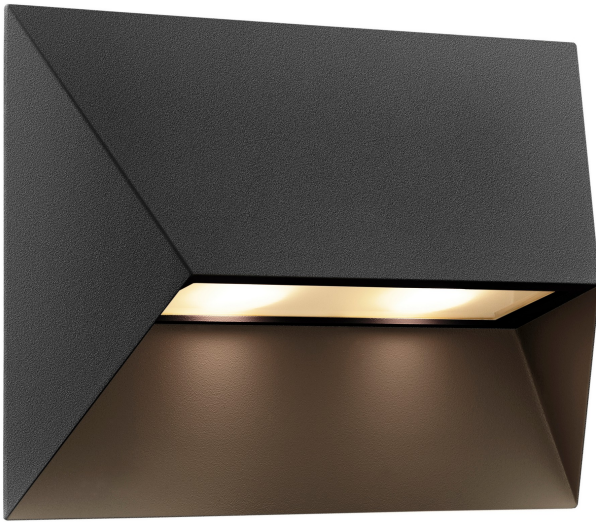


# PONTIO 27 | WALL LIGHT | BLACK

2218191003

nordlux®



Voltage (V): 220-240 Volt  
IP degree: IP54  
Maximum bulb wattage (W): 2x25  
Class (Class 1, Class 2, Class 3):  
Class 1 (Earth contact)  
Socket type: GU10  
Parallel connection: True

Height (cm) : 19  
Width (cm): 27  
Projection (cm): 9  
EAN: 5704924010880  
TUN: 2276902  
Item Number: 2218191003

Pcs Per Master Carton: 3  
Sales Box Height (cm): 28.5  
Sales Box Width(cm): 20.5  
Sales Box Depth (cm): 10.5  
Sales Box Volume m<sup>3</sup> : 0.0061  
Product net weight (kg): 1.1

Primary material: Aluminium  
Suitable for Seaside: False  
Colour: Black

- Architectural design • Parallel connection possible
- Double sockets for extra light output • Space for house number or resident text

Pontio is a series of outdoor lights by Danish design duo Says Who in a streamlined, architectural design. The geometric shape adds a modern, yet timeless expression to your home - while the oblique shade provides a unique and interesting look from all angles. The large, illuminated plate is the perfect place to highlight the resident's house number or names. Matte, slightly textured surface in painted aluminium.