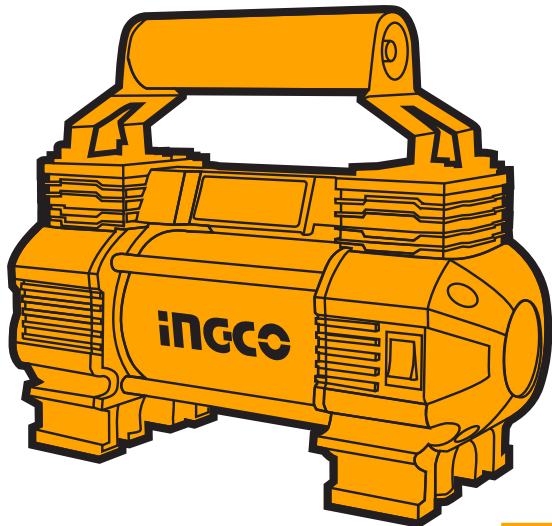


INGCO

www.ingco.com

**PRODUCT
MANUAL**

AUTO AIR COMPRESSOR



AAC2508 AAC2508xy
x (blank, 1,2,3,4,5,6,7,8,9,E,S,A,M);
y (blank, -1,-2,-3,-4,-5,-6,-7,-8,-9,E,S,A,M)



GENERAL SAFETY WARNINGS**⚠ Warning!****Work area safety**

- a) **Keep work area clean and well lit. Cluttered and dark areas invite accidents.**
- b) **Do not operate power tools in explosive atmospheres, such as in the presence of flammable liquids, gases, or dust.** Power tools create sparks which may ignite the dust or fumes.
- c) **Keep children and bystanders.** Distractions can control.

Electrical safety

- a) **Power tool plugs must match the outlet. Never modify the plug in any way.** Do not use any adapter plugs with earthed (grounded) power tools. Unmodified plugs and matching outlets will reduce risk of electric shock.
- b) **Avoid body contact with earthed or grounded surfaces such as pipes, radiators, ranges, and refrigerators.** There is an increased risk of electric shock if your body is earthed or grounded.
- c) **Do not expose power tools to rain or wet conditions.** Water entering a power tool will increase the risk of electric shock.
- d) **Do not abuse the cord. Never use the cord for carrying, pulling, or unplugging the power tool.** Keep cord away from heat, oil, sharp edges or moving parts. Damaged or entangled cords increase the risk of electric shock.
- e) **When operating a power tool outdoors, use an extension cord suitable for outdoor use.** Use of a cord suitable for outdoor use reduces the risk of electric shock.
- f) **If operating a power tool in a damp location is unavoidable, use a residual current device (RCD) protected supply.** Use of an RCD reduces the risk of electric shock.

Personal safety

- a) **Stay alert, watch what you are doing and use common sense when operating a power tool.** Do not use a power tool while you are tired or under the influence of drugs, alcohol, or medication. A moment of inattention while operating power tools may result in serious personal injury.

- b) **Use personal protective equipment. Always wear eye protection.** Protective equipment such as dust mask, non-skid safety shoes, hard hat, or hearing protection used for appropriate conditions will reduce personal injuries.
- c) **Prevent unintentional starting.** Ensure the switch is in the off position before connecting to power source and/or battery pack, picking up or carrying the tool. Carrying power tools with your finger on the switch or energizing power tools that have the switch on invites accidents.
- d) **Remove any adjusting key or wrench before turning the power tool on.** A wrench or a key left attached to a rotating part of the power tool may result in personal injury.
- e) **Do not overreach. Always keep proper footing and balance.** This enables better control of the power tool in unexpected situations.
- f) **Dress properly.** Do not wear loose clothing or jewellery. Keep your hair, clothing, and gloves away from moving parts. Loose clothes, jewellery or long hair can be caught in moving parts.
- g) **If devices are provided for the connection of dust extraction and collection facilities, ensure these are connected and properly used.** Use of dust collection can reduce dust-related hazards.

Power tool use and care

- a) **Do not force the power tool.** Use the correct power tool for your application. The correct power tool will do the job better and safer at the rate for which it was designed.
- b) **Do not use the power tool if the switch does not turn it on and off.** Any power tool that cannot be controlled with the switch is dangerous and must be repaired.
- c) **Disconnect the plug from the power source and/or the battery pack from the power tool before making any adjustments, changing accessories, or storing power tools.** Such preventive safety measures reduce the risk of starting the power tool accidentally.
- d) **Store idle power tools out of the reach of children and do not allow persons unfamiliar with the power tool or these instructions to operate the power tool.** Power tools are dangerous in the hands of untrained users.
- e) **Maintain power tools.** Check for misalignment or binding of moving parts,







breakage of parts and any other condition that may affect the power tools operation. If damaged, have the power tool repaired before use. Many accidents are caused by poorly maintained power tools.

- f) **Keep cutting tools sharp and clean.** Properly maintained cutting tools with sharp cutting edges are less likely to bind and are easier to control.
- g) **Use the power tool, accessories, and tool bits etc. in accordance with these instructions, considering the working conditions and the work to be performed.** Use of the power tool for operations different from those intended could result in a hazardous situation.
- h) **Have your power tool serviced by a qualified repair person using only identical.** This will ensure that the safety of the power tool is maintained.

Service

- a) **Have your power tool serviced by a qualified repair person using only identical.** This will ensure that the safety of the power tool is maintained.
- b) **Never service damaged battery packs.** Service of battery packs should only be performed by the manufacturer or authorized service providers

THE SYMBOLS IN INSTRUCTION MANUAL

	Double insulated for additional protection
	Read the instruction manual before using.
	CE conformity.
	Safety alert. Please only use the accessories supported by the manufacturer.
	Wear safety glasses, hearing protection and dust mask.
	Waste electrical products should not be disposed of with household waste. Please recycle where facilities exist. Check with your Local Authority or retailer for recycling advice.

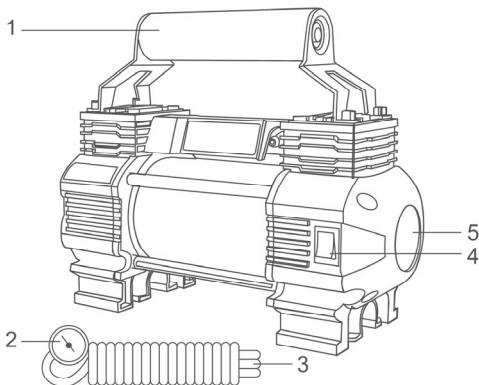
ADDITIONAL SAFETY WARNING

1. Inspect the auto air compressor before each use and do not use if any of the components are bent, broken, burnt, melted, wet or damaged.
2. Check the tyre pressures before inflating so as not to exceed the rated pressure as the tyres may burst if overinflated.
3. Do not use the auto air compressor on high pressure tyres such as those used on commercial vehicles, agricultural or specialist vehicles.
4. Do not kink or block the air hose while the auto air compressor is working.
5. Keep the car engine running when using the auto air compressor otherwise the car battery will run out.
6. Do not use the auto air compressor when the vehicle is moving.
7. The auto air compressor is not designed for continuous use. Operation over an extended period of time will overheat and damage the auto air compressor. It should not be used continuously for more than 30minutes. After 10 minutes, turn it off and let it cool for 15 minutes before resuming operation.
8. If the auto air compressor is making an abnormal sound, or the temperature of the unit is too high, turn the power off immediately and let it cool for at least 30 minutes before resuming operation.
9. Do not leave the auto air compressor unattended when operating and keep out of the reach of children.
10. When not in use store the auto air compressor in a cool, dry and dust free environment in the box.
11. Do not place the auto air compressor on or near sources of direct heat or in locations where it will be exposed to direct sunlight for prolonged periods of time.
12. Do not operate the auto air compressor in or around flammable environments.
13. Only use the adapters supplied with the auto air compressor.
14. The auto air compressor is not waterproof.
15. Ensure cables and hoses connected to the auto air compressor do not interfere in the safe operation of your vehicle.
16. Never put the connector and adaptors into your mouth, ear or eye, they are not toys.
17. The inflator contains no user serviceable parts – Do not open.
18. For your own safety be sure to follow the instructions carefully when using the auto air compressor. Other ways of usage not mentioned in this manual could

lead to injury.

19. No alterations should be made to the auto air compressor, attachments or adaptors supplied by the manufacturer.
20. If your vehicle fuse is blown only replace with a fuse with an identical rating.
21. Improper use of the inflator can cause damage to property and possibly harm the user. When using the Digital auto air compressor ensure the vehicle is parked in a safe location, off the road with the vehicle handbrake on and where your personal safety is not at risk.

SPECIFICATIONS



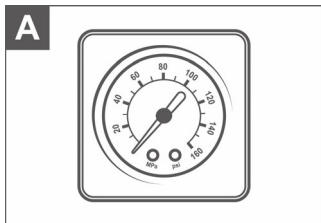
- | | |
|------------------------|-----------------------|
| 1. Handle | 4. ON/OFF main switch |
| 2. Pressure gauge | 5. LED light |
| 3. Compressed air hose | |

Technical specifications

Model No.	AAC2508 AAC2508xy
Power supply	12-13.5V DC
Measurement range	Max: 120psi/8 Bar/800 kPa
Measurement accuracy	±1 psi, -25/+40°C
Flow rate:	45L/min

Model No. NOTE: x (blank, 1,2,3,4,5,6,7,8,9,E,S,A,M);
y(blank,-1,-2,-3,-4,-5,-6,-7,-8,-9,E,S,A,M)

OPERATION PICTURE



Using the digital gauge

Picture of the Compressor's Panel(see Figure A)

Figure A: 1. The unit of blue scale is Bar 2. The unit of black scale is Psi

Tire checks

- Check tires on a monthly basis.
- Incorrect inflation shortens the life and performance of your tires, increasing fuel consumption and jeopardizing safety.

Vehicle tire inflation

- Uncoil all of the power cable on the side of the Tire inflator, ensuring that all the cable is unwound. Insert the 12V DC plug into the 12V socket.
- Remove the dust cap from the tire valve and store in a safe place.
- Carefully pull out the air hose from the Tire inflator. Use the valve connector to attach the tire valve. Ensure the valve is correctly connected and press the valve connector switch.

⚠ Note

Only inflate tires to the manufacturer's specifications. Vehicle tire pressures can generally be found in the handbook, on the door pillar or on the inside of the fuel filler cap.

- Remove the valve connector from the tire valve.
- Replace the tire valve dust cap.

⚠ Note

The gauge on the Tire inflator is for guidance only. Check pressure with a known accurate gauge.

Inflatable & leisure inflation

- Select the appropriate adapter and screw into the valve connector.
- The adapter for sports balls and the adaptor for air mattresses and rafts are clipped onto the rear of the Tire inflator.
- Insert the connector adapter into the appropriate inlet of the inflatable.
- Plug the 12V DC plug into the vehicle 12V socket.

Cleaning

- Only clean the Tire inflator using a clean dry cloth.
- Do not use cleaning products.
- Ensure the Tire inflator is clear of any dust or other debris before connection.

MAINTENANCE&MALFUNCTIONS

Possible malfunctions and methods of their eliminations

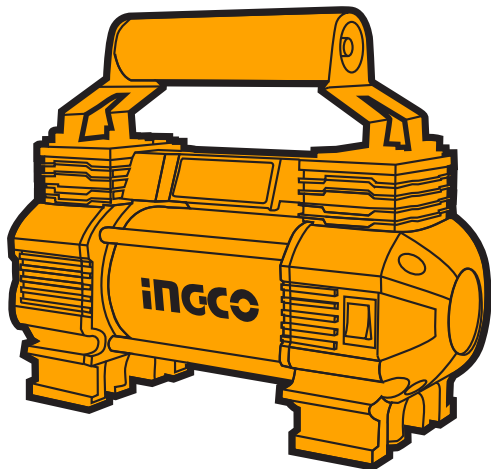
Malfunction	Probable causes	Actions
When the machine is turned on, the electric motor does not work.	<ul style="list-style-type: none"> ● Switch failure ● The power cord or wiring is broken, power cord plug malfunction; ● No brush contact with the collector; ● Wear/damage of brushes 	Disconnect the machine from the mains and contact a qualified specialist.
Formation of a circular fire on the collector	<ul style="list-style-type: none"> ● Brush wear/damage of the brush holder; ● Malfunction in the armature coil 	Disconnect the machine from the mains and contact a qualified specialist. Please don't repair the machine by your own.
When working, smoke or the smell of burning insulation appears from the ventilation openings.	<ul style="list-style-type: none"> ● Malfunction in the electric motor coil; ● Malfunction of the electrical part of the tool. 	
Increased noise in the gearbox	<ul style="list-style-type: none"> ● Wear/breakage of gears or bearings 	
When the machine is turned on, the spindle does not rotate	<ul style="list-style-type: none"> ● Gearbox failure. 	

Critical state criteria

Critical state criteria	Probable causes	Actions
Cracks on the surfaces of bearing and housing parts	Fatigue deformation of metal	Disconnect the machine from the mains and contact a qualified specialist. Please don't repair the machine by your own.
The power cord or plug is damaged	Overload or breakage	
Excessive wear or damage to the motor or reductor mechanism, or a combination of signs	Fatigue deformation of metal	

Critical state criteria

List of critical failures	Actions
Electric motor sparking	It is necessary to contact a qualified specialist
The appearance of extraneous noise	It is necessary to contact a qualified specialist
If the above malfunctions are detected, it is necessary to disconnect the machine from the mains and contact a qualified specialist	



MADE IN CHINA 0624.V06



INGCO Global

www.ingco.com

NEWWAY TECHNOLOGY (SUZHOU) CO., LIMITED

No. 20 Dagang Road, Fuqiao Town, Taicang City, China