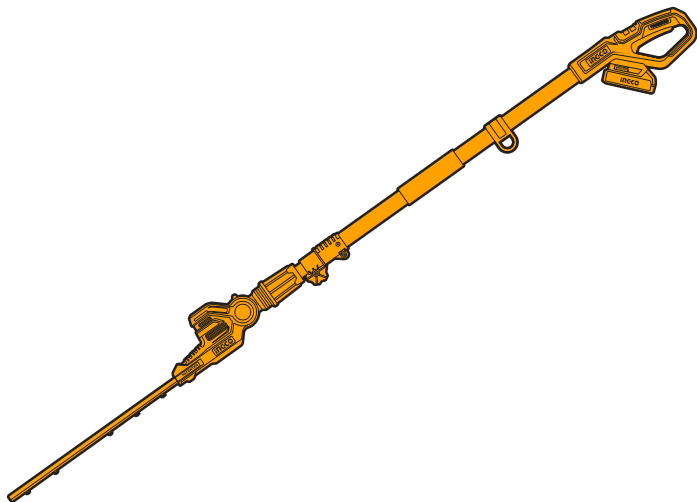


INGCO

www.ingco.com

PRODUCT MANUAL

CORDLESS POLE HEDGE TRIMMER



CPHT201601 CPHT201601xy UCPHT201601xy
x(blank,1,2,3,4,5,6,7,8,9,E,S,A,M)
y(blank,-1,-2,-3,-4,-5,-6,-7,-8,-9,E,S,A,M)



GENERAL POWER TOOL SAFETY WARNINGS

⚠ WARNING Read all safety warnings, instructions, illustrations and specifications provided with this power tool. *Failure to follow all instructions listed below may result in electric shock, fire and/or serious injury.*

Save all warnings and instructions for future reference.

The term "power tool" in the warnings refers to your mains-operated (corded) power tool or battery-operated (cordless) power tool.

1) Work area safety

- a) **Keep work area clean and well lit.** *Cluttered or dark areas invite accidents.*
- b) **Do not operate power tools in explosive atmospheres, such as in the presence of flammable liquids, gases or dust.** *Power tools create sparks which may ignite the dust or fumes.*
- c) **Keep children and bystanders away while operating a power tool.** *Distractions can cause you to lose control.*

2) Electrical safety

- a) **Power tool plugs must match the outlet. Never modify the plug in any way. Do not use any adapter plugs with earthed (grounded) power tools.** *Unmodified plugs and matching outlets will reduce risk of electric shock.*
- b) **Avoid body contact with earthed or grounded surfaces, such as pipes, radiators, ranges and refrigerators.** *There is an increased risk of electric shock if your body is earthed or grounded.*
- c) **Do not expose power tools to rain or wet conditions.** *Water entering a power tool will increase the risk of electric shock.*
- d) **Do not abuse the cord. Never use the cord for carrying, pulling or unplugging the power tool. Keep cord away from heat, oil, sharp edges or moving parts.** *Damaged or entangled cords increase the risk of electric shock.*
- e) **When operating a power tool outdoors, use an extension cord suitable for outdoor use.** *Use of a cord suitable for outdoor use reduces the risk of electric shock.*
- f) **If operating a power tool in a damp location is unavoidable, use a residual current device (RCD) protected supply.** *Use of an RCD reduces the risk of electric shock.*

3) Personal safety

- a) **Stay alert, watch what you are doing and use common sense when operating a power tool. Do not use a power tool while you are tired or under the influence of drugs, alcohol or medication. A moment of inattention while operating power tools may result in serious personal injury.**
- b) **Use personal protective equipment. Always wear eye protection. Protective equipment such as a dust mask, non-skid safety shoes, hard hat or hearing protection used for appropriate conditions will reduce personal injuries.**
- c) **Prevent unintentional starting. Ensure the switch is in the off-position before connecting to power source and/or battery pack, picking up or carrying the tool. Carrying power tools with your finger on the switch or energising power tools that have the switch on invites accidents.**
- d) **Remove any adjusting key or wrench before turning the power tool on. A wrench or a key left attached to a rotating part of the power tool may result in personal injury.**
- e) **Do not overreach. Keep proper footing and balance at all times. This enables better control of the power tool in unexpected situations.**
- f) **Dress properly. Do not wear loose clothing or jewellery. Keep your hair and clothing away from moving parts. Loose clothes, jewellery or long hair can be caught in moving parts.**
- g) **If devices are provided for the connection of dust extraction and collection facilities, ensure these are connected and properly used. Use of dust collection can reduce dust-related hazards.**
- h) **Do not let familiarity gained from frequent use of tools allow you to become complacent and ignore tool safety principles. A careless action can cause severe injury within a fraction of a second.**

4) Power tool use and care

- a) **Do not force the power tool. Use the correct power tool for your application. The correct power tool will do the job better and safer at the rate for which it was designed.**
- b) **Do not use the power tool if the switch does not turn it on and off. Any power tool that cannot be controlled with the switch is dangerous and must be repaired.**
- c) **Disconnect the plug from the power source and/or remove the battery**

pack, if detachable, from the power tool before making any adjustments, changing accessories, or storing power tools. *Such preventive safety measures reduce the risk of starting the power tool accidentally.*

- d) **Store idle power tools out of the reach of children and do not allow persons unfamiliar with the power tool or these instructions to operate the power tool.** *Power tools are dangerous in the hands of untrained users.*
- e) **Maintain power tools and accessories. Check for misalignment or binding of moving parts, breakage of parts and any other condition that may affect the power tool's operation. If damaged, have the power tool repaired before use.** *Many accidents are caused by poorly maintained power tools.*
- f) **Keep cutting tools sharp and clean.** *Properly maintained cutting tools with sharp cutting edges are less likely to bind and are easier to control.*
- g) **Use the power tool, accessories and tool bits etc. in accordance with these instructions, taking into account the working conditions and the work to be performed.** *Use of the power tool for operations different from those intended could result in a hazardous situation.*
- h) **Keep handles and grasping surfaces dry, clean and free from oil and grease.** *Slippery handles and grasping surfaces do not allow for safe handling and control of the tool in unexpected situations.*

5) Battery tool use and care

- a) **Recharge only with the charger specified by the manufacturer.** *A charger that is suitable for one type of battery pack may create a risk of fire when used with another battery pack.*
- b) **Use power tools only with specifically designated battery packs.** *Use of any other battery packs may create a risk of injury and fire.*
- c) **When battery pack is not in use, keep it away from other metal objects, like paper clips, coins, keys, nails, screws or other small metal objects, that can make a connection from one terminal to another.** *Shorting the battery terminals together may cause burns or a fire.*
- d) **Under abusive conditions, liquid may be ejected from the battery; avoid contact. If contact accidentally occurs, flush with water. If liquid contacts eyes, additionally seek medical help.** *Liquid ejected from the battery may cause irritation or burns.*

- e) **Do not use a battery pack or tool that is damaged or modified.** *Damaged or modified batteries may exhibit unpredictable behaviour resulting in fire, explosion or risk of injury.*
- f) **Do not expose a battery pack or tool to fire or excessive temperature.** *Exposure to fire or temperature above 130 °C may cause explosion.*
- g) **Follow all charging instructions and do not charge the battery pack or tool outside the temperature range specified in the instructions.** *Charging improperly or at temperatures outside the specified range may damage the battery and increase the risk of fire.*

6) Service

- a) **Have your power tool serviced by a qualified repair person using only identical replacement parts.** *This will ensure that the safety of the power tool is maintained.*
- b) **Never service damaged battery packs.** *Service of battery packs should only be performed by the manufacturer or authorized service providers*

BATTERY TOOL SAFETY WARNINGS

Save these instructions.

⚠ CAUTION

Only use genuine original batteries. *Use of non-genuine batteries, or batteries that have been altered, may result in the battery bursting causing fires, personal injury, and damage. It will also void the warranty for the tool and charged and dark areas invite accidents.*

⚠ WARNING

- a) **Do not dismantle, open or shred secondary cells or batteries.**
- b) **Keep batteries out of the reach of children.** *Battery usage by children should be supervised. Especially keep small batteries out of reach of small children.*
- c) **Seek medical advice immediately if a cell or a battery has been swallowed.**
- d) **Do not expose cells or batteries to heat or fire.** *Avoid storage in direct sunlight.*
- e) **Do not short-circuit a cell or a battery.** *Do not store cells or batteries haphazardly in a box or drawer where they may short-circuit each other or be short-circuited by other metal objects.*
- f) **Do not remove a cell or battery from its original packaging until required for use.**
- g) **Do not subject cells or batteries to mechanical shock.**
- h) **In the event of a cell leaking, do not allow the liquid to come in contact with the skin or eyes.** *If contact has been made, wash the affected area with copious amounts of water and seek medical advice.*
- i) **Do not use any charger other than that specifically provided for use with the equipment.**
- j) **Observe the plus (+) and minus (-) marks on the cell, battery and equipment and ensure correct use.**
- k) **Do not use any cell or battery which is not designed for use with the equipment.**
- l) **Do not mix cells of different manufacture, capacity, size or type within a device.**
- m) **Always purchase the battery recommended by the device manufacturer for the equipment.**
- n) **Keep cells and batteries clean and dry.**
- o) **Wipe the cell or battery terminals with a clean dry cloth if they become**

dirty.

- p) **Secondary cells and batteries need to be charged before use.** *Always use the correct charger and refer to the manufacturer's instructions or equipment manual for proper charging instructions.*
- q) **Do not leave a battery on prolonged charge when not in use.**
- r) **After extended periods of storage, it may be necessary to charge and discharge the cells or batteries times to obtain maximum performance.**
- s) **Retain the original product literature for future reference.**
- t) **Use the cell or battery only in the application for which it was intended.**
- u) **When possible, remove the battery from the equipment when not in use.**
- v) **Dispose of properly.**

Tips for maintaining maximum battery life

- a) **Charge the battery cartridge before completely discharged.** *Always stop tool operation and charge the battery cartridge when you notice less tool power.*
- b) **Never recharge a fully charged battery cartridge.** *Overcharging shortens the battery service life.*
- c) **Charge the battery cartridge with room temperature at 10°C-40°C (50°F-104°F).** *Let a hot battery cartridge cool down before charging it.*
- d) **Charge the battery cartridge if you do not use it for a long period (more than six months).**

Important safety instructions for battery cartridge

1. **Before using battery cartridge, read all instructions and cautionary markings on battery charger, battery, and) product using battery.**
2. **Do not disassemble battery cartridge.**
3. **If operating time has become excessively shorter, stop operating immediately.** *It may result in a risk of overheating, possible burns and even an explosion.*
4. **If electrolyte gets into your eyes, rinse them out with clear water and seek medical attention right away.** *It may result in loss of your eyesight.*
5. **Do not short the battery cartridge:**
 - a) *Do not touch the terminals with any conductive material.*
 - b) *Avoid storing battery cartridge in a container with other metal objects such as nails, coins, etc.*

- c) *Do not expose battery cartridge to water or rain.*
 - d) *A battery short can cause a large current flow, overheating, possible burns and even a breakdown.*
6. **Do not store the tool and battery cartridge in locations where the temperature may reach or exceed 50°C (122°F).**
 7. **Do not incinerate the battery cartridge even if it is severely damaged or is completely worn out.** *The battery cartridge can explode in a fire.*
 8. **Be careful not to drop or strike battery.**
 9. **Do not use a damaged battery.**
 10. **Follow your local regulations relating to disposal of battery.**

Tool / battery protection system

The tool is equipped with a tool/battery protection system. This system automatically cuts off power to the motor to extend tool and battery life. The tool will automatically stop during operation if the tool or battery is placed under one of the following conditions:

Overload protection

When the battery is operated in a manner that causes it to draw an abnormally high current, the tool automatically stops without any indication. In this situation, turn the tool off and stop the application that caused the tool to become overloaded. Then turn the tool on to restart.

Overheat protection

When the tool/battery is overheated, the tool stops automatically. In this situation, let the tool/battery cool before turning the tool on again.

Transportation

Batteries comply with all applicable shipping regulations as prescribed by industry and legal standards (for more information, check with the manufacturer).

Transporting batteries can possibly cause fire if the battery terminals inadvertently come in contact with conductive materials. When transporting batteries, make sure that the battery terminals are protected and well insulated from materials that could contact them and cause a short circuit.

The information provided in this section of the manual is provided in good faith and believed to be accurate at the time the document was created. However, no warranty, expressed or implied, is given. It is the buyer's responsibility to ensure

that its activities comply with the applicable regulations.

Protecting the environment

Separate collection. This product must not be disposed of with normal household waste.

Should you find one day that your product needs replacement, or if it is of no further use to you, do not dispose of it with household waste. Make this product available for separate collection.

Separate collection of used products and packaging allows materials to be recycled and used again. Re-use of recycled materials helps prevent environmental pollution and reduces the demand for raw materials.

Local regulations may provide for separate collection of electrical products from the household, at municipal waste sites or by the retailer when you purchase a new product.

Rechargeable battery pack

This long-life battery pack must be recharged when it fails to produce sufficient power on jobs which were easily done before. At the end of its technical life, discard it with due care for our environment:

- Run the battery pack down completely, then remove it from the tool.*
- Lithium-ion cells are recyclable. Take them to your dealer or a local recycling station. The collected battery packs will be recycled or disposed of properly.*

THE SYMBOLS IN INSTRUCTION MANUAL

	Do not expose to rain.
	Read the instruction manual before using.
	Warning: Beware of thrown objects.
	Safety alert. Please only use the accessories supported by the manufacturer.
	Do not use the charger if the cord is damaged.
	Keep sufficient distance to electric power lines.
	Always wear gloves, safety goggles, eye protection and head protection. Further protective equipment such as non-skid safety shoes and a hard hat is recommended. Adequate protective clothing will reduce personal injury by falling branches and accidental contact with the saw chain.
	
	
	Remove battery before adjusting or cleaning, and before leaving the machine unattended for any period.

ADDITIONAL SAFETY WARNING

Keep all parts of the body away from the blade. Do not remove cut material or hold material to be cut when blades are moving. Blades continue to move after the switch is turned off. A moment of inattention while operating the hedge trimmer may result in serious personal injury.

Carry the hedge trimmer by the handle with the blade stopped and taking care not to operate any power switch. Proper carrying of the hedge trimmer will decrease the risk of inadvertent starting and resultant personal injury from the blades.

- When transporting or storing the hedge trimmer, always fit the blade cover. Proper handling of the hedge trimmer will decrease the risk of personal injury from the blades.
- When clearing jammed material or servicing the unit, make sure all power switches are off and the battery pack is removed or disconnected. Unexpected actuation of the hedge trimmer while clearing jammed material or servicing may result in serious personal injury.
- Hold the hedge trimmer by insulated gripping surfaces only, because the blade may contact hidden wiring. Blades contacting a "live" wire may make exposed metal parts of the hedge trimmer "live" and could give the operator an electric shock.

Keep all power cords and cables away from cutting area. Power cords or cables may be hidden in hedges or bushes and can be accidentally cut by the blade. Do not use the hedge trimmer in bad weather conditions, especially when there is a risk of lightning. This decreases the risk of being struck by lightning.

Extended-reach hedge trimmer safety warnings

To reduce the risk of electrocution, never use the extended reach hedge trimmer near any electrical power lines. Contact with or use near power lines may cause serious injury or electric shock resulting in death.

Always use two hands when operating the extended- reach hedge trimmer. Hold the extended reach hedge trimmer with both hands to avoid loss of control.

Always use head protection when operating the extended reach hedge trimmer overhead. Falling debris can result in serious personal injury.

Additional safety warnings

This tool is not intended for use by persons (including children) with reduced

physical, sensory or mental capabilities, or lack of experience and knowledge, unless they have been given supervision or instruction concerning use of the appliance by a person responsible for their safety.

Children should be supervised to ensure that they do not play with the appliance.

When working with the machine, always hold it firmly with both hands and provide for a secure stance. The power tool is guided more secure with both hands.

Always ensure all handles and guards are fitted when using the machine. Never attempt to use an incomplete machine or one fitted with an unauthorized modification.

Always lubricate the cutting blade with protective spray before use.

Always wait until the machine has come to a complete stop before placing it down.

- Other persons and animals should remain at a distance of 3 meters or more when the machine is being used. The operator is responsible for third persons in the working area.
- Never grasp the blade of the hedge trimmer.
- Children or persons unfamiliar with these instructions must not operate the hedge trimmer. Local regulations may restrict the age of the operator.
- Never cut a hedge while people, especially children or pets, are nearby.
- The user is responsible for accidents or hazards occurring to other people or their property.
- Do not operate the hedge trimmer when barefoot or wearing open sandals, always wear substantial footwear and long trousers. The use of sturdy gloves, non-skid footwear and safety glasses is recommended. Do not wear loose clothing or jewellery which can be caught in moving parts. Thoroughly inspect the area where the hedge trimmer is to be used and remove all wires and other foreign objects. Prior to operation, check cutter blades, blade bolts and cutter assembly for wear or damage. Do not operate with a damaged or excessively worn cutting device.
- Know how to stop the hedge trimmer quickly in an emergency.
- Cut a hedge only in daylight or in good artificial light. Never operate the hedge trimmer with defective guards or without the guard in place.
- Always ensure all handles and guards supplied are fitted when using the hedge trimmer. Never attempt to use an incomplete hedge trimmer or one with an unauthorized modification.

- Never hold the hedge trimmer by the guard.
- When operating the hedge trimmer, ensure to keep proper footing and balance at all times.
- Always be aware of your surroundings and stay alert for possible hazards that you may not hear whilst operating the hedge trimmer.
- Keep all nuts, bolts and screws tight to ensure that the hedge trimmer is always in a safe working condition.
- The hedge trimmer should be stored in a dry, high or locked up place out of the reach of children.
- Replace worn or damaged parts for safety.
- Do not attempt to repair the machine unless you are qualified to do so.
- Ensure replacement parts fitted are manufacture approved. To prevent accidental contact with the cutting blade, this hedge trimmer is equipped with a switch with mechanical interlock. To operate the hedge trimmer, the locking button must be pressed before the blade functions (see figure I).
- Do not use the product without pressing the locking button. Do not operate this tool with only one hand. Hold the product securely with both hands; one hand to hold the product securely and the other to operate the On/Off switch. **(see Figure I)**

Safety Instructions and Recommendations for Optimal Handling of the Battery

- Ensure the product is switched off before inserting the battery. Inserting the battery into a product that has the switch on can cause accidents.
- Use only batteries intended specifically for this product. Use of any other batteries may create a risk of injury and fire.
- Do not open the battery. There is a risk of short-circuiting
- Keep the battery not being used away from paper clips, coins, keys, nails, screws or other small metal objects, that can make a connection from one terminal to another. Shorting the battery terminals together may cause burns or a fire.
- In case of damage and improper use of the battery pack, vapour may be emitted. Ventilate the area and seek medical help in case of complaints. The vapour can irritate the respiratory system.
- Only use the battery with products from the manufacturer. This is the only way in which you can protect the battery against dangerous overload.

- The battery can be damaged by pointed objects such as nails or screwdrivers or by force applied externally.
- An internal short circuit may occur, causing the battery to burn, smoke, explode or overheat.
- Do not short-circuit the battery. There is a risk of explosion.
- Protect the battery against moisture and water.
- Store the product and battery only within a temperature range between -20°C and 50°C . As an example, do not leave the battery in the car in summer.
- Occasionally clean the venting slots of the battery using a soft, clean and dry brush.

Maintenance

Remove battery before adjusting or cleaning, and before leaving the machine unattended for any period.

- Always wear gardening gloves when handling or working near the sharp blades.
- Inspect the product and replace worn or damaged parts for safety.
- Make sure all nuts, bolts and screws are tight to ensure safe working with the product.
- Ensure replacement parts fitted are manufacture approved. Always lubricate the cutting blade with protective spray before use

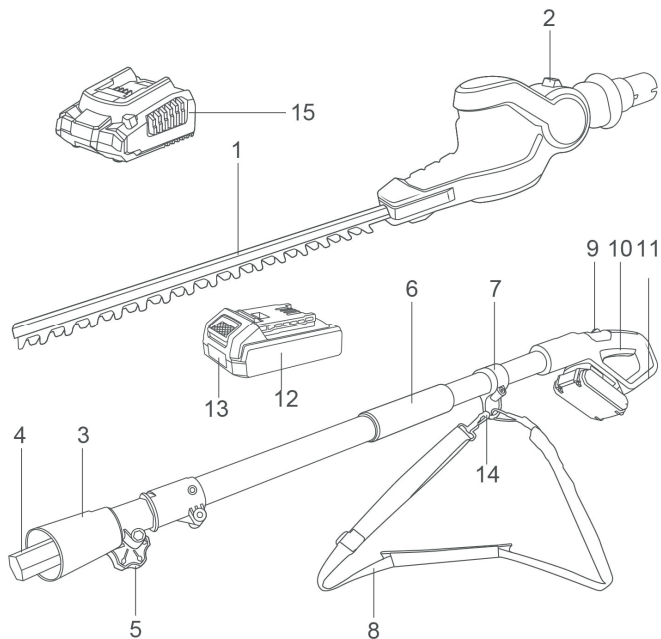
INTENDED USE

The machine is intended for domestic use, for cutting and trimming hedges and bushes at elevated height, while the user is situated on the ground. The machine is not intended to be used on a ladder or steps. The machine is not designed to cut grass and cannot be used as a grass trimmer. This tool is not intended for commercial or industrial use.

SPECIFICATIONS

Read all safety warnings and all instructions. Failure to follow the safety warnings and instructions may result in electric shock, fire and/or serious injury.

The numbering of the product features refers to the illustration of the product on the graphics pages.



- | | |
|------------------------------------|-------------------------------------|
| 1. Cutting blade | 9. Locking button |
| 2. Pivoting head adjustment button | 10. Rear handle |
| 3. Connector | 11. On/Off switch |
| 4. Telescopic tube | 12. Battery |
| 5. Telescopic height adjustment | 13. Battery unlocking button |
| 6. Front handle grip | 14. Hook to front handle strap loop |
| 7. Front handle strap loop | 15. Charger |
| 8. Shoulder strap | |

Accessories shown or described are not included with the product as standard. You can find the complete selection of accessories in our accessories range.

Technical specifications

Model No.	CPHT201601 CPHT201601xy x(blank,1,2,3,4,5,6,7,8,9,E,S,A,M) y(blank,-1,-2,-3,-4,-5,-6,-7,-8,- 9,E,S,A,M)	UCPHT201601xy x(blank,1,2,3,4,5,6,7,8,9,E,S,A,M) y(blank,-1,-2,-3,-4,-5,-6,-7,-8,- 9,E,S,A,M)
voltage	20V ---	20V ---
Stroke rate at no-load	2800/min	2800/min
Blade cutting length	460mm	18"
Tooth opening	18mm	7/10"
Pivoting head	7 positions	7 positions

Noise/Vibration information

Noise emission values determined according to EN 62841-1+EN 628.41-4-2
Typically the A-weighted noise levels of the product are:

Sound pressure level	dB(A)	84.7
Uncertainty K	dB	3
Wear hearing protection!		

Typically the A-weighted noise levels of the product are:

Sound power	dB(A)	92.81
Uncertainty K	dB	3
Wear hearing protection!		

Maximum extension length

Vibration total values a_h (triax vector sum) and uncertainty K determined according to EN 62841-1+EN 62841-4-2

Front handle: a_h	m/s^2	1.295
Rear handle: a_h	m/s^2	1.421
Uncertainty K	m/s^2	1.5

That the declared vibration total value(s) and the declared noise emission value(s) have been measured in accordance with a standard test method any may be used for comparing one tool to another.

That the declared vibration total value(s) and the declared noise emission value(s) may also be used in a preliminary assessment of exposure.

That the vibration and noise emissions during actual use of the power tool can differ from the declared values depending on the ways in which the tool is used especially what kind of work piece is processed; and of the need to identify safety measures to protect the operator that are based on an estimation of the exposure measures in the actual conditions of use (taking account of all parts of the operating cycle such as the times when the tool is switched off and when it is running idle in addition to the trigger time).

⚠ WARNING!

Only use original battery pack and battery charger as below for this power tool:

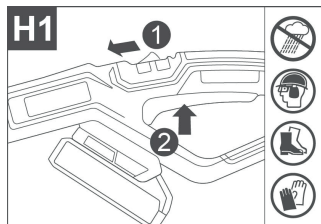
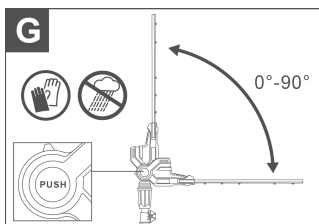
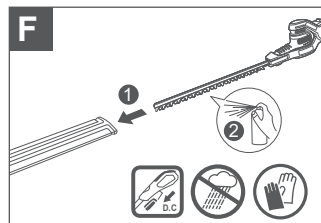
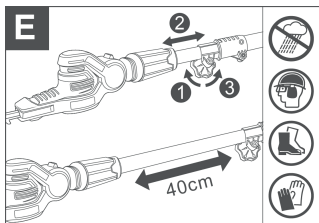
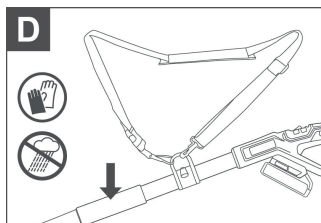
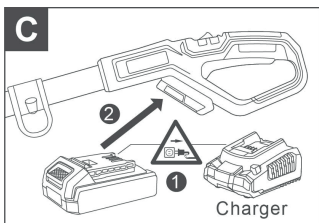
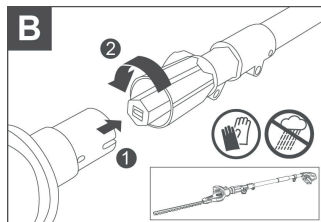
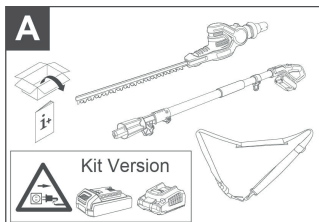
Product	Battery pack		
Model No.	Type	Rated voltage	Rated capacity
FBLI2001 FBLI2001xy	Lithium-Ion	18.5V d.c., 20V Max	2.0Ah
FBLI2002 FBLI2002xy			4.0Ah
FBLI2003 FBLI2003xy			5.0Ah

Model No. NOTE: x (blank, 1,2,3,4,5,6,7,8,9,E,S,A,M); y (blank, -1,-2,-3,-4,-5,-6,-7,-8,-9,E,S,A,M)

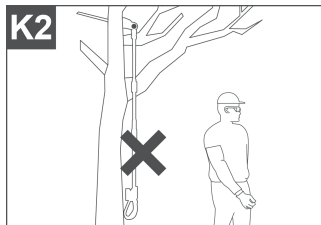
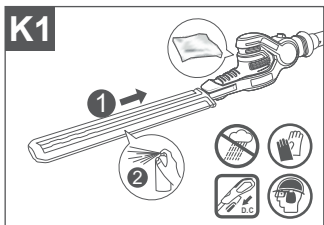
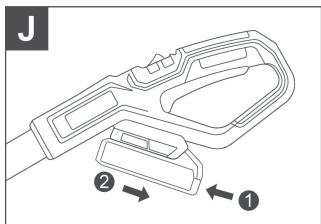
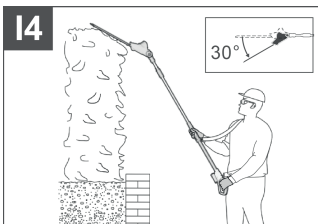
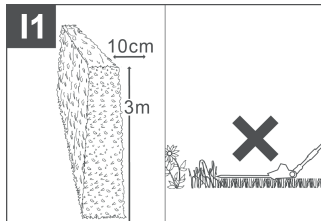
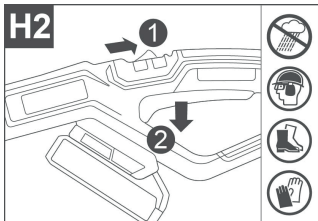
Product	Battery pack charger			
Model No.	Input power	Input voltage	Output rated voltage	Output rated current
FCLI2001 FCLI2001xy	50W	220-240V ~50/60Hz	20V d.c.	2A
UFCLI2001 UFCLI2001xy		110-120V ~50/60Hz		
FCLI20411 FCLI20411xy FCLI2034 FCLI2034xy	105W	220-240V ~50/60Hz	21V d.c.	4A
UFCLI20411 UFCLI20411xy UFCLI2034 UFCLI2034xy		110-120V ~50/60Hz		

Model No. NOTE: x (blank, 1,2,3,4,5,6,7,8,9,E,S,A,M); y (blank, -1,-2,-3,-4,-5,-6,-7,-8,-9,E,S,A,M)

OPERATION PICTURE



OPERATION PICTURE



FUNCTION DESCRIPTION

For your safety

- Before any work on the machine itself (e. g. maintenance, tool change, etc.) as well as during transport and storage, remove the battery from the power tool. There is danger of injury when unintentionally actuating the ON/OFF switch with the locking button.
- The blades continue to move for a fraction of a second after the hedge trimmer is switched off.
- Do not touch the moving blades.
- Do not activate switches until battery is fully attached.

Inserting/removing the battery (see Figure C and J)

Note: Using unsuitable batteries can lead to malfunctions of or cause damage to the power tool.

Insert the charged battery (12) onto the telescopic handle. Make sure that the battery is fully fitted.

To remove the battery (12) from the power tool, press the battery unlocking button (13) and pull the battery out towards the cutting blade.

Assembly

Before any work on the machine itself (e. g. maintenance, tool change, etc.) as well as during transport and storage, remove the battery from the power tool.

There is danger of injury when unintentionally actuating the ON/OFF switch with the locking button.

Tool assembly (see Figure B and D)

Fit the hedge trimmer head and the telescopic handle flush together with each other and secure them by screwing the connector (3) on. Ensure both parts are fitted properly mounted and locked.

Attach the hook of the shoulder strap (8) to the strap loop (7) of the handle.

Remove the blade guard.

Adjusting the telescopic height (see Figure E)

Loosen the telescopic height adjustment (5) by unscrew the knob, extend the telescopic tube (4) to the required length and tighten the knob again.

The machine length can be extended from 2.0 m to 2.40 m depending on the application and the height of the trimmed head.

Adjusting the pivoting head (see Figure G)

Press the pivoting head adjustment button (2), adjust the pivoting head to the required position by moving the hedge trimmer head upwards or downwards, release the pivoting head adjustment button (2) and make sure that the hedge trimmer head is properly locked.

The pivoting head can be adjusted to 7 different positions.

OPERATION**Switching on and off (see Figure H)**

To switch on the power tool, first press the lock-off.

Switch (9) and then press the ON/OFF switch (11). Keep the ON/OFF switch pressed while operating the machine. You can release the lock-off switch while the tool is switched on.

To switch off the power tool, release the ON/OFF switch (11). The lithium-ion battery is protected against deep discharge.

When the battery is discharged, the power tool is switched off by means of a protective circuit: The application tool no longer rotates.

Working instructions (see Figure I)

You can do the top cutting and side cutting refer Figure I.

When trimming the sides of the hedge, begin at the bottom and cut upwards, tapering the hedge inward at the top.

This shape will expose more of the hedge, resulting in a more uniformed growth.

Maintenance and service**Maintenance, storage and transportation (see Figure J and K)**

- Before any work on the machine itself (e. g. maintenance, tool change, etc.) as well as during transport and storage, remove the battery from the power tool.

There is danger of injury when unintentionally actuating the ON/OFF switch with the locking button.

Do not leave the cordless telescopic hedge trimmer hanging in a shrub when interrupting work.

Clean the product with a soft, dry cloth.

Do not modify the product. Modifications can lead to injuries.

Blade maintenance

Lubricate blade before and after each usage with recommended lubricant spray.

Storage and transportation

Store and transport cordless pole hedge trimmer with battery removed and protection blade cover fitted.

Battery maintenance

Use the following procedures to enable optimum usage of the battery:

- Protect the battery against moisture and water.
- Store the machine and battery only within a temperature range between -20°C and 50°C . As an example, do not leave the battery in the car in summer.
- It is recommended that the battery is not stored within the product but stored separately.
- Do not leave the battery in the product in direct sunlight.
- The ideal storage condition for the battery is 5°C .
- Occasionally clean the venting slots of the battery using a soft, clean and dry brush.

A significantly reduced working period after charging indicates that the battery is used and must be replaced.

Transport

The recommended lithium-ion batteries are subject to legislation on the transport of dangerous goods. The user can transport the batteries by road without further requirements.

When shipping by third parties (e.g.: by air transport or forwarding agency), special requirements on packaging and labelling must be observed. For preparation of the item being shipped, consulting an expert for hazardous materials required.

Dispatch battery packs only when the housing is undamaged. Tape or mask off open contacts and pack up the battery in such a manner that it cannot move around in the packaging. Please also observe the possibility of more detailed national regulations.

Disposal



Power tools, rechargeable batteries, accessories and packaging should be sorted for environmental-friendly recycling.



Do not dispose of power tools and batteries/rechargeable batteries into household waste!

MAINTENANCE&MALFUNCTIONS

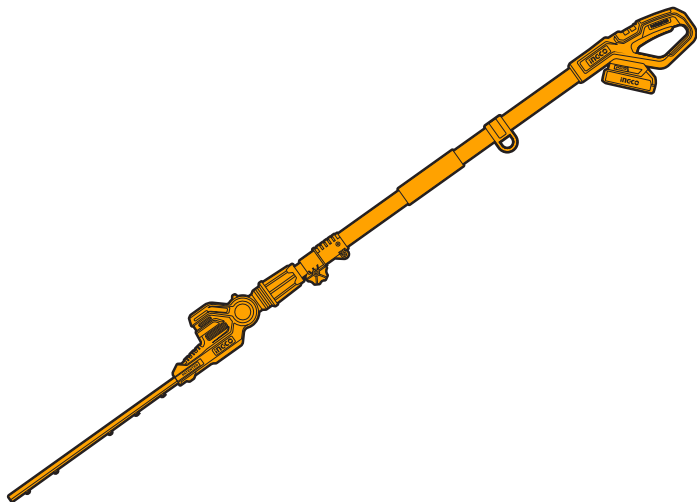
The following chart lists problem symptoms, possible causes and corrective action, if your machine does not operate properly. If these do not identify and correct the problem, contact your service agent.

WARNING!

Switch off and remove the battery prior to any troubleshooting.



Problem	Possible cause	Corrective measure
Cutting time per battery charge too low	Too much friction, due to lack of lubricant	Apply lubricant spray
	Blade needs cleaning	Clean blade
	Poor cutting technique	see "Working instructions"
	Battery not fully charged	Recharge battery
	Battery thermal protector actuated	Allow battery to cool down and restart
The blades are running slow	Battery discharged	Allow battery to cool down and restart
	Battery stored outside of battery temperature	Allow battery to warm naturally to room temperature (within battery operating temperature 0–40 °C)
Hedge trimmer does not operate	Battery discharged	Recharge battery
	Safety switch not activated correctly	see " Switching on and off "
Hedge trimmer operates intermittently		
	Internal wiring of machine defective	Contact Service Center
Motor runs but blades remain stationary	On/Off switch defective	Contact Service Center
	Internal Error	Contact Service Center
Cutting blade hot	Too much friction, due to lack of lubricant	Apply lubricant spray
	Cutting blade blunt	Contact Service Center
	Cutting blade has dents	Contact Service Center
Blade will not move Machine defective	Battery discharged	Recharge battery
	Machine defective	Contact Service Center
Excessive vibrations/ noise	Machine defective	Contact Service Center



MADE IN CHINA 0525.V05

   INGCO Global www.ingco.com

NEWWAY TECHNOLOGY (SUZHOU) CO., LIMITED
No. 20 Dagang Road, Fuqiao Town, Taicang City, China