



# StormDrain Plus

## Product Data Sheet

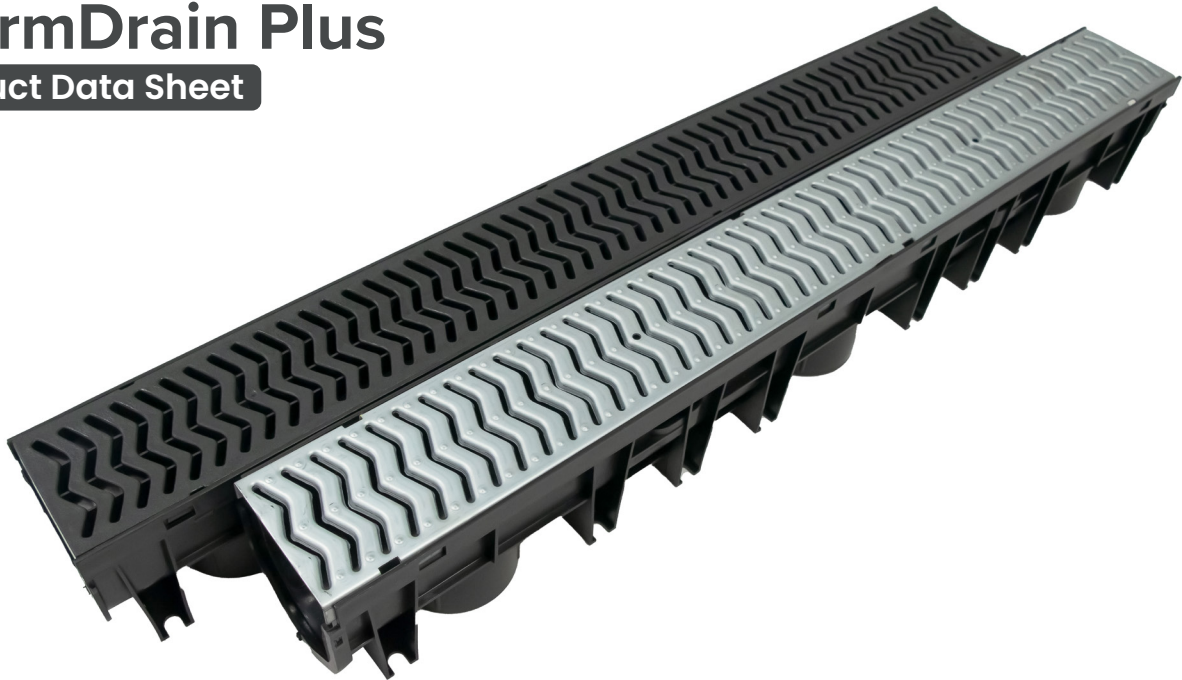
Installation guidance and assistance is available  
For further information, please call 0121 552 8887

[info@polydraincivils.com](mailto:info@polydraincivils.com) | [www.polydraincivils.com](http://www.polydraincivils.com)

**POLYDRAIN.**  
Advanced Water Management Solutions

# StormDrain Plus

## Product Data Sheet



Product Code	Material	L x W x D [mm]	Weight [kg]
<b>STDP1000</b>	Polypropylene	1000 x 120 x 87	2.08
<b>STDP1000G</b>	Galvanised Grate		2.99

### Key Benefits

- Heelguard grates as standard
- Recycled and recyclable material
- Labour saving quad connector
- Improved male and female connections
- Sump unit with integral water trap to prevent colours
- Cross-braced design prevents floating
- Lightweight polypropylene, with high impact strength at hot and cold temperatures

 **Tested to BS EN 1433 A15 & conforms to building regulations**

### Product Overview

- Quad connector, sump unit, jointing clip, end outlet, end cap, support bracket

### Application

- Pedestrian areas
- Sports pitches
- Swimming pools
- Walkways



Installation guidance and assistance is available  
For further information, please call 0121 552 8887

[info@polydraincivils.com](mailto:info@polydraincivils.com) | [www.polydraincivils.com](http://www.polydraincivils.com)



**POLYDRAIN.**  
Advanced Water Management Solutions

# Accessories

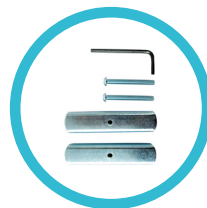
## StormDrain Plus

Product Code	Description	Length [mm]	Weight [kg]
STDPQC	Quad Connector [Plastic]	123	0.28
STDPQCG	Quad Connector [Galvanised]	123	0.45
STDPEC	Secure End Cap	N/A	0.05
STDPEO/110	End Outlet 110mm	N/A	0.08
STDPSUMP	Sump Unit [Plastic]	330 [390 deep]	
STDPSUMPGG	Sump Unit [Galvanised]	330 [390 deep]	
LBK	Locking Bar Kit		
CHANNELCLIP	Jointing Clip		

Secure End Cap

Sump Unit

Jointing Clip



Quad Connector

End Outlet

Locking Bar Kit



Installation guidance and assistance is available  
For further information, please call 0121 552 8887

info@polydraincivils.com | www.polydraincivils.com



**POLYDRAIN.**  
Advanced Water Management Solutions



***POLYDRAIN.***

Dudley Road East, Tividale, Oldbury, B69 3HJ

Installation guidance and assistance is available  
For further information, please call 0121 552 8887

[info@polydraincivils.com](mailto:info@polydraincivils.com) | [www.polydraincivils.com](http://www.polydraincivils.com)

Advanced Water  
Management Solutions