

Agricultural Land Drainage

Naylor Land Drainage pipe is a single wall, perforated corrugated pipe manufactured from high-density polyethylene allowing fast and easy installation and excellent water flow.

Available in 60mm, 80mm, 100mm and 160mm diameter in 25m, 50m and 100m coils depending on diameter



Agri-Drain Land Drainage

Perforated - Black

External Dia. (mm)	Length (m)	Colour	Code
60	50	Black	68032
60	150	Black	68033
80	25	Black	68034
80	50	Black	68035
80	100	Black	68036
100	25	Black	68037
100	50	Black	68038
100	100	Black	68039
160	50	Black	68007
160*	35	Black	68094

Manufactured in High Density Polyethylene.

Manufactured in accordance with BS 4962. 100% recycled.
* Subject to minimum order quantity and lead time.

Unperforated - Black

External Dia. (mm)	Length (m)	Colour	Code
60	50	Black	68042
60	150	Black	68043
80	50	Black	68053
80	100	Black	68049
100	25	Black	68050
100	50	Black	68044
100	100	Black	68045
160	50	Black	68009
160*	35	Black	68046

Manufactured in High Density Polyethylene.

Manufactured in accordance with BS 4962. 100% recycled.
* Subject to minimum order quantity and lead time.



Kitemarked Land Drainage

Unperforated - Black

External Dia. (mm)	Length (m)	Colour	Code
60*	150	Black	68214
80*	100	Black	68313
100*	100	Black	68413
160*	50	Black	68512

Manufactured in High Density Polyethylene.

*Marked Naylor BS 4962

Subject to minimum order quantity and lead time.



Kitemarked Land Drainage

Perforated - Black

External Dia. (mm)	Length (m)	Colour	Code
60*	50	Black	68202
60*	150	Black	68204
80*	25	Black	68301
80*	50	Black	68302
80*	100	Black	68303
100*	25	Black	68401
100*	50	Black	68402
100*	100	Black	68403
160*	50	Black	68502

Manufactured in High Density Polyethylene.

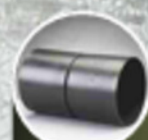
*Marked Naylor BS 4962



Land Drainage Universal Fittings

Junctions

Description	Pack Qty.	Code
60/80/100 Multi Junction	50	68064
60/160 Multi Junction	10	68061



Land Drainage Connectors

External Dia. (mm)	Code
60	68066
80	68067
100	68062
160	68063



Land Drainage End Caps

External Dia. (mm)	Code
60	68090
80	68088
100	68091
160	68109