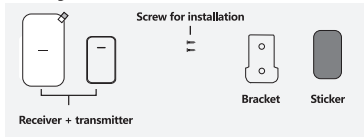
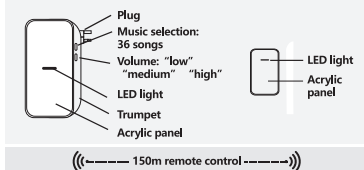


SELF-POWER AC WIRELESS DOORBELL EN

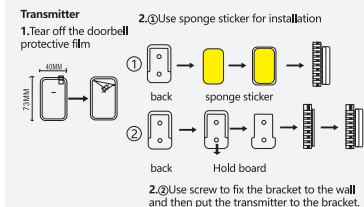
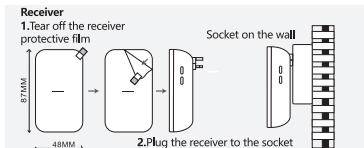
I. Packing list



II. Appearance and function



III. Installation instructions



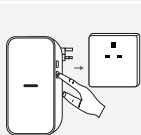
36 chord music for choice, you can choose your favorite music as ringtone. The volume button includes 'low', 'medium' and 'high' for adjustment. 150-m remote control.

Insert the AC receiver into the applicable power socket; when the receiver rings with a "ding dong" sound, the receiver enters the working state; very little power consumption (less than 15W); The transmitter does not need any battery; The transmitter can be installed by using sponge sticker or screws.

IV. Matching methods



Learning code matching: power on the receiver, long press "volume button" for 3 seconds, after hearing "ding-dong, ding-dong" sounds, it enters into the matching mode. Aim the transmitter needing for matching to the receiver; then the receiver makes sound, "ding dong, ding dong", which means successful matching. If not receiving successfully or there is no signal of transmitter within 5 seconds, it will exit the matching mode automatically.



Clear the learning code matching: in the case of power failure of the receiver, long press the "volume button", and then plug in the power, loose hand after hearing "ding dong, ding dong" sound, clear all the learning code matching of the machine; at this time, all transmitters will fail and needs to be matched again.

Free matching, for example, one transmitter for one receiver, one transmitter for multiple receivers, multiple transmitters for one receiver or multiple transmitters for multiple receivers; for multiple matches, please repeat the above online matching operation.

V. Matters needing attention

1. DO NOT USE THE DOORBELL IN A HIGH TEMPERATURE ENVIRONMENT ABOVE 60°C.
2. WIRELESS DOORBELL SHALL NOT BE INSTALLED BESIDES THE TELEVISION, ELECTROMAGNETIC OVEN, MICROWAVE OVEN AND OTHER ELECTRIC APPLIANCES WITH ELECTROMAGNETIC WAVE. KEEP AWAY FROM THEM AS FAR AS POSSIBLE, OTHERWISE THE ELECTROMAGNETIC WAVE WILL INTERFERE WITH THE SIGNAL THAT THE DOORBELL RECEIVES.
3. DO NOT INSTALL THE DOORBELL ABOVE THE IRON DOOR, WHICH ALSO HAS A MAGNETIC FIELD AND WILL ALSO AFFECT THE RECEIVING EFFECT OF THE DOORBELL RECEIVER.
4. THE RECEIVER CAN BE FIXED BY SPONGE STICKER OR SCREWS. PLEASE MAKE SURE THE TRANSMITTER IS NOT CLOSE TO METAL MATERIAL AND IS AWAY FROM RAIN. (IN CASE, USE HAIR DRYER FOR DRYING).



AIGOSTAR INTERNATIONAL LIMITED
UNIT 4 TEES VALLEY COURT GLENARM ROAD
WYNYARD TS22 5FE GB
GB311003583

[HTTP://WWW.AIGOSTAR.COM](http://www.aigostar.com)
MADE IN CHINA

