

## Warranty

Products are protected by warranty against manufacturing defects for a period of 12 months from the date of purchase or delivery, including against defects in production, materials and workmanship.

In the event of a problem with the product within the warranty period please return it to your nearest store. If the item is shown to have an inherent defect present at the time of sale the store will, at its discretion, provide you with a replacement. If we are unable to repair or replace a defective product, we will refund the purchase price of the defective product in part or in full.

This warranty does not cover the product where the fault is due to you or any third parties misuse, abuse, neglect, use in contravention of any oral or written instructions as to the storage, installation, commissioning, use or maintenance of the product, or where the product has been the subject of unauthorised modifications or alterations without our prior written consent, including the use of unauthorised spares, or has been the subject of commercial use. For the avoidance of doubt, the exclusions in this paragraph apply to any defect arising as a result of fair wear and tear, willful damage, negligence or abnormal working conditions, or where products differ from their description as a result of changes made to ensure they comply with applicable statutory or regulatory standards.

The terms of this warranty shall apply to any repaired or replacement product we supply and the 12 month warranty period is treated as continuing as if the repaired or replacement product was supplied at the original date of purchase.

Your statutory rights remain unaffected and nothing in this warranty shall limit or exclude our liability for any rights you have under the Consumer Rights Act 2015. If any part of this warranty is deemed unenforceable (including any exclusion of liability) the enforceability of any other parts of this warranty will not be affected.

**Please retain for future reference.**

	<p>The packaging material is recyclable. Dispose of the packaging in an environmentally friendly manner and make it available for the recyclable material collection-service.</p>
	<p>Dispose of the product in an environmentally friendly manner when you decide to part with it. This device should not be disposed of with household waste. Dispose of it at a recycling centre, check with your local authority or retailer for recycling advice. Please note that all products with this symbol below must be recycled.</p>

# ARLEC

### Arlec Electrical Company Limited

Arlec's telephone number, address and email address are:

**Customer Service: 0800 112 0275**

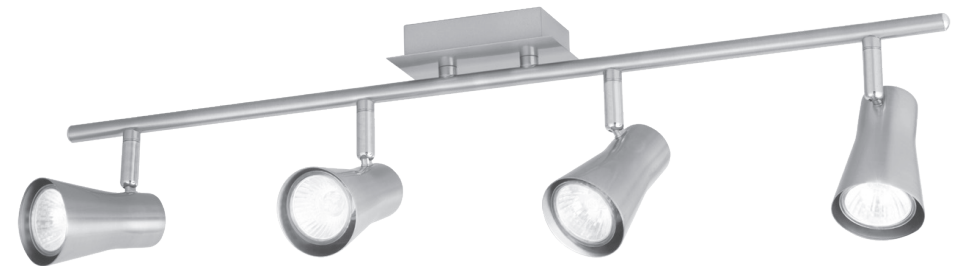
Arlec Electrical Company Ltd.

Unit 18, Cromwell Business Park, Howard Way,  
Newport Pagnell, Buckinghamshire, MK16 9QS.

Email: [custservice@arlec.co.uk](mailto:custservice@arlec.co.uk)

© This instruction leaflet is subject to copyright and must not be reproduced, copied or otherwise used in any way or for any purpose without the consent in writing of the owner, Arlec Electrical Company Limited.

verve  
design



Swansea

SPOTLIGHT

4 Adjustable Spotlights  
Satin Nickel Finish  
SL0427GB

- For your safety, this product must be installed in accordance with the local Building Regulation.
- If in any doubt, or where required by the law, consult a competent person who is registered with an electrical self certification scheme. Further information is available online or from your Local Authority.

## INSTALLATION INSTRUCTIONS

### Introduction

The Swansea Decorative Spotlight is suitable for indoor use only. Its brushed metal finish light fittings adds a contemporary style to any modern décor. This fixture may be used in conjunction with light dimmers.

**IMPORTANT: PLEASE READ THESE INSTRUCTIONS CAREFULLY BEFORE FIRST USE.**

## Specifications

**Voltage:** 220-240V 50Hz

**Protection**

**Class:** I (must be connected to earth)

**Power Rating:** Max 7W LED per bulb

## FOR INDOOR USE ONLY

## Bulb Type

**GU10 type max 7W LED per bulb, 40° beam recommended for spotlight effect.**

- This fixture is suitable for continuous operation.
- The fixture may be used in conjunction with lamp dimmers. Only if globes are dimmable.


## WARNING!

Please ensure the following safety warnings are observed:

- The fixture must be correctly connected to earth.
- Read the instruction prior to installation or use. Please retain the instructions for future reference.
- Before attempting to install or remove bulbs, ensure the power is switched OFF.
- Installation in circuits protected by safety switches (Earth leakage circuit breakers) is recommended.
- Use only on rated voltage and with specified bulbs, otherwise overheating and damage may occur.
- The fixture will produce some heat in use, ensure that adequate ventilation is provided.
- Do not cover with any material, and keep clear of window furnishings. Ensure that the fixture is not mounted within 500mm of flammable materials.
- Illuminated surfaces must be at least 500mm from lamps.
- Do not allow the fixture to come into contact with liquids.
- Ensure the fixture is fully assembled before energizing.
- Only user replaceable components are the bulbs. Other components are not to be maintained by the user.
- Not suitable for use near flammable liquids, vapour, gases or in explosive environments.

## INSTALLATION

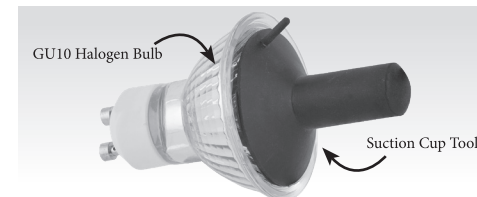
This spot light fixture is suitable for permanent installation indoors on ceilings or walls in any position, without effect on lifetime or light output. The mounting must be in a rigid and dry location.

- 1 Ensure the power to the circuit being connected to is isolated.
- 2 Remove fixture from carton and remove all packing materials.
- 3 Select a suitable mounting position.
- 4 Ensure there is adequate length of TPS cable available at centre of intended mounting location (approx 300mm).
- 5 Disassemble the mounting bracket from the fixture by loosening the screws and slipping out of the "L" shaped slots.
- 6 Using the bracket as a template, mark suitable fastener positions through the mounting hole positions in the bracket.
- 7 Using the fasteners supplied, or other fasteners suitable for the surface being mounted to, mount the bracket securely in place.
- 8 Before proceeding double check that when the fixture is fitted to the bracket it will be in the desired position, adjust as necessary.
- 9 Connect the supply wiring to the terminal block of the fixture, observing the correct polarities as marked.
  - Connect supply active to terminal marked "L" (or "A").
  - Connect supply neutral to terminal marked "N".
  - Connect supply earth (green/yellow wire) to terminal marked "E" or .
  - Leave the earth wire a little longer than the live wires so that it would be last to pull out if there was excessive force applied to supply cord.

2

- 10 Ensure that the wiring of the supply and internal wires are not trapped or crushed.
- 11 Fit the fixture onto the bracket, ensure that the bracket is correctly engaged into base "L" slots -secure and tighten the bracket screws.
- 12 Fit bulbs into lamp bases – place into lamp base and rotate 1/4 turn clockwise to engage.
- 13 Clean off any dust and finger marks from fixture.
- 14 Adjust position of spotlights in desired orientations.
- 15 Energise the circuit and check that lamp operates.
- 16 Dispose of packaging material.

## BULB FITTING TOOL



A suction cup tool is provided to assist in fitting bulbs, as it is difficult to grasp the bulb once positioned in the lamp body.

- 1 Press the suction cup onto the face of the GU10 bulb.
- 2 You can use the suction cup as a handle to insert or remove the bulb from the lamp base.
- 3 Remove the tool from bulb by lifting the edge of the cup to release.
- 4 Keep the tool in a safe place so that you have next time a bulb needs replacement.

**CAUTION!** Do not use tool on hot bulbs. Remove tool before operating light fixture.

## CHANGING BULB

1. Ensure the power is switched off.
2. Remove bulb by rotating bulb anticlockwise 1/4 turn to allow it to disengage and lift out of holder.
3. Fit new bulb of recommended type – place into lamp base and rotate 1/4 turn clockwise to engage.
4. Switch ON and check operation.

## CARE AND CLEANING

- Ensure fixture is turned off when replacing bulbs or cleaning.
- Allow to cool before handling.
- Only replace bulbs with correct type, rating and size.
- Do not use harsh abrasive or solvent on any part of the fixture, clean only using dilute mild detergent on damp cloth.
- Do not insert any object into lampholder or during cleaning.

3