



CRAIG  
& ROSE<sup>®</sup>

— SINCE 1829 —

ARTISAN<sup>™</sup>

SPECIAL  
EFFECT PAINTS

—  
FOR THE MODERN HOME





# For the modern home

## ARTISAN SPECIAL EFFECT PAINTS

Adopting texture into the home is the ultimate choice for adding depth, personality, and unique visual intrigue. This refreshing return to material-inspired applications allows us to relish in the detail of natural and tactile finishes, creating cocooning warmth and balance. The Artisan Effect range enables an imaginative approach to decorating, encouraging originality and creative flair. The diverse selection of entirely unique finishes will transform the look and atmosphere of any space.

Whether you are inspired to replicate the calming, restorative qualities of natural materials or elevate your scheme with striking metallic details; this specialty collection of decorative paints creates bold, beautiful and bespoke results in your home.

# Tonal elements

## Design Tip

Apply your final coat with a wide brush in random brush strokes to get a unique stone effect.



Stone European

## STONE EFFECT

With the interiors trend for tonal neutrals and natural textures in full swing, Artisan Stone Effect is the answer to bringing a tactile, organic finish to the home.

The perfect backdrop against minimal style accessories and varying tones of caramel through to warm grey. The textured surface of this water-based finish effectively emulates the matt, earthy feel of weathered natural stone, elevating feature walls, décor and architectural details.



STONE EUROPEAN



STONE CASTAWAY



STONE CHARCOAL



## RUST EFFECT

The rugged beauty of art colliding with science. Artisan Rust Effect is a two-part paint system, which when paired, oxidises, leaving walls and painted objects with natural shades of earthy rusted iron. Ideal for interior and exterior projects. A statement making scene on its own or balance organically with leafy green fauna and woven textures.



RUST

### Design Tip

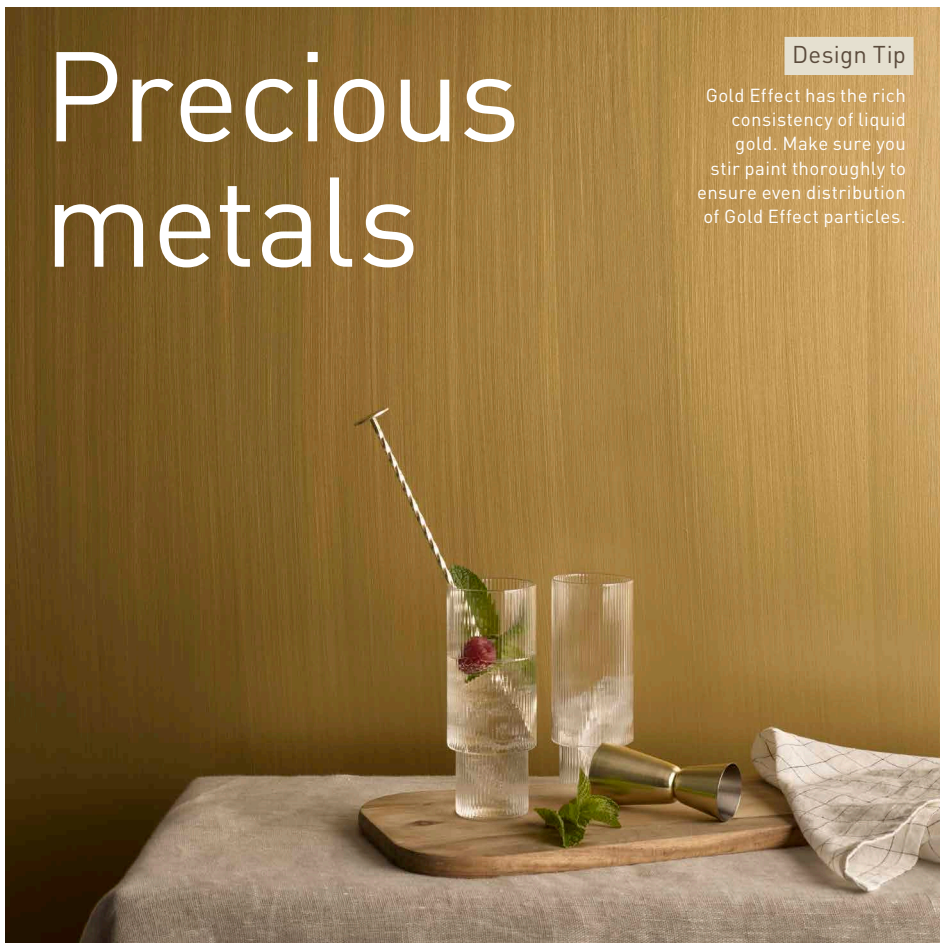
For an industrial rust finish, simply apply two coats of Artisan Rust Effect with a wide brush using random brush strokes. After 12 hours, apply two coats of Artisan Rust Effect Activator and watch as your bespoke rust finish develops.



# Precious metals

## Design Tip

Gold Effect has the rich consistency of liquid gold. Make sure you stir paint thoroughly to ensure even distribution of Gold Effect particles.

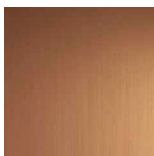


Antique Gold

## GOLD EFFECT

An undeniably timeless and luxurious finish, golds have graced our homes throughout the ages. Whether used to reinstate history by picking out motifs on cornicing, or creating impact by dripping walls in gold, Artisan Gold Effect is the simple way to bring opulence to design.

A decadent finish that creates the look of shimmering gold, versatile in use for feature walls, ceilings, trim or furniture.



ROSE GOLD



BRONZE GOLD



ANTIQUE GOLD

## STAINLESS STEEL EFFECT

Add a metallic touch, without the metal. Give a sleek, stylish stainless steel appearance to feature walls, architectural features and home accessories with Artisan Stainless Steel Effect. Perfect for brightening dark spaces with its reflectivity or adding an urban edge to a modern design. A luxurious, high impact finish, at home in cool-toned contemporary schemes.



STAINLESS STEEL



### Design Tip

Artisan Stainless Steel Effect can be applied in numerous ways to achieve a different look. Run your brush strokes vertically for a classic brushed steel finish or use swift round movements to create a burnished steel effect.

## CONCRETE EFFECT

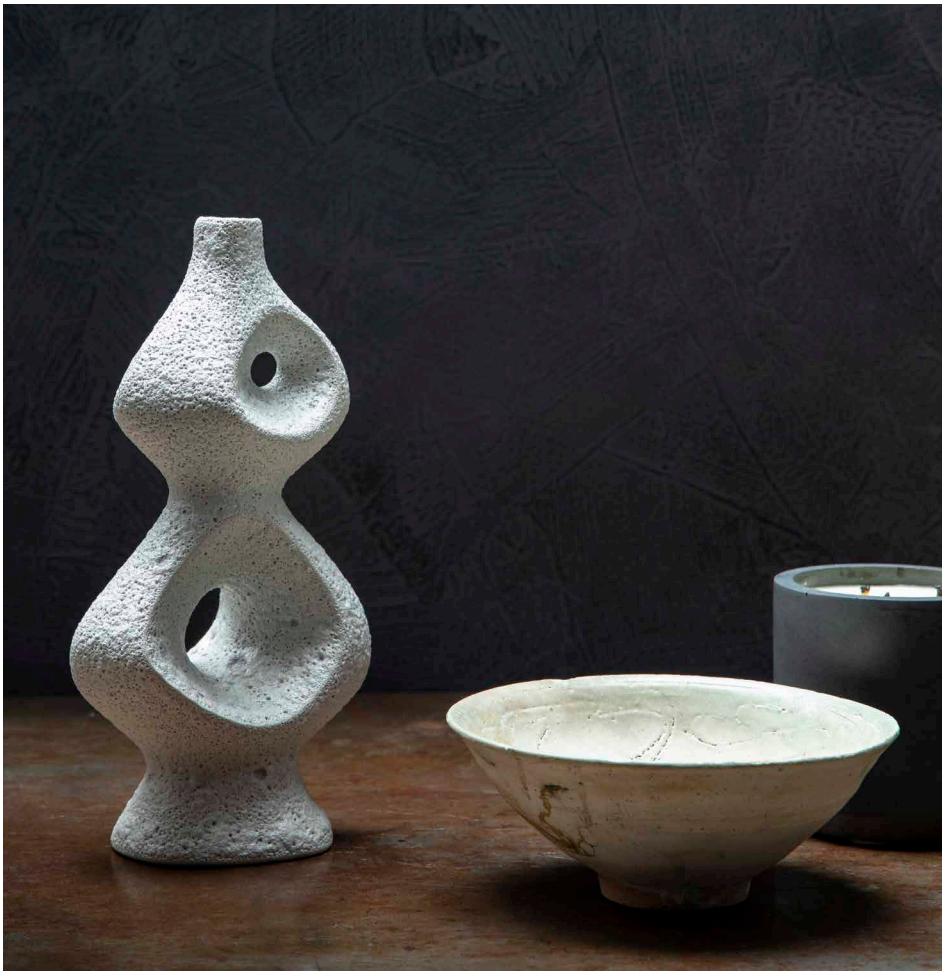
Artisan Concrete Effect is a showstopper, imitating the distinct characteristics of concrete surfaces. Perfect for a modern, industrial vibe, Concrete Effect provides depth and texture for a statement finish. Enjoy the refined industrial textural effect of polished concrete against copper and matt black accents or softened alongside Carrera marble. Concrete Effect can be left raw and rigid or smoothed, polished, and waxed depending on the desired tactility.



ONYX EDGE



PALE ELEMENTS



Onyx Edge



# Raw beauty

## Design Tip

For a polished concrete finish, apply Artisan Concrete Effect using a roller. Smooth the surface and create texture with a steel trowel with broad sweeping strokes. To finish, lightly polish with sandpaper.



## COPPER EFFECT

Fall deep under the timelessly tactile spell of copper with Artisan Copper Effect. Get creative with your finish. Bring brushed, bruised, or polished copper into your projects with refreshed doors, details and decor. Create the lustrous look of metallic copper on feature walls, team with complimentary metallics and contrasting colour schemes for a contemporary edge.



COPPER

# Metallic minerals



### Design Tip

To create a textured copper finish with depth, roll on two coats of Artisan Copper Effect. While the paint is still wet, drag a brush in random patterns, overlapping brushed areas to make it your own.



### Design Tip

To create a bespoke patina feature, simply apply Artisan Copper Patina Effect by brush or muslin cloth in a random pattern over your final, touch dry coat of Artisan Copper Effect. Increase the intensity of the patination with further coats.

Copper Patina

## COPPER PATINA EFFECT

Desiring a decadent weathered look minus the effort? Apply over Artisan Copper Effect and watch in wonder as you create opalescent colours of faded regency rooftops, with deep mineral hues and romantic shades of verdigris turquoise and aqua. Artisan Copper Patina Effect reacts with particles in Artisan Copper Effect to create an aged, green patina finish which is perfect for statement feature walls, outdoor pots, or ornaments.



COPPER PATINA

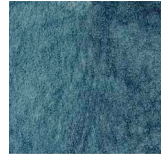


## CHALK WASH EFFECT

Create the look of delicate broken colour with this subtle marble-like effect. Elegant and timeless, the velvet-like consistency of Artisan Chalk Wash brings a raw depth to any room. Leaning into its metamorphic nature, a plethora of textures and effects can be created. Large sweeping brush movements can evoke ocean waves with Blue Ochre, or a stippling effect creates an organic plaster feel with Pink Clay.



PINK CLAY



BLUE OCHRE



TERRE VERT



FLAX YELLOW



Pink Clay

## Design Tip

Apply Artisan Chalk Wash over Craig & Rose 1829 Chalky Emulsion. Pair with a similar shade for a more understated look, a complimentary neutral to make the texture more vivid or choose a contrasting colour for a bold statement.

# Organic texture

# All that shimmers

## Design Tip

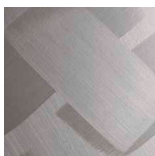
For a brushed metal finish, apply two coats of Artisan Metallic Effect with a roller. While the final coat is still wet, drag a brush in a random pattern to create your desired finish.



Tempered Bronze

## METALLIC EFFECT

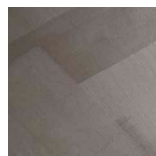
Consider elevating your next design project with hints of sophisticated gleaming metal. Create the look of shimmering metal and add a touch of luxury to any room with Artisan Metallic Effect. The light and radiance of metal provides a modern twist on traditional furniture or as a highlight on decorative items, like mirror frames or vases. Pair this lavish finish with warm neutrals and organic forms for juxtaposed cohesiveness.



NEUTRAL INTRIGUE



TEMPERED BRONZE

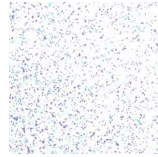


AGED BRONZE

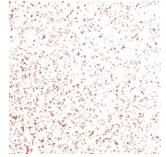


## GLITTER GLAZE

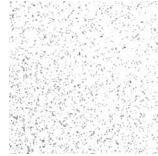
Lend your home some subtle sparkle. This stylish top coat dries clear leaving just a glint of glitter to catch the eye. Perfect for creating a sophisticated glittery shimmer look in residential or commercial spaces. Use Glitter Glaze over a dark Craig & Rose 1829 base colour to create drama on a feature wall, or over a light colour for a fresh, ethereal feel.



DIAMOND DUST



ROSE GOLD



STARLIGHT SILVER



GOLD SPARKLE

### Design Tip

This ready to use glitter paint can be applied over any Craig & Rose 1829 Chalky Emulsion colour to create the look you desire. Build the intensity of sparkle with additional coats.





Inspired by the possibilities of our effect paints but need some advice? Visit our website to see how you can easily create a bespoke Artisan finish in your home.

You can find a full list of our paint stockists on our website. If you don't find the colour you want on shelf, simply order it through the stockist or directly from us.

[www.craigandrose.com](http://www.craigandrose.com)

For more inspiration and design tips join us on our social media channels.



**CRAIG & ROSE**<sup>®</sup>  
— SINCE 1829 —

Colours and effects shown are as close as possible to actual paint colours and design finishes can vary depending on the application. Due to limitations of the printing process, photographic and printed images and swatches may not represent true colour. Colours and images displayed are a guide only. Always confirm your choice of finish by testing Craig & Rose Artisan product.

Craig & Rose is a registered trade mark and Artisan and Metallic, Stone, Copper, Copper Patina, Concrete, Gold, Pearl, Stainless Steel are trade marks of Craig & Rose Limited, Halbeath Industrial Estate, Dunfermline, KY11 7EG United Kingdom. Version 2.